

Benchmarks:
 Cross cut in north end of concrete valley gutter, Nickelton & Nickelton Ct., adjacent to SW cor. Lot 6, Block C, Silverton Addition
 Elevation = 1361.49 NGVD 29

Cross cut in concrete E of curb in front of catch basin, adjacent to SW cor. Lot 6, Block B, Silverton Addition
 Elevation = 1360.36 NGVD 29

"□" cut in SW cor of curb inlet top adjacent to NW cor Lot 6, Block B, Copper Gate North Addition
 Elevation = 1361.77 NGVD 29

Curve #2
 Curve Data Based on Centerline
 Rad. = 500' Delta = 14° 32' 01" Tangent = 63.76'
 Arc = 126.83' L.C. = 126.49' Del/Pt. = 3.43774 Min.

Station	Arc	FACE CHORD LENGTHS		Defl.	T. Defl.
		8' Lt.	8' Rt.		
4+22.67	—	—	—	0'00'00"	0'00'00"
4+25.00	2.33'	2.45'	2.21'	0'08'01"	0'08'01"
4+50.00	25.00'	26.25'	23.75'	1'25'56"	1'33'57"
4+75.00	25.00'	26.25'	23.75'	1'25'57"	2'59'54"
5+00.00	25.00'	26.25'	23.75'	1'25'56"	4'25'50"
5+25.00	25.00'	26.25'	23.75'	1'25'57"	5'51'47"
5+49.50	24.50'	25.72'	23.27'	1'24'14"	7'16'01"

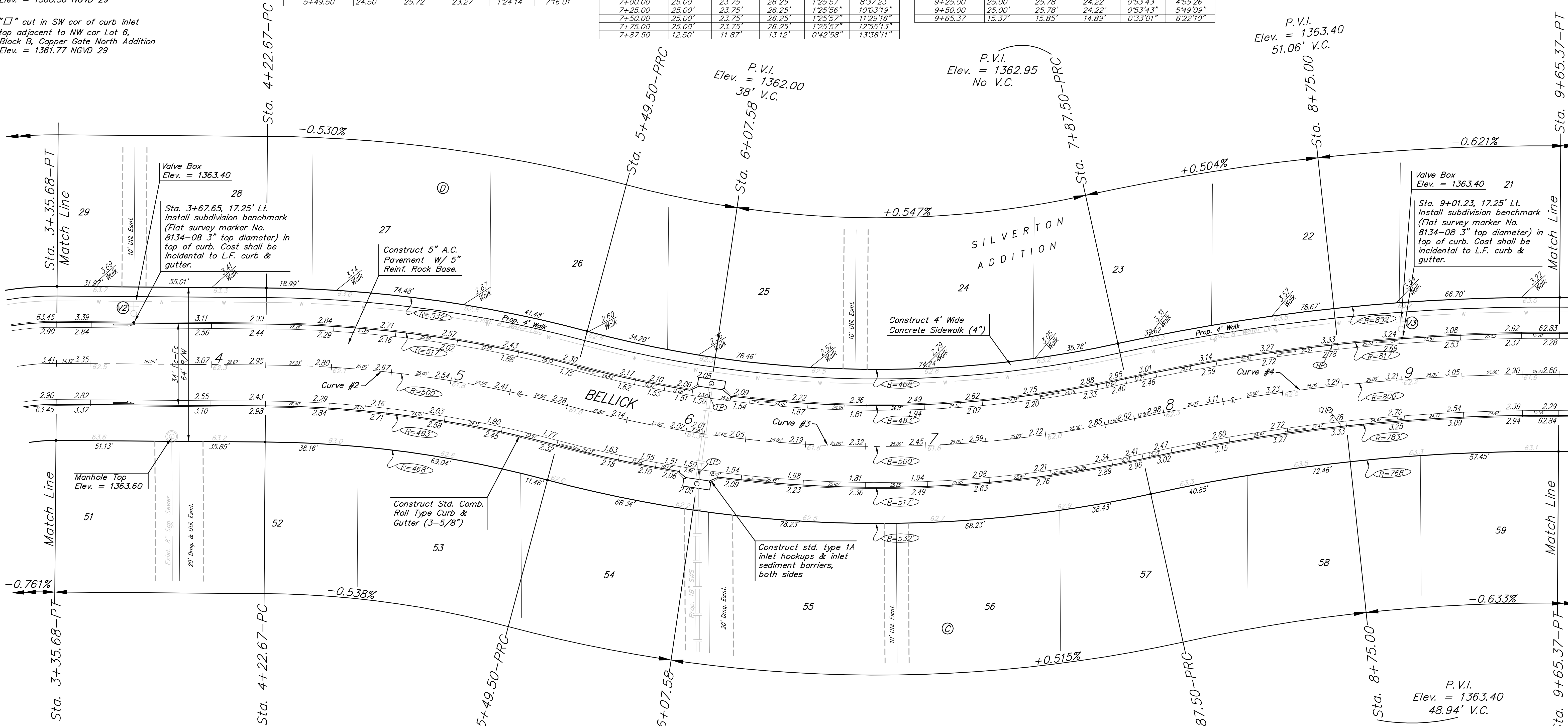
Curve #3
 Curve Data Based on Centerline
 Rad. = 500' Delta = 27° 16' 22" Tangent = 121.30'
 Arc = 238.00' L.C. = 235.76' Del/Pt. = 3.43775 Min.

Station	Arc	FACE CHORD LENGTHS		Defl.	T. Defl.
		8' Lt.	8' Rt.		
5+49.50	—	—	—	0'00'00"	0'00'00"
5+75.00	25.50'	24.22'	26.77'	1'27'40"	1'27'40"
6+00.00	25.00'	23.75'	26.25'	1'25'56"	2'53'36"
6+25.00	25.00'	23.75'	26.25'	1'25'57"	4'19'33"
6+50.00	25.00'	23.75'	26.25'	1'25'57"	5'45'30"
6+75.00	25.00'	23.75'	26.25'	1'25'56"	7'11'26"
7+00.00	25.00'	23.75'	26.25'	1'25'57"	8'37'23"
7+25.00	25.00'	23.75'	26.25'	1'25'56"	10'03'19"
7+50.00	25.00'	23.75'	26.25'	1'25'57"	11'29'16"
7+75.00	25.00'	23.75'	26.25'	1'25'57"	12'55'13"
7+87.50	12.50'	11.87'	13.12'	0'42'58"	13'38'11"

Curve #4
 Curve Data Based on Centerline
 Rad. = 800' Delta = 12° 44' 20" Tangent = 89.30'
 Arc = 177.87' L.C. = 177.50' Del/Pt. = 2.14857 Min.

Station	Arc	FACE CHORD LENGTHS		Defl.	T. Defl.
		8' Lt.	8' Rt.		
7+87.50	—	—	—	0'00'00"	0'00'00"
8+00.00	12.50'	12.89'	12.11'	0'26'51"	0'26'51"
8+25.00	25.00'	25.78'	24.22'	0'53'43"	1'20'34"
8+50.00	25.00'	25.78'	24.22'	0'53'43"	2'14'17"
8+75.00	25.00'	25.78'	24.22'	0'53'43"	3'08'00"
9+00.00	25.00'	25.78'	24.22'	0'53'43"	4'01'43"
9+25.00	25.00'	25.78'	24.22'	0'53'43"	4'55'26"
9+50.00	25.00'	25.78'	24.22'	0'53'43"	5'49'09"
9+65.37	15.37'	15.85'	14.89'	0'33'01"	6'22'10"

Scale: 1" = 20'
 • = Iron



P.V.I.
 Elev. = 1363.45
 No V.C.

P.V.I.
 Elev. = 1362.00
 36.02' V.C.

P.V.I.
 Elev. = 1363.40
 51.06' V.C.

P.V.I.
 Elev. = 1363.40
 48.94' V.C.

NOTE: ROLL TYPE CURB & GUTTER TO BE CONSTRUCTED ON THE PAVEMENT SHOWN ON THIS SHEET. TOP OF CURB ELEVATIONS ARE GIVEN FOR FULL HEIGHT CURB.

	Silverton Addition - Phase III	
	BELLIICK STA. 3+35.68 TO STA. 9+65.37	
<small>Baughman Company, P.A. 315 Ellis St. Wichita, KS 67211 P 316-362-7771 F 316-362-0149 ENGINEERING SURVEYING PLANNING LANDSCAPE ARCHITECTURE</small>		
PROJECT NUMBER 47284461	DESIGN JAK	DRAWN TMS
REVISIONS:	APPROVED DATE 7/14/08	SCALE Noted SHEET 7 OF 42
<small>Silverton\Phase3\Sr2</small>		<small>07-10-E958</small>