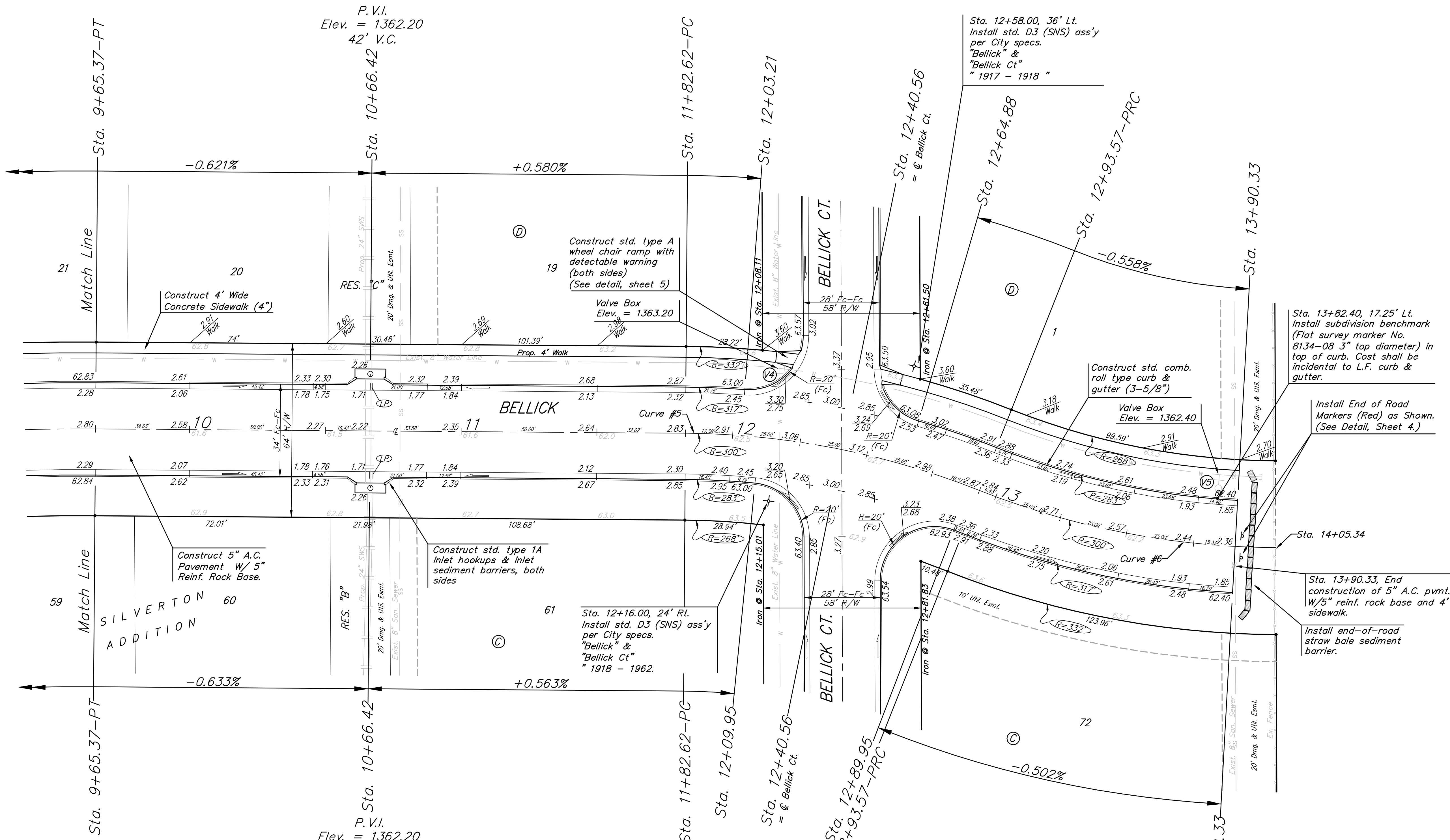
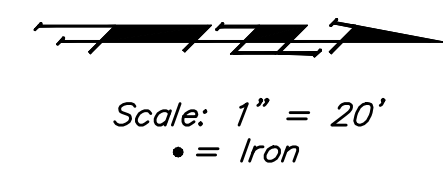


Benchmarks:
 Cross cut in north end of concrete valley gutter, Nickelton & Nickelton Ct., adjacent to SW cor. Lot 6, Block C, Silverton Addition
 Elev. = 1361.49 NGVD 29

Cross cut in concrete [of curb in front of catch basin, adjacent to SW cor. Lot 6, Block B, Silverton Addition
 Elev. = 1360.36 NGVD 29

"□" cut in SW cor of curb inlet top adjacent to NW cor Lot 6, Block B, Copper Gate North Addition
 Elev. = 1361.77 NGVD 29



Curve #5
 Curve Data Based on Centerline
 Rad. = 300' Delta = 21° 11' 22" Tangent = 56.11'
 Arc = 110.95' L.C. = 110.32' Def/Ft. = 5.72946 Min.

Station	Arc	FACE CHORD LENGTHS		Defl.	T. Defl.
		8' Lt.	8' Rt.		
11+82.62	-	-	-	0'00"00"	0'00"00"
12+00.00	17.38'	18.83'	15.93'	1'39'35"	1'39'35"
12+03.21	3.21'	3.48'	2.94'	0'18'23"	1'57'58"
12+09.95	6.74'	7.30'	6.18'	0'38'37"	2'36'35"
12+40.56	30.61'	33.15'	28.05'	2'55'23"	5'31'58"
12+64.88	24.32'	26.34'	22.29'	2'19'20"	7'51'18"
12+75.00	10.12'	10.96'	9.28'	0'57'59"	8'49'17"
12+89.95	14.95'	16.19'	13.70'	1'25'40"	10'14'57"
12+93.57	3.62'	3.92'	3.32'	0'20'44"	10'35'41"

Curve #6
 Curve Data Based on Centerline
 Rad. = 300' Delta = 21° 20' 51" Tangent = 56.54'
 Arc = 111.77' L.C. = 111.13' Def/Ft. = 5.72985 Min.

Station	Arc	FACE CHORD LENGTHS		Defl.	T. Defl.
		8' Lt.	8' Rt.		
12+93.57	-	-	-	0'00"00"	0'00"00"
13+00.00	6.43'	5.89'	6.97'	0'36'51"	0'36'51"
13+25.00	25.00'	22.91'	27.08'	2'23'15"	3'00'05"
13+50.00	25.00'	22.91'	27.08'	2'23'15"	5'23'20"
13+75.00	25.00'	22.91'	27.08'	2'23'15"	7'46'35"
14+00.00	25.00'	22.91'	27.08'	2'23'15"	10'09'50"
14+05.34	5.34'	4.90'	5.79'	0'30'36"	10'40'26"

NOTE: ROLL TYPE CURB & GUTTER TO BE CONSTRUCTED ON THE PAVEMENT SHOWN ON THIS SHEET. TOP OF CURB ELEVATIONS ARE GIVEN FOR FULL HEIGHT CURB.

Baughman BELLUCK
 STA. 9+65.37 TO STA. 13+90.33

Silverton Addition - Phase III

Engineering | Surveying | Planning | Landscape Architecture

PROJECT NUMBER: 47284461
 DESIGN: JAK
 DRAWN: TMS
 APPROVED: [Signature]
 DATE: 7/14/08

SCALE: Noted
 SHEET: 8 OF 42

8 OF 42