

Benchmarks:
 Cross cut in north end of concrete valley gutter, Nickelton & Nickelton Ct., adjacent to SW cor. Lot 6, Block C, Silverton Addition
 Elev. = 1361.49 NGVD 29

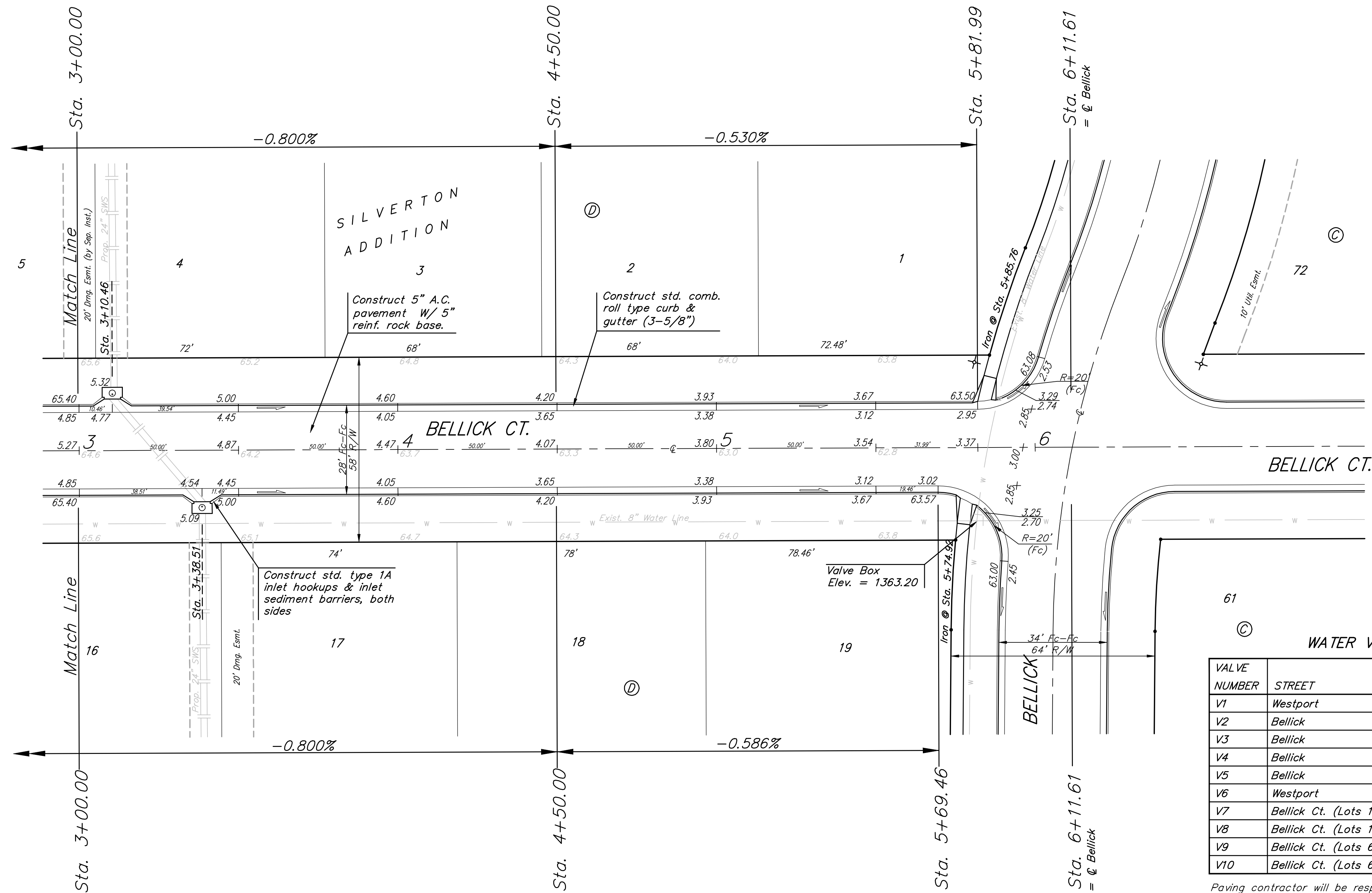
Cross cut in concrete [of curb in front of catch basin, adjacent to SW cor. Lot 6, Block B, Silverton Addition
 Elev. = 1360.36 NGVD 29

"□" cut in SW cor of curb inlet top adjacent to NW cor Lot 6, Block B, Copper Gate North Addition
 Elev. = 1361.77 NGVD 29

P.V.I.
 Elev. = 1364.20
 No V.C.

P.V.I.
 Elev. = 1364.20
 No V.C.

Scale: 1" = 20'
 • = Iron



WATER VALVE LOCATION TABLE

VALVE NUMBER	STREET	BASELINE STATION	OFFSET DISTANCE	OFFSET DIRECTION
V1	Westport	2+64.53	26'	Lt.
V2	Bellick	3+67.65	26'	Lt.
V3	Bellick	9+01.23	26'	Lt.
V4	Bellick	12+14.19	26'	Lt.
V5	Bellick	13+82.40	26'	Lt.
V6	Westport	0+26.00	26'	Rt.
V7	Bellick Ct. (Lots 1-19, Block D)	0+07.29	39.73'	Lt.
V8	Bellick Ct. (Lots 1-19, Block D)	0+55.73	23'	Rt.
V9	Bellick Ct. (Lots 61-72, Block C)	1+75.87	23'	Rt.
V10	Bellick Ct. (Lots 61-72, Block C)	3+18.40	23.37'	Lt.

Paving contractor will be responsible to operate all water valves on the project, in the presence of the inspector, to ensure accessibility to the valves, and that all valves are left in the "ON" position when the project is completed.

Subdivision Bench Marks

Street & Station	Location Description	Elevation
Bellick 3+67.65, 17.25' Lt.	Adjacent to Fire Hydrant near common front lot corner of Lots 28 & 29, Block D.	
Bellick 9+01.23, 17.25' Lt.	Adjacent to Fire Hydrant near common front lot corner of Lots 21 & 22, Block D.	
Bellick 13+82.40, 17.25' Lt.	Adjacent to Fire Hydrant near northeast lot corner of Lot 1, Block D.	
Bellick Ct. (Lots 1-19, Block D) 0+55.73, 14.25' Rt.	Adjacent to Fire Hydrant near common front lot corner of Lots 12 & 13, Block D.	
Bellick Ct. (Lots 61-72, Block C) 1+75.87, 14.25' Rt.	Adjacent to Fire Hydrant near common front lot corner of Lots 62 & 63, Block C.	

NOTE: ROLL TYPE CURB & GUTTER TO BE CONSTRUCTED ON THE PAVEMENT SHOWN ON THIS SHEET. TOP OF CURB ELEVATIONS ARE GIVEN FOR FULL HEIGHT CURB.

Baughman Engineering, P.A. 315 Ellis St. Wichita, KS 67211 P 316-362-7771 F 316-362-0149
 ENGINEERING | SURVEYING | PLANNING | LANDSCAPE ARCHITECTURE

Silverton Addition - Phase III
BELLUCK CT.
 LOTS 1-19, BLOCK D

PROJECT NUMBER: 47284461
 DESIGN: JAK
 DRAWN: TMS
 APPROVED: [Signature]
 DATE: 7/14/08

SCALE: Noted
 SHEET: **11 OF 42**

Silverton\Phase3\Sr6 07-10-E958