

Benchmarks:
 Cross cut in north end of concrete valley gutter, Nickelton & Nickelton Ct., adjacent to SW cor. Lot 6, Block C, Silverton Addition
 Elev. = 1361.49 NGVD 29

Cross cut in concrete of curb in front of catch basin, adjacent to SW cor. Lot 6, Block B, Silverton Addition
 Elev. = 1360.36 NGVD 29

"□" cut in SW cor of curb inlet top adjacent to NW cor Lot 6, Block B, Copper Gate North Addition
 Elev. = 1361.77 NGVD 29

Static WS = 1356.8
 100-yr WS = 1358.9

RES. "B"

Existing pond

Sta. 0+00, Begin Line 2
 Begin Construction of 18" RCP w/ 18" Reinf. Concrete Headwall and 33 S.Y. Light Stone Rip-rap.

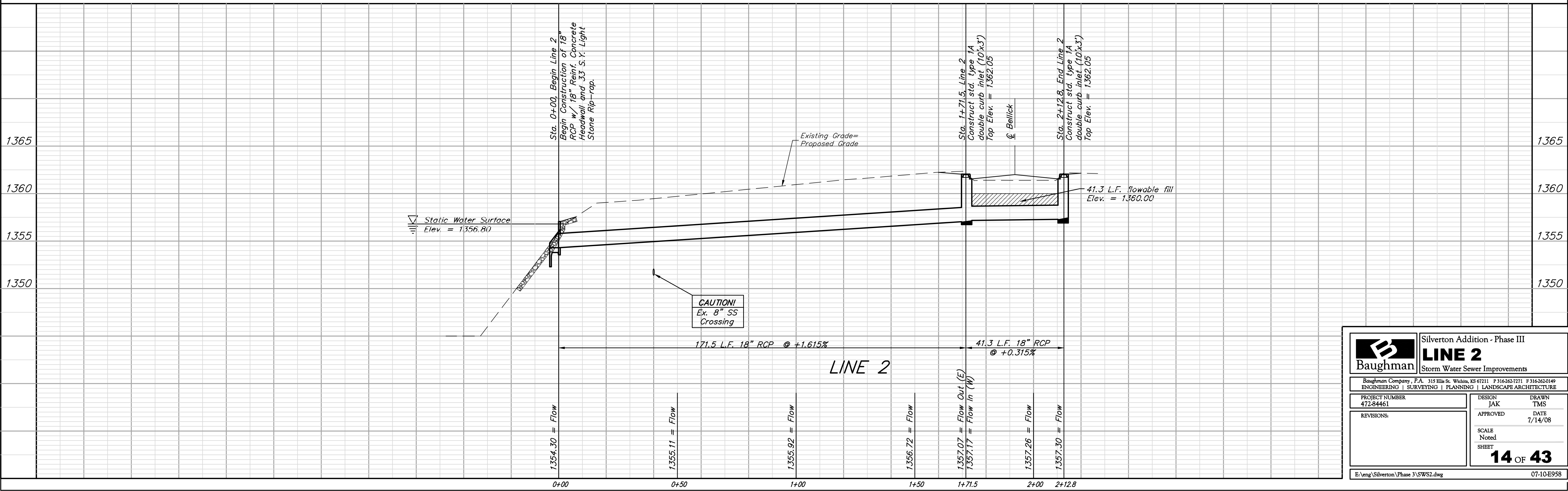
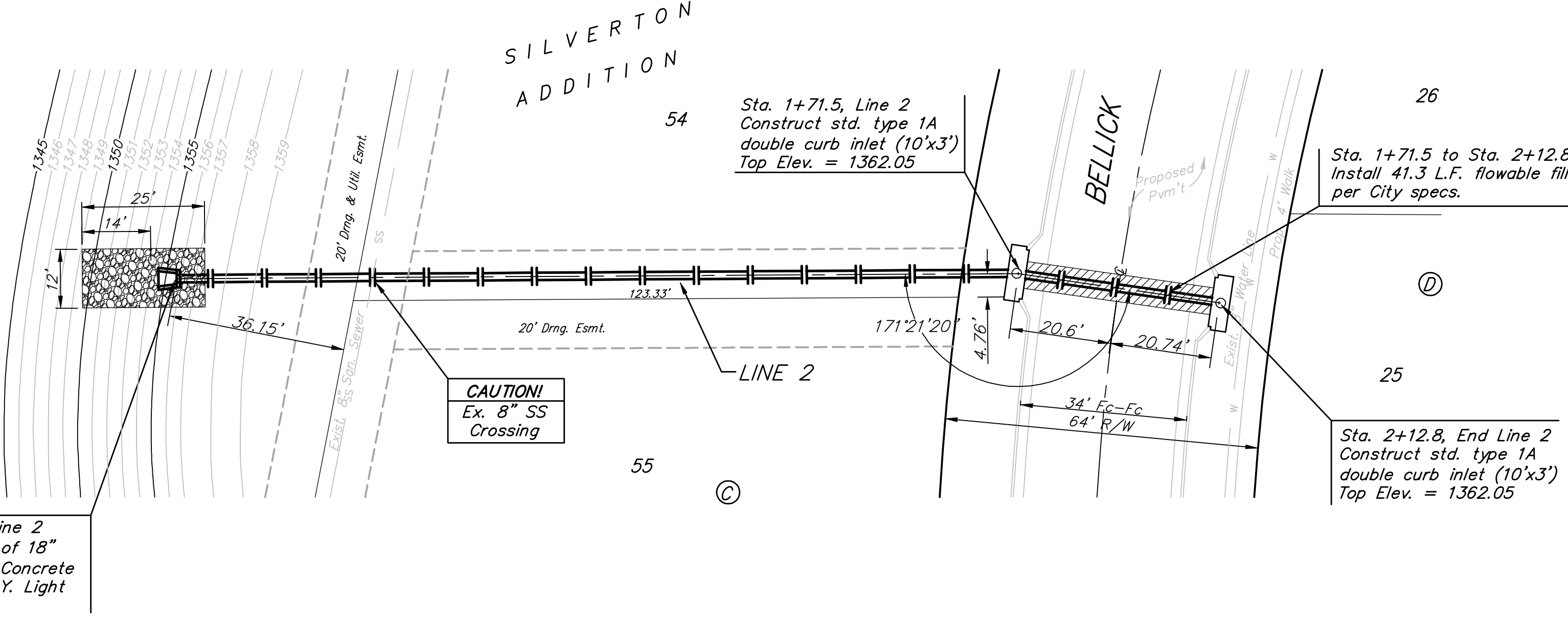
CAUTION!
 Ex. 8" SS Crossing

Sta. 1+71.5, Line 2
 Construct std. type 1A double curb inlet (10'x3')
 Top Elev. = 1362.05

Sta. 1+71.5 to Sta. 2+12.8
 Install 41.3 L.F. flowable fill per City specs.

Sta. 2+12.8, End Line 2
 Construct std. type 1A double curb inlet (10'x3')
 Top Elev. = 1362.05

Scale: 1" = 20' Horizontal
 1" = 5' Vertical
 • = Iron



		Silverton Addition - Phase III	
		LINE 2	
Storm Water Sewer Improvements		<small>Baughman Company, P.A. 315 Ellis St. Wichita, KS 67211 P 316-262-2771 F 316-262-0149 ENGINEERING SURVEYING PLANNING LANDSCAPE ARCHITECTURE</small>	
PROJECT NUMBER 472-84461	DESIGN JAK	DRAWN TMS	
REVISIONS:	APPROVED	DATE 7/14/08	
	SCALE Noted	SHEET	
		14 OF 43	
E:\eng\Silverton\Phase 3\SWS2.dwg		07-10-E958	