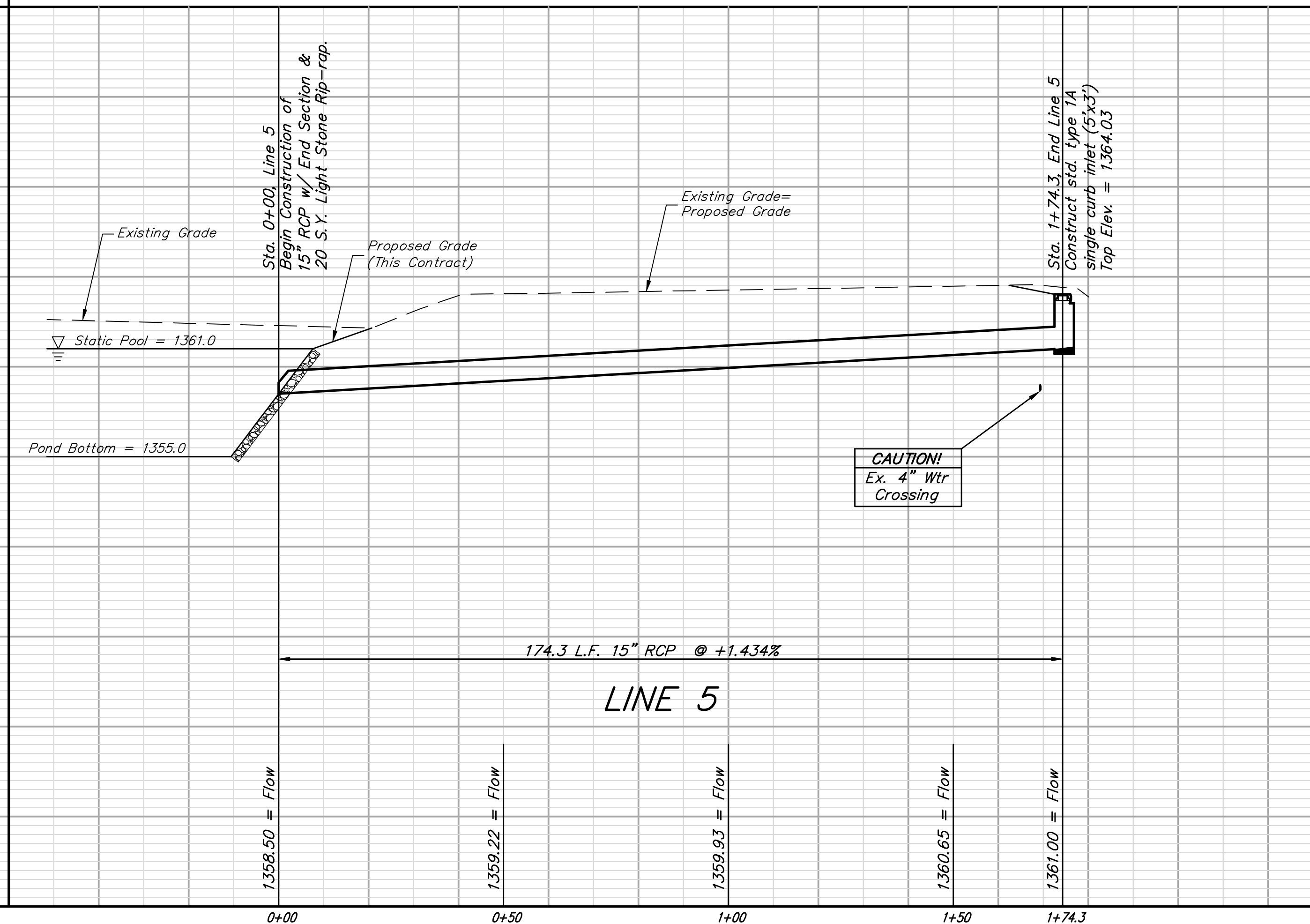
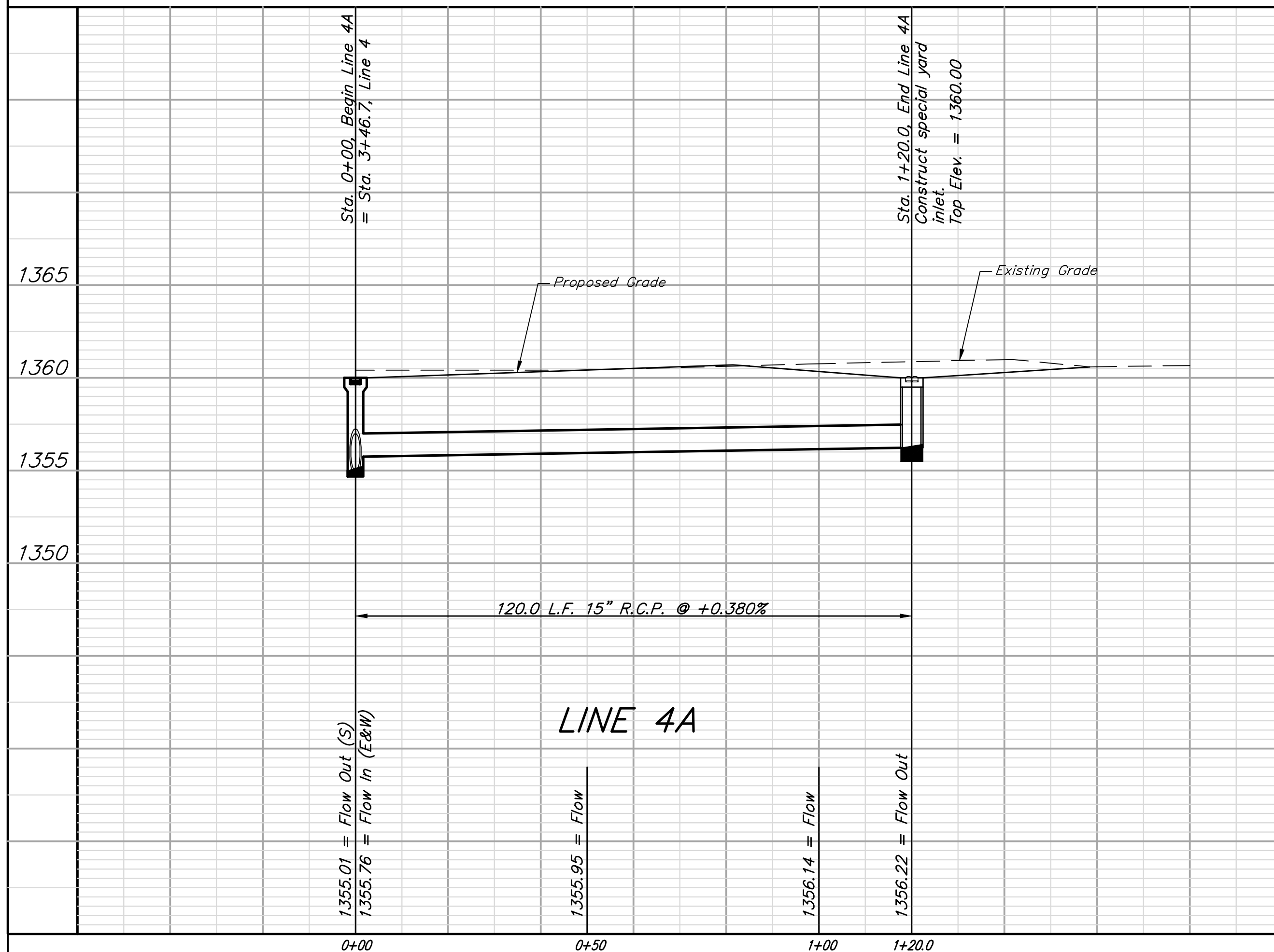
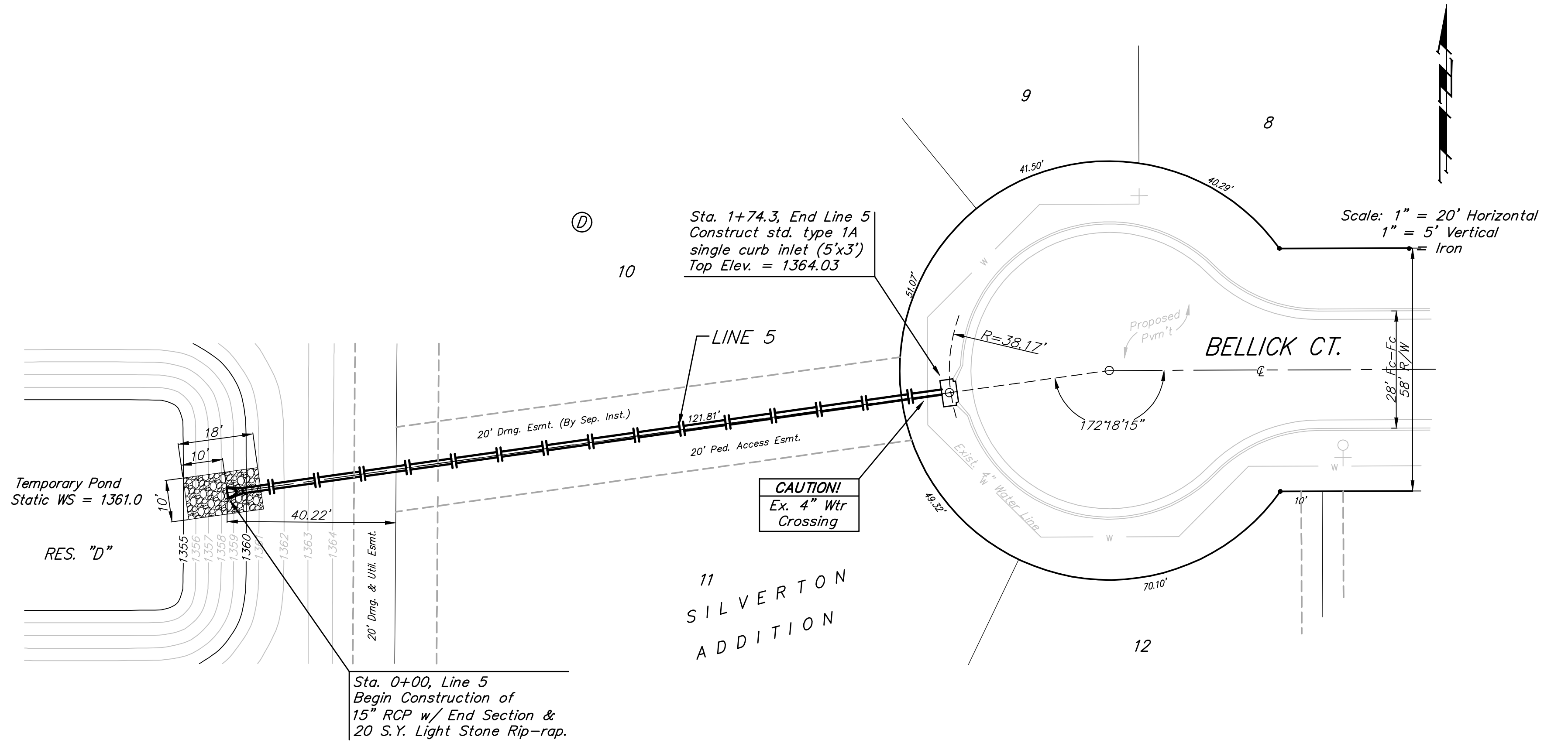
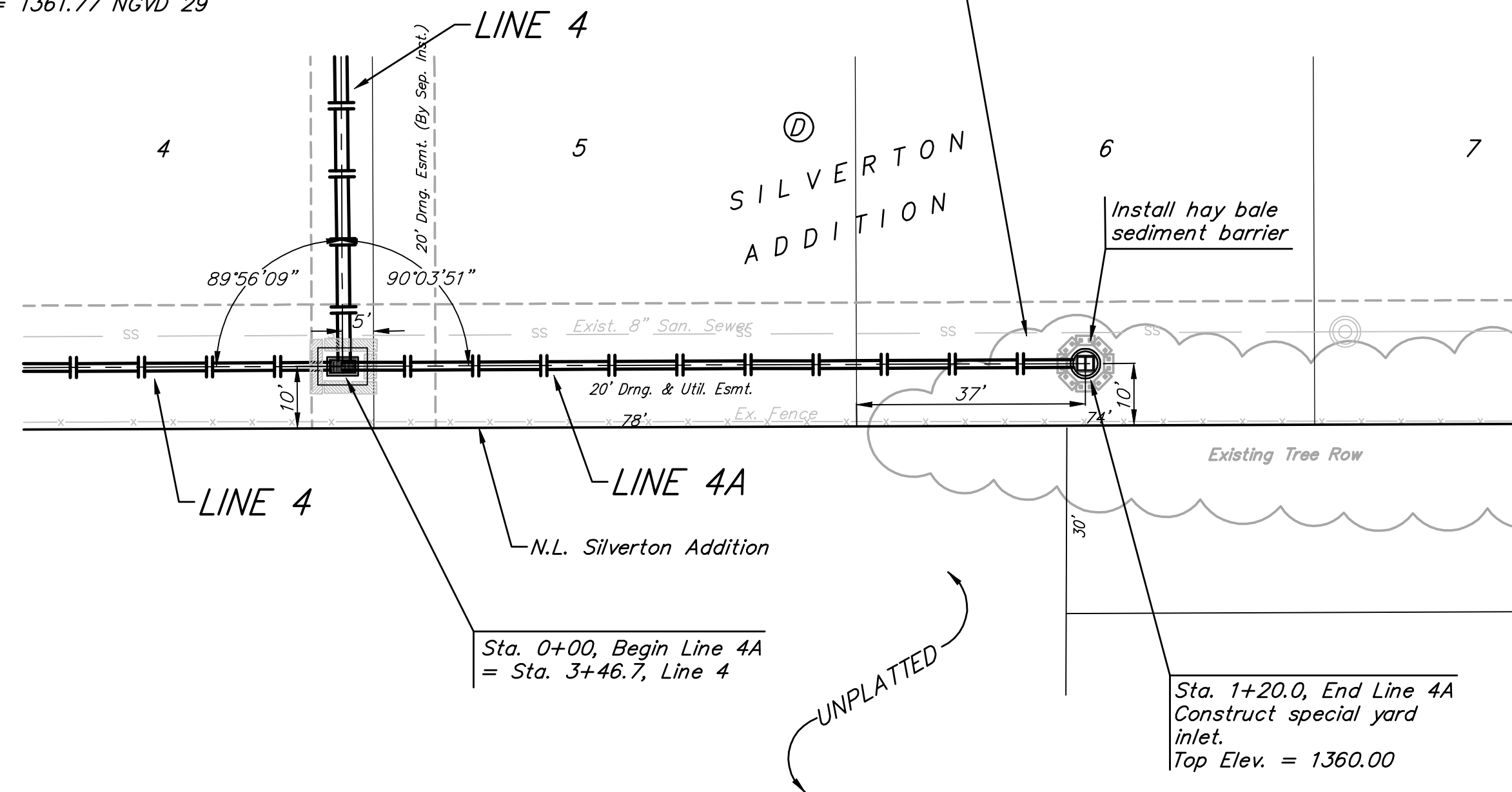


Benchmarks:
 Cross cut in north end of concrete valley gutter, Nickelton & Nickelton Ct., adjacent to SW cor. Lot 6, Block C, Silverton Addition
 Elev. = 1361.49 NGVD 29

Cross cut in concrete \bar{L} of curb in front of catch basin, adjacent to SW cor. Lot 6, Block B, Silverton Addition
 Elev. = 1360.36 NGVD 29

"□" cut in SW cor of curb inlet top adjacent to NW cor. Lot 6, Block B, Copper Gate North Addition
 Elev. = 1361.77 NGVD 29

Trim or Remove Trees Only as Necessary for Construction and with Approval of the Engineer. Cost to be Included in Bid Item "Site Clearing & Restoration"



Baughman		Silverton Addition - Phase III	
ENGINEERING SURVEYING PLANNING LANDSCAPE ARCHITECTURE		LINE 4A & LINE 5	
PROJECT NUMBER 472-84461		DESIGN JAK	
REVISIONS:		DRAWN TMS	
		APPROVED DATE 7/14/08	
		SCALE Noted	
		SHEET 17 OF 43	
E:\eng\Silverton\Phase 3\SWS5.dwg		07-10-E958	