

Bench Marks:

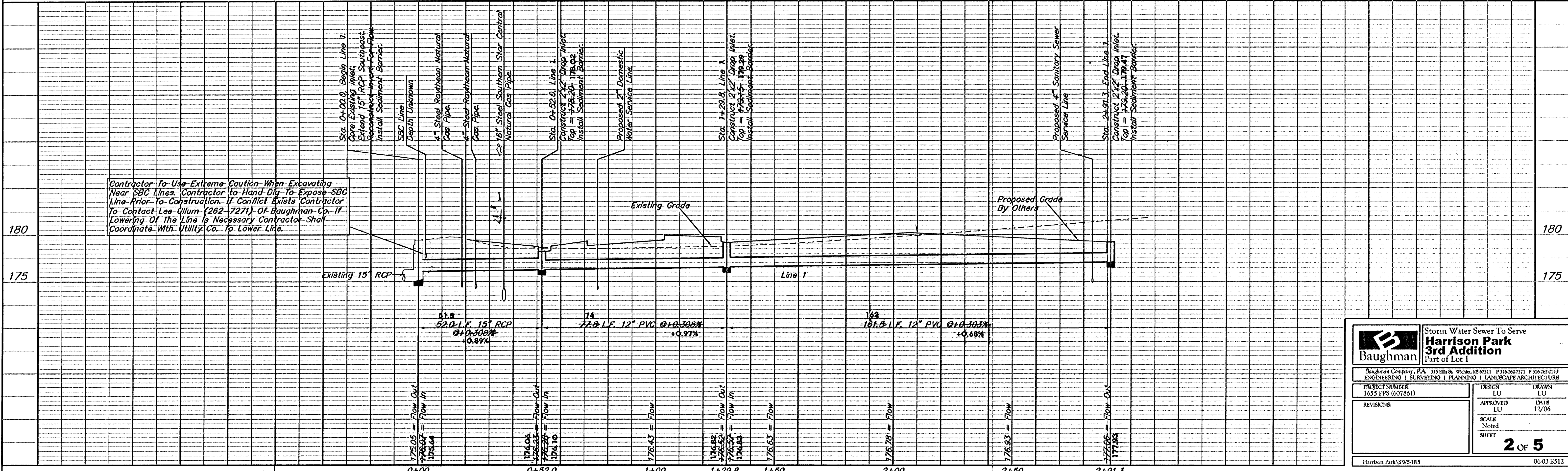
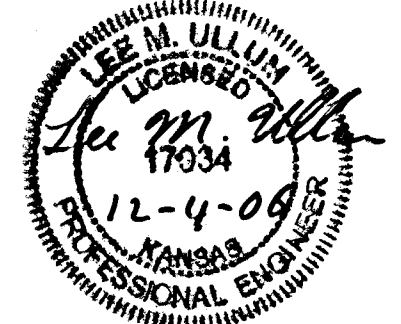
1. Webb Road and Lincoln City of Wichita Bench Mark. Southwest corner of intersection. Northwest corner of traffic signal light pole base. 37.00 Ft. South of center line 35.90 Ft. West of center line Elevation = 176.91 (City Datum)
2. Site Bench Mark "Cut on Center, Front of Catch Basin, East Side of Webb Road West of Property. Elevation = 179.40 (City Datum)

SITE BENCH MARK:
 "Cut on the Center Front of Catch Basin. Elev. = 179.40 (City Datum)

Remove Concrete Sidewalk As Necessary For Storm Water Sewer Construction. Do Not Replace. See Notes #8 & #9.

Contractor Shall Follow All Applicable Best Management Practices (BMP) For Erosion Control.

Contractor To Use Extreme Caution When Excavating Near Utility Lines. Contractor To Hand Dig To Expose All Utility Lines Prior To Construction. Verify Depth To Determine Conflict If Any.



		Storm Water Sewer To Serve Harrison Park 3rd Addition Part of Lot 1	
<small>Baughman Company, P.A. 315 Elm & W. 13th St. Wichita, KS 67201 P 316-262-7171 F 316-262-0149 ENGINEERING SURVEYING PLANNING LANDSCAPE ARCHITECTURE</small>			
PROJECT NUMBER 1655 PPS (607861)	DESIGN LU	DRAWN LU	DATE 12/06
REVISIONS	APPROVED LU	SCALE Noted	SHEET 2 OF 5
<small>Harrison Park/SWS/185</small>		<small>0603-ES12</small>	