

STORM SEWER PLANS

TO SERVE

WAL★MART SUPERCENTER #4321-00

WICHITA, SEDGWICK COUNTY, KANSAS

NW 53RD ST. NORTH & N. MERIDIAN

2007

CITY OF WICHITA PRIVATE PROJECT NO. 1757PPS (607861)

JAMES ARMOR, P.E., CITY ENGINEER

INDEX OF SHEETS

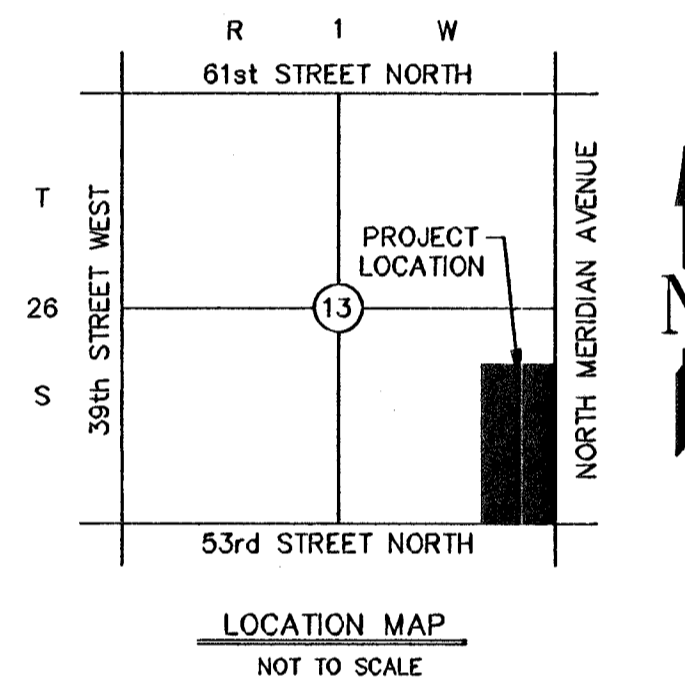
C-8.1	TITLE SHEET
PRIVATE STORM SEWER SYSTEM	
C-8.2A	PRIVATE STORM SEWER LINE LOCATION PLAN
C-8.2B	PRIVATE STORM SEWER LINE LOCATION PLAN
C-8.3	PRIVATE STORM SEWER LINE 'A' PLAN & PROFILE
C-8.4	PRIVATE STORM SEWER LINE 'A' (CONT.) & 'A2' PLAN & PROFILE
C-8.5	PRIVATE STORM SEWER LINE 'A1' PLAN & PROFILE
C-8.6	PRIVATE STORM SEWER LINE 'A3' & 'B' PLAN & PROFILE
C-8.7	PRIVATE STORM SEWER LINE 'D' PLAN & PROFILE
C-8.8	PRIVATE STORM SEWER LINE 'E' & 'F' PLAN & PROFILE
C-8.9	PRIVATE STORM SEWER LINE 'C' PLAN & PROFILE
C-8.10	PRIVATE STORM SEWER LINE 'C' (CONT.) PLAN & PROFILE
C-8.11	PRIVATE STORM SEWER LINE 'C' (CONT.) PLAN & PROFILE
C-8.12	PRIVATE STORM SEWER LINE 'D', 'D2' & 'G' PLAN & PROFILE
C-8.13	PRIVATE STORM SEWER LINE 'H', 'I' & 'I1' PLAN & PROFILE
C-8.14	MISCELLANEOUS STORM SEWER DETAILS
C-8.15	MISCELLANEOUS STORM SEWER DETAILS
C-8.16	STORM SEWER JUNCTION BOX DETAILS
C-8.17	REINFORCED CONCRETE MANHOLE
C-8.18	TYPE 22 CURB INLET
C-8.19	STAND PIPE WEIR FOR NORTH DETENTION POND
C-8.20	STAND PIPE WEIR FOR WEST DETENTION POND
PUBLIC STORM SEWER SYSTEM (NO. 1757PPS (607861))	
C-11.2	PUBLIC STORM SEWER LINE LOCATION PLAN
C-11.3	PUBLIC STORM SEWER LINE 'L' PLAN & PROFILE
C-11.4	PUBLIC STORM SEWER LINE 'L' (CONT.) & 'L-1' PLAN & PROFILE
C-11.5	PUBLIC STORM SEWER LINE 'L-1' (CONT.) PLAN & PROFILE
C-11.6	DOUBLE DROP & SINGLE DROP AREA INLET
C-11.7	REINFORCED CONCRETE MANHOLE
C-11.8	STANDARD & LIGHT WEIGHT MANHOLE FRAME & COVER
C-11.9	PUBLIC STORM SEWER MANHOLE COVER, TRENCHING & BEDDING DETAILS
C-11.10	MANHOLE ADJUSTMENT DETAILS
C-11.11	HEADWALL DETAILS FOR 18", 24" & 30" PIPE
C-11.12	STAND PIPE WEIR FOR SOUTH DETENTION POND

RESOURCE LIST

GAS COMPANY AQUILA GAS COMPANY 1611 SOUTH HOOVEER WICHITA, KANSAS 67209 PH: (316) 941-1608 CONTACT: CALVIN BRIGGS	ELECTRIC COMPANY WESTAR ENERGY 201 NORTH MARKET WICHITA, KS 67202 PH: (316) 261-5824 CONTACT: SHANE PRICE
KANSAS GAS SERVICE 1021 EAST 26TH STREET NORTH WICHITA, KANSAS 67219 PH: (316) 832-3101 CONTACT: CHARLENE LAWLESS	WATER & SEWER COMPANY CITY OF WICHITA, KS CITY HALL 455 NORTH MAIN WICHITA, KS 67202 PH: (316) 268-4553 FAX: (620) 421-7059 CONTACT: BILL PERKINS
KANSAS DEPT. OF TRANSPORTATION (KDOT) DISTRICT 5 (SOUTH CENTRAL DIVISION) ROBERT COOK - DISTRICT ENGINEER PH: (620) 663-3361	PLANNING / ZONING CITY OF WICHITA METROPOLITAN AREA PLANNING DEPARTMENT CITY HALL - 10TH FLOOR 455 NORTH MAIN WICHITA, KANSAS 67202 PH: (316) 268-4421 CONTACT: DONNA GOLTRY
CIVIL ENGINEERS SMC CONSULTING ENGINEERS, P.C. TERENCE L. HAYNES, P.E. 815 WEST MAIN ST. OKLAHOMA CITY, OK 73106 PH: (405) 232-7715 FAX: (405) 232-7859	TELEPHONE COMPANY SOUTHWESTERN BELL 154 NORTH BROADWAY, ROOM 210 WICHITA, KS 67202 PH: (316) 268-2245 CONTACT: BOB ALLEY

OWNERS' ADDRESS

WAL-MART STORES, INC.
702 S.W. 8TH STREET
BENTONVILLE, AR 72716
PH: (479) 273-4000



NOTE TO CONTRACTOR
CALL KANSAS ONE
1-800-522-6543
This number is to be used for information on the location of all underground utilities. Contact this number prior to any excavation.

APPROVED AS NOTED
By CITY ENGINEER OF WICHITA

Sanitary Sewers _____
Storm Sewers VRH 3/29/07
Driveway Approaches _____
Water Mains _____

NOTE TO CONTRACTOR

INSPECTION AND TESTING FOR THIS PROJECT IS TO BE PROVIDED BY A LICENSED CONSULTING ENGINEERING FIRM UNDER CONTRACT WITH THE OWNER/DEVELOPER. SAID INSPECTION TO BE IN ACCORDANCE WITH THE CITY OF WICHITA STANDARD CONSTRUCTION ENGINEERING PRACTICES AND CERTIFIED BY A LICENSED PROFESSIONAL ENGINEER. NO WORK SHALL BE PERFORMED IN DEDICATED EASEMENTS OR THE PUBLIC RIGHT-OF-WAY BY THE CONTRACTOR WITHOUT SUCH INSPECTION NOR SHALL ANY WORK BE COMMENCED IN DEDICATED EASEMENT OR ANY RIGHT-OF-WAY WITHOUT WRITTEN AGREEMENT BY THE CITY ENGINEER.

1. An effort has been made to locate and show approximate location of underground utilities. Buried utilities are not necessarily shown. It is the Contractors responsibility to locate and preserve all utility services.
2. Proposed utility services have been coordinated with the local utility companies. Contractor is responsible for contacting all utility companies prior to construction.
3. All quantity estimates shown in this set of plans are the Engineer's estimate and are provided for general information only. The Contractor is solely responsible for calculating his own quantities.
4. All construction shall be done in accordance with Wal-Mart Sitework Specifications, and where applicable, as per the City of Wichita's Standard Specifications for Public Improvements and Kansas Department of Transportation's Standard Specifications for Highway Construction, latest edition.

I, Terence L. Haynes, Kansas Professional Engineer #14583, do hereby state that these storm sewer plans, prepared by me or under my direct, responsible supervision, are in strict conformance with the applicable Codes of the City of Wichita and the sound principles and practice of the Civil Engineering profession

Terence L. Haynes
TERENCE L. HAYNES, P.E. #14583

REVIEWED BY: _____ DATE: _____
CITY ENGINEER As built

Contractor: Utility Contractors
Inspector: LAKEY SAUND
Company: K.E. Miller
Date: 10/30/07

BENCH MARKS:

BM #1 R.R. SPIKE IN WEST SIDE OF P.P. AT N.E.N. CORNER OF INTER. 23rd AND MERIDIAN ELEV=1332.98	BM #2 R.R. SPIKE IN NORTH SIDE OF P.P. WEST OF MERIDIAN ON SOUTH SIDE OF 53rd STREET ELEV=1331.15	BM #3 R.R. SPIKE IN NORTH SIDE OF 4th P.P. WEST OF MERIDIAN ON SOUTH SIDE OF NW 53rd ELEV=1332.60
BM #4 R.R. SPIKE IN NORTH SIDE OF 6th P.P. WEST OF MERIDIAN ON SOUTH SIDE OF NW 53rd ELEV=1333.28	BM #5 CUT "X" ON T/C ON E. SIDE OF MERIDIAN W OF S PI IN SWLK & APPROX 50' S OF DR 2474 MERIDIAN ELEV=1332.91	BM #6 CUT "X" ON SOUTH END OF CONC. HOOD INLET ON EAST SIDE OF MERIDIAN AT 5055 MERIDIAN ELEV=1332.18

SMC Consulting Engineers, P.C.
Oklahoma City, Oklahoma

TITLE SHEET	
STORM SEWER PLANS TO SERVE	
WAL-MART SUPERCENTER #4321-00	
N.W. 53rd ST. NORTH & N. MERIDIAN WICHITA, KANSAS	
SMC Consulting Engineers, P.C. 815 West Main - Oklahoma City, OK 73106 PH: 405-232-7715 Fax: 405-232-7859 KANSAS CERTIFICATE OF AUTHORIZATION NO. E-335 EXP. DEC. 31, 2008	
SMC	
DATE: 03/23/07	SCALE: NONE
DRAWN BY: MDS	SHEET NO. C-8.1
PROJECT NO.: 4344.00	ENGINEER: TERENCE L. HAYNES, P.E. #14583

