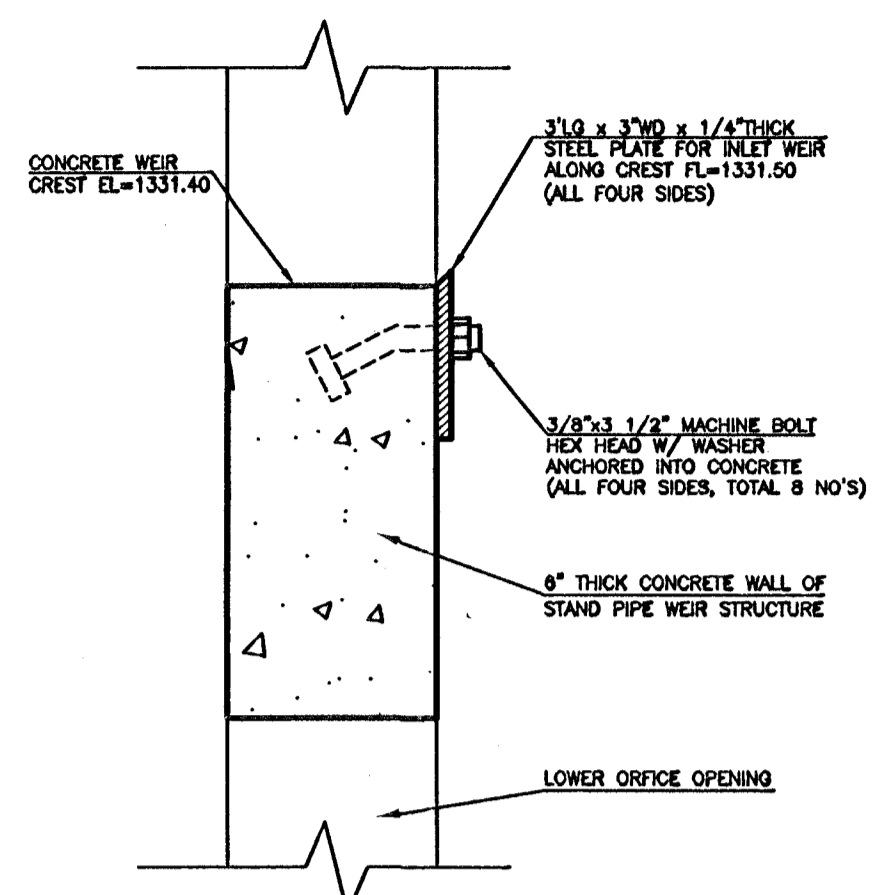


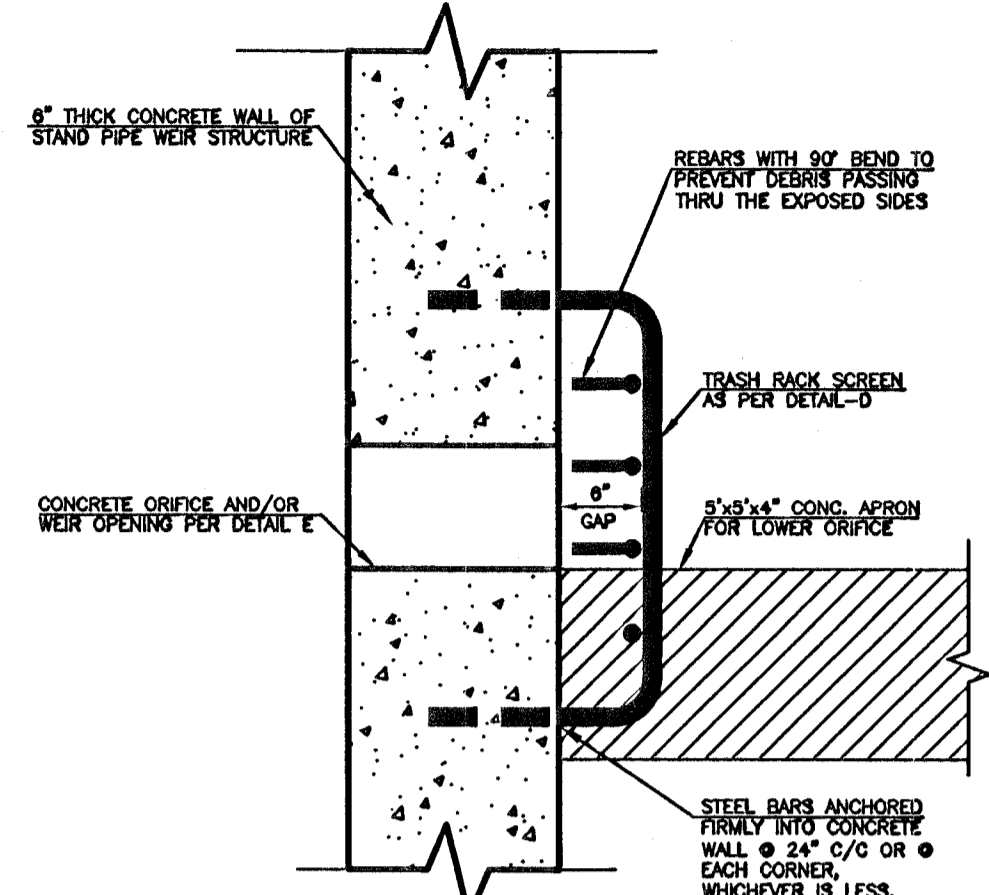
**DETAIL-A**  
N.T.S.

NOTE:  
1. REBARS AND TRASH RACKS ARE NOT SHOWN HERE FOR CLARITY.



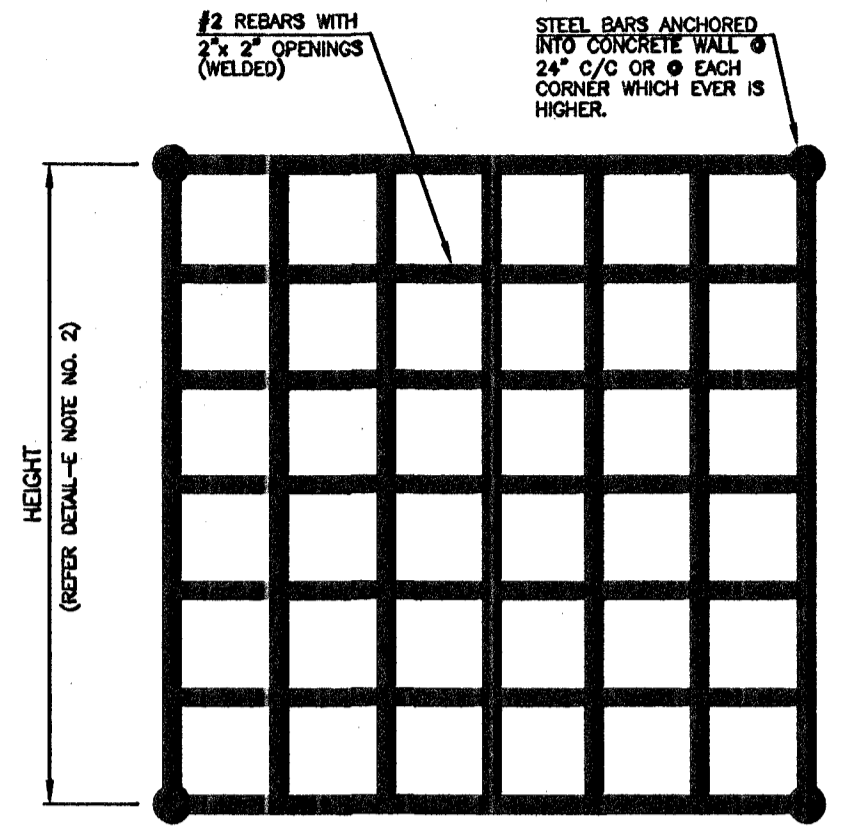
**DETAIL-B**  
N.T.S.

NOTE:  
1. REBARS AND TRASH RACKS ARE NOT SHOWN HERE FOR CLARITY.

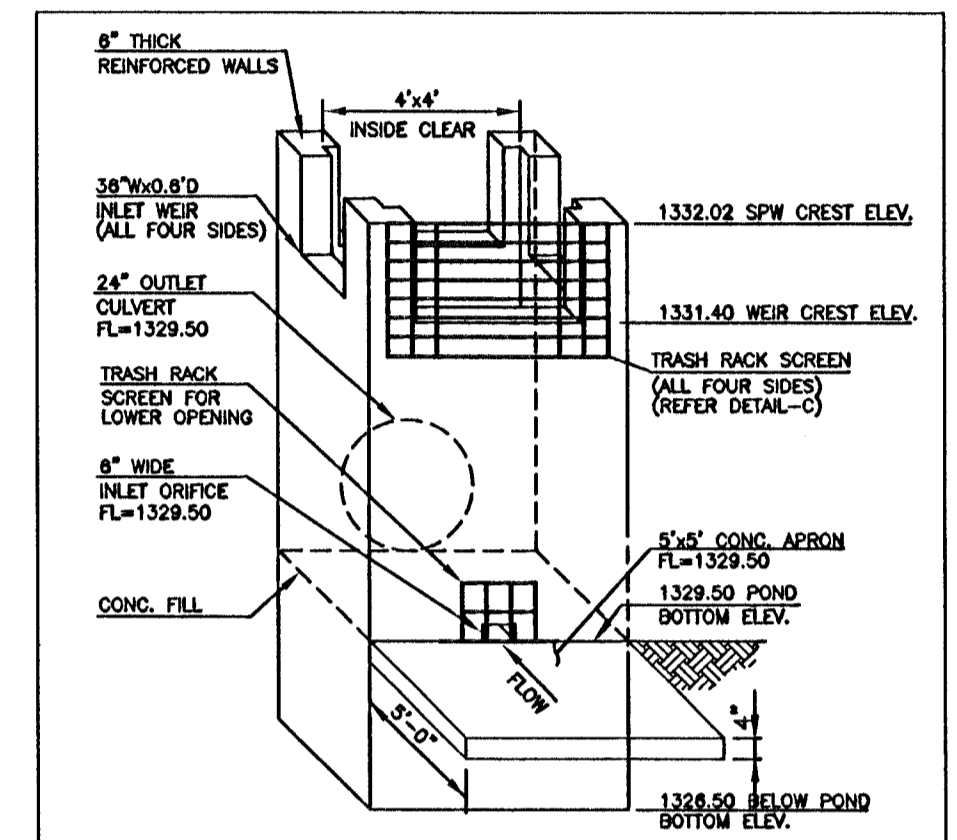


**DETAIL-C**  
N.T.S.

NOTE:  
1. REBARS ARE NOT SHOWN HERE FOR CLARITY.

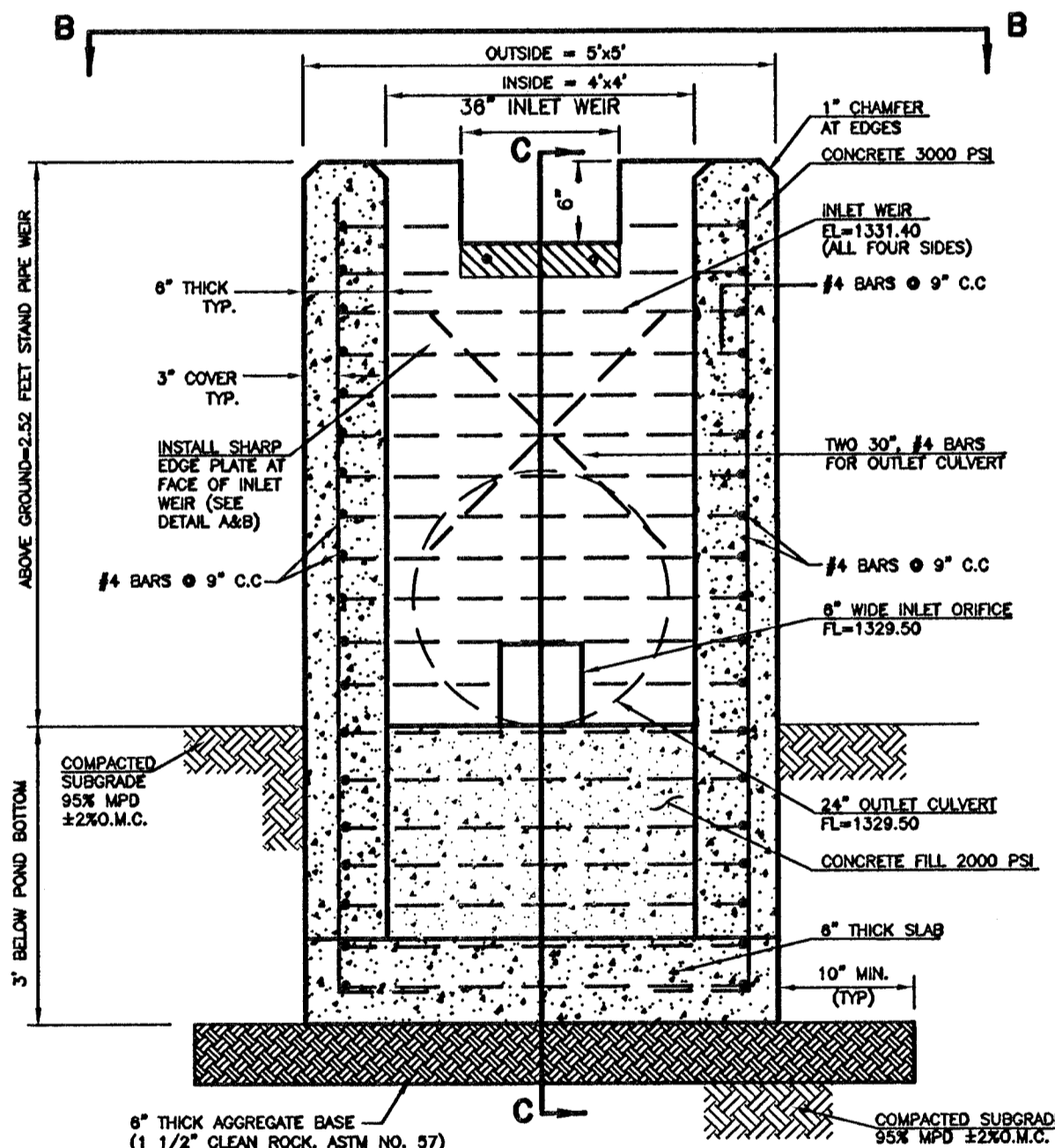


**DETAIL-D**  
N.T.S.  
**TRASH RACK SCREEN**  
N.T.S.

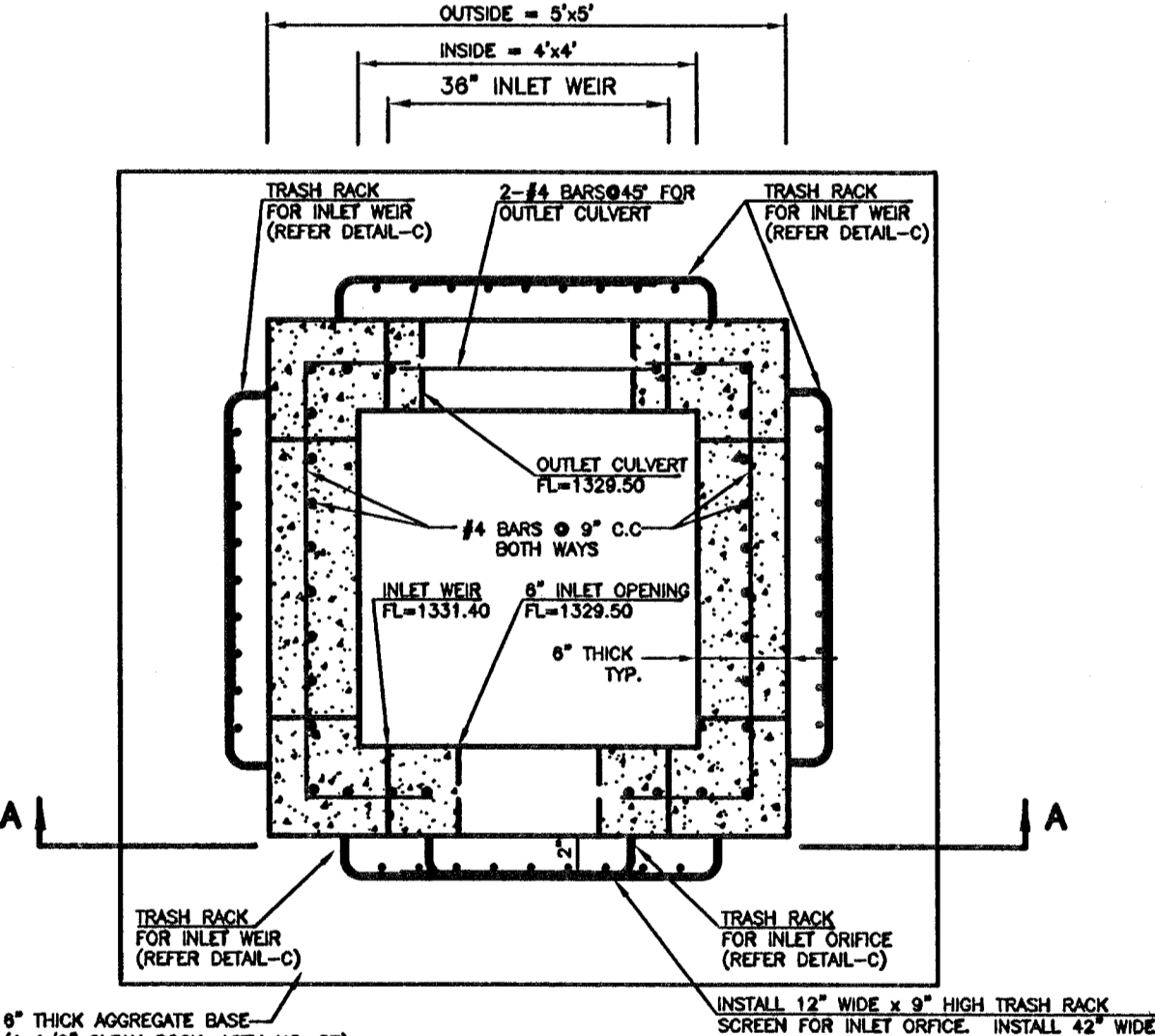


**DETAIL-E**  
**CONCRETE STAND PIPE WEIR (SPW)**  
**FOR WEST DETENTION POND**  
N.T.S.

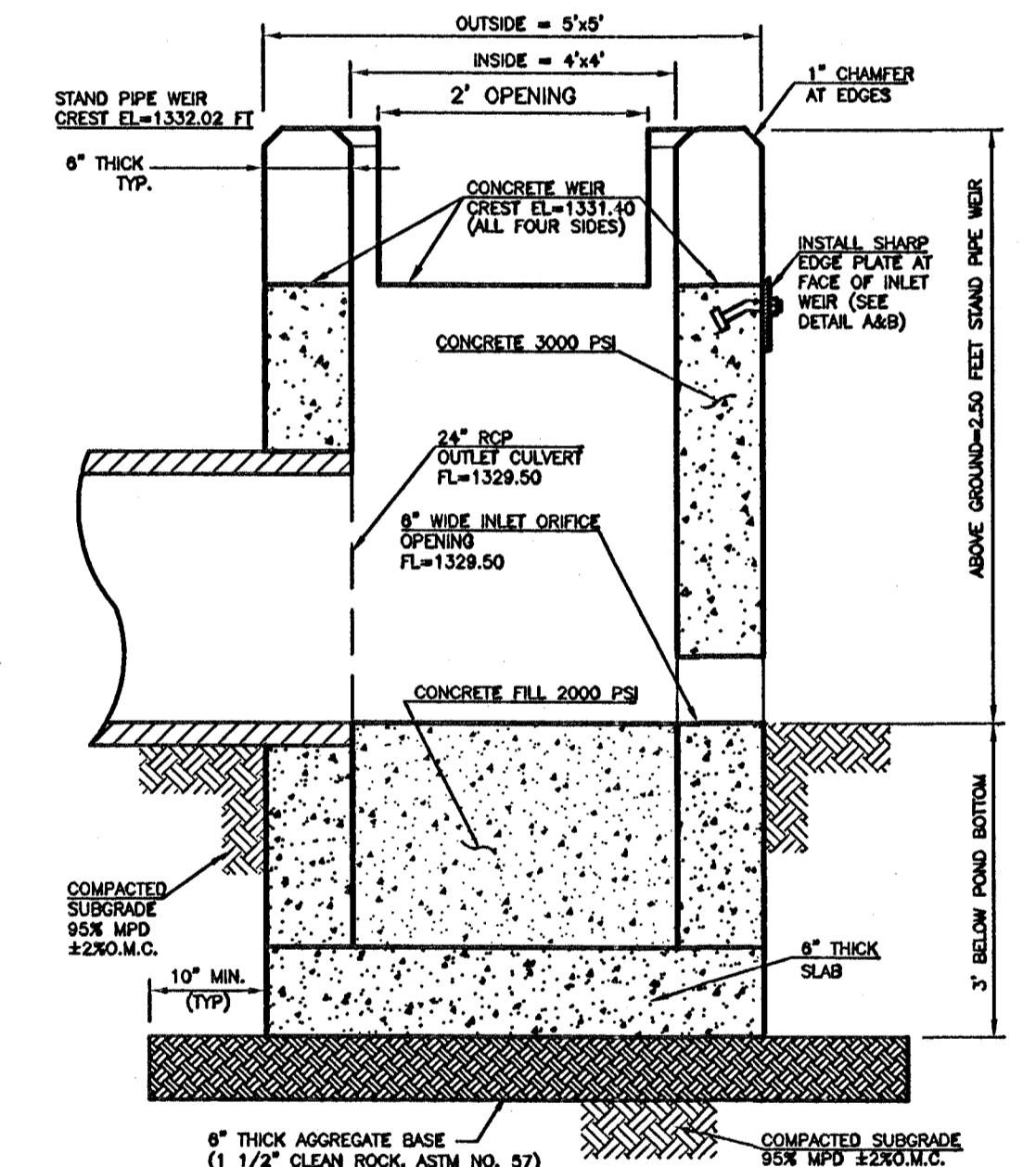
NOTE:  
1. REBARS AND CONCRETE THICKNESS OF THE SPW IS NOT SHOWN HERE FOR CLARITY.  
2. INSTALL 12" WIDE x 9" HIGH TRASH RACK SCREEN FOR INLET ORIFICE. INSTALL 42" WIDE x 12" HIGH TRASH RACK SCREEN FOR INLET WEIR ON FOUR SIDES. TRASH RACK SCREEN TO BE #2 REBARS WITH 2"x2" OPENINGS (WELDED). ANCHOR TRASH RACK INTO STAND PIPE WEIR FACE WALL WITH ANCHORED BARS INTO CONCRETE WALL (REFER DETAIL-C).



**SECTION A-A**  
N.T.S.



**SECTION B-B**  
N.T.S.



**SECTION C-C**  
N.T.S.

NOTE:  
1. REBARS AND TRASH RACKS ARE NOT SHOWN HERE FOR CLARITY.

- NOTE:
1. REINFORCED STEEL SHALL BE DEFORMED BARS. COST OF STEEL, CONCRETE & MISCELLANEOUS FITTINGS SHALL BE INCLUDED IN PRICE BID FOR STAND PIPE WEIR STRUCTURE.
  2. SOME OF THE REBARS IN SECTION A-A OR B-B VIEW MAY NOT BE SHOWN FOR CLARITY PURPOSES. HOWEVER, CONTRACTOR SHALL READ SECTION A-A AND B-B TOGETHER TO CALCULATE THE REBARS QUANTITIES.
  3. ALL CONSTRUCTION AND MATERIALS SHALL BE IN ACCORDANCE WITH THE CURRENT APPLICABLE STANDARDS OR SUPPLEMENTAL SPECIFICATIONS.
  4. CONCRETE STAND PIPE WEIR STRUCTURE SHALL BE PRE CAST.
  5. CONCRETE SHALL BE AIR ENTRAINED PER ODOT SPECS.

**CONCRETE STAND PIPE WEIR**  
**FOR WEST DETENTION POND**  
N.T.S.

**STAND PIPE WEIR FOR WEST DETENTION POND**

**WAL-MART SUPERCENTER #4321-00**

**NW 53rd ST. NORTH & N. MERIDIAN WICHITA, KANSAS**

**SMC Consulting Engineers, P.C.**  
815 West Main - Oklahoma City, OK 73108  
PH: 405-232-7715 FAX: 405-232-7859  
KANSAS CERTIFICATE OF AUTHORIZATION NO. E-335 EXP. DEC. 2008

No.	Revision	By	Date
1	Per City comments	MOS	03/21/07

DATE: 12/12/08 SCALE: NTS SHEET NO. C-8.20

DRAWN BY: TN

PROJECT NO.: 4344.00

ENGINEER: TERENCE L. HAYNES, P.E. #14583

