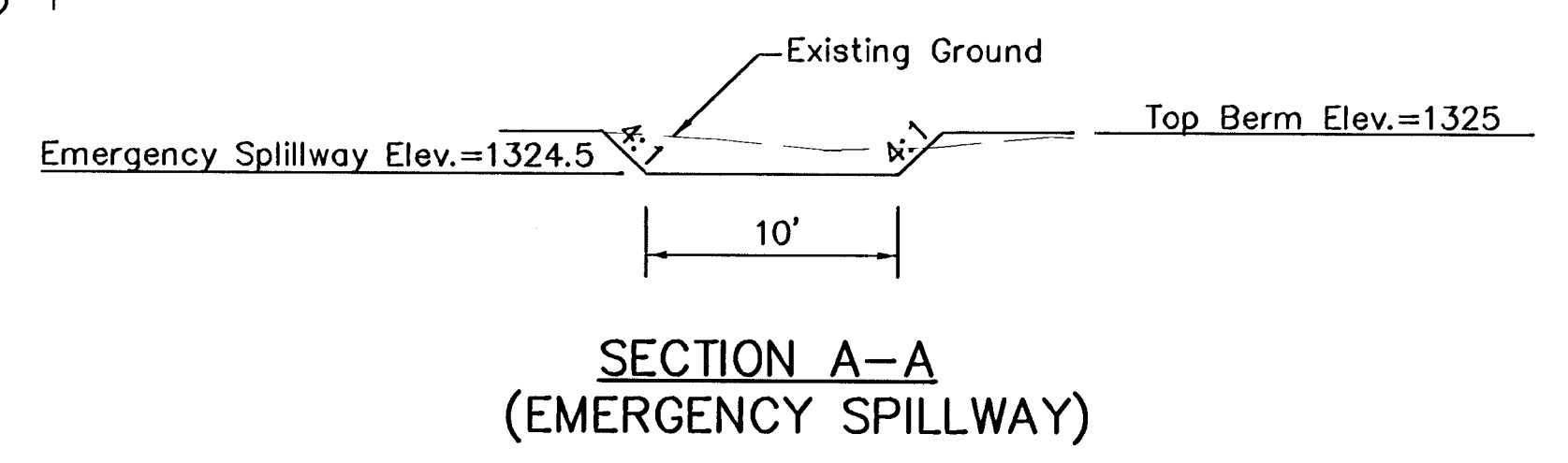
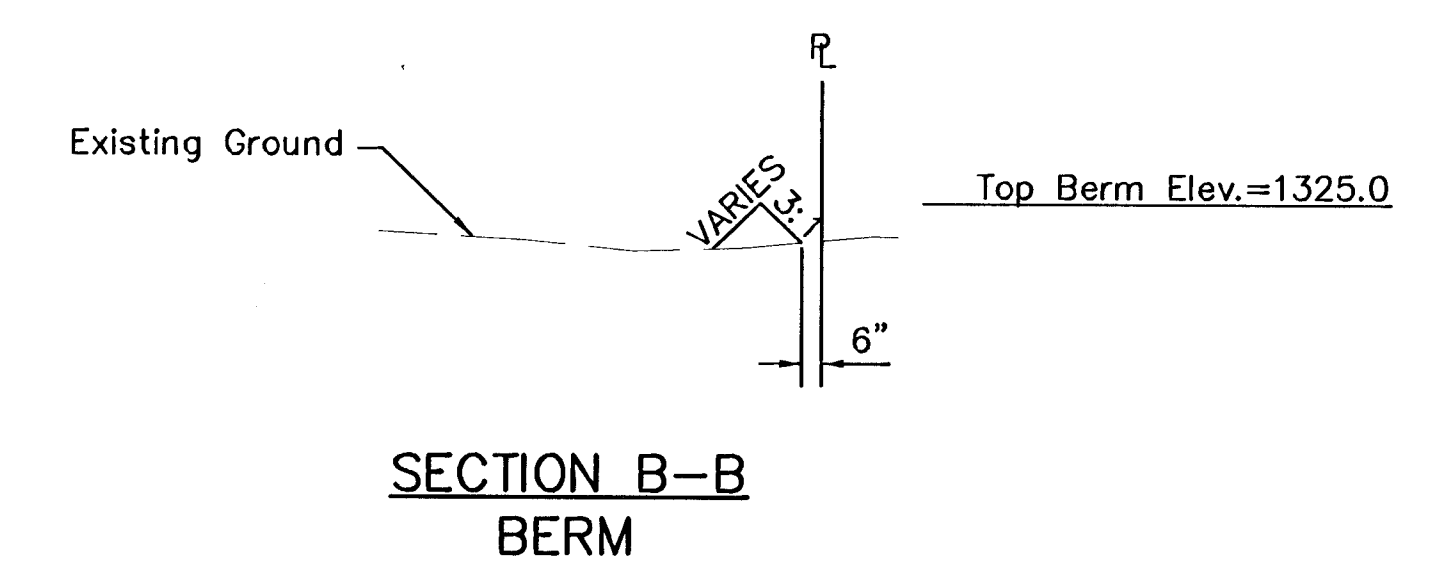
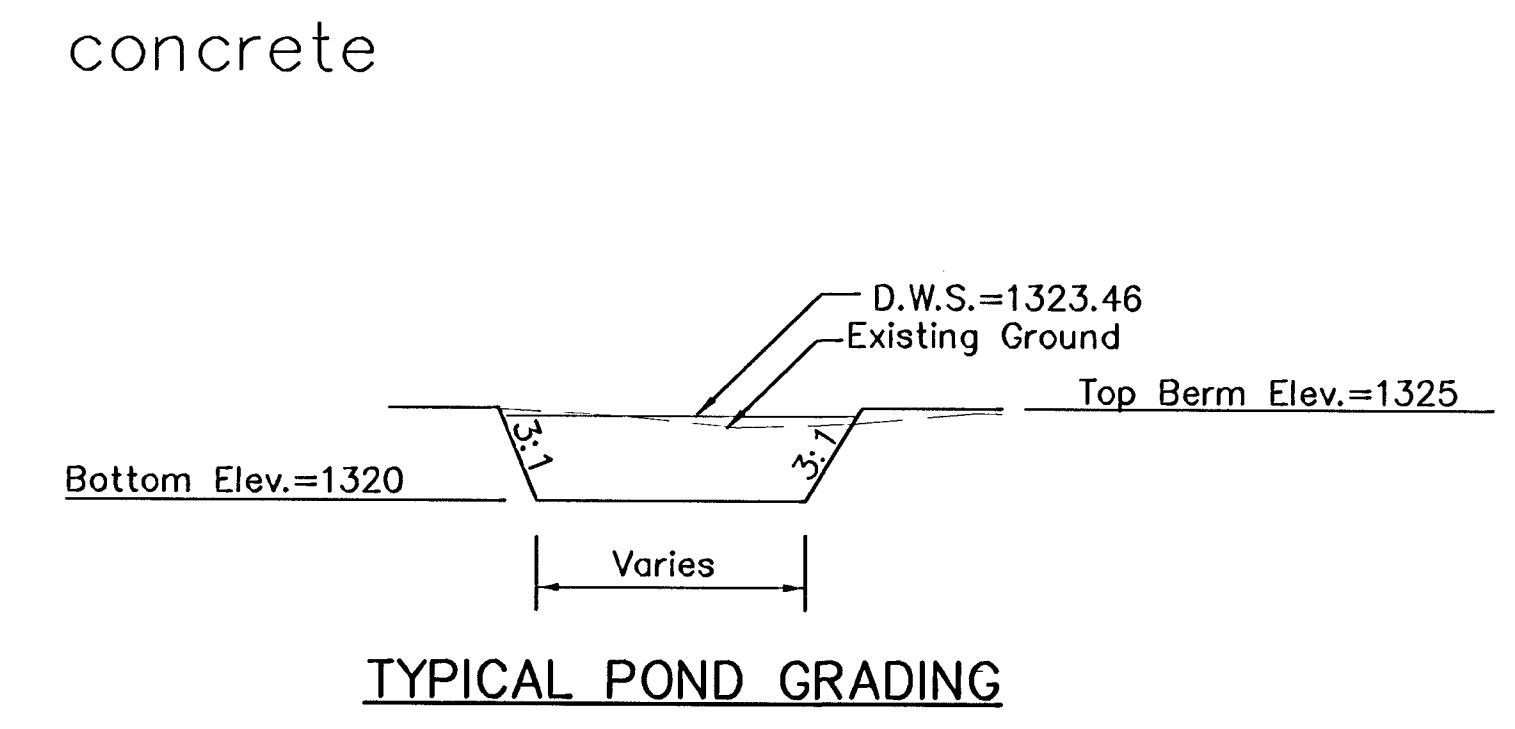
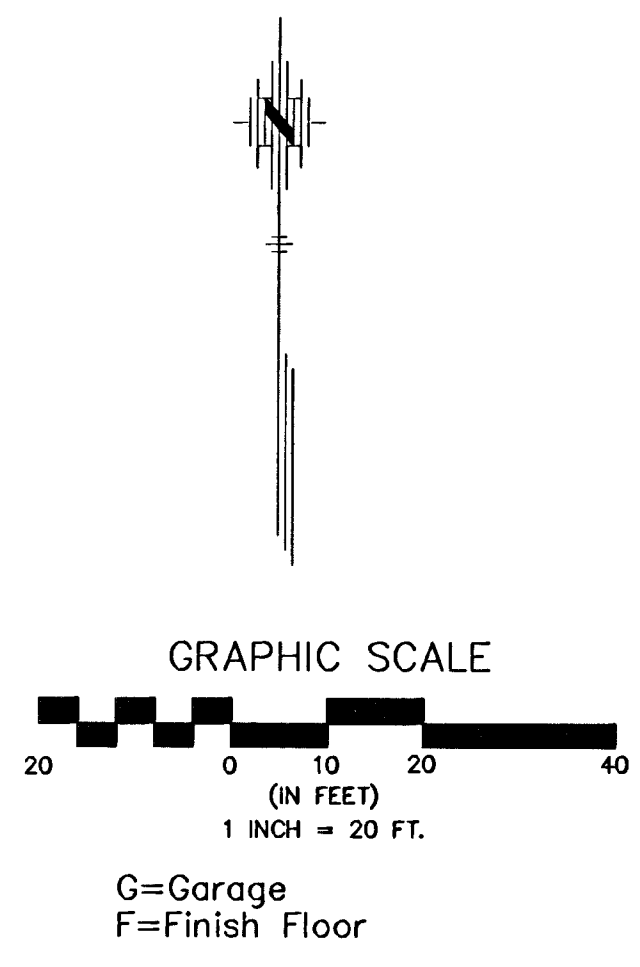


**COORDINATES POINTS LIST**

Number	Northing	Easting
700	9725.08	10762.54
701	9725.00	10683.54
702	9650.07	10683.43
703	9650.00	10858.43
704	9694.83	10858.45
705	9694.83	10762.54
706	9705.42	10759.29
707	9726.00	10734.67
708	9720.91	10705.55
709	9696.99	10685.88
710	9675.16	10686.17
711	9651.47	10710.17
712	9651.47	10837.00
713	9692.89	10833.16
714	9686.16	10851.73
715	9683.34	10853.06
716	9693.70	10769.15
717	9703.65	10759.30
720	9664.61	10853.55



<p><b>FINAL</b></p>	<p>Designed By: T. Austin/S. Schmidt          Drawn By: S. Schmidt          Pce Job No.: 1821/Oak Cliff/boase-sws.dwg          Date: 09/06/06</p>	<p>No. <input type="checkbox"/> <input type="checkbox"/> <input type="checkbox"/> <input type="checkbox"/></p> <p>Date _____</p> <p>By _____</p> <p>Approved _____</p> <p>Revision _____</p>
<p>OAK CLIFF ESTATES 6TH ADDITION          STORM SEWER IMPROVEMENTS          DRY DETENTION POND          CITY OF WICHITA, KANSAS          JAMES ARMOUR, P.E. - CITY ENGINEER          1697 PPS (607879)</p>		
<p>POE &amp; ASSOCIATES, INC.          CONSULTING ENGINEERS          5940 E. Central, Suite 200 ■ Wichita, KS 67208-4242          Phone 316/685-4114 ■ FAX 316/685-4444</p>		
<p>Sheet _____ of 12</p>		