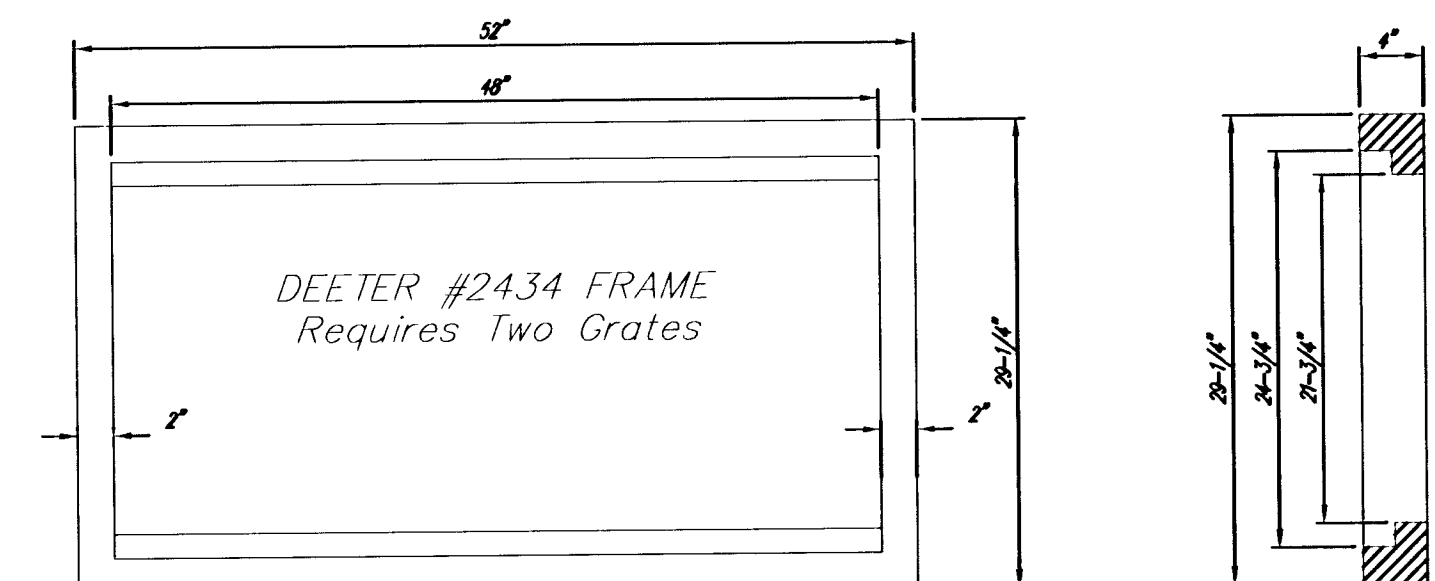
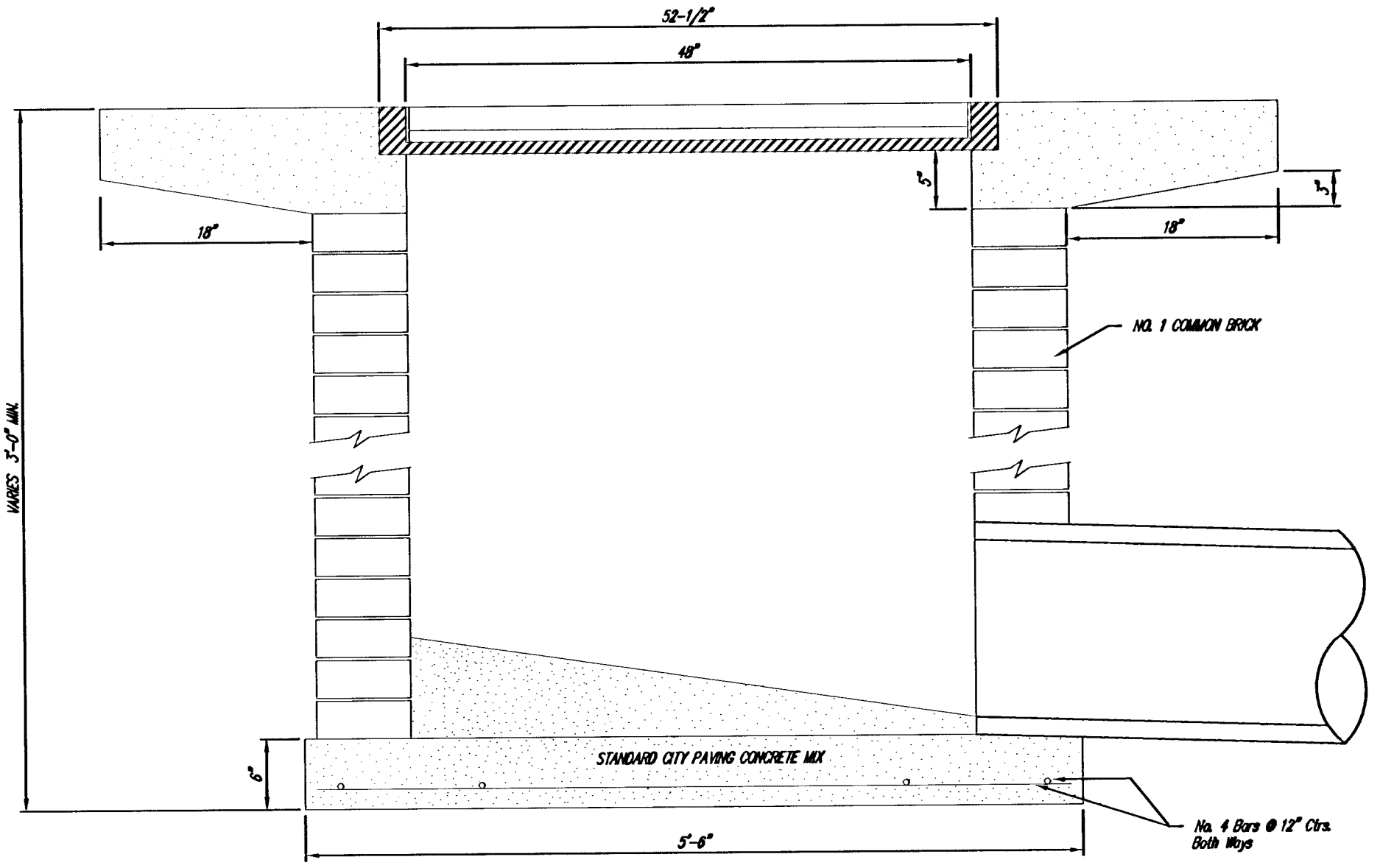
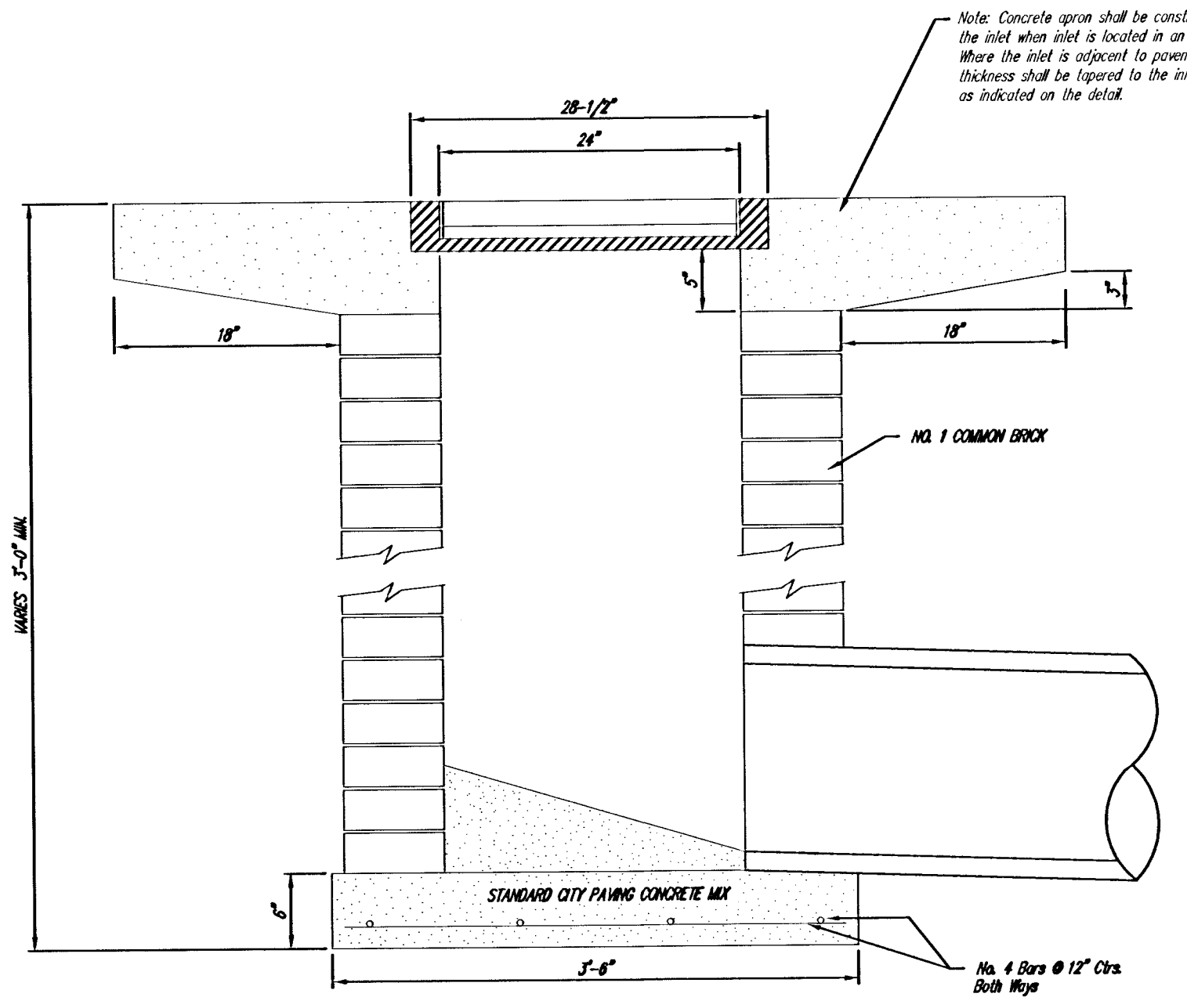
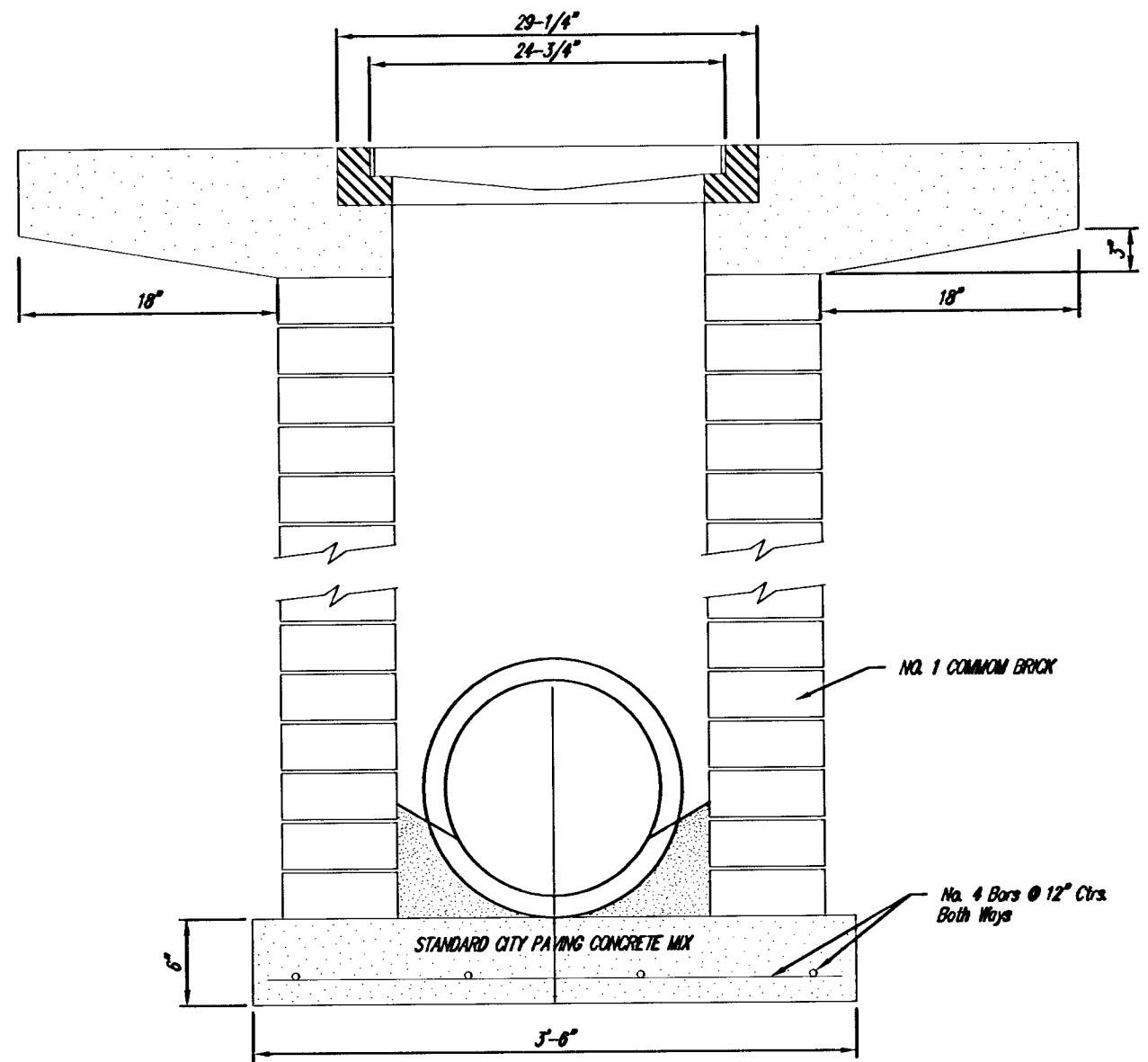


DEETER #2433 GRATE
24" x 24" Frame and Grate Detail



Double 24" x 24" Frame Detail

NOTE: Grates shall be imprinted on the top surface with "CITY OF WICHITA" using letters of least 1" in height. Other marking methods may be approved by the engineer.



<p>THE CITY OF WICHITA</p> <p>CITY ENGINEER'S OFFICE CITY HALL SEVENTH FLOOR 402 NORTH MAIN STREET WICHITA, KANSAS 67202 (316) 244-2267 CITY 244-4114 FAX</p>	DROP INLET 2' X 2' / 2' X 4'	
	M. E. LINDEBAK P.E. - CITY ENGINEER	
DESIGNED BY: T. Austin / S. Schmidt	PROJECT NUMBER	INDEX CODE
DRAWN BY: S. Schmidt	DATE	JUNE 2008

DROP INLET DETAILS

OAK CLIFF ESTATES 6TH ADDITION STORM SEWER IMPROVEMENTS DROP INLET DETAILS		CITY OF WICHITA, KANSAS JAMES ARMBUR, P.E. - CITY ENGINEER 1827 PPS (607879)	
POE & ASSOCIATES, INC. CONSULTING ENGINEERS 3940 E. Central, Suite 200 • Wichita, KS 67208-4242 Phone 316/685-4114 • FAX 316/685-4444			
DESIGNED BY: T. Austin / S. Schmidt	PROJECT NUMBER	INDEX CODE	DATE
DRAWN BY: S. Schmidt	DATE	JUNE 2008	
POE JOB NO.: 1827/Oak Cliff/base-sws.dwg	DATE:	09/06/08	
FINAL		6 of 12	