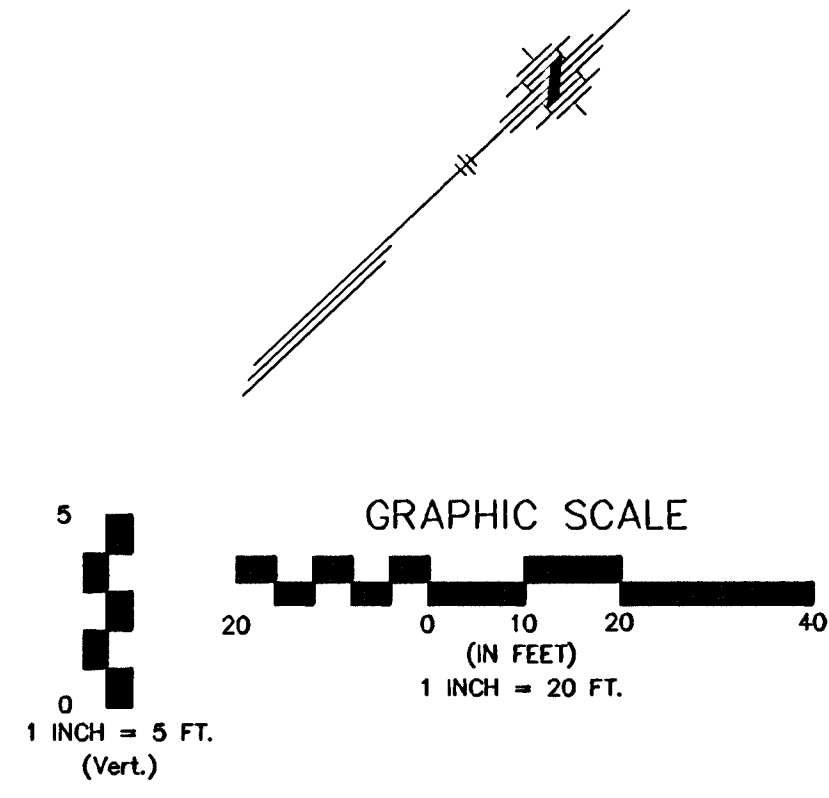
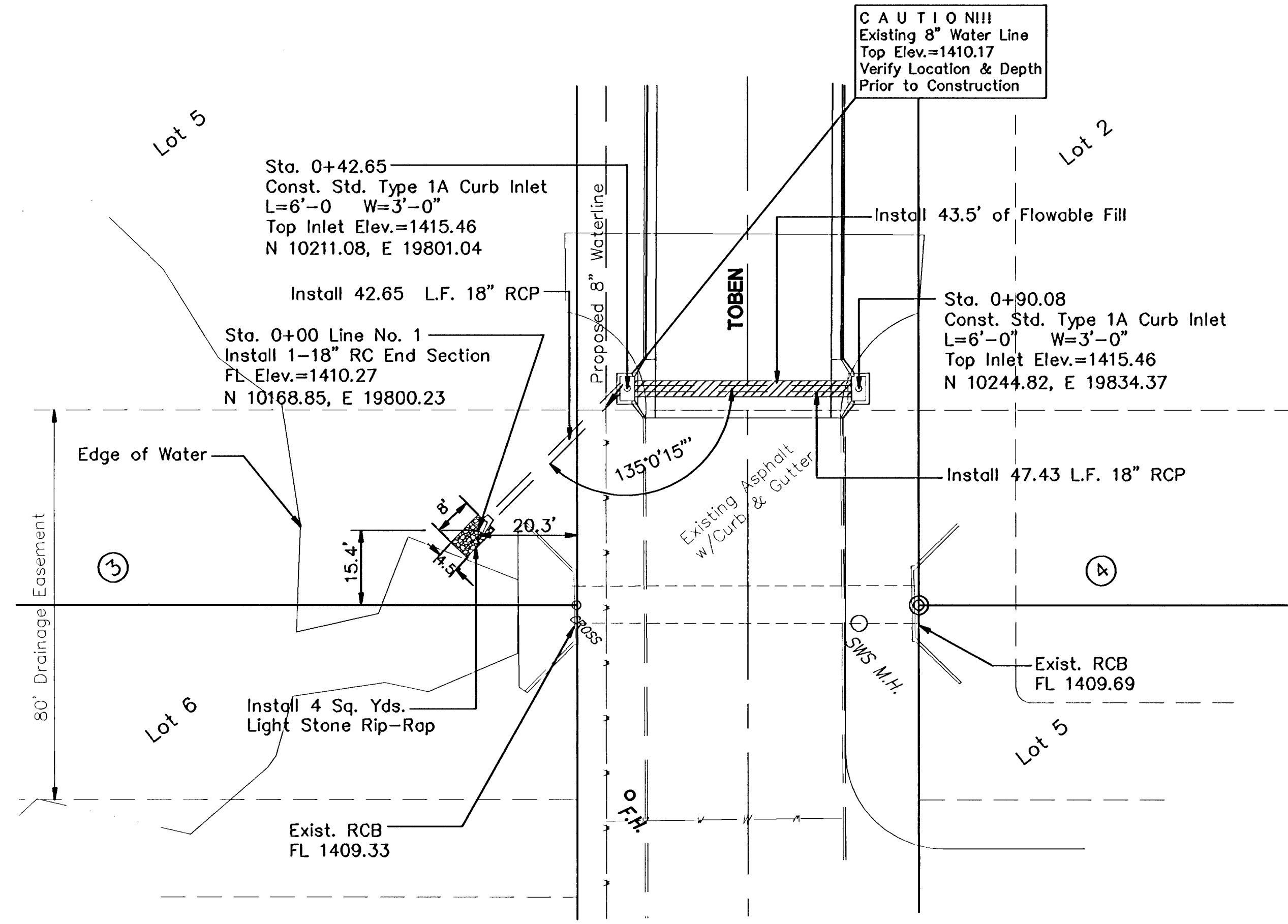
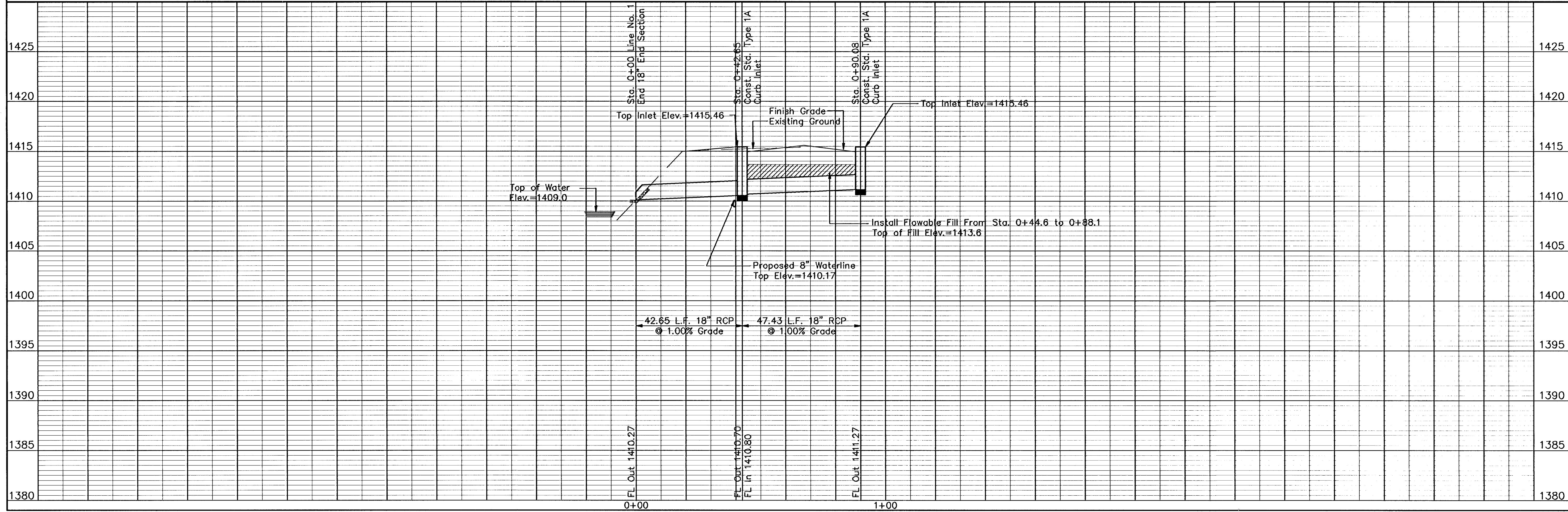


V:\B31\B31A\base.dwg Thu Jun 23 12:12:09 2005 Steve Schmitt, Poe & Associates



**LINE NO. 1**



No.	Date	By	Approved	Revision
1				
2				
3				

MEDITERRANEAN PLAZA ADDITION  
PRIVATE STREET IMPROVEMENTS  
STORM SEWER LINE NO. 1  
CITY OF WICHITA, KANSAS  
JAMES ARMOUR, P.E. - CITY ENGINEER  
167 PPP (607879)

POE & ASSOCIATES, INC.  
CONSULTING ENGINEERS  
3940 E. Central, Suite 200 • Wichita, KS 67208-4242  
Phone 316/685-4114 • FAX 316/685-4444



**FINAL**

Designed By: T. Austin/S. Schmitt  
Drawn By: S. Schmitt  
Poe Job No.: 1831A  
Date: June 2005