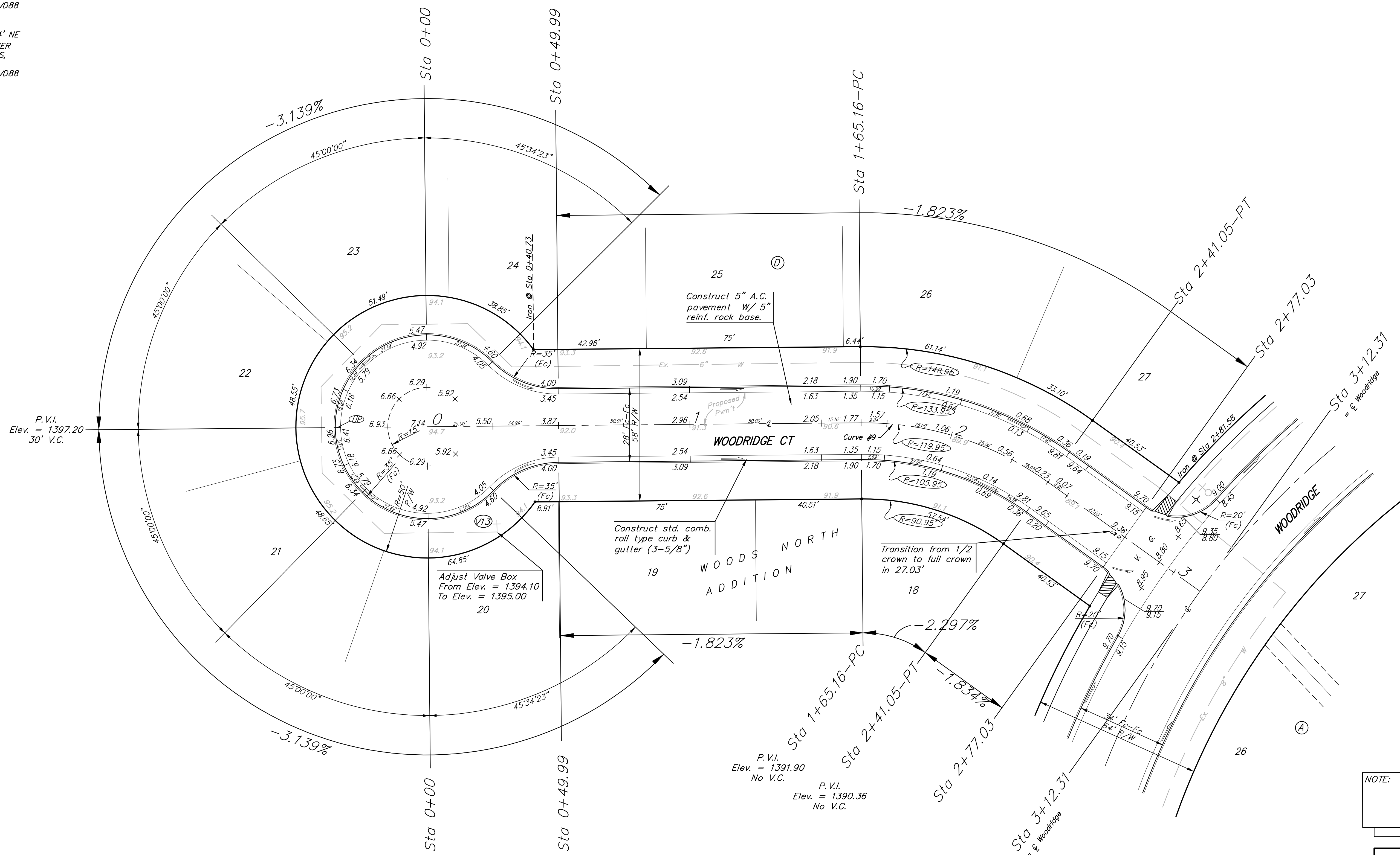
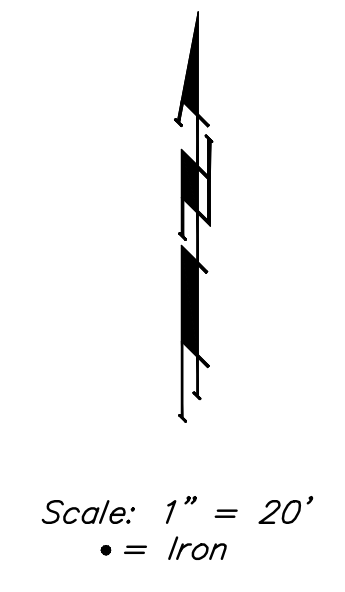


BENCHMARK:  
 CROSS CUT ON NORTH  
 END OF WEST HEADWALL  
 137.5' SOUTH & 12' WEST  
 OF THE INTERSECTION OF  
 29TH ST N & 127TH ST E.  
 ELEV. = 1382.45 NAVD88

Q OF WEST EDGE OF  
 CONCRETE DRIVE 31.4' NE  
 OF THE EAST 1/4 CORNER  
 OF SEC. 3, TWP 27-S,  
 R-2-E.  
 ELEV. = 1373.82 NAVD88



Curve #9

Curve Data Based on Centerline  
 Rad. = 119.95' Delta = 36° 15' 07" Tangent = 39.27'  
 Arc = 75.89' L.C. = 74.63' Def/Ft. = 14.33072 Min.

Station	Arc	FACE CHORD LENGTHS		Defl.	T. Defl.
		8' Lt.	8' Rt.		
1+65.16	-	-	-	0'00"00"	0'00"00"
1+75.00	9.84'	11.64'	8.03'	2'21"01"	2'21"01"
2+00.00	25.00'	29.53'	20.38'	5'58"16"	8'19"17"
2+25.00	25.00'	29.53'	20.38'	5'58"16"	14'17"33"
2+41.05	16.05'	18.98'	13.10'	3'50"00"	18'07"33"

NOTE: ROLL TYPE CURB & GUTTER TO BE CONSTRUCTED ON THE PAVEMENT SHOWN ON THIS SHEET. TOP OF CURB ELEVATIONS ARE GIVEN FOR FULL HEIGHT CURB.

	WOODS NORTH ADD. - PH. I	
	WOODRIDGE CT. STA 0+00 TO STA 3+12.31	
<small>Baughman Company, P.A. 315 Ellis St. Wichita, KS 67211 P 316-262-7271 F 316-262-0149          ENGINEERING   SURVEYING   PLANNING   LANDSCAPE ARCHITECTURE</small>		
PROJECT NUMBER 47284651	DESIGN JAK	DRAWN TMS
REVISIONS:	APPROVED	DATE 07/08
	SCALE Noted	SHEET <b>12 OF 37</b>
WoodNorth\Sns5		07-10-E964