

Static WSE = 1381.00
 100 RESERVE = 11384.00
 Maintain drop inlet sediment barriers per detail, sheet 22.

EROSION CONTROL PLAN LEGEND
 (Maintenance Details Found in the SMP2 Plan)

- DROP INLET PROTECTION
- CURB INLET PROTECTION
- DITCH CHECKS
- SILT FENCING
- CUT-OFF TRENCH
- BACK OF CURB PROTECTION
- EROSION CONTROL MAT
- TEMPORARY DITCH

NO SCALE

EROSION CONTROL QUANTITIES:

EROSION CONTROL MEASURES TO BE INSTALLED:

- 1 EA. STRAW BALE BARRIERS
- 12 EA. CURB INLET BARRIERS
- 6,770 S.Y. BACK OF CURB EROSION CONTROL MAT

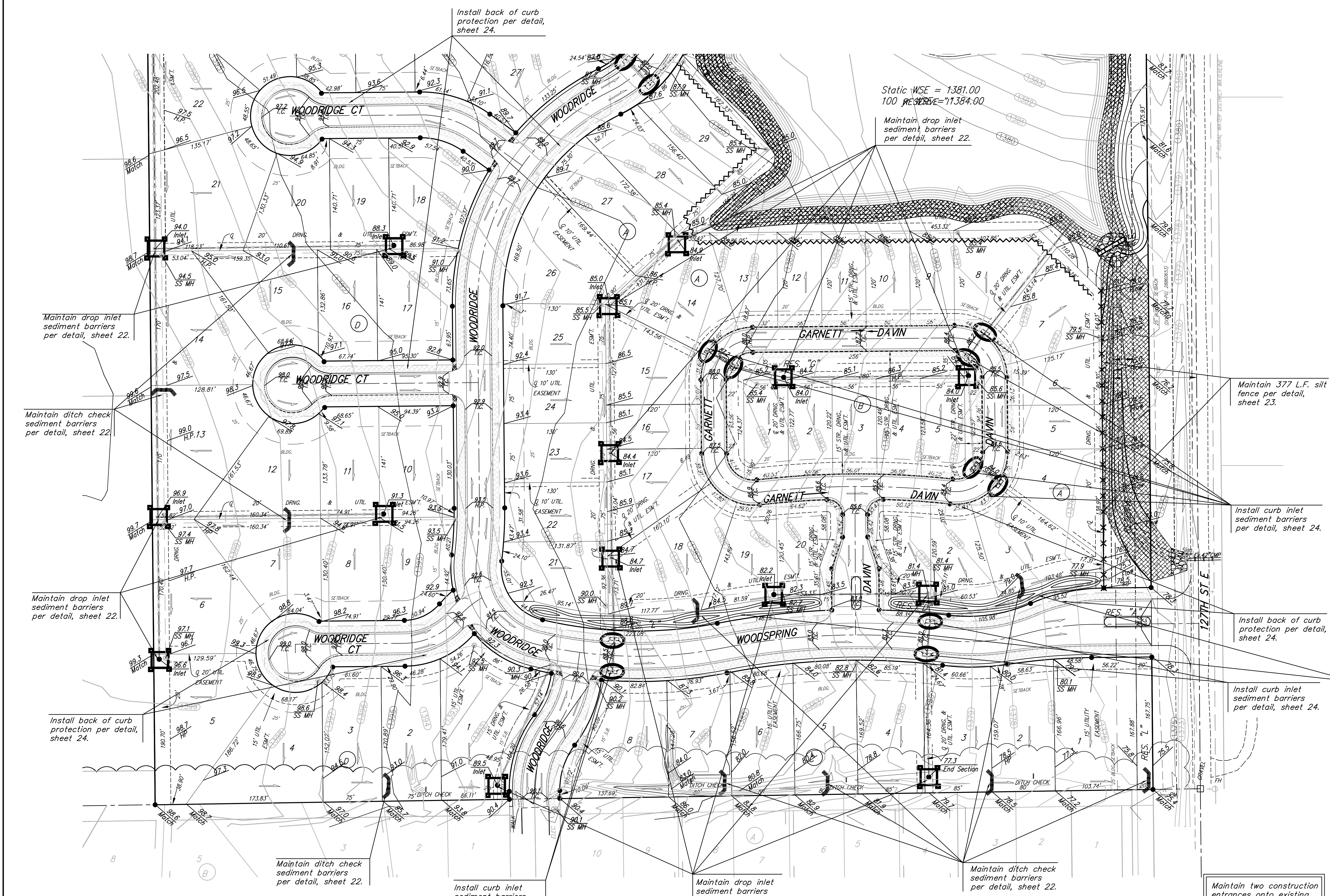
EXISTING EROSION CONTROL MEASURES TO BE MAINTAINED:*

- 1,427 L.F. SILT FENCE
- 19 EA. STRAW BALE BARRIERS
- 19 EA. DROP INLET BARRIERS
- 7,163 S.Y. EROSION CONTROL MAT
- 1,147 L.F. EROSION CONTROL BERM
- 2 EA. STABILIZED CONSTRUCTION ENTRANCE

* ALL EXISTING BMPs INCLUDING CONSTRUCTION ENTRANCE, SEDIMENT BARRIERS, SILT FENCE, CUT-OFF TRENCH, AND EROSION CONTROL MAT SHALL BE MAINTAINED AND REPAIRED IF NECESSARY.

Contractor to Build 640 L.F. 2'-3' high (1,200 CY) rough shaped berming in Reserves "D" & "E" as shown. Berms to have 20' width and 3:1 maximum slopes. All costs associated with berm construction shall be included in bid item, "Borrow Excavation."

		WOODS NORTH ADD. - PH. I	
		EROSION CONTROL PLAN WICHITA, KANSAS	
<small>Baughman Company, P.A. 315 Ellis St. Wichita, KS 67211 P 316-262-7271 F 316-262-0149 ENGINEERING SURVEYING PLANNING LANDSCAPE ARCHITECTURE</small>			
PROJECT NUMBER 412-84651	DESIGN ATD	DRAWN TMS	
REVISIONS:	APPROVED	DATE	07/08
	SCALE Noted	SHEET	18 OF 37
WoodsNorth\StrECPan1		07-10-E964	



Maintain drop inlet sediment barriers per detail, sheet 22.

Maintain ditch check sediment barriers per detail, sheet 22.

Maintain drop inlet sediment barriers per detail, sheet 22.

Install back of curb protection per detail, sheet 24.

Maintain ditch check sediment barriers per detail, sheet 22.

Install curb inlet sediment barriers per detail, sheet 24.

Maintain drop inlet sediment barriers per detail, sheet 22.

Maintain ditch check sediment barriers per detail, sheet 22.

Maintain two construction entrances onto existing paved roadway per detail, sheet 24.

Maintain 377 L.F. silt fence per detail, sheet 23.

Install curb inlet sediment barriers per detail, sheet 24.

Install back of curb protection per detail, sheet 24.

Install curb inlet sediment barriers per detail, sheet 24.