

# STORM WATER SEWER # 645

## TO SERVE PART OF LOT 12, BLOCK 1

### THE GATEWAY CENTER 2ND ADDITION

PROJECT NO. 468-84536      OCA # 751478

### BENCHMARK

BENCH MARK: CHISELED SQUARE ON TOP OF CURB AT EAST END OF CENTER MEDIAN AT THE NORTH ENTRANCE TO RESIDENCE INN, NORTH OF RESIDENCE INN BUILDING ELEVATION = 1390.29 (NGVD29)

### GENERAL NOTES

1. Contractor will be required to provide a minimum advance notice of seventy-two (72) hours to utility companies prior to starting any excavation as follows:

Kansas One-Call                      687-2470 or 811

The Contractor must notify the following in case of an emergency:

Cox Communications                260-7204  
 Kansas Gas Service                383-8600  
 Westar                                 383-8600  
 AT&T                                    1-800-286-8313  
 City of Wichita Water Department    262-6000  
 City of Wichita Sewer Maintenance    262-6000

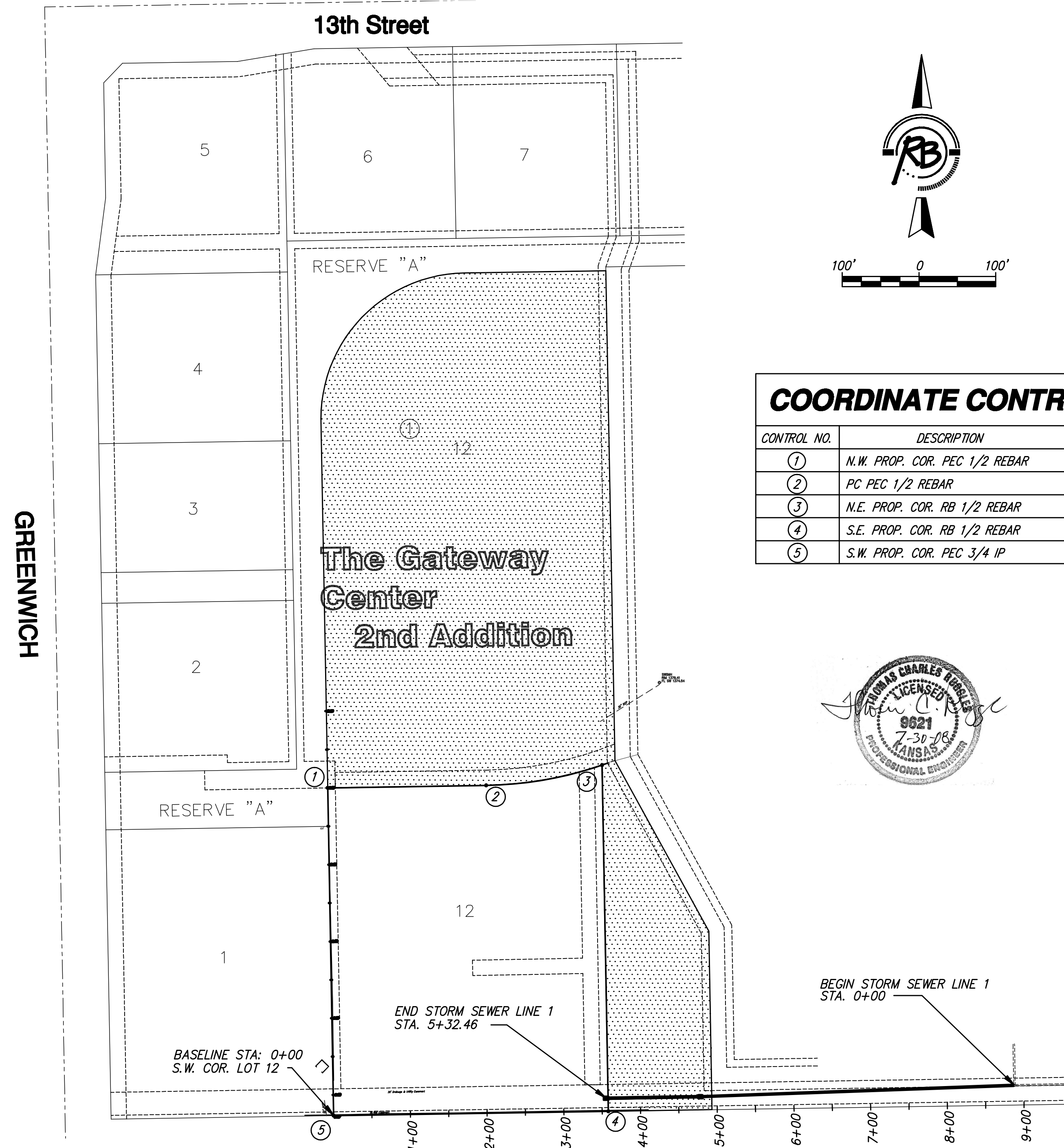
2. Underground utility service lines and overhead utility pole lines are to be adjusted as necessary by others prior to construction unless the plans specifically call for their adjustment by the Contractor or unless the plans specifically identify a utility to be adjusted by its owner during construction. Existing utilities and their location, as shown on the plans, represent the best information obtainable for design. Location information has been obtained from the various utility companies and is either from company record drawings or company-provided field locations. The Contractor will be required to work around existing utilities within the right-of-way which do not conflict with proposed construction.

3. Rubble from the removal of miscellaneous structures and excess excavation which is to be wasted shall be disposed of on sites to be provided by the Contractor. These sites shall be approved by the Engineer as to suitability, appearance and site location. Locations that, in the opinion of the Engineer, will leave an unsightly appearance will not be approved.

4. All disposal sites must be approved by the Kansas Department of Health and Environment. Material either stockpiled or disposed of in a flood plain would require a Kansas State Board of Agriculture permit. Any material dumped in waters of the United States or wetlands is subject to U.S. Corps permitting regulations. Any material buried or stockpiled beyond approved of Engineers construction limits would require additional archeological investigations unless buried in a previously approved borrow location.

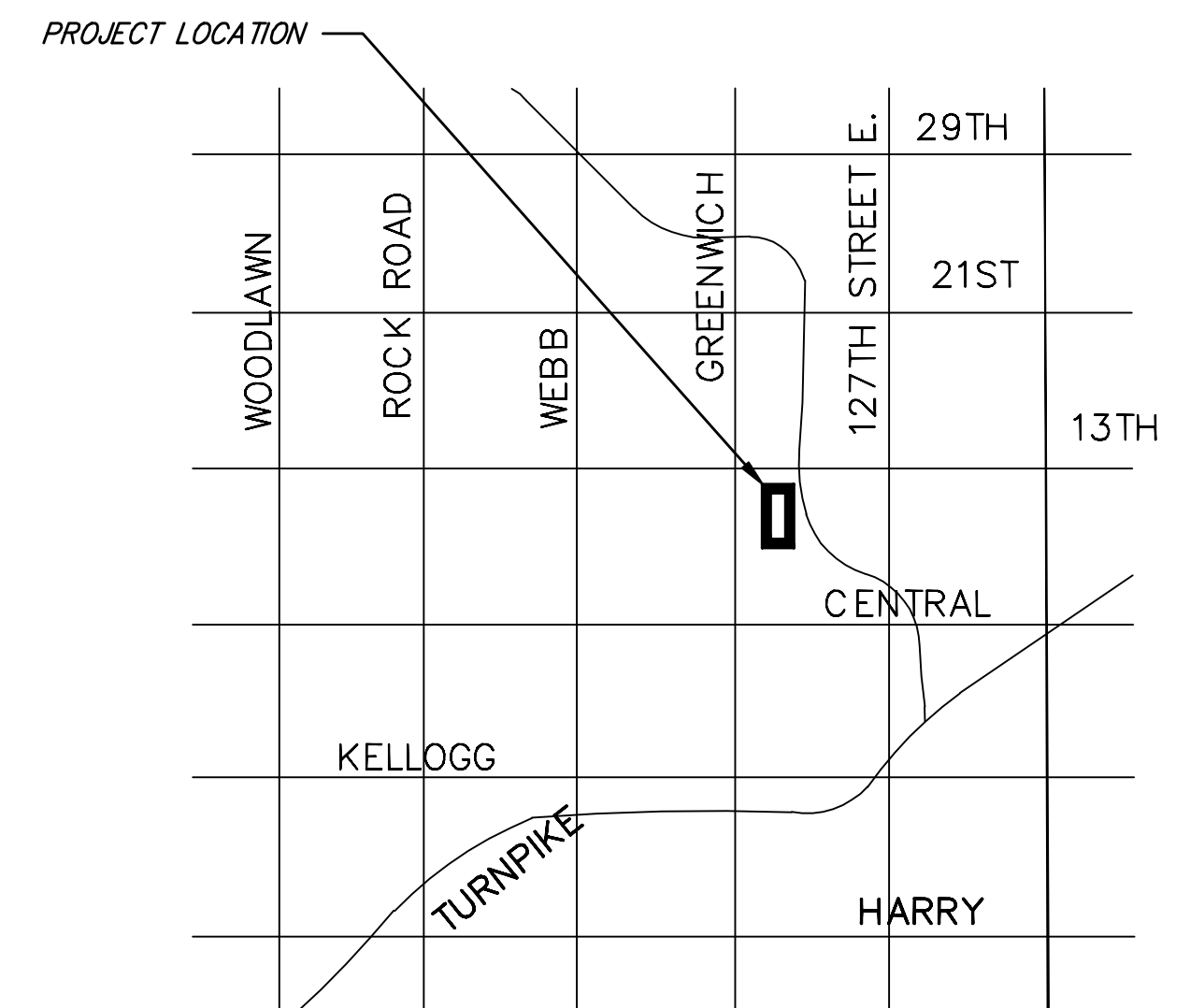
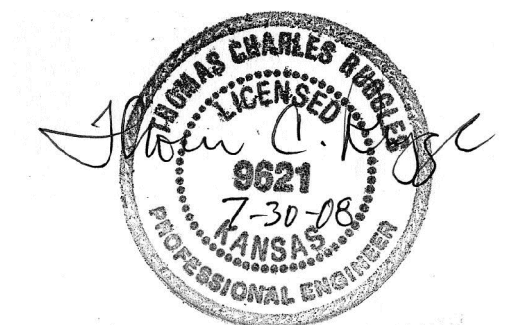
5. The Contractor shall give all property owners and/or tenants of developed property directly abutting the construction of this project a minimum of ten (10) days advance notice prior to start of construction.

6. The Contractor shall seed, fertilize and mulch all disturbed areas upon completion of construction. Subsidiary to the bid item for "Site Clearing and Restoration".



### COORDINATE CONTROL TABLE

CONTROL NO.	DESCRIPTION	NORTHING	EASTING
①	N.W. PROP. COR. PEC 1/2 REBAR	19964.51	19625.53
②	PC PEC 1/2 REBAR	19967.73	19632.11
③	N.E. PROP. COR. RB 1/2 REBAR	19994.17	19983.11
④	S.E. PROP. COR. RB 1/2 REBAR	19543.15	19991.44
⑤	S.W. PROP. COR. PEC 3/4 IP	19537.45	19633.48



### VICINITY MAP

**IMPROVEMENT DISTRICT**  
**CITY OF WICHITA, KANSAS**  
**JAMES L. ARMOUR, P.E. - CITY ENGINEER**

**Ruggles & Bohm, P.A.**  
 Engineering, Surveying, Land Planning  
 924 North Main                      (316) 264-8008  
 Wichita, Kansas 67203            (316) 264-4821 fax  
 www.rbkansas.com                 E-mail: info@rbkansas.com