

**GENERAL NOTES**

- UNLESS SHOWN OR STATED OTHERWISE ON THESE DRAWINGS, MATERIALS AND CONSTRUCTION SHALL BE IN ACCORDANCE WITH CITY OF WICHITA STANDARD SPECIFICATIONS.
- CONTRACTOR WILL BE REQUIRED TO PROVIDE A MINIMUM ADVANCE NOTICE OF SEVENTY-TWO (72) HOURS TO UTILITY COMPANIES PRIOR TO STARTING ANY EXCAVATION AS FOLLOWS:

KANSAS ONE-CALL 1-800-344-7233  
or 687-2470 (LOCAL WICHITA)

THE CONTRACTOR MUST NOTIFY THE FOLLOWING IN CASE OF AN EMERGENCY:

SBC (TELEPHONE)	800-870-8390
COX COMMUNICATIONS (CABLE)	262-0661
KANSAS GAS SERVICE (GAS)	832-3101
CITY OF WICHITA WATER & SEWER	262-6000
WESTAR (ELECTRIC)	261-6512
AQUILA (GAS)	800-303-0357
KANEB PIPELINE	1-316-773-9000

- THE CONTRACTOR SHALL BE RESPONSIBLE FOR PRESERVING PROPERTY IRONS. THE CONTRACTOR WILL BE REQUIRED TO RE-ESTABLISH ANY PROPERTY IRONS WHICH ARE DAMAGED OR DESTROYED BY HIS CONSTRUCTION OPERATIONS. SUCH IRONS SHALL BE RE-ESTABLISHED BY A LICENSED LAND SURVEYOR IN ACCORDANCE WITH STATE LAWS.

- EXISTING UTILITIES AND THEIR LOCATIONS, AS SHOWN ON THE PLANS REPRESENT THE BEST INFORMATION OBTAINABLE FOR DESIGN. LOCATION INFORMATION HAS BEEN OBTAINED FROM THE VARIOUS UTILITY COMPANIES AND IS EITHER FROM COMPANY RECORD DRAWINGS OR COMPANY PROVIDED FIELD LOCATIONS. THE PLAN LOCATIONS SHOWN ARE NOT GUARANTEED. ADDITIONAL EXISTING UTILITIES MAY ALSO BE ENCOUNTERED.

- RUBBLE FROM THE REMOVAL OF MISCELLANEOUS STRUCTURES AND EXCESS EXCAVATION WHICH IS TO BE WASTED SHALL BE DISPOSED OF ON SITES TO BE PROVIDED BY THE CONTRACTOR. THESE SITES SHALL BE APPROVED BY THE ENGINEER AS TO SUITABILITY, APPEARANCE AND SITE LOCATION. LOCATIONS THAT, IN THE OPINION OF THE ENGINEER, WILL LEAVE AN UNSIGHTLY APPEARANCE WILL NOT BE APPROVED. ALL DISPOSAL SITES MUST BE APPROVED BY THE KANSAS DEPARTMENT OF HEALTH AND ENVIRONMENT. MATERIAL EITHER STOCKPILED OR DISPOSED OF IN A FLOOD PLAIN WOULD REQUIRE A KANSAS STATE BOARD OF AGRICULTURE PERMIT. ANY MATERIAL DUMPED IN WATERS OF THE UNITED STATES OR WETLANDS IS SUBJECT TO U.S. CORPS OF ENGINEERS PERMITTING REGULATIONS. ANY MATERIAL BURIED OR STOCKPILED BEYOND APPROVED CONSTRUCTION LIMITS WOULD REQUIRE ADDITIONAL ARCHAEOLOGICAL INVESTIGATIONS UNLESS BURIED IN A PREVIOUSLY APPROVED BORROW LOCATION.

- COST OF EXCAVATION, HAULING, AND DUMPING OF EXCESS EXCAVATION SHALL BE SUBSIDIARY TO THE PROJECT.

- A PORTION OF EXCESS EXCAVATED MATERIAL SHALL BE MOUNDED AROUND MANHOLES WHICH EXTEND MORE THAN ONE (1) FOOT ABOVE THE EXISTING GROUND. SUCH MOUNDS SHALL BE CONSTRUCTED WITH A SIX (6) FOOT DIAMETER FLAT TOP WITH 4 TO 1 SIDE SLOPES DOWN TO THE ORIGINAL GROUND. THE ELEVATION OF THE FLAT TOP OF THE MOUND SHALL BE 0.4 FOOT BELOW THE TOP OF THE MANHOLE.

- ALL STUBS AND PLUGGED PIPES SHALL BE LOCATED WITH GREEN PLASTIC TAPE IN THE SAME MANNER AS RISERS.

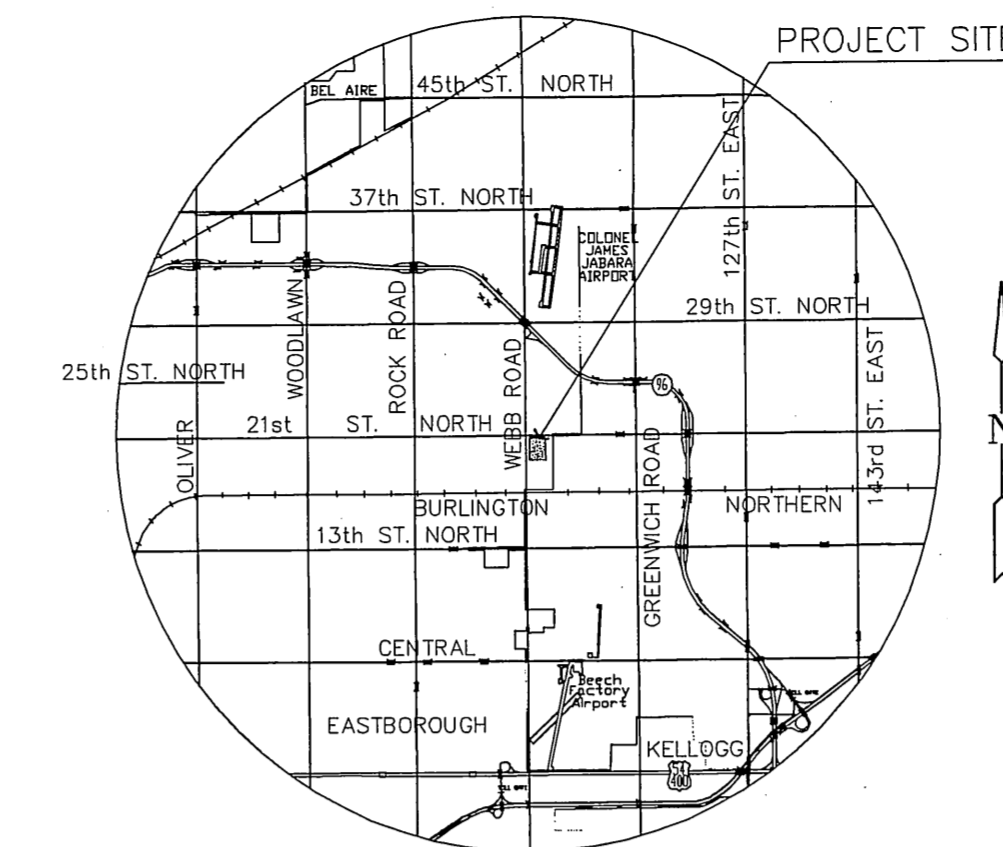
- CONNECTING TO EXISTING MANHOLES:  
PRIOR TO LAYING SEWER LINES USING EXISTING STUBS IN EXISTING MANHOLES, THE CONTRACTOR SHALL EXPOSE AND VERIFY THE ELEVATION, GRADE AND ALIGNMENT OF EXISTING STUBS AND NOTIFY THE ENGINEER OF ANY DEVIATION FROM THE PLAN. WHERE CONNECTION TO AN EXISTING MANHOLE THAT DOES NOT HAVE AN EXISTING STUB OR THE STUB IS UNUSABLE DUE TO ELEVATION GRADE OR ALIGNMENT, THE CONTRACTOR SHALL BORE CUT INTO EXISTING MANHOLE WALL TO MAKE CONNECTION USING APPROVED WATER STOP GASKET, AND RESHAPE THE EXISTING MANHOLE INVERT TO PROVIDE SMOOTH FLOW. THE COST OF CONNECTING TO EXISTING MANHOLES IS INCIDENTAL TO THE PROJECT.

- TREES AND SHRUBS IN PUBLIC RIGHT-OF-WAY WHICH ARE IN DIRECT CONFLICT WITH PROPOSED NEW CONSTRUCTION SHALL BE REMOVED BY THE CONTRACTOR WITH THE ENGINEER'S APPROVAL. TREES AND SHRUBS WHICH ARE NOT IN DIRECT CONFLICT WITH PROPOSED NEW CONSTRUCTION SHALL BE SAVED AND PROTECTED FROM DAMAGE.

- ALL DISTURBED AREAS NOT REQUIRED TO BE SODDED ARE TO BE SEEDDED WITH RYE GRASS AT A RATE OF 200 LBS. PER ACRE WITHIN 10 DAYS CONSTRUCTION. CONTRACTOR TO PREPARE GROUND PER CITY SPECIFICATIONS. COST IS SUBSIDIARY TO SITE PREPARATION AND RESTORATION.

**BENCHMARKS**

**BENCHMARK**  
Chiseled square on the north east corner of the RCB, +60' south of Shadybrook and Webb Road  
Elev.= 1385.43 (NGVD 29)



**VICINITY MAP**

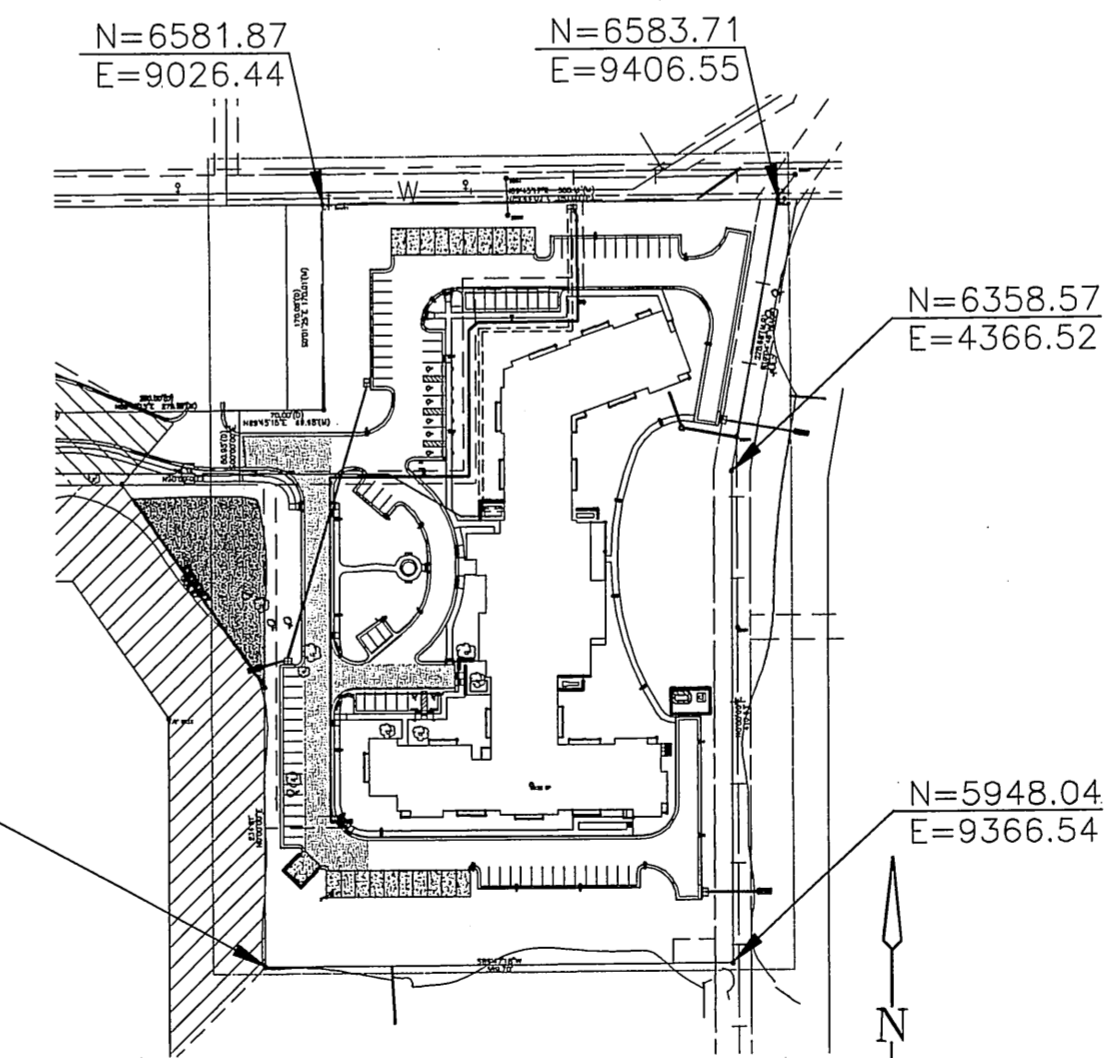
**CITY OF WICHITA  
PRIVATE PROJECT  
NO. 1854PPS (607861)**

APPROVED AS NOTED  
BY CITY ENGINEER OF WICHITA

SANITARY SEWERS *Julianne Kellman 6-11-08*

**NOTE TO CONTRACTOR**

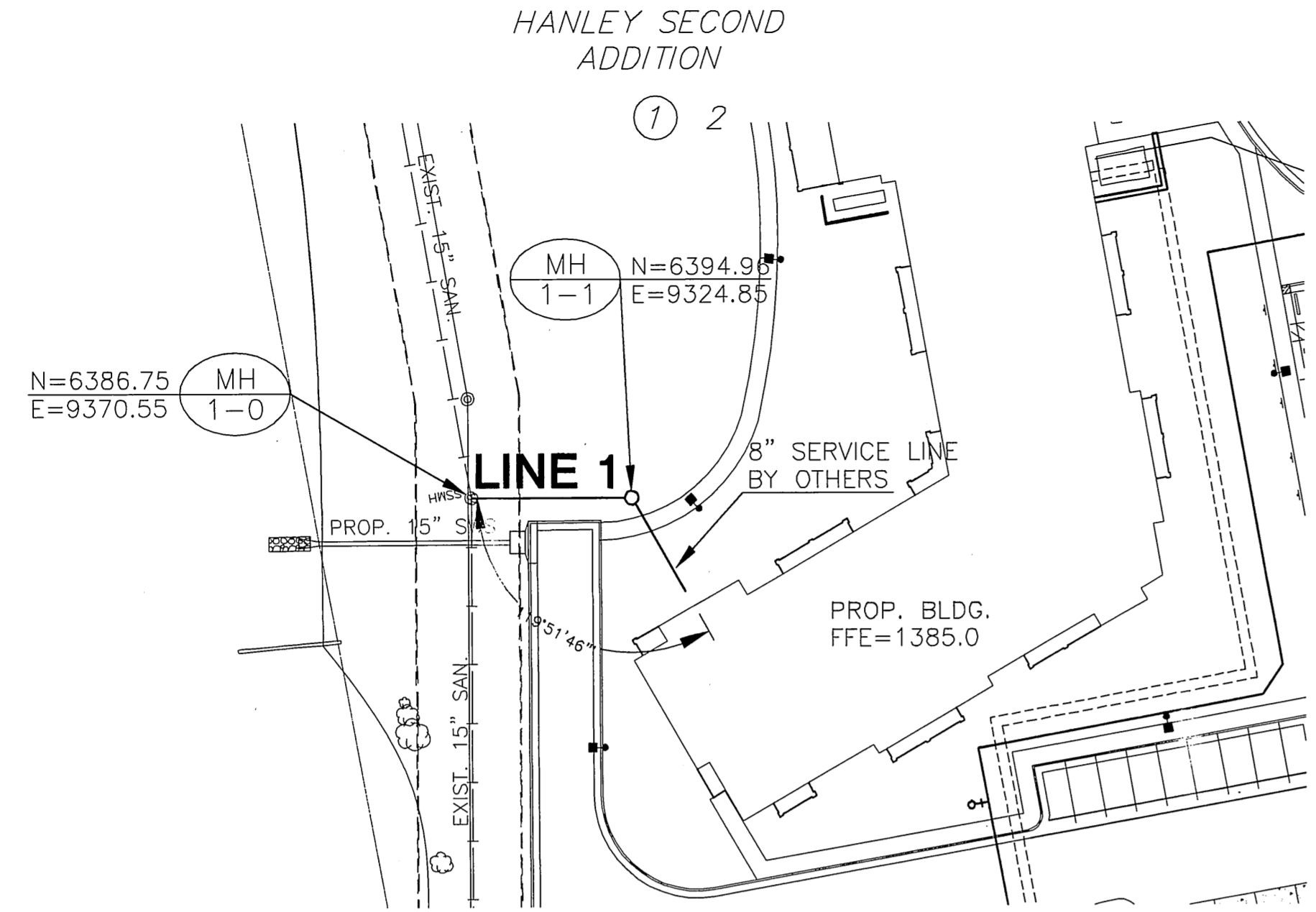
INSPECTION AND TESTING FOR THIS PROJECT IS TO BE PROVIDED BY A LICENSED CONSULTING ENGINEERING FIRM UNDER CONTRACT WITH THE CONTRACTOR. SAID INSPECTION TO BE IN ACCORDANCE WITH THE CITY OF WICHITA STANDARD CONSTRUCTION ENGINEERING PRACTICES AND CERTIFIED BY A LICENSED PROFESSIONAL ENGINEER. NO WORK SHALL BE PERFORMED IN DEDICATED EASEMENTS OR THE PUBLIC RIGHT-OF-WAY BY THE CONTRACTOR WITHOUT SUCH INSPECTION NOR SHALL ANY WORK BE COMMENCED IN DEDICATED EASEMENTS OR PUBLIC RIGHT-OF-WAY WITHOUT WRITTEN AUTHORIZATION BY THE CITY ENGINEER.



**LOCATION MAP**

NOTE:  
ALL LINES TO BE INSTALLED BY OTHERS ARE SUBJECT TO O.C.I. REVIEW.

NOTE:  
CONTRACTOR TO VERIFY LOCATION AND ELEVATION OF EXISTING UTILITIES PRIOR TO CONSTRUCTION.



NOTE:  
CONTRACTOR TO VERIFY LOCATION & DEPTH OF EXISTING UTILITIES PRIOR TO CONSTRUCTION.

**PLAN LINE 1**

PROFILE LINE 1	
STATION	ELEVATION
STA. 10+00.00, LINE 1	1385.00
EXIST. MANHOLE MH TOP = 1383.89	1383.89
STA. 10+00.00, LINE 1	1385.00
CONST. STD. MANHOLE MH TOP = 1385.34	1385.34
INSTALL 8" STUB (M/W)	1385.34
STA. 10+00.00, LINE 1	1385.00
EXIST. MANHOLE MH TOP = 1383.89	1383.89
STA. 10+00.00, LINE 1	1385.00
CONST. STD. MANHOLE MH TOP = 1385.34	1385.34
INSTALL 8" STUB (M/W)	1385.34
STA. 10+00.00, LINE 1	1385.00
EXIST. MANHOLE MH TOP = 1383.89	1383.89
STA. 10+00.00, LINE 1	1385.00
CONST. STD. MANHOLE MH TOP = 1385.34	1385.34
INSTALL 8" STUB (M/W)	1385.34
STA. 10+00.00, LINE 1	1385.00
EXIST. MANHOLE MH TOP = 1383.89	1383.89
STA. 10+00.00, LINE 1	1385.00
CONST. STD. MANHOLE MH TOP = 1385.34	1385.34
INSTALL 8" STUB (M/W)	1385.34
STA. 10+00.00, LINE 1	1385.00
EXIST. MANHOLE MH TOP = 1383.89	1383.89
STA. 10+00.00, LINE 1	1385.00
CONST. STD. MANHOLE MH TOP = 1385.34	1385.34
INSTALL 8" STUB (M/W)	1385.34
STA. 10+00.00, LINE 1	1385.00
EXIST. MANHOLE MH TOP = 1383.89	1383.89
STA. 10+00.00, LINE 1	1385.00
CONST. STD. MANHOLE MH TOP = 1385.34	1385.34
INSTALL 8" STUB (M/W)	1385.34
STA. 10+00.00, LINE 1	1385.00
EXIST. MANHOLE MH TOP = 1383.89	1383.89
STA. 10+00.00, LINE 1	1385.00
CONST. STD. MANHOLE MH TOP = 1385.34	1385.34
INSTALL 8" STUB (M/W)	1385.34
STA. 10+00.00, LINE 1	1385.00
EXIST. MANHOLE MH TOP = 1383.89	1383.89
STA. 10+00.00, LINE 1	1385.00
CONST. STD. MANHOLE MH TOP = 1385.34	1385.34
INSTALL 8" STUB (M/W)	1385.34
STA. 10+00.00, LINE 1	1385.00
EXIST. MANHOLE MH TOP = 1383.89	1383.89
STA. 10+00.00, LINE 1	1385.00
CONST. STD. MANHOLE MH TOP = 1385.34	1385.34
INSTALL 8" STUB (M/W)	1385.34
STA. 10+00.00, LINE 1	1385.00
EXIST. MANHOLE MH TOP = 1383.89	1383.89
STA. 10+00.00, LINE 1	1385.00
CONST. STD. MANHOLE MH TOP = 1385.34	1385.34
INSTALL 8" STUB (M/W)	1385.34
STA. 10+00.00, LINE 1	1385.00
EXIST. MANHOLE MH TOP = 1383.89	1383.89
STA. 10+00.00, LINE 1	1385.00
CONST. STD. MANHOLE MH TOP = 1385.34	1385.34
INSTALL 8" STUB (M/W)	1385.34
STA. 10+00.00, LINE 1	1385.00
EXIST. MANHOLE MH TOP = 1383.89	1383.89
STA. 10+00.00, LINE 1	1385.00
CONST. STD. MANHOLE MH TOP = 1385.34	1385.34
INSTALL 8" STUB (M/W)	1385.34
STA. 10+00.00, LINE 1	1385.00
EXIST. MANHOLE MH TOP = 1383.89	1383.89
STA. 10+00.00, LINE 1	1385.00
CONST. STD. MANHOLE MH TOP = 1385.34	1385.34
INSTALL 8" STUB (M/W)	1385.34
STA. 10+00.00, LINE 1	1385.00
EXIST. MANHOLE MH TOP = 1383.89	1383.89
STA. 10+00.00, LINE 1	1385.00
CONST. STD. MANHOLE MH TOP = 1385.34	1385.34
INSTALL 8" STUB (M/W)	1385.34
STA. 10+00.00, LINE 1	1385.00
EXIST. MANHOLE MH TOP = 1383.89	1383.89
STA. 10+00.00, LINE 1	1385.00
CONST. STD. MANHOLE MH TOP = 1385.34	1385.34
INSTALL 8" STUB (M/W)	1385.34
STA. 10+00.00, LINE 1	1385.00
EXIST. MANHOLE MH TOP = 1383.89	1383.89
STA. 10+00.00, LINE 1	1385.00
CONST. STD. MANHOLE MH TOP = 1385.34	1385.34
INSTALL 8" STUB (M/W)	1385.34
STA. 10+00.00, LINE 1	1385.00
EXIST. MANHOLE MH TOP = 1383.89	1383.89
STA. 10+00.00, LINE 1	1385.00
CONST. STD. MANHOLE MH TOP = 1385.34	1385.34
INSTALL 8" STUB (M/W)	1385.34
STA. 10+00.00, LINE 1	1385.00
EXIST. MANHOLE MH TOP = 1383.89	1383.89
STA. 10+00.00, LINE 1	1385.00
CONST. STD. MANHOLE MH TOP = 1385.34	1385.34
INSTALL 8" STUB (M/W)	1385.34
STA. 10+00.00, LINE 1	1385.00
EXIST. MANHOLE MH TOP = 1383.89	1383.89
STA. 10+00.00, LINE 1	1385.00
CONST. STD. MANHOLE MH TOP = 1385.34	1385.34
INSTALL 8" STUB (M/W)	1385.34
STA. 10+00.00, LINE 1	1385.00
EXIST. MANHOLE MH TOP = 1383.89	1383.89
STA. 10+00.00, LINE 1	1385.00
CONST. STD. MANHOLE MH TOP = 1385.34	1385.34
INSTALL 8" STUB (M/W)	1385.34
STA. 10+00.00, LINE 1	1385.00
EXIST. MANHOLE MH TOP = 1383.89	1383.89
STA. 10+00.00, LINE 1	1385.00
CONST. STD. MANHOLE MH TOP = 1385.34	1385.34
INSTALL 8" STUB (M/W)	1385.34
STA. 10+00.00, LINE 1	1385.00
EXIST. MANHOLE MH TOP = 1383.89	1383.89
STA. 10+00.00, LINE 1	1385.00
CONST. STD. MANHOLE MH TOP = 1385.34	1385.34
INSTALL 8" STUB (M/W)	1385.34
STA. 10+00.00, LINE 1	1385.00
EXIST. MANHOLE MH TOP = 1383.89	1383.89
STA. 10+00.00, LINE 1	1385.00
CONST. STD. MANHOLE MH TOP = 1385.34	1385.34
INSTALL 8" STUB (M/W)	1385.34
STA. 10+00.00, LINE 1	1385.00
EXIST. MANHOLE MH TOP = 1383.89	1383.89
STA. 10+00.00, LINE 1	1385.00
CONST. STD. MANHOLE MH TOP = 1385.34	1385.34
INSTALL 8" STUB (M/W)	1385.34
STA. 10+00.00, LINE 1	1385.00
EXIST. MANHOLE MH TOP = 1383.89	1383.89
STA. 10+00.00, LINE 1	1385.00
CONST. STD. MANHOLE MH TOP = 1385.34	1385.34
INSTALL 8" STUB (M/W)	1385.34
STA. 10+00.00, LINE 1	1385.00
EXIST. MANHOLE MH TOP = 1383.89	1383.89
STA. 10+00.00, LINE 1	1385.00
CONST. STD. MANHOLE MH TOP = 1385.34	1385.34
INSTALL 8" STUB (M/W)	1385.34
STA. 10+00.00, LINE 1	1385.00
EXIST. MANHOLE MH TOP = 1383.89	1383.89
STA. 10+00.00, LINE 1	1385.00
CONST. STD. MANHOLE MH TOP = 1385.34	1385.34
INSTALL 8" STUB (M/W)	1385.34
STA. 10+00.00, LINE 1	1385.00
EXIST. MANHOLE MH TOP = 1383.89	1383.89
STA. 10+00.00, LINE 1	1385.00
CONST. STD. MANHOLE MH TOP = 1385.34	1385.34
INSTALL 8" STUB (M/W)	1385.34
STA. 10+00.00, LINE 1	1385.00
EXIST. MANHOLE MH TOP = 1383.89	1383.89
STA. 10+00.00, LINE 1	1385.00
CONST. STD. MANHOLE MH TOP = 1385.34	1385.34
INSTALL 8" STUB (M/W)	1385.34
STA. 10+00.00, LINE 1	1385.00
EXIST. MANHOLE MH TOP = 1383.89	1383.89
STA. 10+00.00, LINE 1	1385.00
CONST. STD. MANHOLE MH TOP = 1385.34	1385.34
INSTALL 8" STUB (M/W)	1385.34
STA. 10+00.00, LINE 1	1385.00
EXIST. MANHOLE MH TOP = 1383.89	1383.89
STA. 10+00.00, LINE 1	1385.00
CONST. STD. MANHOLE MH TOP = 1385.34	1385.34
INSTALL 8" STUB (M/W)	1385.34
STA. 10+00.00, LINE 1	1385.00
EXIST. MANHOLE MH TOP = 1383.89	1383.89
STA. 10+00.00, LINE 1	1385.00
CONST. STD. MANHOLE MH TOP = 1385.34	1385.34
INSTALL 8" STUB (M/W)	1385.34
STA. 10+00.00, LINE 1	1385.00
EXIST. MANHOLE MH TOP = 1383.89	1383.89
STA. 10+00.00, LINE 1	1385.00
CONST. STD. MANHOLE MH TOP = 1385.34	1385.34
INSTALL 8" STUB (M/W)	1385.34
STA. 10+00.00, LINE 1	1385.00
EXIST. MANHOLE MH TOP = 1383.89	1383.89
STA. 10+00.00, LINE 1	1385.00
CONST. STD. MANHOLE MH TOP = 1385.34	1385.34
INSTALL 8" STUB (M/W)	1385.34
STA. 10+00.00, LINE 1	1385.00
EXIST. MANHOLE MH TOP = 1383.89	1383.89
STA. 10+00.00, LINE 1	1385.00
CONST. STD. MANHOLE MH TOP = 1385.34	1385.34
INSTALL 8" STUB (M/W)	1385.34
STA. 10+00.00, LINE 1	1385.00
EXIST. MANHOLE MH TOP = 1383.89	1383.89
STA. 10+00.00, LINE 1	1385.00
CONST. STD. MANHOLE MH TOP = 1385.34	1385.34
INSTALL 8" STUB (M/W)	1385.34
STA. 10+00.00, LINE 1	1385.00
EXIST. MANHOLE MH TOP = 1383.89	1383.89
STA. 10+00.00, LINE 1	1385.00
CONST. STD. MANHOLE MH TOP = 1385.34	1385.34
INSTALL 8" STUB (M/W)	1385.34
STA. 10+00.00, LINE 1	1385.00
EXIST. MANHOLE MH TOP = 1383.89	1383.89
STA. 10+00.00, LINE 1	1385.00
CONST. STD. MANHOLE MH TOP = 1385.34	1385.34
INSTALL 8" STUB (M/W)	1385.34
STA. 10+00.00, LINE 1	1385.00
EXIST. MANHOLE MH TOP = 1383.89	1383.89
STA. 10+00.00, LINE 1	1385.00
CONST. STD. MANHOLE MH TOP = 1385.34	1385.34
INSTALL 8" STUB (M/W)	1385.34
STA. 10+00.00, LINE 1	1385.00
EXIST. MANHOLE MH TOP = 1383.89	1383.89
STA. 10+00.00, LINE 1	1385.00
CONST. STD. MANHOLE MH TOP = 1385.34	1385.34
INSTALL 8" STUB (M/W)	1385.34
STA. 10+00.00, LINE 1	1385.00
EXIST. MANHOLE MH TOP = 1383.89	1383.89
STA. 10+00.00, LINE 1	1385.00
CONST. STD. MANHOLE MH TOP = 1385.34	1385.34
INSTALL 8" STUB (M/W)	1385.34
STA. 10+00.00, LINE 1	1385.00
EXIST. MANHOLE MH TOP = 1383.89	1383.89
STA. 10+00.00, LINE 1	1385.00
CONST. STD. MANH	