

GENERAL NOTES

1. WATERLINES SHALL BE INSTALLED IN ACCORDANCE WITH CITY OF WICHITA STANDARD SPECIFICATIONS, FOR THE "INSTALLATION OF WATER DISTRIBUTION SYSTEMS", NO. 14533.
2. AT LEAST 24 HOURS PRIOR TO BEGINNING ANY EXCAVATION (EXCLUDING WEEKENDS AND HOLIDAYS), THE CONTRACTOR SHALL CONTACT THE KANSAS ONE-CALL SYSTEM, A UTILITY LOCATION SERVICE, AT (316) 687-2470 TO REQUEST THE LOCAL UTILITY COMPANIES TO LOCATE ANY EXISTING LINES WITHIN THE PROJECT AREA.
3. THE CONTRACTOR MUST NOTIFY THE FOLLOWING IN CASE OF AN EMERGENCY:

COX COMMUNICATIONS	262-4270 or 263-2061
KANSAS GAS SERVICE	1-888-482-4950
WESTAR	1-800-383-1183
SBC	1-800-870-8390
AQUILA	1-800-303-0752
City of Wichita (Water & Sewer)	268-4555

4. ANY EXCESS EXCAVATION WHICH IS TO BE WASTED, SHALL BE DISPOSED OF ON SITES PROVIDED BY THE CONTRACTOR. THESE SITES SHALL BE APPROVED BY THE ENGINEER AS TO SUITABILITY, APPEARANCE, AND SITE LOCATION, AND SHALL BE DISPOSED OF IN ACCORDANCE WITH THE PROVISIONS OF THE KANSAS SOLID WASTE MANAGEMENT STATUTES AND REGULATIONS (KSA 65-3401, KAR 28-29-1 ET SEQ.)
5. THE CONTRACTOR WILL BE REQUIRED TO WORK AROUND EXISTING UTILITIES WITHIN THE RIGHT-OF-WAY. THE CONTRACTOR WILL DELIVER REMOVED FIRE HYDRANTS TO WATER DISTRIBUTION, 1703 SIM PARK DRIVE.
6. CONTRACTOR TO MAINTAIN TRAFFIC USING BARRICADES AND FLAGPERSONS WHILE WORKING WITHIN STREET RIGHT OF WAY.
7. ALL AREAS DISTURBED BY CONSTRUCTION INCLUDING STAGING AREAS, SHALL BE REPLANTED WITH GRASS SEED AT THE APPROPRIATE RATES APPROVED BY THE ENGINEER
8. EXISTING UTILITIES AND THEIR LOCATION, AS SHOWN ON THE PLANS, REPRESENT THE BEST AVAILABLE INFORMATION. IT SHOULD BE NOTED THAT OTHER BURIED LINES AND CABLE MAY EXIST WHICH ARE NOT SHOWN ON THESE PLANS. THE CONTRACTOR SHALL EXERCISE EXTREME CAUTION DURING TRENCHING OPERATIONS TO AVOID DAMAGING THESE LINES AND CABLES. ANY UTILITIES DAMAGED SHALL BE REPLACED OR REPAIRED IMMEDIATELY AS DIRECTED BY THE ENGINEER AT THE CONTRACTOR'S EXPENSE. THE CONTRACTOR SHALL PROTECT FROM DAMAGE AND SUPPORT EXISTING UTILITIES THROUGH CONSTRUCTION AS APPROVED BY THE UTILITY OWNER AND THE ENGINEER AT THE CONTRACTOR'S EXPENSE.
9. THE CONTRACTOR SHALL BE RESPONSIBLE FOR PRESERVING EXISTING PROPERTY IRONS AND RIGHT-OF-WAY MONUMENTS. THE CONTRACTOR SHALL BE REQUIRED TO RE-ESTABLISH ANY PROPERTY IRONS OR RIGHT-OF-WAY MONUMENTS WHICH ARE DAMAGED OR DESTROYED BY HIS CONSTRUCTION OPERATIONS. SUCH IRONS OR MONUMENTS SHALL BE RE-ESTABLISHED BY A LICENSED LAND SURVEYOR IN ACCORDANCE WITH STATE LAWS.
10. THE CONTRACTOR SHALL VERIFY HORIZONTAL AND VERTICAL LOCATION, TYPE, SIZE, AND CLASS OF EXISTING WATERLINES PRIOR TO CONSTRUCTION. EXISTING WATERLINE LOCATIONS AS SHOWN ON THE PLANS ARE APPROXIMATE. THE CONTRACTOR SHALL MAKE ADJUSTMENTS AS REQUIRED AND APPROVED BY THE ENGINEER. PROVISIONS FOR AND INSTALLATION OF PIPE ADAPTORS, SHORT SECTIONS OF PIPE, AND COUPLERS SHALL BE SUBSIDIARY TO OTHER PAY ITEMS OF WORK.
11. THE CONTRACTOR SHALL NOT START WORK ON THE PROJECT UNTIL THE PROJECT INSPECTOR IS ASSIGNED TO THE PROJECT AND IS PRESENT ON THE SITE. ANY WORK PERFORMED WITHOUT INSPECTION IS SUBJECT TO BE UNCOVERED FOR INSPECTION.
12. OPENING AND CLOSING WATER VALVES SHALL BE DONE SLOWLY TO PREVENT DAMAGE TO THE WATER DISTRIBUTION SYSTEM FROM WATER HAMMER. ALL VALVES CLOSED BY THE CONTRACTOR MUST BE REOPENED AS NEW CONSTRUCTION PERMITS. PROJECT INSPECTOR MUST ASCERTAIN THAT ANY VALVE CLOSED BY THE CONTRACTOR IS REOPENED. CONTRACTOR WILL BE PERMITTED TO OPERATE WATER VALVES ONLY WHEN THE PROJECT INSPECTOR ASSIGNED TO THE PROJECT IS PRESENT.
13. THE CONTRACTOR SHALL GIVE ALL PROPERTY OWNERS AND/OR TENANTS OF DEVELOPED PROPERTY DIRECTLY ABUTTING THE CONSTRUCTION OF THIS PROJECT A MINIMUM OF TEN (10) DAYS ADVANCE NOTICE PRIOR TO START OF CONSTRUCTION.
14. EACH BIDDER SHALL VISIT THE SITE OF THE PROJECT BEFORE SUBMITTING THE PROPOSAL FOR THIS WORK SO THAT HE WILL BE FULLY INFORMED OF THE EXISTING FIELD CONDITIONS AND THE OBSTACLES WHICH MIGHT BE ENCOUNTERED. UPON AWARD OF THE CONTRACT THE CONTRACTOR WILL NOT BE GRANTED ANY ADDITIONAL COMPENSATION WITH REGARDS TO TIME AND MONEY FOR CONDITIONS THAT MAY HAVE BEEN EVALUATED DURING ANY INSPECTION OF THE SITE.
15. ALL WATERLINES SHALL HAVE A MINIMUM DEPTH OF BURY OF 42 INCHES. THE WATER MAIN SHALL BE CONSTRUCTED ON THE ALIGNMENT SHOWN BY THE PLANS. THE COST FOR ANY NECESSARY TREE TRIMMING, CLEARING AND/OR GRUBBING SHALL BE INCLUDED IN THE PRICE BID FOR THE INSTALLED WATER MAIN PIPE. TREES AND SHRUBS IN PUBLIC RIGHT OF WAY WHICH ARE IN DIRECT CONFLICT WITH PROPOSED CONSTRUCTION SHALL BE REMOVED BY THE CONTRACTOR AND SHALL BE INCLUDED IN THE PRICE BID FOR THE INSTALLED WATER PIPE. TREES AND SHRUBS NOT IN DIRECT CONFLICT WITH PROPOSED CONSTRUCTION SHALL BE SAVED AND PROTECTED FROM DAMAGE.
16. INSPECTOR WILL NOTE ON AS BUILT PLAN LOCATIONS OF ALL FITTINGS AND VALVES. LOCATIONS WILL BE MEASURED FROM PROPERTY LINES, CURB LINES, AND/OR CENTER LINES. HYDRANT BRANCH LENGTH AND HYDRANT BURY LINE ELEVATION ARE TO MATCH FIELD CONDITIONS AND BE APPROVED BY THE ENGINEER.

WATER IMPROVEMENTS

TO SERVE

ADVANCED AESTHESIA

LOT 1, BLOCK 1, ACT PROPERTIES LLC ADDITION

WICHITA, SEGWICK COUNTY, KANSAS

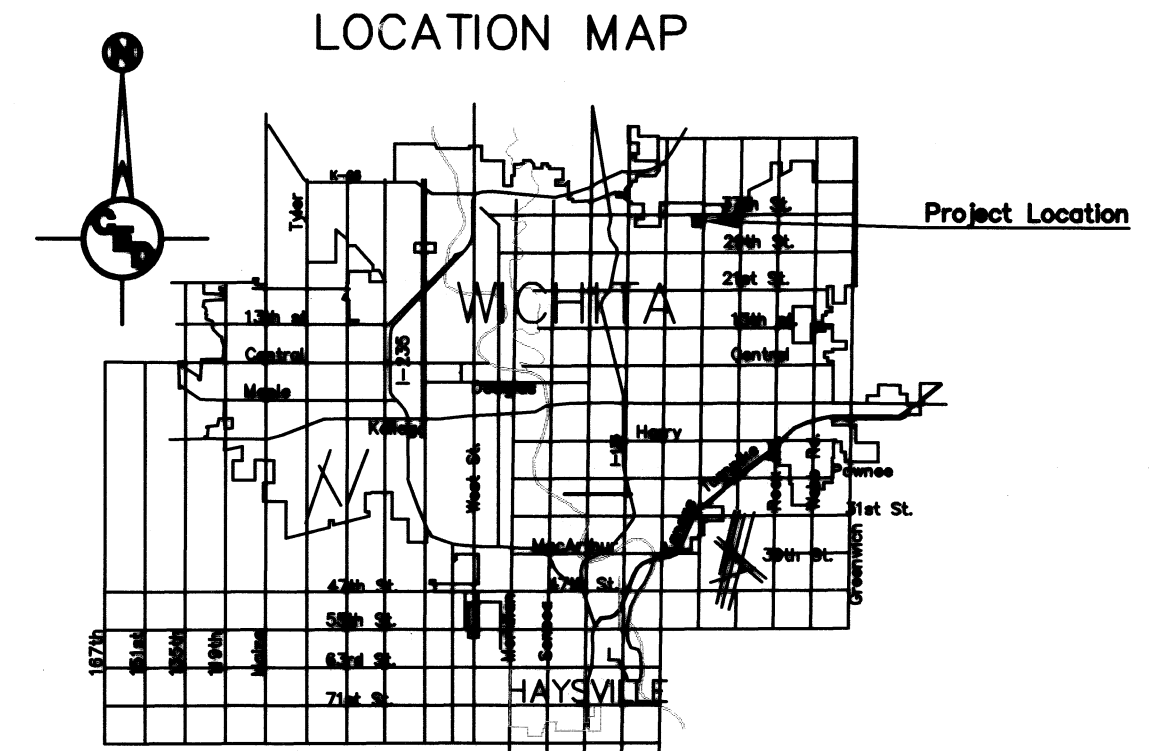
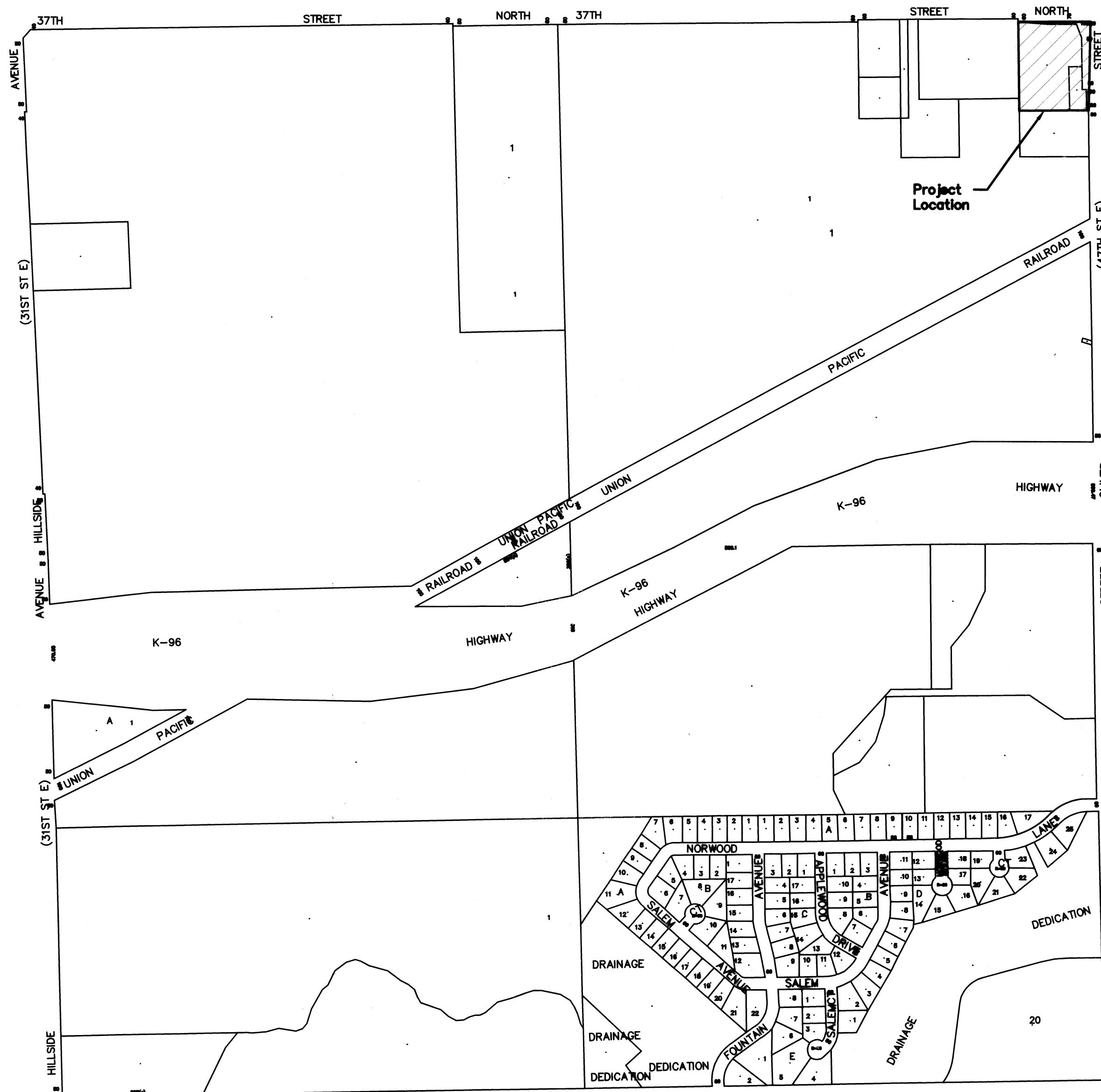
PRIVATE PROJECT NO.: 1413 PPW (O.C.A. NO. 607853),

JAMES L. ARMOUR, P.E., CITY ENGINEER

JUNE 2008

INDEX OF SHEETS

1. Title
2. Site Plan
3. Fire Hydrant Line Plan & Profile
4. Fire Protection Line Plan & Profile
5. Standard Water Detail



APPROVED AS NOTED
BY CITY ENGINEER OF WICHITA,
BY WICHITA WATER & SEWER DEPARTMENT
& BY WICHITA FIRE DEPARTMENT

Water Mains (Public Works) *LF 2 6/18/08*

Water Mains (W & S) *Jim Jones 6/23/08*

Fire Protection Line *WEN/RT 6-23-08*

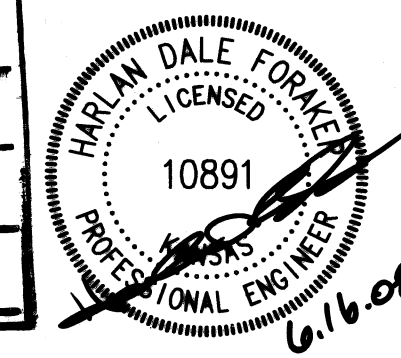
NOTE TO CONTRACTORS

PUBLIC PROPERTY:
INSPECTION AND TESTING FOR THE WATERLINE IS TO BE PROVIDED BY A LICENSED CONSULTING ENGINEERING FIRM UNDER CONTRACT WITH THE OWNER/DEVELOPER. SAID INSPECTION TO BE IN ACCORDANCE WITH THE CITY OF WICHITA STANDARD CONSTRUCTION ENGINEERING PRACTICES AND CERTIFIED BY A PROFESSIONAL ENGINEER LICENSED IN THE STATE OF KANSAS. NO WORK SHALL BE PERFORMED IN DEDICATED EASEMENTS OR THE PUBLIC RIGHT-OF-WAY BY THE CONTRACTOR WITHOUT SUCH INSPECTION NOR SHALL ANY WORK BE COMMENCED WITHOUT WRITTEN AUTHORIZATION BY THE CITY ENGINEER. ALL CONSTRUCTION AND MATERIALS SHALL COMPLY WITH THE CITY OF WICHITA SPECIFICATIONS AND STANDARDS (ON FILE AND AVAILABLE IN THE CITY ENGINEER'S OFFICE).

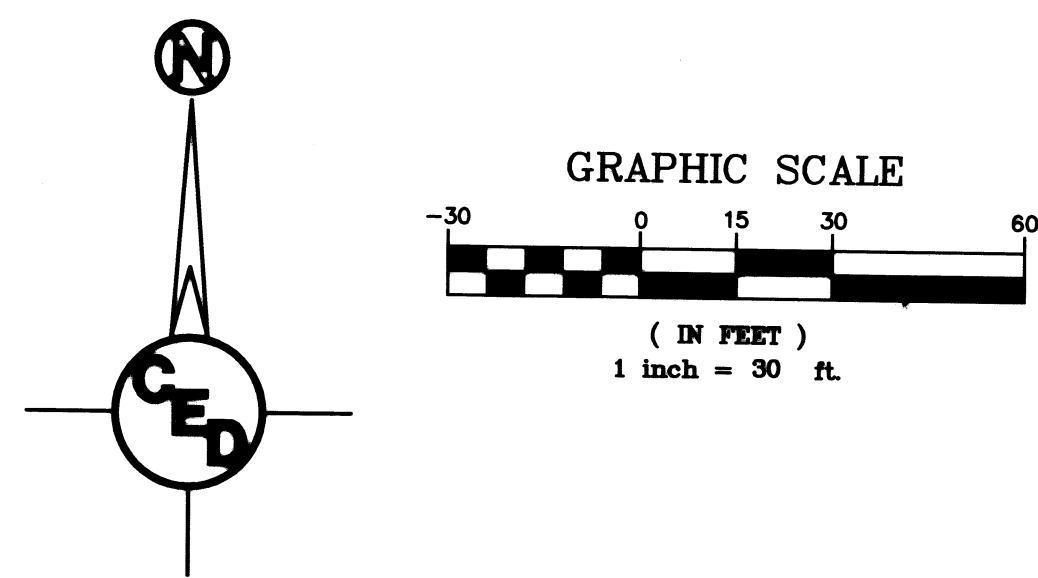
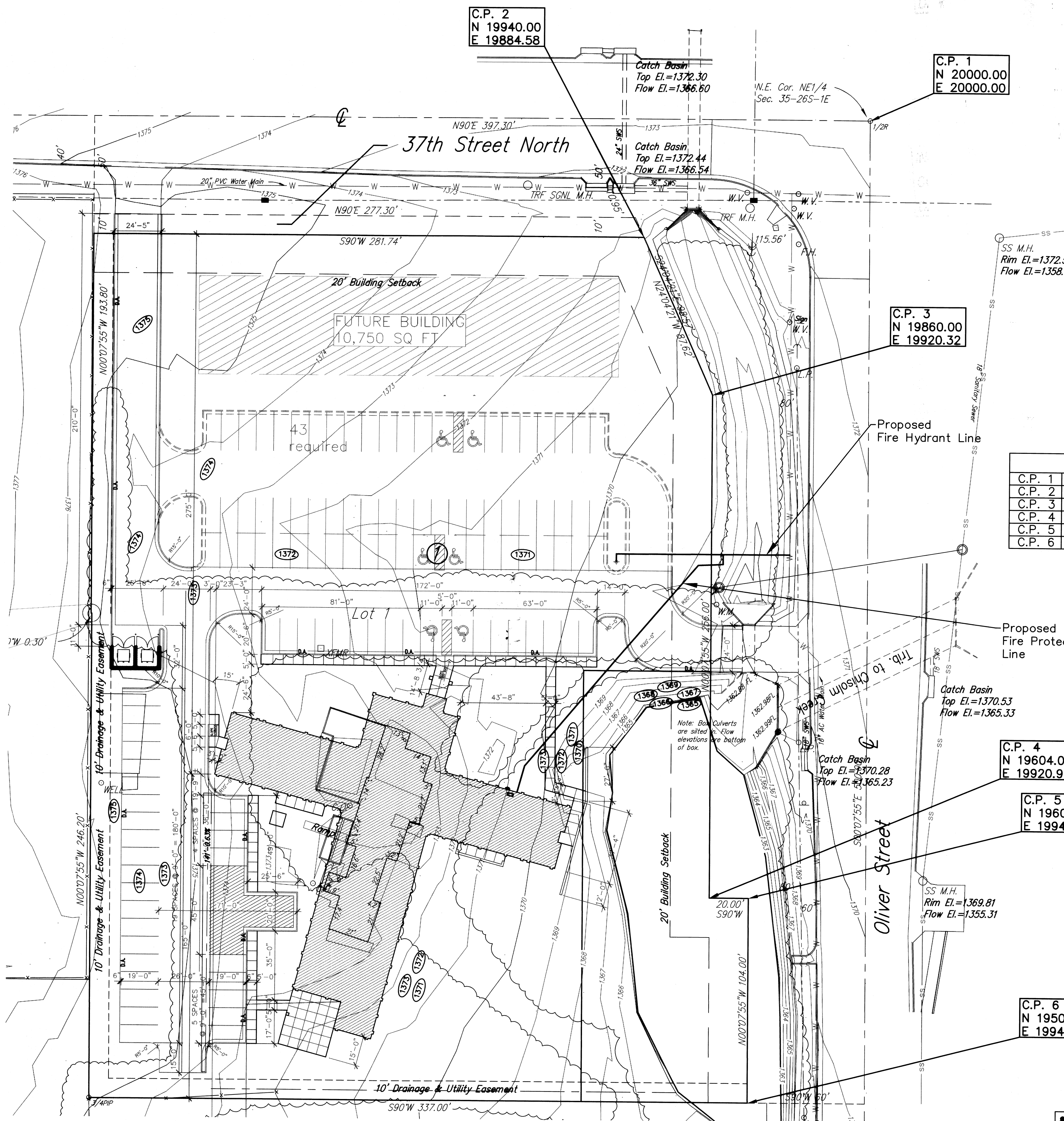
PRIVATE PROPERTY:
INSTALLATION AND TESTING FOR THE FIRE PROTECTION LINE IS TO BE PERFORMED BY A CITY OF WICHITA LICENSED FIRE PROTECTION CONTRACTOR IN ACCORDANCE WITH THE FIRE CODES AS ADOPTED BY THE CITY OF WICHITA. ALL MATERIAL AND CONSTRUCTION PRACTICES FOR THE FIRE PROTECTION LINE SHALL COMPLY WITH THE FIRE CODES AS ADOPTED BY THE CITY OF WICHITA (AVAILABLE FROM THE CITY OF WICHITA FIRE DEPARTMENT). THE CONTRACTOR SHALL NOT COMMENCE WORK WITHOUT NOTIFICATION AND APPROVAL OF THE WICHITA FIRE DEPARTMENT. INSPECTION OF THE FIRE PROTECTION LINE IS TO BE PROVIDED BY A LICENSED ENGINEERING FIRM UNDER CONTRACT WITH THE OWNER/DEVELOPER AND THE FIRE DEPARTMENT. THE CONTRACTOR SHALL NOT START WORK UNTIL THE PROJECT INSPECTOR IS ASSIGNED TO THE PROJECT AND PRESENT ON THE SITE. ANY WORK DONE WITHOUT INSPECTION WILL BE REQUIRED TO BE UNCOVERED FOR INSPECTION.

PROJECT LOCATED IN THE
NE 1/4, SEC. 35, T26S, R1E
WICHITA, SEGWICK COUNTY, KANSAS

AS BUILTS:
CONTRACTOR: *Midwest Fire Protection*
INSPECTOR: *Tom Jones*
COMPANY: *KE Miller*
DATE: *8/25/08*



CED PROJ. NO.: 20061357	
CERTIFIED ENGINEERING DESIGN, P.A.	
CED	810 WEST DOUGLAS, SUITE C WICHITA, KANSAS 67203 PH: (316) 262-8808 FAX: (316) 262-1669
	SHEET 1
	TOTAL 5



UTILITY LEGEND

= Fire Hydrant	= Flag Pole
= Water Meter	= SS Manhole
= Water Valve	= SWS Manhole
= Gas Meter	= Sign
= Gas Valve	= Misc. Post
= Telephone Riser	= Guy Anchor
= Mailbox	= Power Pole
= Deciduous Tree or Shrub	= Light Pole
= Existing Fence	
= Right of Way Line	
= Underground Telephone	
= Underground Electric	
= Overhead Electric	
= Water Line	
= Sanitary Sewer	
= Gas Line	
= Cable TV or Fiber Optic	

HORIZONTAL CONTROL POINTS

C.P. 1	N 20000.00	E 20000.00	1/2" Rebar Found
C.P. 2	N 19940.00	E 19884.58	Property Corner
C.P. 3	N 19860.00	E 19920.32	Property Corner
C.P. 4	N 19604.00	E 19920.91	Property Corner
C.P. 5	N 19604.00	E 19940.91	Property Corner
C.P. 6	N 19500.00	E 19941.15	Property Corner

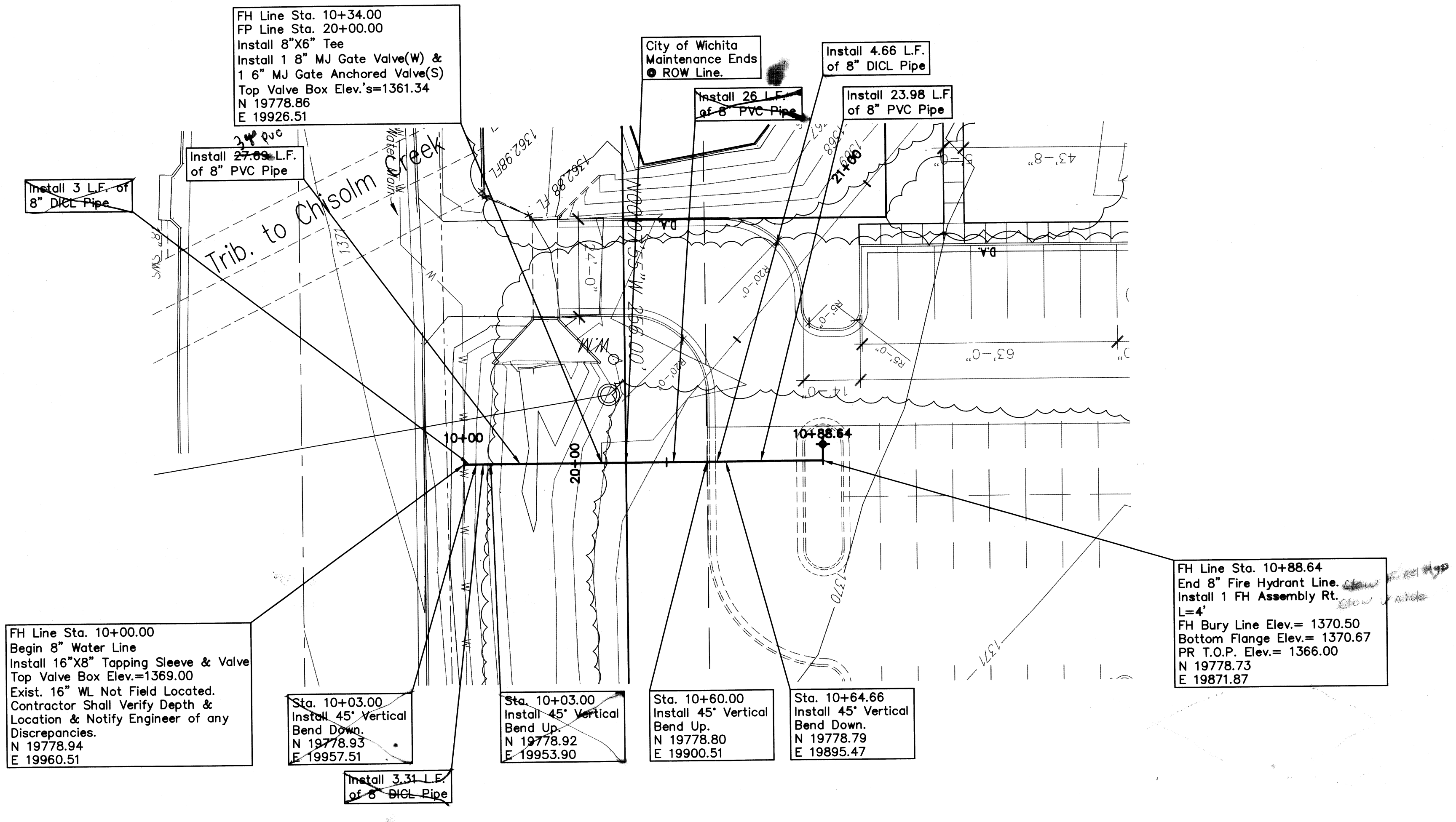
Benchmark: City of Wichita Std Disc
 SW Cor. of Hubguard
 100± East of Oliver on 37th St. N.
 Elevation = 1374.24 NGVD

UTILITIES SHOWN REPRESENT THE BEST INFORMATION AVAILABLE FOR DESIGN. ADDITIONAL UTILITIES MAY BE PRESENT ON THIS PROJECT. THE CONTRACTOR SHALL BE RESPONSIBLE FOR DETERMINING THE EXACT LOCATION, DEPTH AND SIZE OF ALL UNDERGROUND UTILITIES PRIOR TO CONSTRUCTION. THE CONTRACTOR SHALL BE LIABLE FOR ANY DAMAGE CAUSED BY THE FAILURE TO DO SO.

ADVANCED ANESTHESIA
SITE PLAN
 WICHITA, SEDGWICK COUNTY, KS
 CED PROJ. NO.: 20061357
CERTIFIED ENGINEERING DESIGN, P.A.
 810 WEST DOUGLAS, SUITE C
 WICHITA, KANSAS 67203
 PH.(316)262-8808 FAX.(316)262-1669

DESIGNED: HDF	SCALE: 1"=30'	SHEET
DRAWN: JDT	DATE: 06-08	2
CHECKED: HDF	CED FILE: Advanced Anesthesia	TOTAL: 5

SURVEY DISCLAIMER:
 TOPOGRAPHIC SURVEY AND CONTOUR MAP USED IN PREPARING PLANS WAS PROVIDED BY SAVOY COMPANY, P.A., 535 S. EMPORIA, SUITE 104, WICHITA, KS. ENGINEER DOES NOT GUARANTEE SURVEY ELEVATIONS FOR ACCURACY. CONTRACTOR SHALL VERIFY ELEVATIONS AND NOTIFY ENGINEER OF ANY DISCREPANCIES.

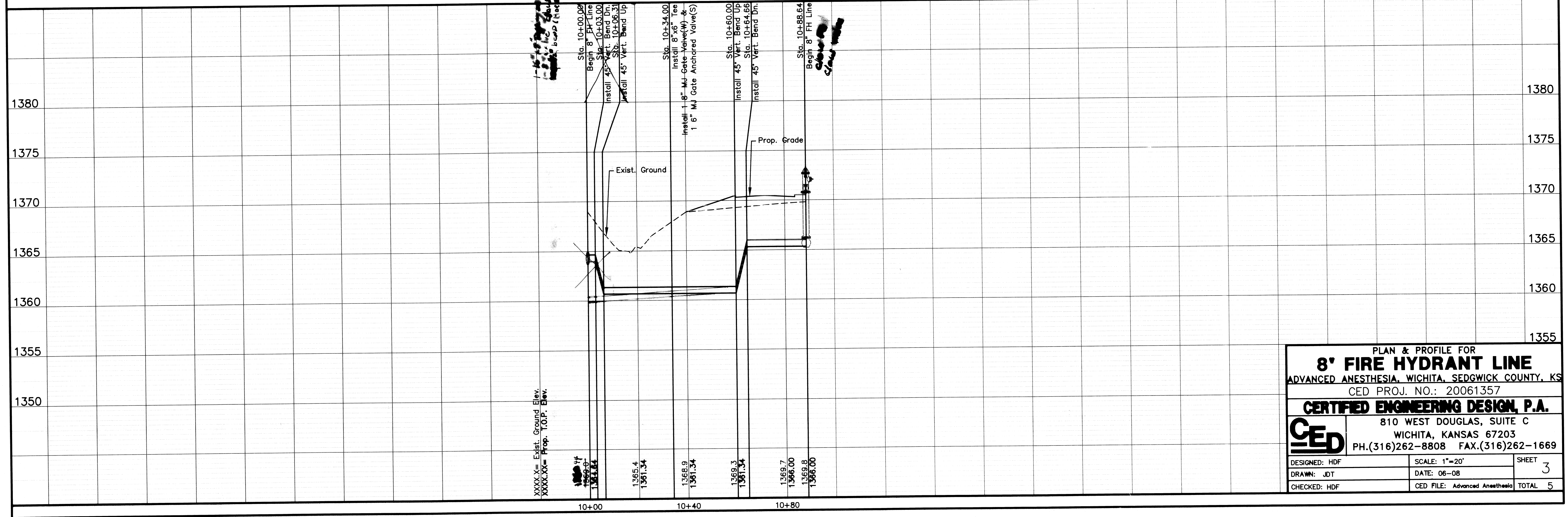


UTILITY LEGEND

= Fire Hydrant	= Flag Pole
= Water Meter	= SS Manhole
= Water Valve	= SWS Manhole
= Gas Meter	= Sign
= Gas Valve	= Misc. Post
= Telephone Riser	= Guy Anchor
= Mailbox	= Power Pole
= Light Pole	= Deciduous Tree or Shrub
= Existing Fence	= Right of Way Line
= Underground Telephone	= Underground Electric
= Overhead Electric	= Water Line
= Sanitary Sewer	= Gas Line
= Cable TV or Fiber Optic	

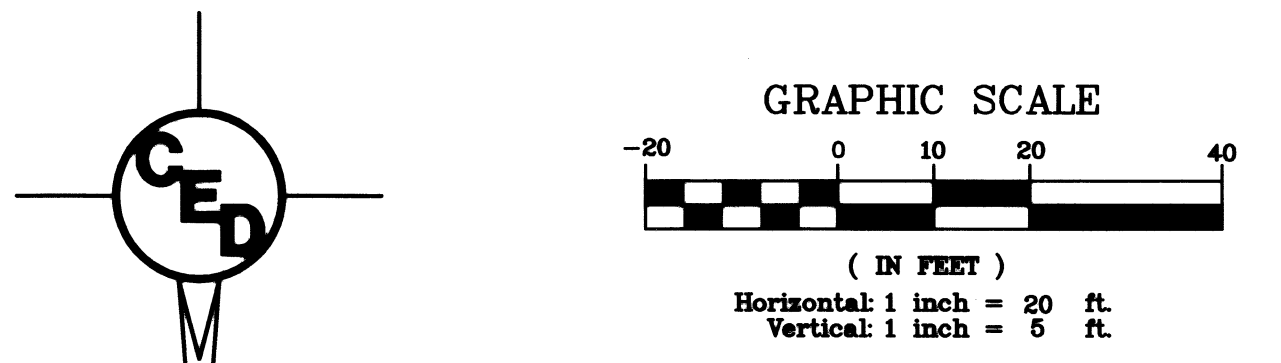
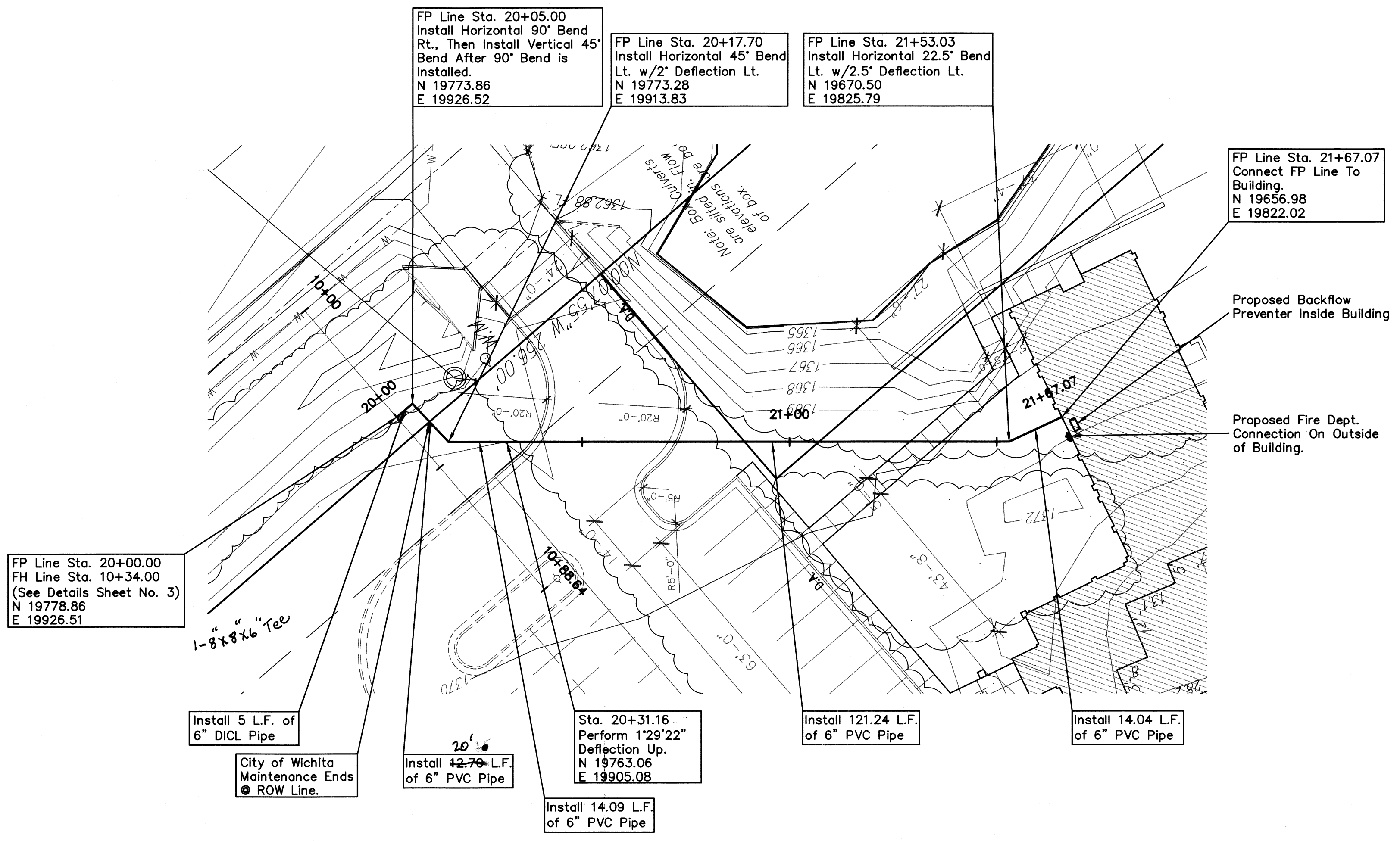
Benchmark: City of Wichita Std Disc
 SW Cor. of Hubguard
 100± East of Oliver on 37th St. N.
 Elevation = 1374.24 NGVD

UTILITIES SHOWN REPRESENT THE BEST INFORMATION AVAILABLE FOR DESIGN. ADDITIONAL UTILITIES MAY BE PRESENT ON THIS PROJECT. THE CONTRACTOR SHALL BE RESPONSIBLE FOR DETERMINING THE EXACT LOCATION, DEPTH AND SIZE OF ALL UNDERGROUND UTILITIES PRIOR TO CONSTRUCTION. THE CONTRACTOR SHALL BE LIABLE FOR ANY DAMAGE CAUSED BY THE FAILURE TO DO SO.



PLAN & PROFILE FOR
8" FIRE HYDRANT LINE
 ADVANCED ANESTHESIA, WICHITA, SEDGWICK COUNTY, KS
 CED PROJ. NO.: 20061357
CERTIFIED ENGINEERING DESIGN, P.A.
 810 WEST DOUGLAS, SUITE C
 WICHITA, KANSAS 67203
 PH.(316)262-8808 FAX.(316)262-1669

DESIGNED: HDF	SCALE: 1"=20'	SHEET
DRAWN: JDT	DATE: 06-08	3
CHECKED: HDF	CED FILE: Advanced Anesthesia	TOTAL 5

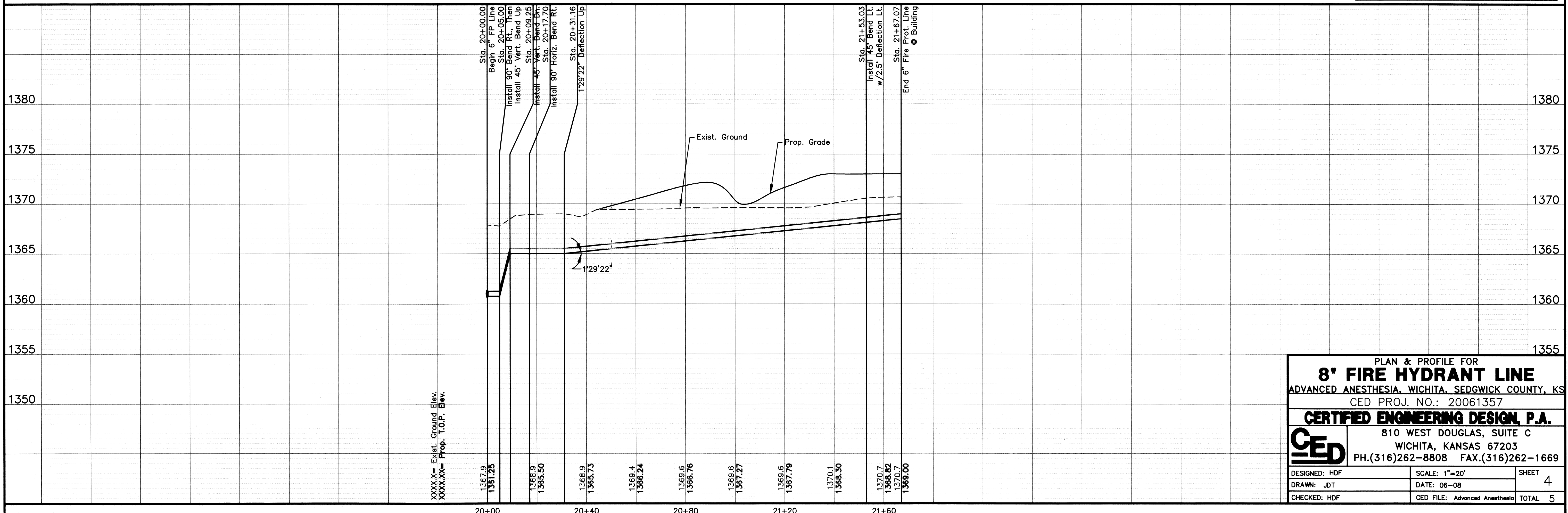


UTILITY LEGEND

= Fire Hydrant	= Flag Pole
= Water Meter	= SS Manhole
= Water Valve	= SWS Manhole
= Gas Meter	= Sign
= Gas Valve	= Misc. Post
= Telephone Riser	= Guy Anchor
= Mailbox	= Power Pole
= Deciduous Tree or Shrub	= Light Pole
= Existing Fence	
= Right of Way Line	
= Underground Telephone	
= Underground Electric	
= Overhead Electric	
= Water Line	
= Sanitary Sewer	
= Gas Line	
= Cable TV or Fiber Optic	

UTILITIES SHOWN REPRESENT THE BEST INFORMATION AVAILABLE FOR DESIGN. ADDITIONAL UTILITIES MAY BE PRESENT ON THIS PROJECT. THE CONTRACTOR SHALL BE RESPONSIBLE FOR DETERMINING THE EXACT LOCATION, DEPTH AND SIZE OF ALL UNDERGROUND UTILITIES PRIOR TO CONSTRUCTION. THE CONTRACTOR SHALL BE LIABLE FOR ANY DAMAGE CAUSED BY THE FAILURE TO DO SO.

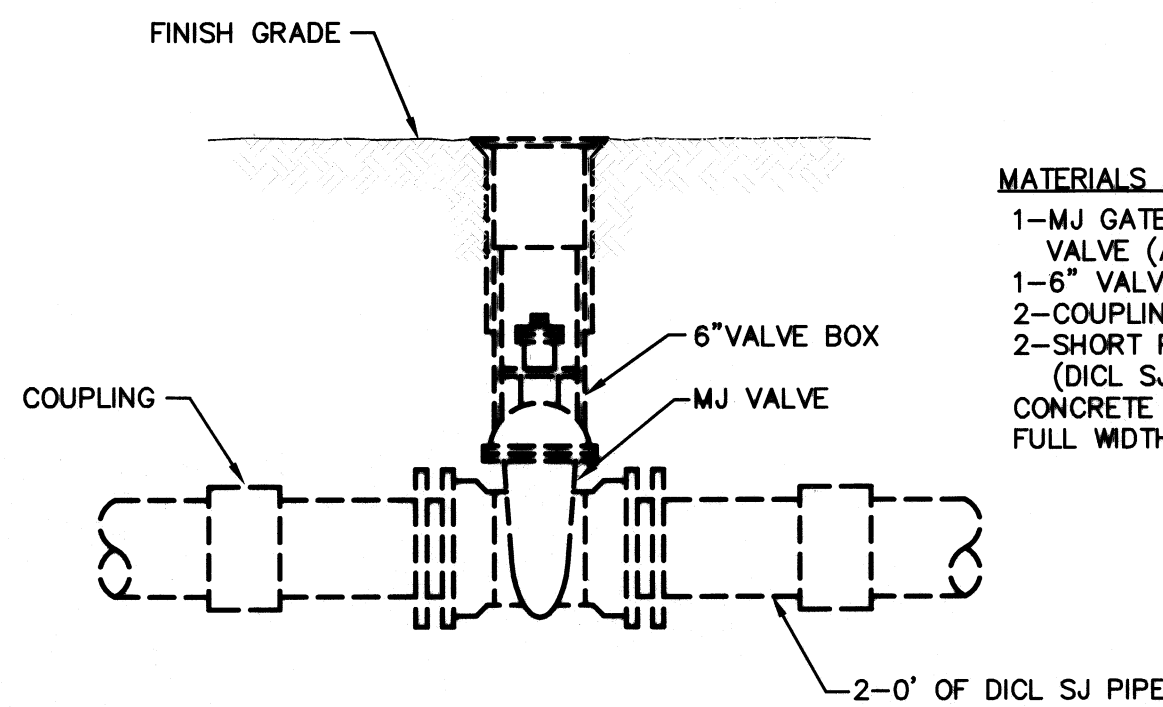
Benchmark: City of Wichita Std Disc
SW Cor. of Hubguard
100± East of Oliver on 37th St. N.
Elevation = 1374.24 NGVD



PLAN & PROFILE FOR
8' FIRE HYDRANT LINE
ADVANCED ANESTHESIA, WICHITA, SEDGWICK COUNTY, KS
CED PROJ. NO.: 20061357

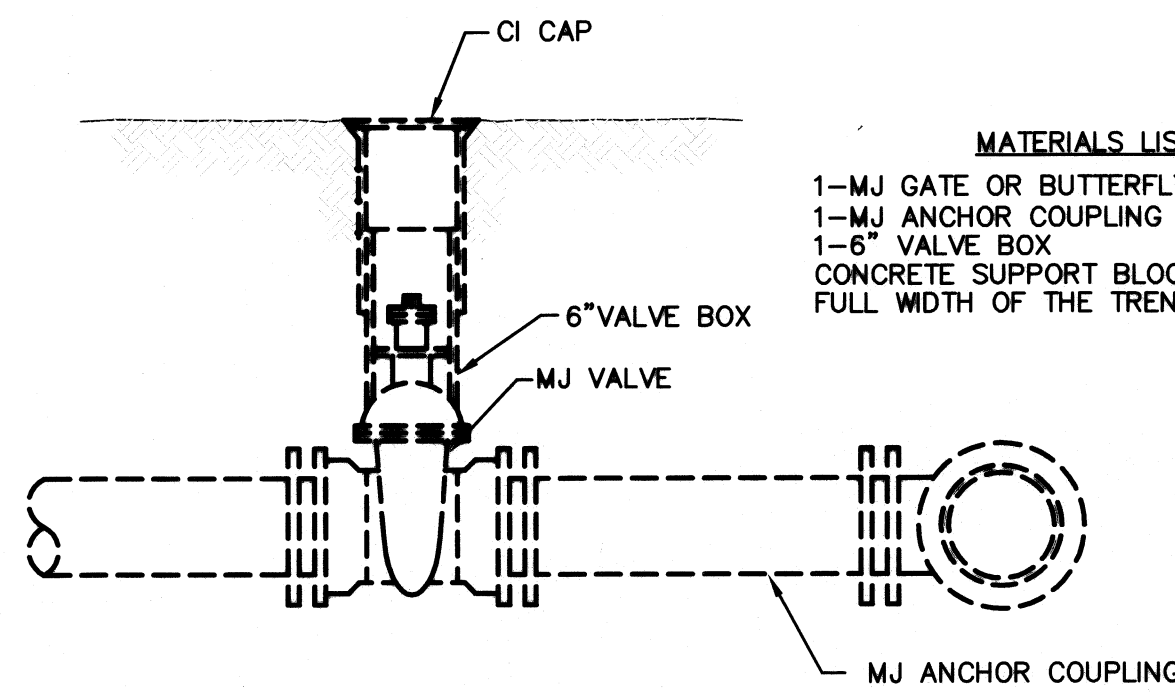
CERTIFIED ENGINEERING DESIGN, P.A.
810 WEST DOUGLAS, SUITE C
WICHITA, KANSAS 67203
PH.(316)262-8808 FAX.(316)262-1669

DESIGNED: HDF	SCALE: 1"=20'	SHEET
DRAWN: JDT	DATE: 06-08	4
CHECKED: HDF	CED FILE: Advanced Anesthesia	TOTAL 5



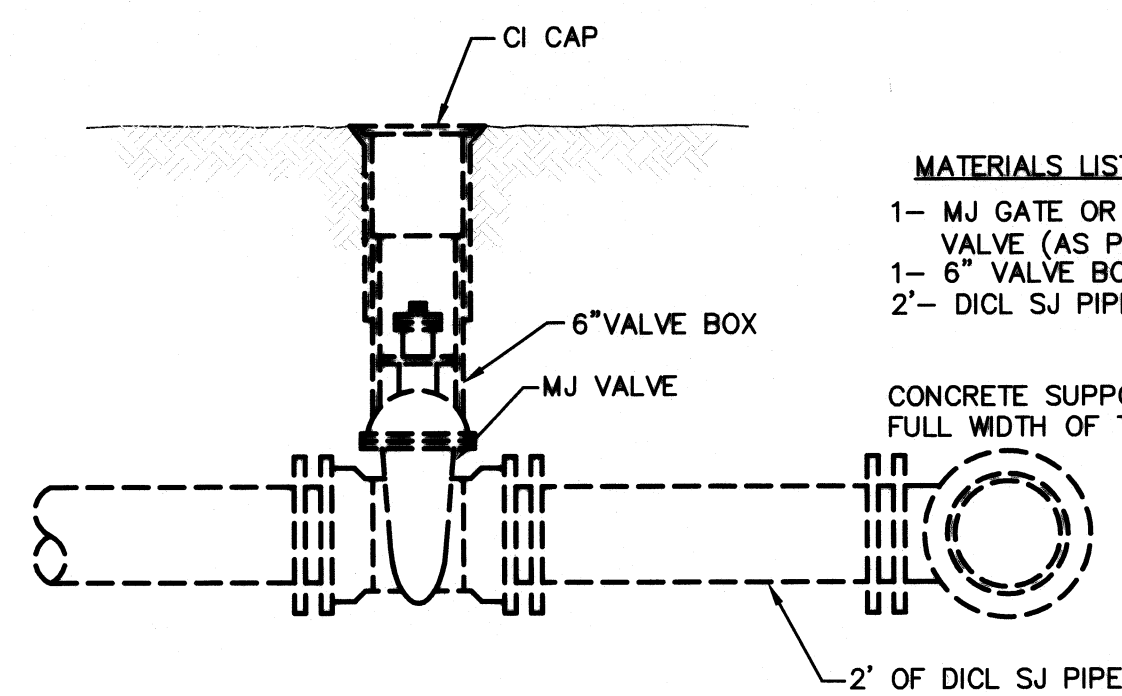
- MATERIALS LIST**
- 1-MJ GATE OR BUTTERFLY VALVE (AS PER PLAN)
 - 1-6" VALVE BOX
 - 2-COUPPLINGS
 - 2-SHORT PGS. (D.I.C.L. S.J. PIPE)
 - CONCRETE SUPPORT BLOCK SHALL BE FULL WIDTH OF THE TRENCH

LINE VALVE ASSEMBLY



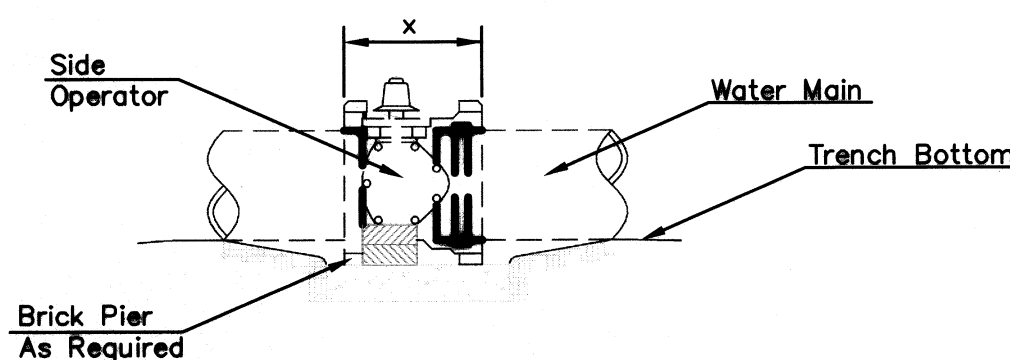
- MATERIALS LIST**
- 1-MJ GATE OR BUTTERFLY VALVE (AS PER PLAN)
 - 1-MJ ANCHOR COUPLING (12" OR SMALLER)
 - 1-6" VALVE BOX
 - CONCRETE SUPPORT BLOCK SHALL BE FULL WIDTH OF THE TRENCH

ANCHORED VALVE ASSEMBLY



- MATERIALS LIST**
- 1-MJ GATE OR BUTTERFLY VALVE (AS PER PLAN)
 - 1-6" VALVE BOX
 - 2-D.I.C.L. S.J. PIPE
 - CONCRETE SUPPORT BLOCK SHALL BE FULL WIDTH OF THE TRENCH

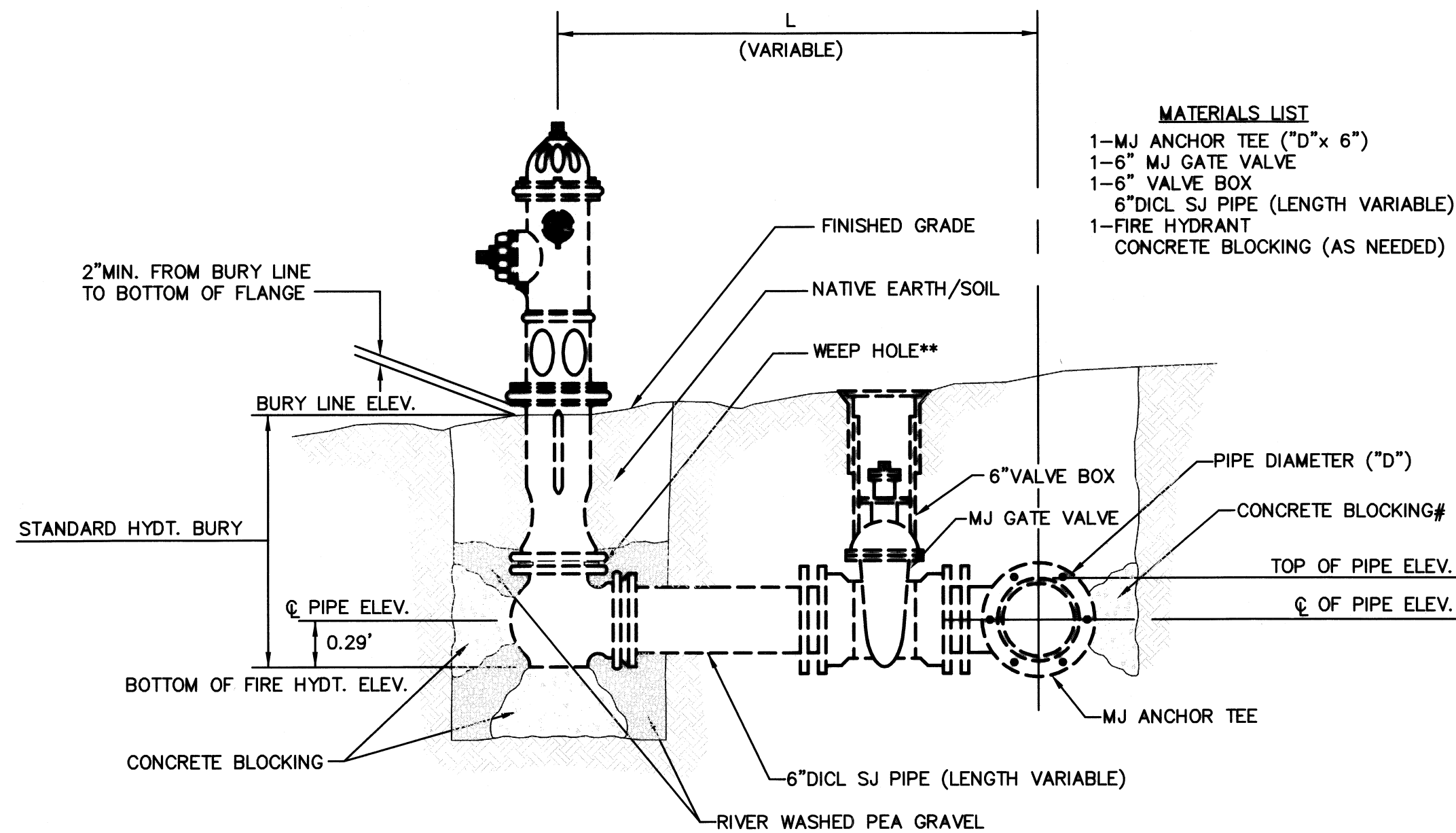
VALVE ASSEMBLY



NOTES

- This detail covers Butterfly Valve installation, inclusive, regardless of type of pipe or joint used. Larger lines to be detailed on plans.
- 6" Valve Box and Cover required per City of Wichita Std. Specifications.
- Conc. Support Block to be full width of trench.

CONCRETE SUPPORT BLOCKING FOR BUTTERFLY VALVE INSTALLATION



- MATERIALS LIST**
- 1-MJ ANCHOR TEE ("D"x 6")
 - 1-6" MJ GATE VALVE
 - 1-6" VALVE BOX
 - 6"D.I.C.L. S.J. PIPE (LENGTH VARIABLE)
 - 1-FIRE HYDRANT
 - CONCRETE BLOCKING (AS NEEDED)

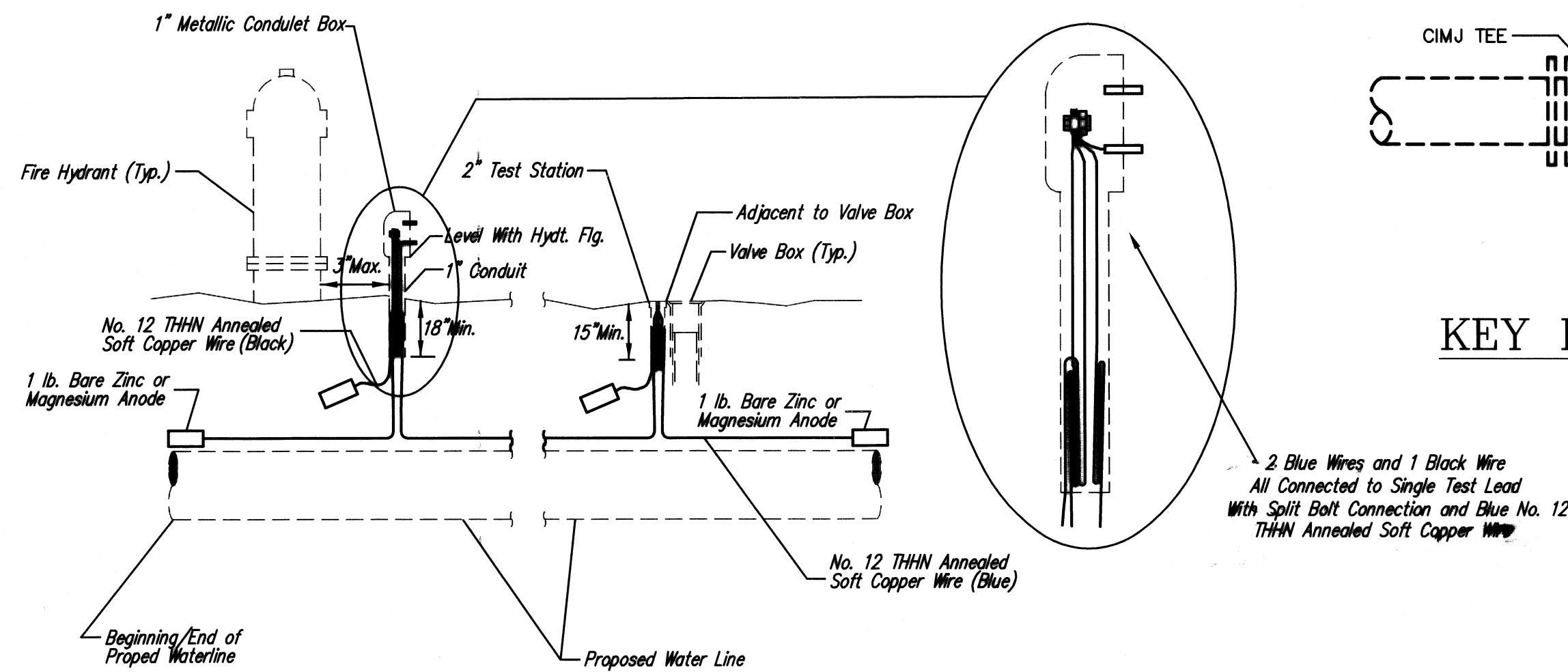
** CAUTION! WEEP HOLES TO BE KEPT CLEAR DURING CONSTRUCTION AND BACKFILL. CONCRETE FOR THRUST BLOCKING SHALL NOT OBSTRUCT WEEP HOLES.

CONCRETE THRUST BLOCKING SHALL BE KEPT CLEAR OF BOLTS, NUTS, AND MJ ACCESSORIES.

* IF HYDRANT BURY IS IN EXCESS OF 5', CONTRACTOR SHALL USE STANDARD 5' HYDRANT BURY AND HYDRANT BARREL EXTENSIONS AS NECESSARY.

FIRE HYDRANTS REQUIRED			
STATION	BURY LINE ELEVATION	TOP OF PIPE ELEVATION	FIRE HYDRANT BURY REQUIRED*
Sta. 10+88.64	1370.50	1366.00	4.5'

FIRE HYDRANT ASSEMBLY
PER CITY OF WICHITA SPECIFICATIONS



TRACER WIRE

Conductive type pipe locator/tracer wire shall be installed to locate all waterline pipe regardless of pipe material. The wire shall extend the entire length of the proposed pipe. The wire shall be taped to the waterline and pulled with the pipe. Split-bolt connectors shall be used at splice locations. Electrical tape shall cover all splices so no bare wire is exposed. Test stations shall be installed adjacent to all fire hydrants along the waterline and at blowoffs or valves near the ends of the waterlines. Any exceptions to the location of test stations shall be approved by the engineer. At each test station, the tracer wire shall be connected to a 1 lb. Zinc or magnesium anode. Anodes shall also be attached to the tracer wire at both the beginning and the end of the proposed waterline. A typical layout of the tracer wire and test station is provided in the above figure.

WIRE

The tracer wire shall be Blue No. 12 THHN annealed soft copper wire with thermal plastic insulation. The insulation shall be heat, oil, and gasoline resistant as manufactured by Temple Electric or approved equal. To allow for grade adjustment, a minimum of 12" of excess wire shall be coiled at the bottom of the test station for all wires. The insulation sheathing shall be removed such that 1" bare copper wire is exposed at all points of connection. Contractor shall attach wire being installed with proposed water main to any tracer wire installed with adjacent waterline projects.

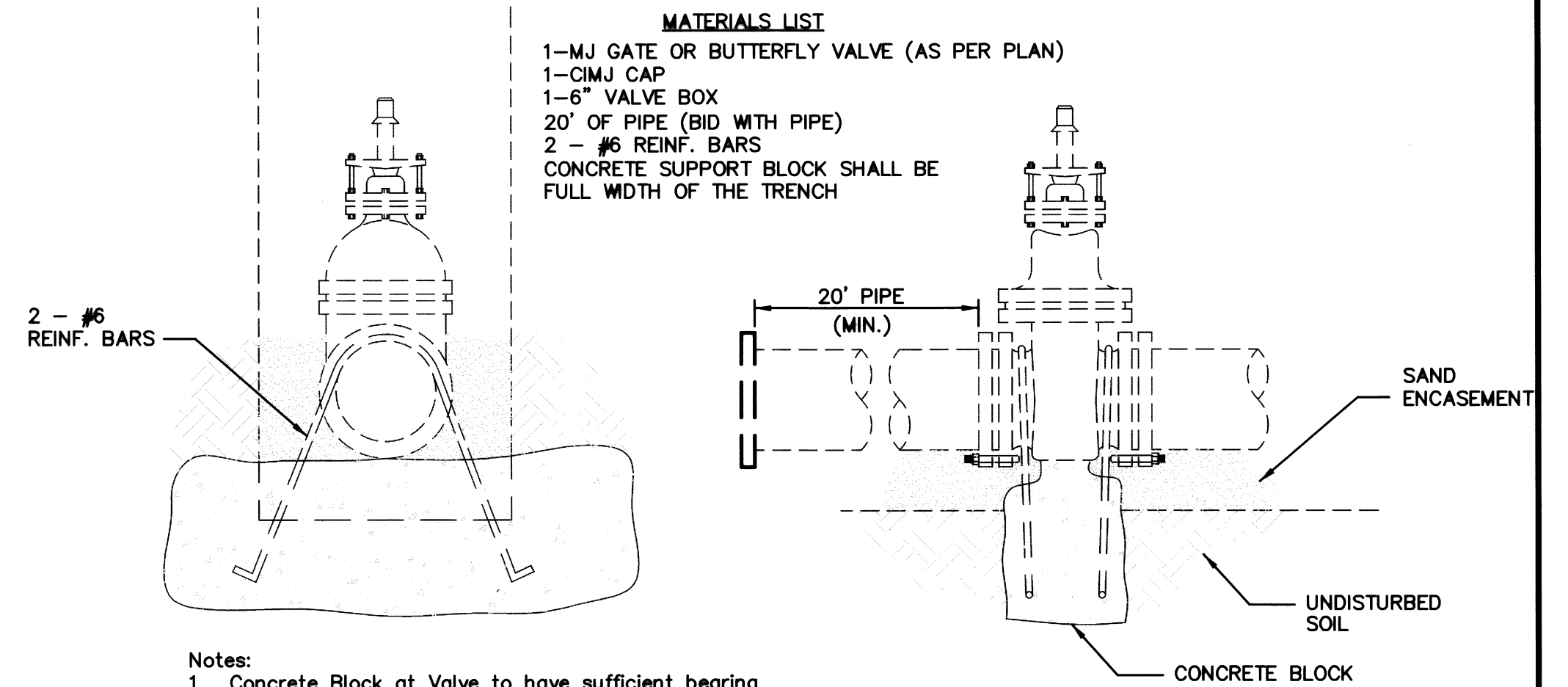
TEST STATIONS

The test station for fire hydrant applications shall be a 1 inch galvanized conduit style test station as manufactured by AGRA Industries with a removable solid cover having two leads extending from the face or approved equal. The test station for valve applications shall be 2 inch flush style test station T2PS3B as manufactured by HANDLEY Industries or approved equal. The conduit style shall be attached to a 1 inch rigid galvanized conduit with a minimum length of 36" and plastic end bushing. The flush style shall have the word "WATER" stamped or molded into the lid. All test stations shall be manufactured using molded blue tops or sufficiently coated with blue enamel paint. The tracer wire and the anode wire shall be installed to allow 10 inches of wire within the test station. In concrete environments such as sidewalks or in the downtown area the contractor shall use the flush style test station. The location of all test stations shall be approved by the engineer, recorded, and shown in the as-built drawings.

ANODES

The anodes shall be 1 lb. bare zinc or magnesium. The anodes shall be buried at the same elevation as the waterline at each test station. The anodes shall be connected to Black No. 12 THHN annealed soft copper wire which shall be extended to the test station.

TRACER WIRE DETAIL
COST IS SUBSIDIARY TO PIPE INSTALLATION

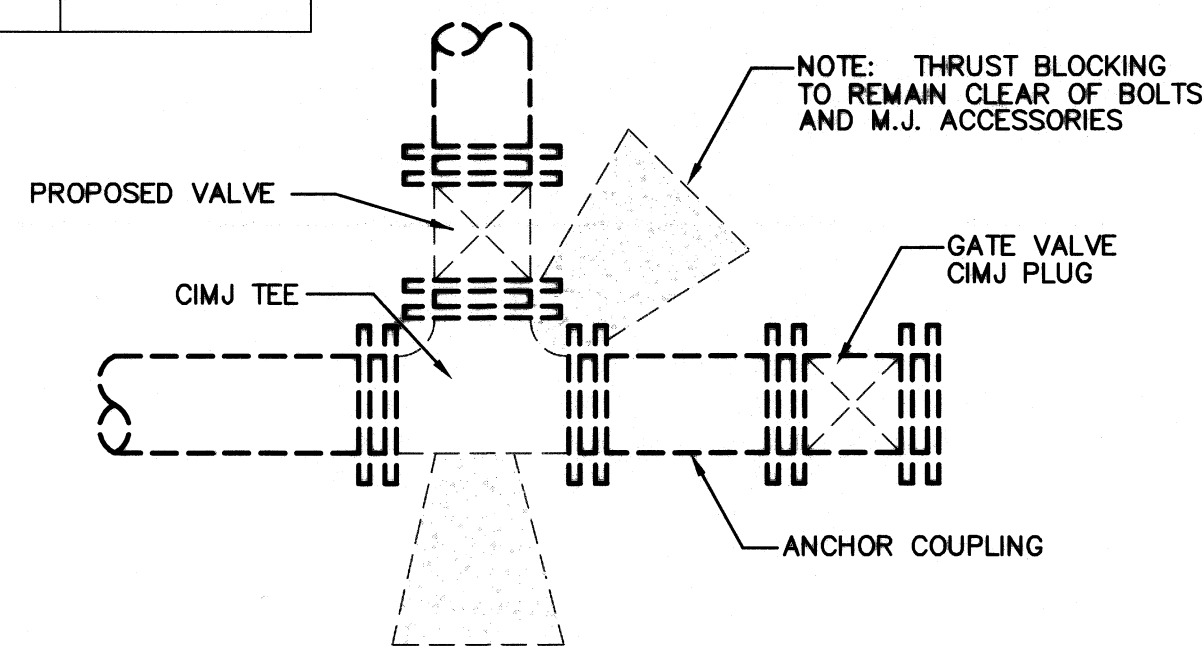


- MATERIALS LIST**
- 1-MJ GATE OR BUTTERFLY VALVE (AS PER PLAN)
 - 1-CIMJ CAP
 - 1-6" VALVE BOX
 - 20' OF PIPE (BID WITH PIPE)
 - 2 - #6 REINF. BARS
 - CONCRETE SUPPORT BLOCK SHALL BE FULL WIDTH OF THE TRENCH

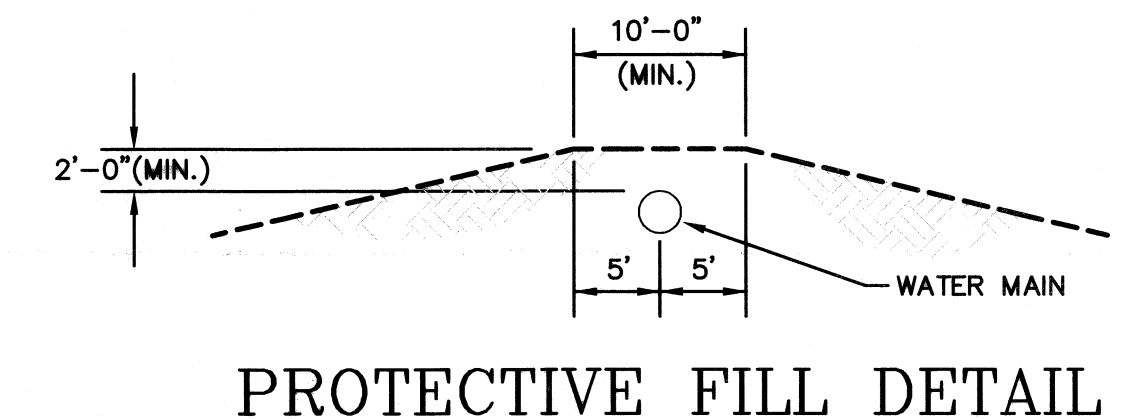
- Notes:**
- Concrete Block at Valve to have sufficient bearing in undisturbed soil to prevent thrust movement as shown in table at right. Field Engineer to determine thrust loading of undisturbed soil and final size of thrust block.
 - The thrust block shall be constructed such that bolts, nuts, and other MJ accessories are kept clear of concrete.
 - All valves at dead ends and at other locations as called out on the plans shall be blocked as shown here.

THRUST AT VALVES	
VALVE	THRUST AT 150 #/sq. in.
4"	1809 lbs.
6"	4245 lbs.
8"	7540 lbs.
12"	16965 lbs.

ANCHORED VALVE ASSEMBLY, SPECIAL

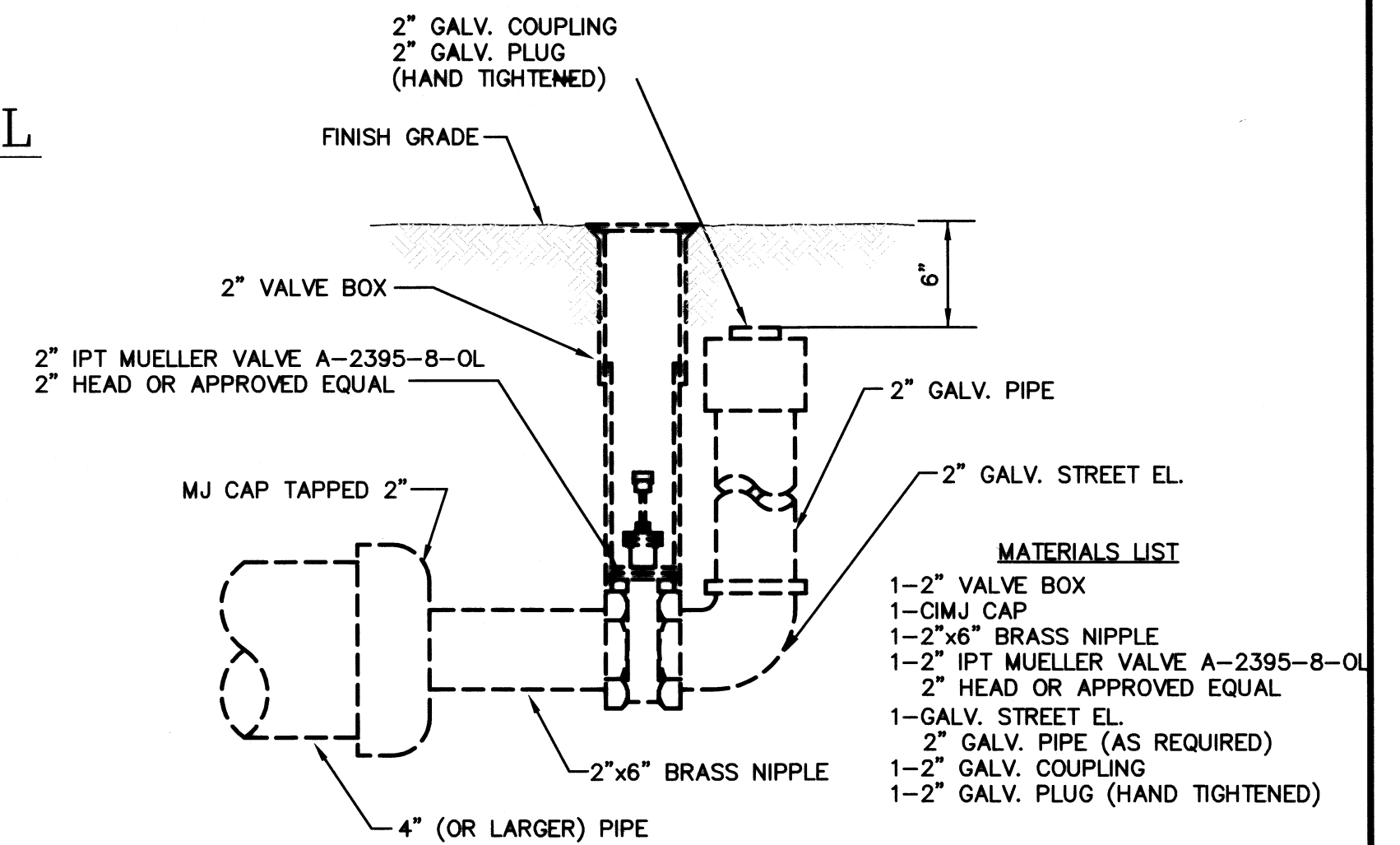


KEY BLOCK DETAIL



PROTECTIVE FILL DETAIL

MINIMUM PROTECTIVE FILL SHALL BE PROVIDED IN ALL INSTANCES WHERE COVER OVER THE PROP. WATER LINE IS LESS THAN (2) FEET. (COST SUBSIDIARY TO PIPE INSTALLATION)



- MATERIALS LIST**
- 1-2" VALVE BOX
 - 1-CIMJ CAP
 - 1-2"x6" BRASS NIPPLE
 - 1-2" IPT MUELLER VALVE A-2395-8-OL
 - 2" HEAD OR APPROVED EQUAL
 - 1-GALV. STREET EL.
 - 2" GALV. PIPE (AS REQUIRED)
 - 1-2" GALV. COUPLING
 - 1-2" GALV. PLUG (HAND TIGHTENED)

2" BLOWOFF ASSEMBLY

<p>THE CITY OF WICHITA CITY ENGINEER'S OFFICE CITY HALL, SECOND FLOOR 100 N. GARDNER STREET WICHITA, KANSAS 67202 (316) 266-4114 FAX</p>	<p>STANDARD WATER ASSEMBLY DETAILS</p>	
	<p>M. E. LINDEBAK P.E. - CITY ENGINEER</p>	
	<p>PROJECT NUMBER PPW</p>	<p>INDEX CODE 607853</p>
	<p>DATE JAN 01</p>	<p>SHEET 5 OF 5</p>

Revised: 6-7-00, MCG