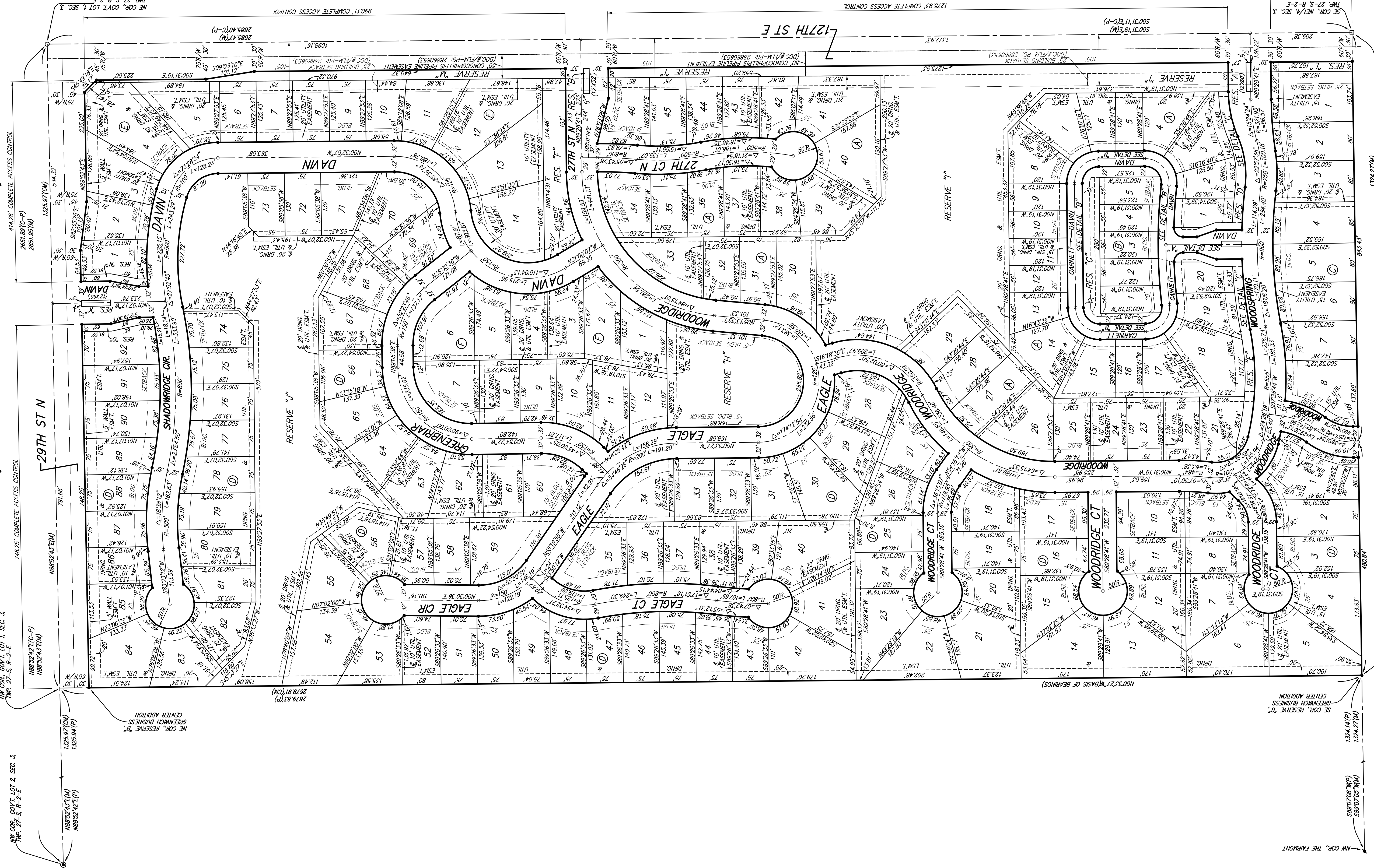


# WOODS NORTH ADDITION WICHITA, SEDGWICK COUNTY, KANSAS



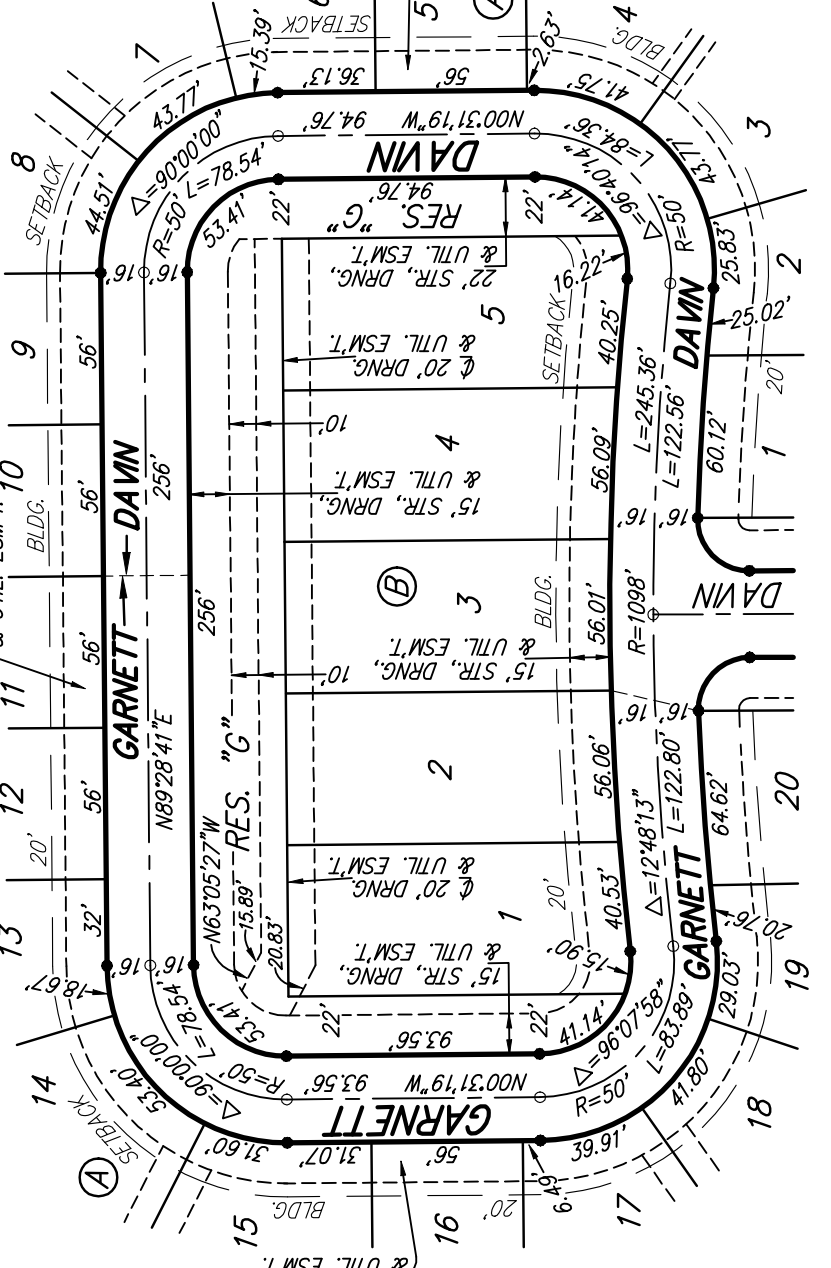
- = #4 REBAR W/ "BAUGHMAN" CAP (SET)
- = #4 REBAR W/ "BAUGHMAN" CAP (FOUND)
- = #4 REBAR W/ "BAUGHMAN" CAP (FOUND)
- = 3/8" IRON (FOUND)
- = MAG NAIL IN WALKER OVER STONE (FOUND)

- (M) = MEASURED
- (P) = PLATTED
- (CM) = MEASURED INFO
- (C-P) = PLATTED INFO

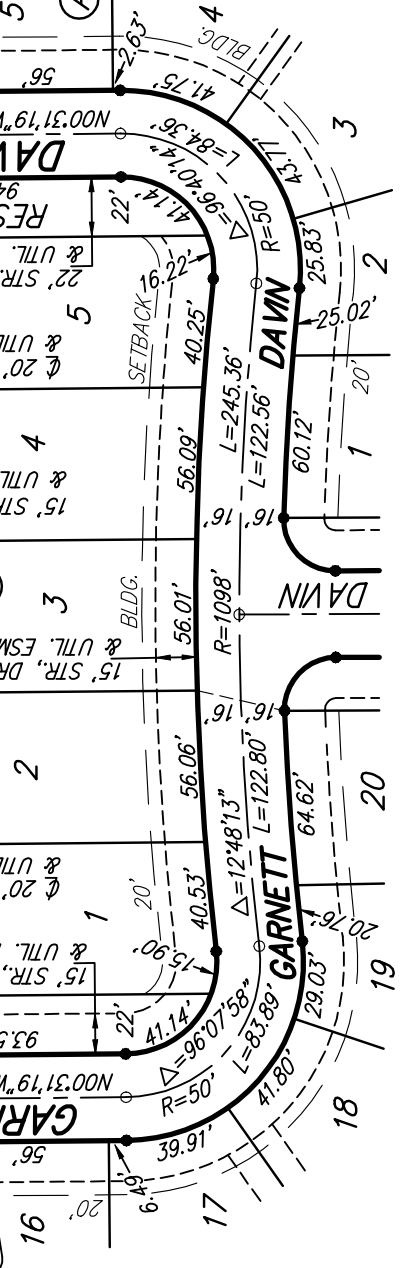
MINIMUM BUILDING PAD ELEVATIONS FOR LOWEST OPENING TO THE STRUCTURES			
LOT	BLOCK	MINIMUM ELEVATION	REMARKS
3-7	A	1380.0	
8-14	A	1380.0	
28-30	A	1380.0	
39-41	A	1380.0	
54-57	D	1380.0	
63-68	D	1380.0	
70-83	D	1380.0	

BENCHMARK:  
CROSS OUT ON NORTH END OF WEST HEADWALL  
127.5 SOUTH A 12 WEST OF THE INTERSECTION  
ELEV. = 1382.45 MANSION

DETAIL "A"  
(NO SCALE)



DETAIL "B"  
(NO SCALE)



DETAIL "C"  
(NO SCALE)

