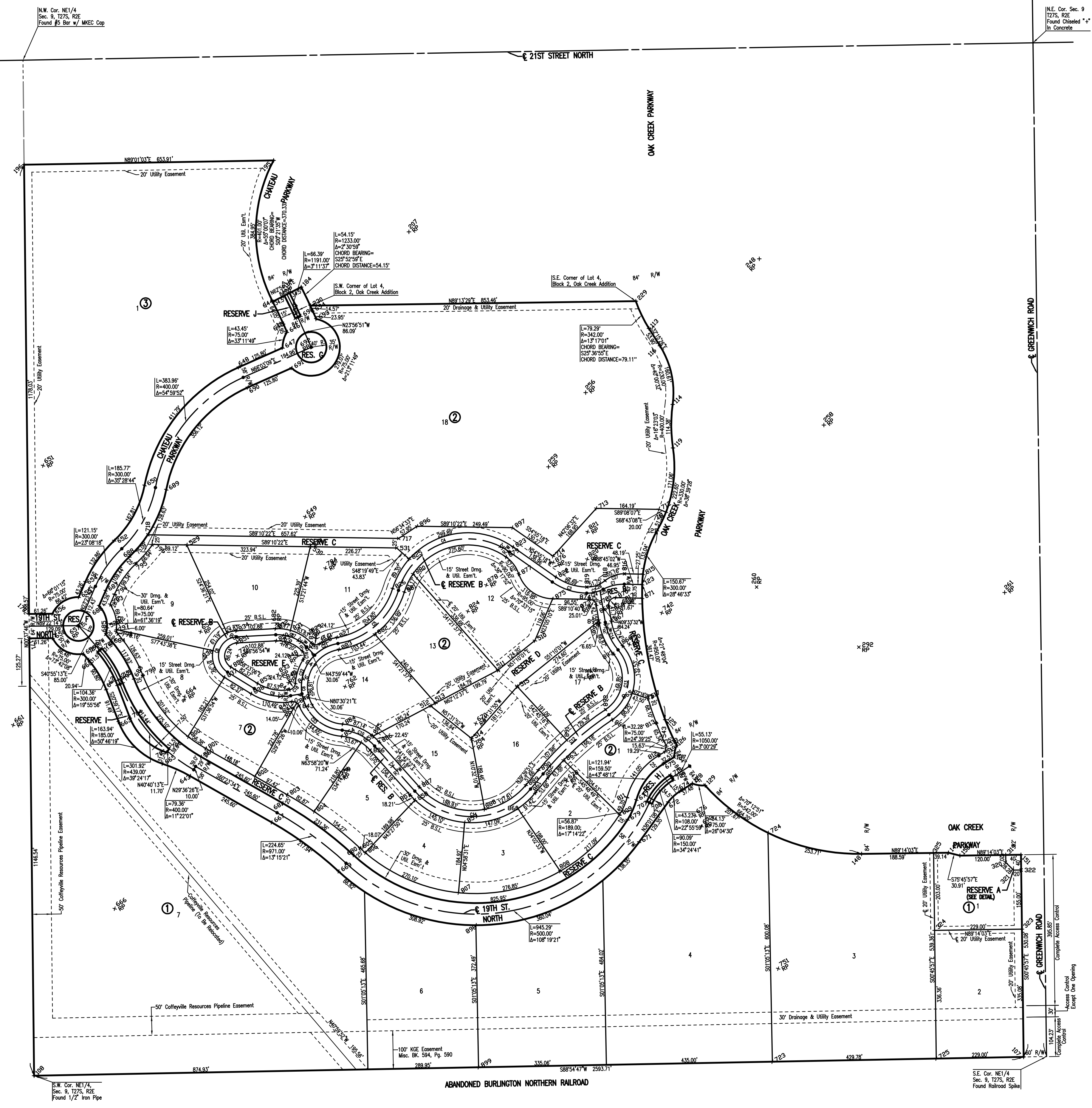


OAK CREEK 2ND

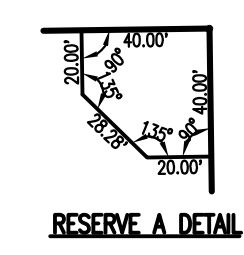
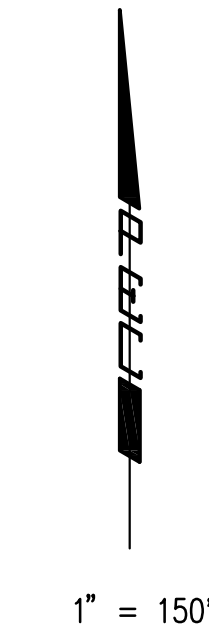
AN ADDITION TO WICHITA, SEDGWICK COUNTY, KANSAS



COORDINATE LIST		
POINT	NORTH	EAST
107	384637.858800	2374056.388855
108	384588.657000	2371463.142000
113	386547.779420	2373074.354833
114	386348.421542	2373136.517208
116	386502.200164	2373103.121146
119	386234.430334	2373137.393217
121	386019.773012	2373096.847274
123	385876.199490	2373056.660103
125	385521.987165	2373116.896110
126	385455.247940	2373147.211813
127	385423.915499	2373140.575936
128	385354.616204	2373188.097969
129	385349.641854	2373221.568572
148	385170.305777	2373631.645838
149	385173.348815	2373585.357053
150	385165.749814	2373389.177726
151	385167.888300	2374049.303432
170	385799.127471	2371449.841656
171	385735.131334	2371450.544829
184	386656.287177	2372163.136446
195	386988.294512	2372090.710556
196	386977.082987	2371436.898577
207	386800.898554	2372445.229604
229	386619.116678	2373040.152258
230	386607.569274	2372186.774853
248	386730.311638	2373363.570997
256	386379.444579	2372908.619048
258	386294.468436	2373532.861833
259	386184.898899	2372811.131609
260	385869.658569	2373356.588788
261	385855.486575	2374006.434273
292	385712.257355	2373624.401041
319	385167.353628	2374009.307006
320	385147.355415	2374009.574341
321	385127.624537	2374029.839890
322	385127.891873	2374049.838103
323	384972.905721	2374051.909955
324	384969.844727	2373822.930414
325	385172.826591	2373820.216956
510	385729.493476	2372775.401960
511	385651.610748	2372678.649760
512	385558.463247	2372501.903495
513	385565.456882	2372515.173455
514	385473.277134	2372609.116212
515	385608.869336	2372729.212367
517	385577.758570	2373071.826251
518	385453.483247	2373119.896372
519	385438.232780	2373113.635439
529	385972.283255	2372443.245545
530	385975.549640	2372186.999321
531	385972.283255	2372443.245545
543	385466.045715	2373113.647844
560	385424.734166	2371900.617478
643	385374.307061	2371871.962512
644	386617.967444	2372088.386208
645	386560.188891	2372116.000255
646	386538.299894	2372125.721898
647	386496.988575	2372114.344337
648	386445.927027	2371999.375490
649	386053.856680	2372173.507174
650	386136.114167	2371752.467145
651	386188.076356	2371486.495472
652	385991.391651	2371672.925423
653	385752.612064	2371899.255512
654	385883.426721	2371597.302558
655	385843.542938	2371580.125421
656	385799.800557	2371511.089531
657	385768.547750	2371555.277605
658	385735.804420	2371511.802704
659	385694.595424	2371591.769836
660	385678.774561	2371605.484079
661	385507.817561	2371408.266675
662	385601.300677	2371651.950706
663	385515.877419	2371684.721144
664	385582.139398	2371857.447373
665	385406.435103	2371799.542272
666	385026.533924	2371674.342055
667	385252.969968	2372085.491931
668	384433.964231	2371620.095753
669	385124.432671	2372260.890052
670	385512.179810	2372620.741627
671	385201.099644	2373048.608580
672	385305.719477	2373124.672307
673	385242.209727	2373212.025107
674	385334.737211	2373156.323538
675	385406.703032	2373113.000996
676	385270.053646	2373195.263061

COORDINATE LIST		
POINT	NORTH	EAST
677	385311.735106	2373041.305580
678	385361.125676	2372858.873205
679	385259.887267	2373018.472028
680	385166.945590	2372300.344478
681	385303.397073	2372114.146897
682	385772.507303	2372098.237936
683	385629.238160	2371724.775819
684	385729.865158	2371664.422613
685	385745.686022	2371650.708370
686	385820.513141	2371633.357248
687	385860.218903	2371650.534386
688	385949.296769	2371712.825561
689	386124.993108	2371809.390972
690	386392.919847	2372022.917769
691	386443.981395	2372137.886618
692	386498.559747	2372139.327878
693	386572.395609	2372202.490816
694	386594.284605	2372192.769274
695	386093.808227	2371065.909746
696	386640.548715	2372132.435455
697	386633.705906	2372119.087199
698	38680.281008	2372161.239141
699	386574.192488	2372147.530388
700	385709.232417	2371640.620513
701	385699.407302	2371629.286179
702	385612.583122	2371681.360848
703	385617.955715	2371695.365677
704	385527.159864	2371714.131286
705	385436.352321	2371809.401789
706	385445.226658	2371817.026931
707	385307.625555	2373068.752571
708	385301.395476	2373082.397575
709	385364.294601	2373138.529982
710	385377.145641	2373130.793653
711	386066.271337	2373119.072352
712	386073.530227	2373100.435979
713	386076.007974	2372936.261592
714	385950.666563	2372822.971379
717	385997.209479	2372418.536104
718	386006.702740	2371760.985202
723	384625.361974	2373397.726869
724	385225.357716	2373396.343396
725	384633.514866	2373827.426466
730	385719.393632	2373023.135663
742	385802.066425	2373107.922513
746	385630.902853	2372905.615737
751	384869.389928	2373412.885946
754	385467.909995	2372610.114422
759	385369.781623	2372262.237062
762	385608.765666	2372277.949391
770	385689.269256	2371996.338075
784	385919.036661	2372226.547447
792	385758.355848	2371678.756964
793	385824.353380	2371662.288003
794	385850.290258	2371673.479139
795	385931.152424	2371730.023896
796	385981.512525	2371773.980052
797	385752.408123	2371677.966663
798	385746.240350	2371683.313169
799	385638.192481	2371748.117201
800	385477.411103	2371866.843829
801	385446.469987	2371912.968757
802	385373.263775	2372041.797292
803	385325.132894	2372126.498175
804	385281.325235	2372196.814341
805	385185.270214	2372317.350696
806	385173.247441	2372330.841749
807	385068.498376	2372466.304021
808	385124.860751	2372784.874950
809	385273.278591	2372997.361073
811	385318.268250	2373017.174313
812	385428.121431	2373100.106214
813	385513.210865	2373093.487211
815	385903.415972	2373058.494109
816	385904.466559	2373010.320322
817	385827.484863	2373008.641486
818	385886.645633	2372959.356567
819	385869.740633	2372911.584405
820	385942.733117	2372912.631903
821	386014.725704	2372913.665051
822	385896.062673	2372830.333874
823	385974.772277	2372718.251933
824	385806.188937	2372599.864191
825	385943.145088	2372445.984326
826	385865.795684	2372402.876372
827	385737.510864	2372256.620445
828	385720.906491	2372211.205962

CURVE TABLE			
CURVE	LENGTH	RADIUS	DELTA
C1	57.50'	113.44'	299.94°
C2	44.84'	89.00'	284.46°
C3	96.26'	161.00'	341.52°
C4	309.00'	190.00'	108.15°
C5	222.61'	200.00'	63.46°
C6	333.40'	114.50'	168.93°
C7	89.90'	105.00'	49.03°
C8	126.83'	50.00'	145.20°
C9	99.01'	138.00'	41.96°
C10	97.15'	125.00'	44.33°
C11	344.28'	200.00'	98.37°
C12	232.72'	80.00'	164.01°
C13	193.82'	115.00'	98.33°
C14	80.31'	150.00'	30.40°
C15	24.12'	18.00'	78.45°
C16	24.12'	18.00'	78.45°
C17	24.12'	18.00'	78.45°
C18	24.12'	18.00'	78.45°
C19	31.67'	18.00'	107.48°
C20	25.01'	18.00'	79.37°
C21	89.12'	114.50'	34.35°
C22	110.81'	114.50'	50.29°
C23	153.37'	114.50'	78.44°
C24	35.50'	88.00'	223.19°
C25	8.14'	88.00'	93.23°
C26	51.75'	73.00'	40.37°
C27	55.16'	77.00'	41.02°



Scaled 08-25-2008 11:42:22 PM by JAT
 Plot Scale 1:150 08-25-2008 2:15:44 PM
 J:\SENTOUT\2008\08397\2008-08-25 to City of Wichita\DWG\03-OAK CREEK 2ND PLAT

No.	Revision	By	Date
OAK CREEK 3RD AND 4TH ADDITIONS STORM WATER DRAIN NO. 350			
PLAT JAMES L. ARMOUR, P.E. - CITY ENGINEER CITY OF WICHITA PROJECT NO. 468-84534			
Professional Engineering Consultants, P.A. 303 S. TOPKA • WICHITA, KANSAS 67202 316-262-2691 • FAX 316-262-3003			
Designed by	BER	Job No.	35-08397-000
Drawn by	BJS	Date	March 2007
			Sheet 3 of 19

