

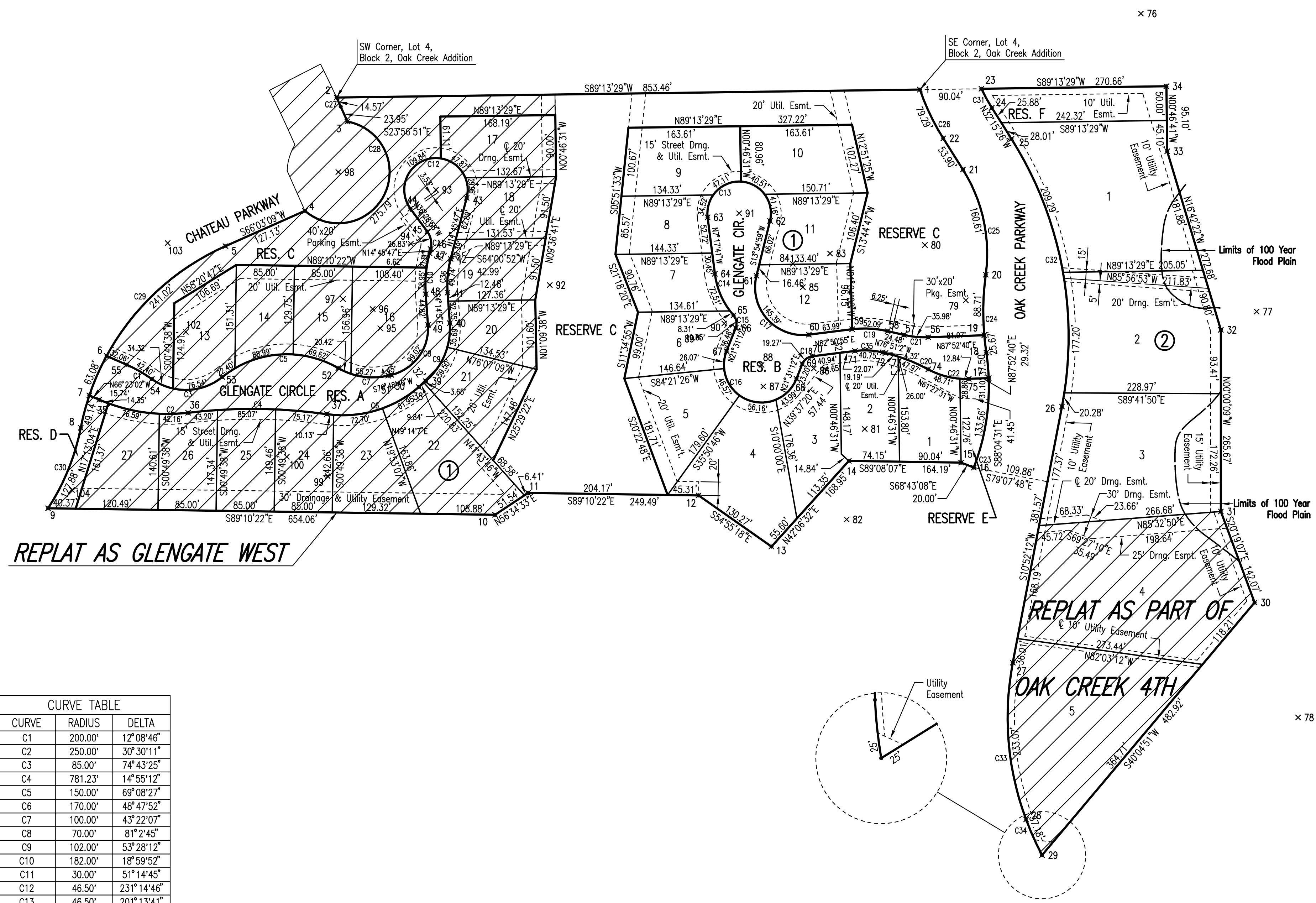
OAK CREEK 3RD

AN ADDITION TO WICHITA, SEDGWICK COUNTY, KANSAS



SCALE: 1" = 100'

• = 1/2" REBAR W/PEC CAP UNLESS OTHERWISE NOTED



COORDINATE LIST					
POINT	NORTH	EAST	POINT	NORTH	EAST
1	386619.116678	2373040.152258	53	386198.674611	2372019.449195
2	386607.569274	2372186.774853	54	386195.794914	2371916.325663
3	386572.395609	2372202.490916	55	386216.755173	2371879.562183
4	386441.781845	2372140.325125	56	386256.884237	2373052.447660
5	386390.178096	2372024.135473	57	386260.331406	2373016.736951
6	386229.600196	2371850.183471	58	386265.900350	2372992.899257
7	386171.876396	2371824.945348	59	386268.611257	2372941.157299
8	386124.417881	2371812.335308	60	386260.645356	2372877.667261
9	386006.651413	2371764.540414	61	386346.936102	2372801.007531
10	385997.209479	2372418.536104	62	386426.993360	2372820.843871
11	386029.131555	2372466.904021	63	386432.272664	2372729.585165
12	386025.529991	2372716.366366	64	386349.777547	2372740.145253
13	385950.666563	2372822.971379	65	386288.866352	2372767.480504
14	386076.007974	2372936.261592	66	386270.444052	2372770.649965
15	386073.530227	2373100.435979	67	386236.523304	2372757.274547
16	386066.271337	2373119.072352	68	386196.172236	2372859.606317
17	386197.118845	2373140.905278	69	386217.759106	2372868.118318
18	386234.430334	2373137.393217	70	386229.016211	2372882.622694
19	386259.919421	2373134.356669	71	386236.860193	2372945.141008
20	386348.421542	2373136.517208	72	386234.739415	2372985.619410
21	386502.200164	2373103.121146	73	386233.756830	2372989.825334
22	386547.779420	2373074.354833	74	386209.929952	2373052.400359
23	386620.334945	2373130.184778	75	386196.033111	2373111.605104
24	386592.611895	2373145.390382	76	386730.311638	2373363.570997
25	386547.032639	2373174.156695	77	386294.468436	2373532.861833
26	386155.546307	2373248.083662	78	385700.672639	2373593.501294
27	385780.818955	2373176.126681	79	386310.954238	2373107.346638
28	385551.475534	2373195.550011	80	386391.791647	2373047.448591
29	385499.327831	2373218.907493	81	386122.754807	2372959.457462
30	385868.829826	2373529.844605	82	385990.311938	2372932.951926
31	386002.062906	2373480.510749	83	386379.444579	2372908.619048
32	386267.731295	2373480.499616	84	386364.379393	2372854.214469
33	386528.904472	2373402.113642	85	386330.100808	2372868.952898
34	386623.997055	2373400.822390	86	386211.156238	2372884.863530
35	386165.570258	2372183.368537	87	386184.898899	2372811.131609
36	386146.436828	2371969.497835	88	386216.347666	2372808.440391
37	386144.407951	2372172.349456	89	386257.756433	2372715.808272
38	386183.982118	2372307.108200	90	386277.046920	2372753.904753
39	386192.704920	2372317.226284	91	386438.177018	2372775.708788
40	386277.491426	2372352.346593	92	386333.268399	2372498.627264
41	386322.191488	2372349.036818	93	386472.572502	2372332.128727
42	386371.492180	2372353.579194	94	386393.694773	2372295.313445
43	386460.723061	2372377.093611	95	386269.959453	2372250.625058
44	386444.924487	2372294.741066	96	386298.152616	2372239.446307
45	386411.532203	2372319.434517	97	386312.739823	2372196.106157
46	386386.050061	2372324.323070	98	386498.559747	2372189.327878
47	386379.646765	2372322.635653	99	386053.856680	2372173.507174
48	386319.829157	2372317.124132	100	386082.039003	2372113.768520
49	386275.128482	2372320.433955	101	385370.845682	2372063.176501
50	386201.805938	2372266.596471	102	386264.768122	2371966.001578
51	386200.790322	2372262.262611	103	386394.632957	2371939.519821
52	386211.707171	2372189.175192			

CURVE	RADIUS	DELTA
C1	200.00'	12°08'46"
C2	250.00'	30°30'11"
C3	85.00'	74°43'25"
C4	781.23'	14°55'12"
C5	150.00'	69°08'27"
C6	170.00'	48°47'52"
C7	100.00'	43°22'07"
C8	70.00'	81°2'45"
C9	102.00'	53°28'12"
C10	182.00'	18°59'52"
C11	30.00'	51°14'45"
C12	46.50'	231°14'46"
C13	46.50'	201°13'41"
C14	115.00'	33°44'57"
C15	18.00'	62°33'50"
C16	55.00'	180°00'00"
C17	75.00'	111°04'04"
C18	18.00'	64°10'51"
C19	147.00'	20°18'03"
C20	250.00'	15°23'31"
C21	135.00'	15°16'18"
C22	115.00'	30°39'49"
C23	330.00'	29°42'02"
C24	400.00'	16°23'03"
C25	230.00'	40°00'32"
C26	342.00'	13°17'01"
C27	1233.00'	00°40'38"
C28	75.00'	149°18'43"
C29	368.00'	54°59'52"
C30	332.00'	22°04'12"
C31	258.00'	7°01'35"
C32	542.00'	43°07'37"
C33	425.00'	31°25'17"
C34	458.00'	7°09'10"
C35	115.00'	20°18'04"
C36	150.00'	18°59'53"

Scaled 08-25-2008 11:59:52 PM by TAT
 Plot Scale 1:100 08-25-2008 2:31:24 PM
 J:\SENTOUT\2008\08397\2008-08-25 to City of Wichita\DWG\CH-OAK CREEK 3RD PLAT

No.	Revision	By	Date
OAK CREEK 3RD AND 4TH ADDITIONS STORM WATER DRAIN NO. 350			
PLAT JAMES L. ARMOUR, P.E. - CITY ENGINEER CITY OF WICHITA PROJECT NO. 468-84534			
Professional Engineering Consultants, P.A. 303 S. TOPEKA • WICHITA, KANSAS 67202 316-262-2691 • FAX 316-262-3003			
Designed by	BER	Job No.	35-08397-000
Drawn by	BJS	Date	March 2007
			Sheet 4 of 19

