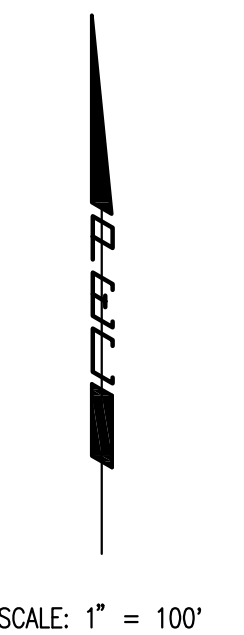


OAK CREEK 4TH

AN ADDITION TO WICHITA, SEDGWICK COUNTY, KANSAS



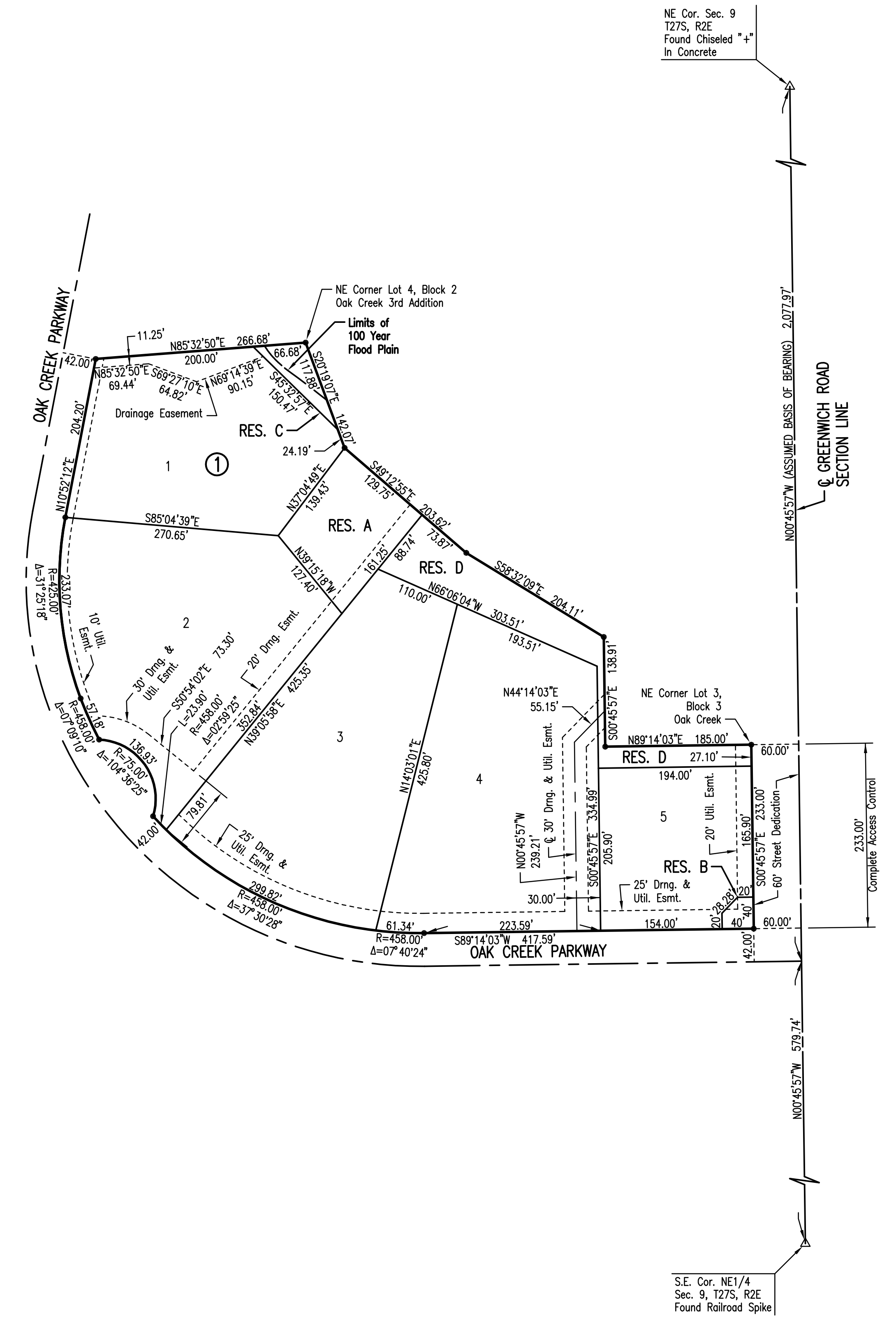
- = 1/2" REBAR W/PEC CAP UNLESS OTHERWISE NOTED
- △ = SECTION CORNER

BENCHMARKS *BM*

BM #206
 'T' Post 5' W of N gate post to field entrance, W side of Greenwich Road, 700' ± N of railroad tracks and 500' ± S of RCB culvert.
 Elev. = 1365.87 N.G.V.D.
 178.47 City Datum

BM #207
 Chiseled "d" on top of concrete headwall on NW corner of RCB under Greenwich Road, 1100' ± S of 21st Street North.
 Elev. = 1360.065 N.G.V.D.
 172.665 City Datum

MINIMUM PAD ELEVATIONS (LOWEST OPENING) SHALL BE AS FOLLOWS:		
BLOCK 1	CITY DATUM	N.G.V.D.
LOT 1	174.4	1361.8
LOT 2	173.8	1361.2
LOTS 3	173.4	1360.8
LOTS 4	173.4	1360.8
LOTS 5	173.1	1360.5



NE Cor. Sec. 9
 T27S, R2E
 Found Chiseled "+"
 In Concrete

S.E. Cor. NE1/4
 Sec. 9, T27S, R2E
 Found Railroad Spike

Sowed 08-25-2008 1:23:02 PM by TAT
 Plot Scale 1:100 08-25-2008 2:33:05 PM
 J:\SENTOUT\2008\08397\2008-08-25 to City of Wichita\DWG\05-oak-creek 4th PLAT

	Revision		
No.		By	Date
OAK CREEK 3RD AND 4TH ADDITIONS STORM WATER DRAIN NO. 350 PLAT JAMES L. ARMOUR, P.E. - CITY ENGINEER CITY OF WICHITA PROJECT NO. 468-84534 Professional Engineering Consultants, P.A. 303 S. TOPEKA • WICHITA, KANSAS 67202 316-262-2691 • FAX 316-262-3003			
Designed by	BER	Job No.	35-08397-000
Drawn by	BJS	Date	March 2007
			Sheet 5 of 19