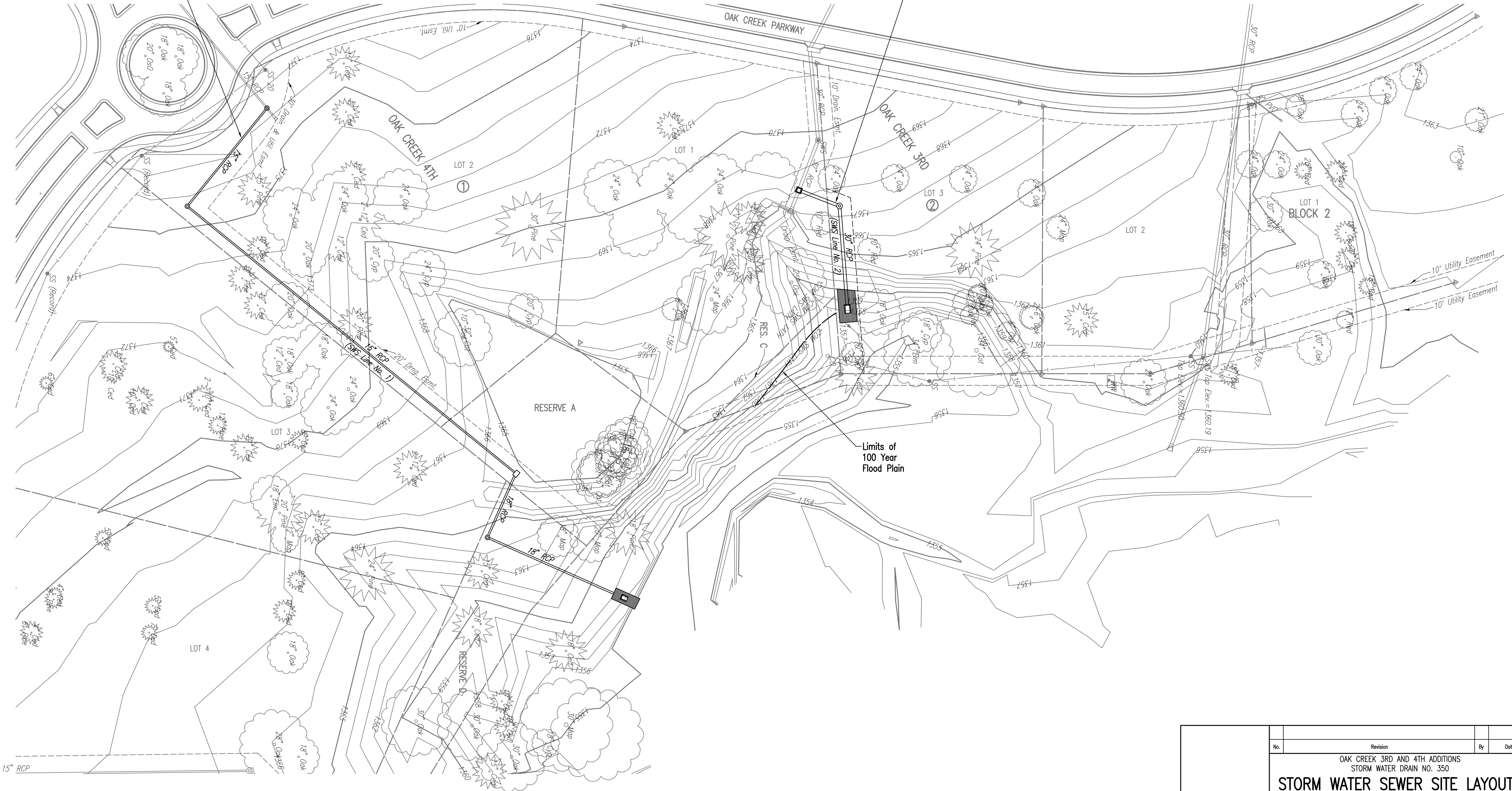
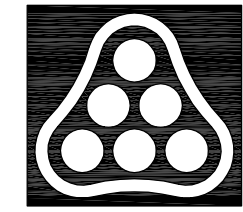


SWS LINE NO. 1 IMPROVEMENTS

SWS LINE NO. 2 IMPROVEMENTS



Sowed 08-25-2008 11:24:26 AM by TAT
 Plot Scale 1:40 08-25-2008 2:37:41 PM by TAT
 J:\SENTOUT\2008\06397\2008-08-25 to City of Wichita\DWG\06-39-SWS SITE LAYOUT



No.	Revision	By	Date
	OAK CREEK 3RD AND 4TH ADDITIONS STORM WATER DRAIN NO. 350		
STORM WATER SEWER SITE LAYOUTS			
JAMES L. ARMOUR, P.E. - CITY ENGINEER CITY OF WICHITA PROJECT NO. 468-84534			
Professional Engineering Consultants, P.A. 303 S. TOPEKA • WICHITA, KANSAS 67202 316-262-2691 • FAX 316-262-3003			
Designed by	BER	Job No.	35-08397-000
Drawn by	BJS	Date	March 2007
			Sheet 6 of 19