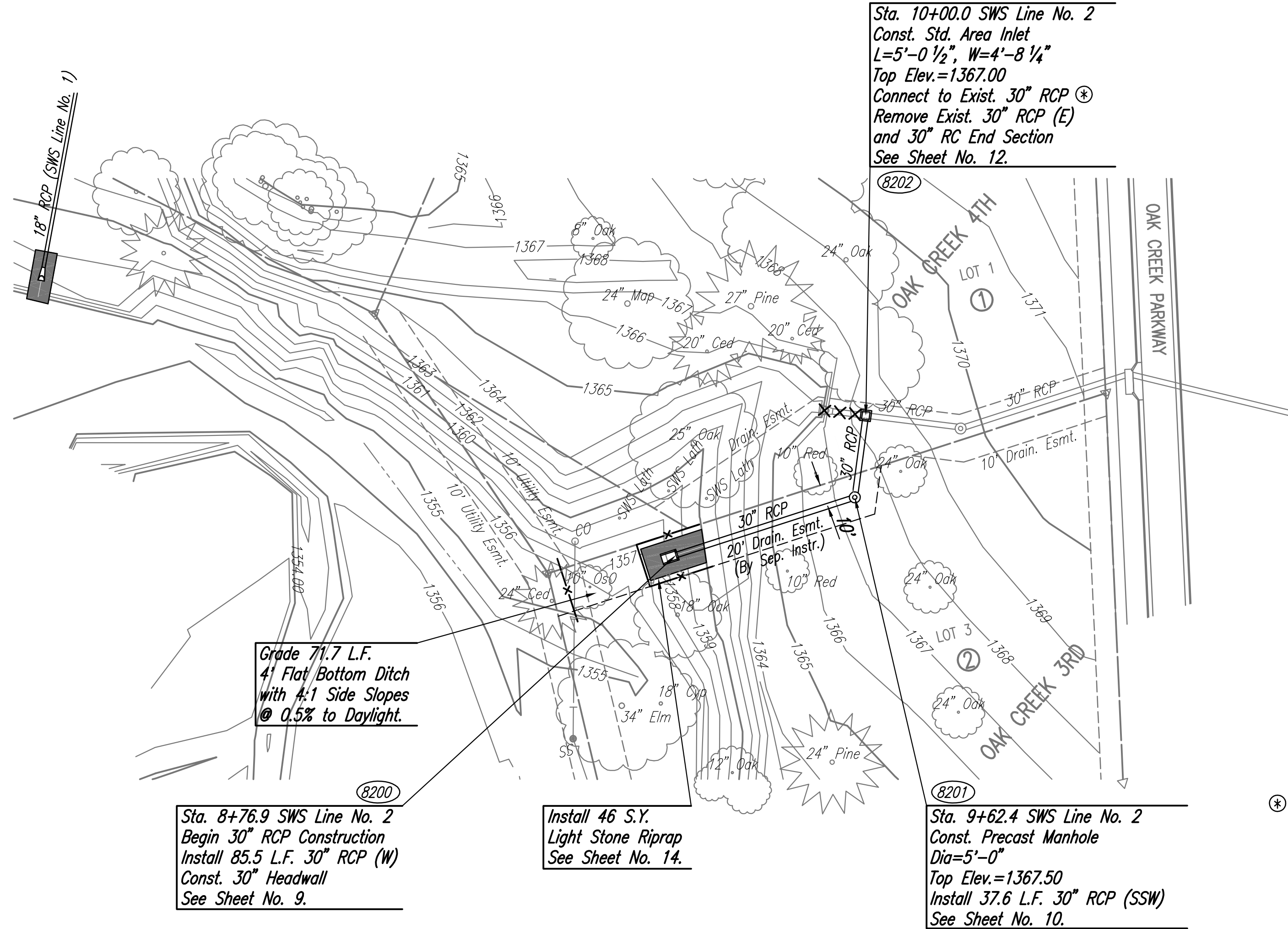


PLAN  
 CHECKED  
 CHECKED  
 BY  
 DATE

PROFILE  
 CHECKED  
 CHECKED  
 BY  
 DATE



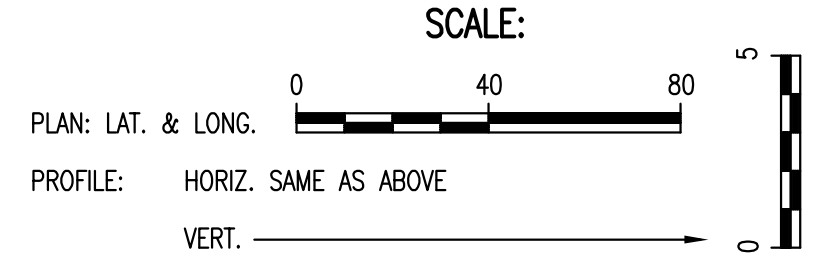
Sta. 10+00.0 SWS Line No. 2  
 Const. Std. Area Inlet  
 L=5'-0 1/2", W=4'-8 1/4"  
 Top Elev.=1367.00  
 Connect to Exist. 30" RCP  
 Remove Exist. 30" RCP (E)  
 and 30" RC End Section  
 See Sheet No. 12.

Grade 71.7 L.F.  
 4' Flat Bottom Ditch  
 with 4:1 Side Slopes  
 @ 0.5% to Daylight.

Sta. 8+76.9 SWS Line No. 2  
 Begin 30" RCP Construction  
 Install 85.5 L.F. 30" RCP (W)  
 Const. 30" Headwall  
 See Sheet No. 9.

Install 46 S.Y.  
 Light Stone Riprap  
 See Sheet No. 14.

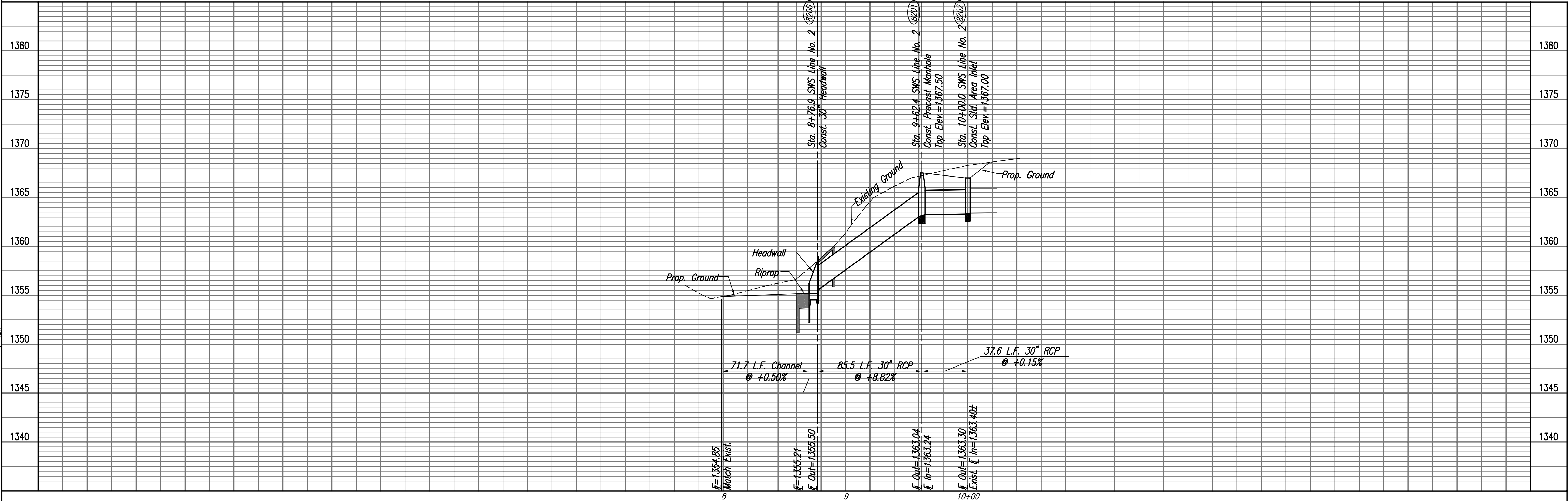
Sta. 9+62.4 SWS Line No. 2  
 Const. Precast Manhole  
 Dia=5'-0"  
 Top Elev.=1367.50  
 Install 37.6 L.F. 30" RCP (SSW)  
 See Sheet No. 10.



COORDINATE LIST		
POINT	NORTH	EAST
8200	386,007.5329	2,373,421.9482
8201	386,000.8951	2,373,336.7062
8202	385,965.8567	2,373,323.1687

8200 = COORDINATE POINT NO.

⊕ PRIOR TO BEGINNING CONSTRUCTION, THE CONTRACTOR SHALL EXCAVATE THE EXISTING 30" RCP AT STATION 10+00.0 TO VERIFY PIPE SIZE, TYPE, AND HORIZONTAL AND VERTICAL LOCATION. THE CONTRACTOR SHALL REPORT HIS FINDINGS TO THE ENGINEER SO THAT ANY NECESSARY PLAN MODIFICATIONS MAY BE MADE. ANY ADDITIONAL LABOR OR MATERIALS NECESSARY TO COMPLETE THE CONNECTION SHALL BE CONSIDERED SUBSIDIARY TO THE PROJECT.



Printed: 08-25-2008 5:53:34 PM by BUS  
 Plot Scale: 1"=40'  
 08/25/08 08:39:55 1:100 08/25/08 5:53:34 PM No. 2 by BUS

OAK CREEK 3RD AND 4TH ADDITIONS  
 STORM WATER DRAIN NO. 350

**SWS LINE NO. 2**

JAMES L. ARMOUR, P.E. - CITY ENGINEER  
 CITY OF WICHITA, PROJECT NO. 468-84534

Professional Engineering Consultants, P.A.  
 303 S. TORREY WICHITA, KANSAS 67202  
 316-262-2091 • FAX 316-262-3003

Designed By: BER  
 Drawn By: BUS  
 Job No.: 35-08397-000  
 Date: March 2007

Sheet 8 of 19