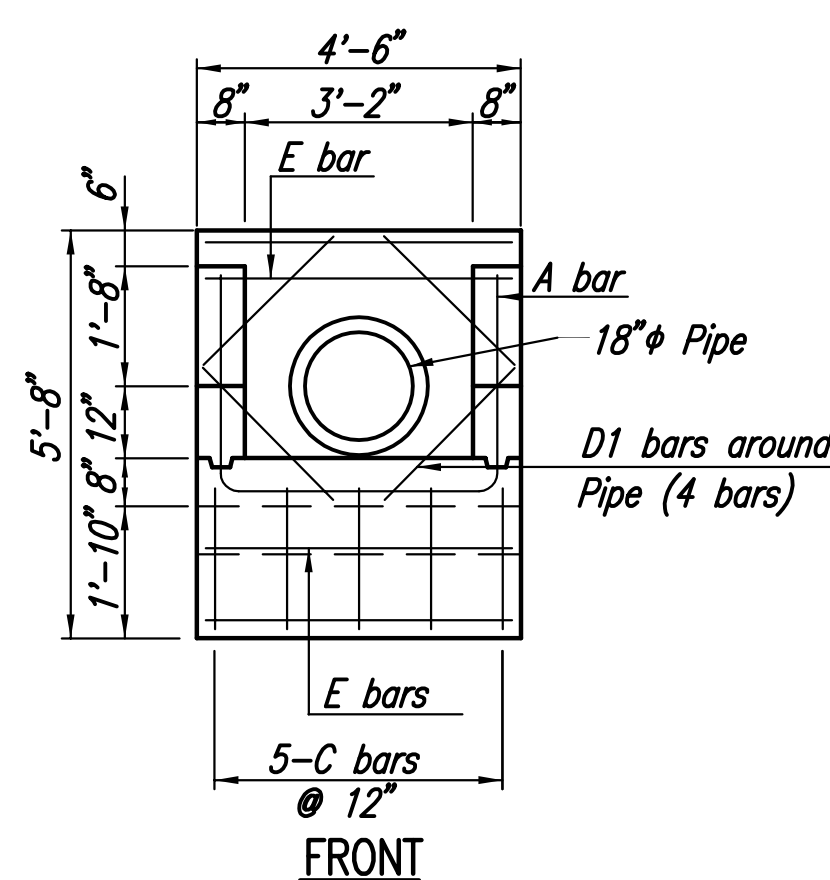
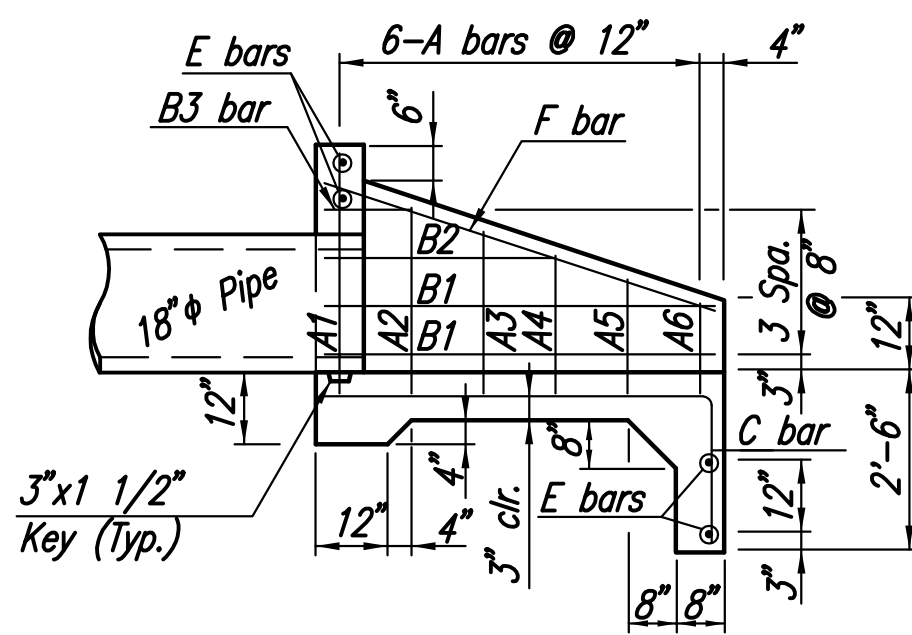


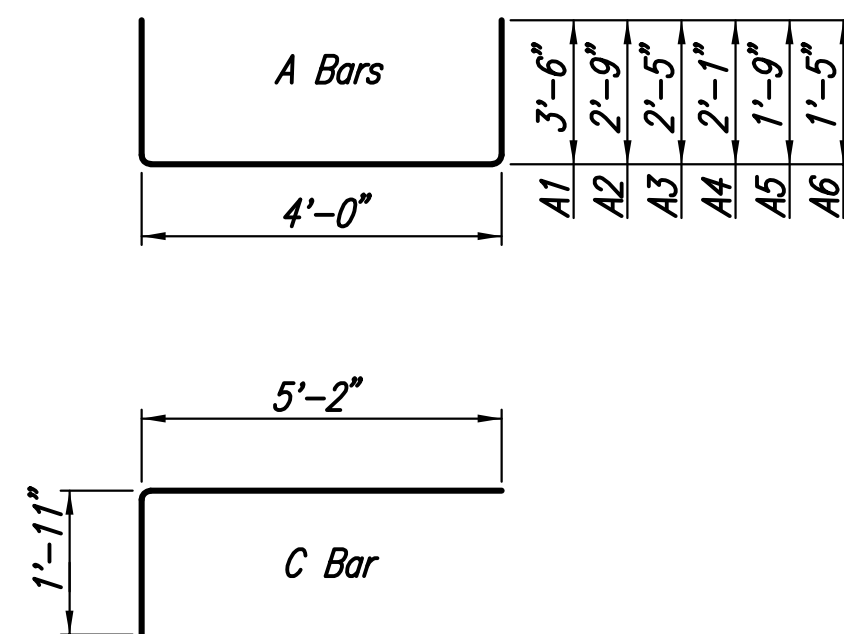
PLAN



FRONT



SECTION

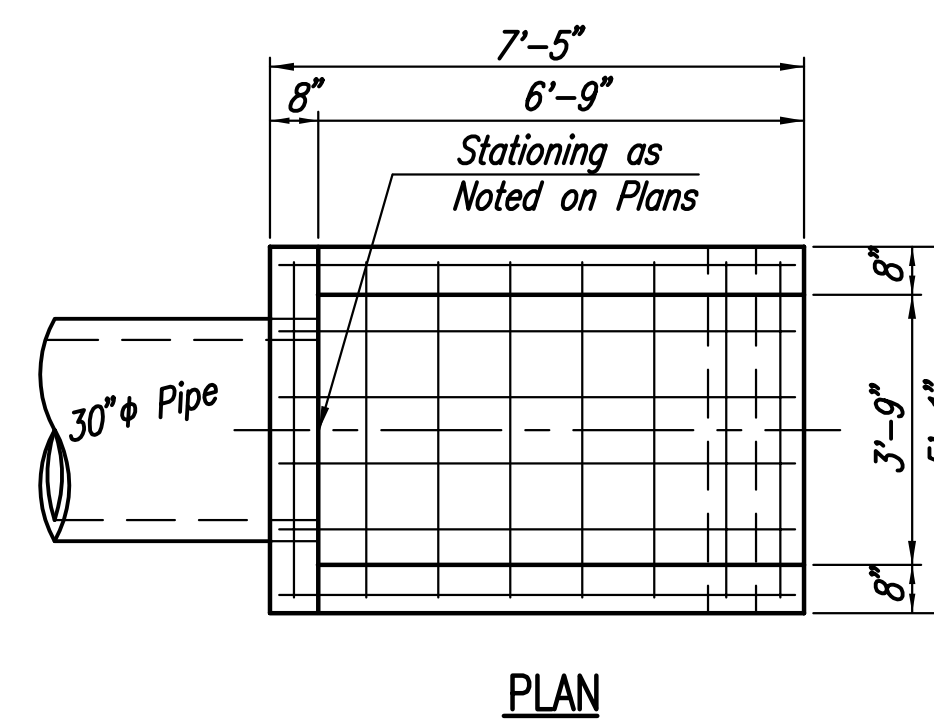


BENDING DIAGRAMS

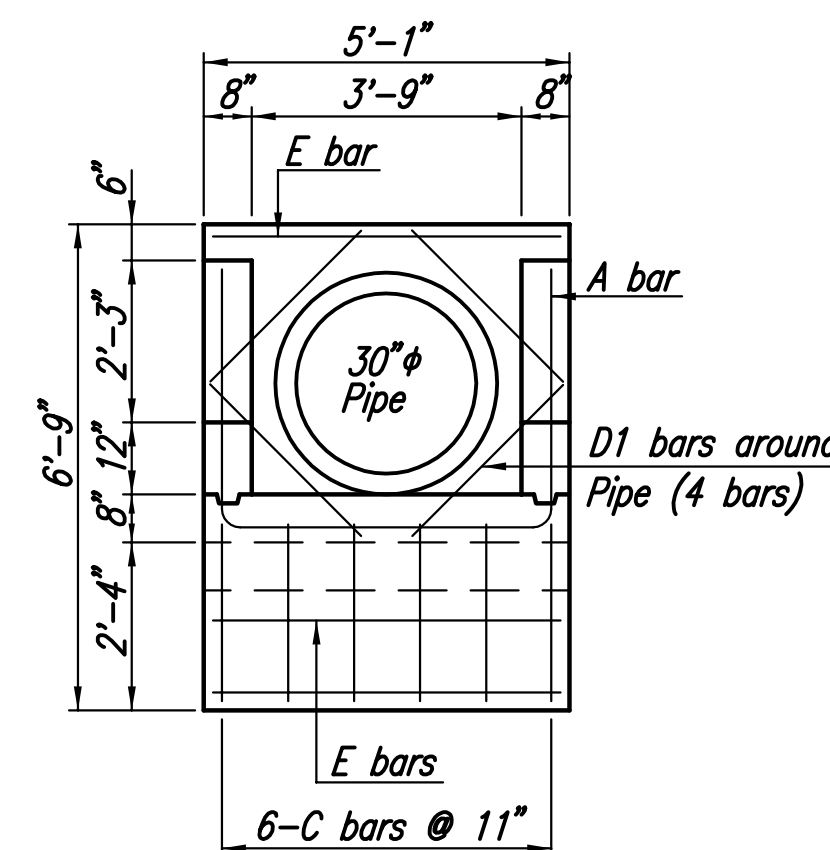
RE-BAR SCHEDULE				
Mark	Shape	No.	Length	Weight
A1		1	11'-0"	7.35
A2		1	9'-6"	6.35
A3		1	8'-10"	5.90
A4		1	8'-2"	5.46
A5		1	7'-6"	5.01
A6		1	6'-10"	4.56
B1		4	5'-5"	14.47
B2		2	3'-6"	4.68
B3		2	1'-5"	1.89
C		5	7'-1"	23.66
D1		4	2'-6"	6.68
E		4	4'-4"	11.58
F		2	5'-9"	7.68
18"	Total Rebars		106	Lbs.
	Concrete		1.66	C.Y.

All Concrete Reinforcement to be #4 bars.

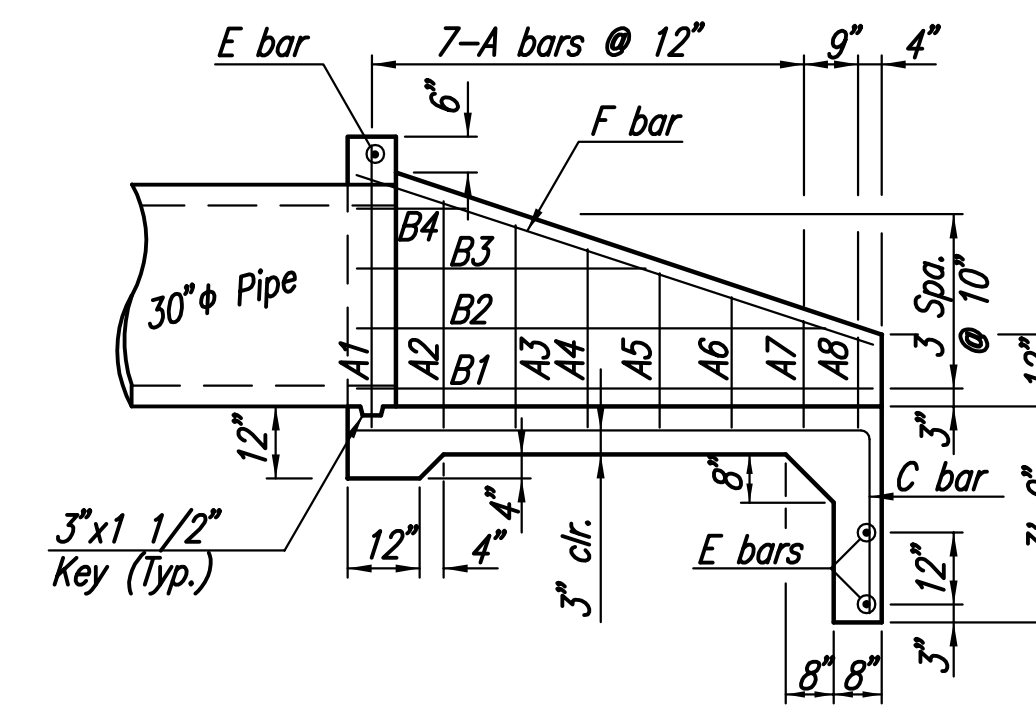
**18" HEADWALL**



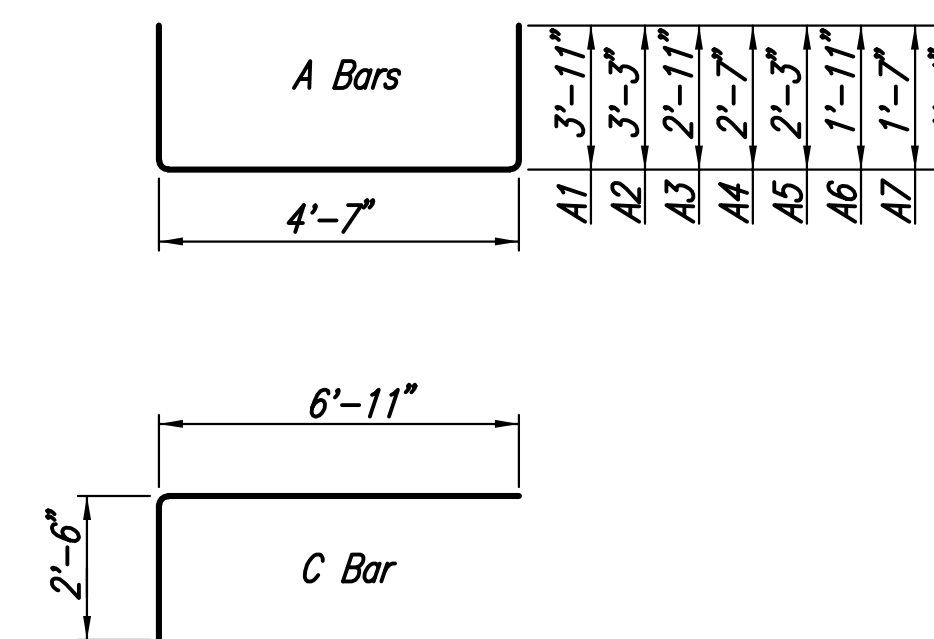
PLAN



FRONT



SECTION



BENDING DIAGRAMS

RE-BAR SCHEDULE				
Mark	Shape	No.	Length	Weight
A1		1	12'-5"	8.29
A2		1	11'-1"	7.40
A3		1	10'-5"	6.96
A4		1	9'-9"	6.51
A5		1	9'-1"	6.07
A6		1	8'-5"	5.62
A7		1	7'-9"	5.18
A8		1	7'-3"	4.84
B1		2	7'-2"	9.57
B2		2	6'-6"	8.68
B3		2	4'-0"	5.34
B4		2	1'-6"	2.00
C		6	9'-5"	37.74
D1		4	3'-0"	8.02
E		3	4'-10"	9.69
F		2	7'-6"	10.02
	Total Rebars		142	Lbs.
	Concrete		2.34	C.Y.

All Concrete Reinforcement to be #4 bars.

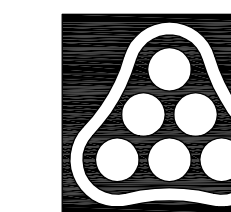
**30" HEADWALL**

**CONCRETE HEADWALL NOTES**

Concrete: Bevel all exposed edges with a 3/4" triangular molding or finish with an approved edging tool. Concrete shall be as per City of Wichita Standard Specifications for concrete paving mix except that it shall have a minimum 28 day compressive strength of 4,000 p.s.i. All pipes shall be flush cut prior to being cast into the headwall.

Reinforcing Steel: All dimensions relative to reinforcing steel are to centerline of bar unless otherwise noted. All clearances shall be 2" unless otherwise noted. All reinforcing steel shall conform to A.S.T.M. designation A615 Grade 60 and shall be epoxy coated.

Payment: A deduction in concrete quantities has been made for the pipe opening. Headwalls shall be paid for at the unit price bid per each by size in place including concrete, reinforcing steel, excavation and all other miscellaneous materials, labor, tools, equipment, and incidentals necessary to complete the work. Quantities shown are for information only.



No.	Revision	By	Date
OAK CREEK 3RD AND 4TH ADDITIONS STORM WATER DRAIN NO. 350 <b>18" AND 30" HEADWALL DETAILS</b> JAMES L. ARMOUR, P.E. - CITY ENGINEER CITY OF WICHITA PROJECT NO. 468-84534 <b>Professional Engineering Consultants, P.A.</b> 303 S. TOPEKA • WICHITA, KANSAS 67202 316-262-2691 • FAX 316-262-3003			
Designed by	BER	Job No.	35-08397-000
Drawn by	BJS	Date	March 2007
			Sheet 9 of 19