

STREET PAVING FOR COUNTRY VIEW LN.

to serve

THE WOODS ADDITION - PHASE 1

Country View Ln., from the south line of the plat,
north to the west line of Fawnwood
Fawnwood, from the northwest line of Lot 5, Block C,
south to the south line of City View
City View, from the west line of Fawnwood,
east to the east line of Lot 31, Block B
Country View Ct., from the east line of Country View Ln.,
east to and including the cul-de-sac

CITY OF WICHITA, KANSAS

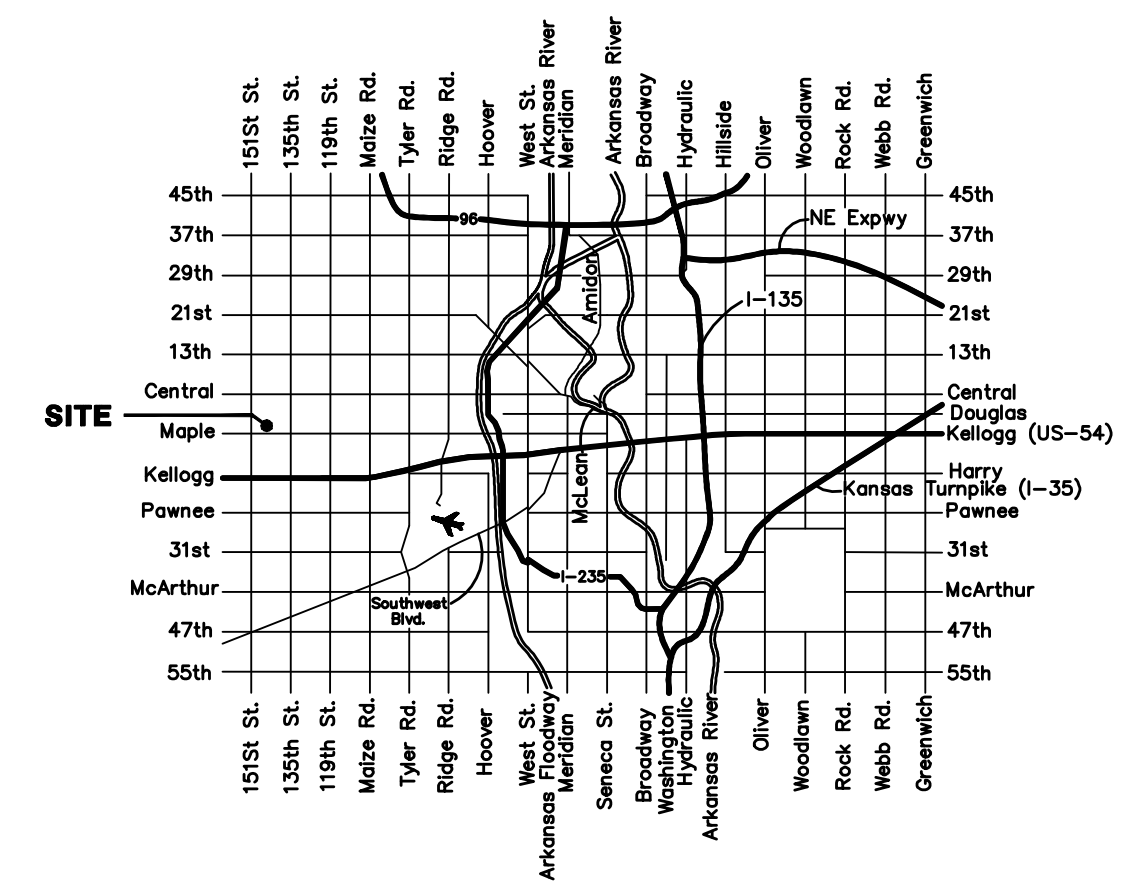
James L. Armour, P.E. City Engineer

Project Number

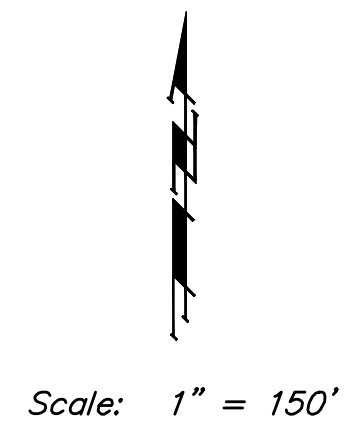
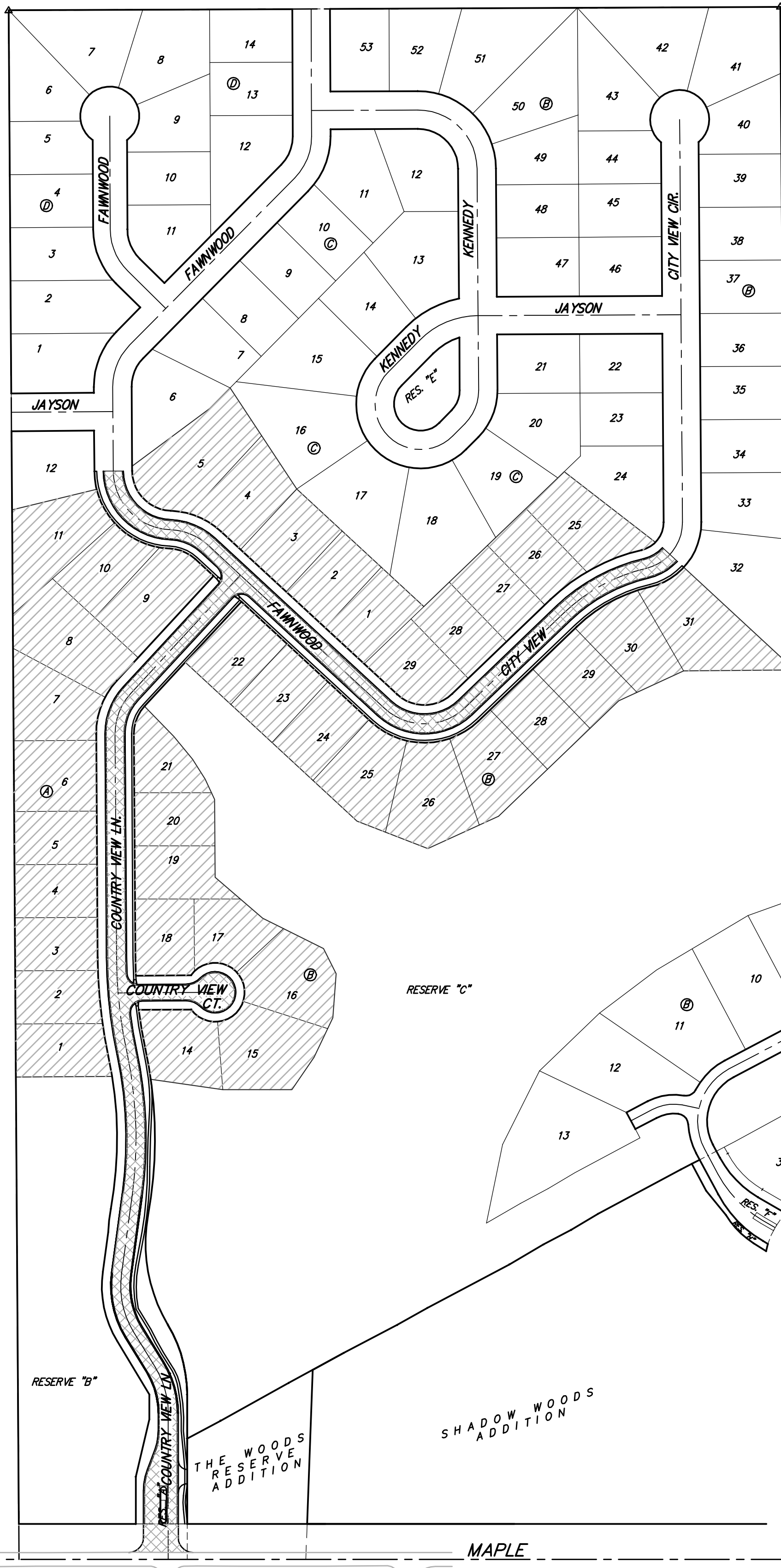
472-84359

O.C.A. Number

766218



VICINITY MAP



BENCHMARKS

BM #1: City of Wichita Benchmark Disc, top of curb at west end of curb return, Northwest corner of intersection of City View and Sheriac Cir. in Shadow Woods Addition. Elev. = 1386.66 NGVD29

BM #2: City of Wichita Benchmark Disc, Top of curb by fire hydrant at west end of curb return, Northwest corner of intersection of Sheriac Cir. and Sheriac Ct., South of SE corner of Lot 13, Block B, Shadow Woods Addition. Elev. = 1392.11 NGVD29

SHEET INDEX

Title Sheet	1
35' Pavement Detail	2
31' Pavement Detail	3
29' Pavement Detail	4
Sign Detail	5
Miscellaneous Details	6
Entrance Detail	7
Drive Details	8
Country View Ln.	9-12
Fawnwood	13-14
City View	15
Country View Ct.	16
Erosion Control Plan	17-18
Erosion Control BMP Details	19-22
Coordinate Sheet	23
Street X-Sections	24-32
Copy of Plat	33-34

Project Earthwork Totals
Excavation = 1,907 C.Y.
Loose Fill = 1,203 C.Y.
Compacted Fill = 42 C.Y.

Total Project Length
3,156 L.F. = 0.60 Miles

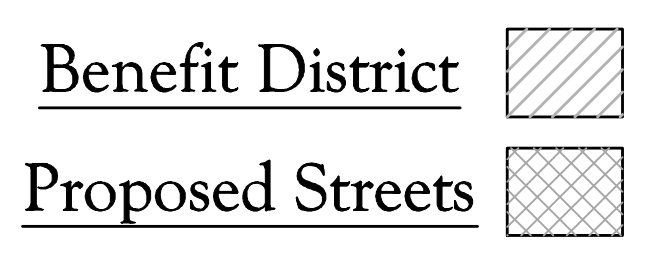
GENERAL NOTES:

- Contractor will be required to provide notice to utility companies a minimum of forty-eight (48) hours prior to any excavation, as follows:

Kansas One-Call 687-2470

The Contractor must notify the following in case of an emergency:

Cox Communications 262-4270
Kansas Gas Service 1-888-482-4950
Westar Energy 383-8650
Aquila Energy 1-800-303-0357
AT&T 1-800-288-2020
City of Wichita Water Dept. 268-4563
City of Wichita Sewer Maint. 268-4024
City of Wichita Storm Sewer Maint. 268-4090
City of Wichita Traffic Maint. 268-4034
ConocoPhillips Pipeline Co. 1-877-267-2290
Southern Star Pipeline Co. 529-6600
Kinder-Morgan Pipeline Co. 1-888-844-5658
Quest Midstream Partners L.P. 1-800-467-2751
- Utility service lines, poles, valve boxes, meters, and etcetera are to be adjusted as necessary by others prior to construction unless the plans specifically call for their adjustment by the Contractor or unless the plans specifically identify a utility to be adjusted by its owner during construction. Existing utilities and their location, as shown on the plans, represent the best information obtainable for design. The Contractor will be required to work around existing utilities within the right-of-way which do not conflict with proposed construction.
- Rubble from the removal of miscellaneous structures and excess excavation which is to be wasted shall be disposed of on sites to be provided by the Contractor. These sites shall be approved by the Engineer as to suitability, appearance and site location. Locations, in the opinion of the Engineer, that will leave an unsightly appearance will not be approved. All disposal sites must be approved by the Kansas Department of Health and Environment. Material either stockpiled or disposed of in a flood plain would require a Kansas State Board of Agriculture permit. Any material dumped in waters of the United States or wetlands is subject to U.S. Corps. of Engineers permitting regulations. Any material buried or stockpiled beyond approved construction limits would require additional archaeological investigations unless buried in a previously approved borrow location.
- Trees and shrubs in public right-of-way which are in direct conflict with proposed new construction shall be removed by the Contractor ONLY with the Developer or Baughman Company approval. Trees and shrubs which are not in direct conflict with proposed new construction shall be saved and protected from damage.
- The Contractor shall give all property owners and/or tenants of developed property abutting the construction of this project a minimum of ten (10) days notice prior to start of construction.
- The Contractor shall be responsible for preserving property irons. The Contractor will be required to re-establish any property irons which are damaged or destroyed by his construction operations. Such irons shall be re-established by a licensed land surveyor in accordance with state laws.
- The contractor shall adjust valve boxes as necessary to match proposed grade. Cost to be included in bid item, "Site Clearing & Restoration."
- All existing and proposed erosion control measures including silt fencing, erosion control mat, straw bales, inlet barriers, and const. entrance shall be maintained throughout construction by the contractor and until project is accepted by the City of Wichita. The on-site engineer shall complete weekly reports on the status of erosion control measures. The contractor shall be required to comply with maintenance and/or replacement of erosion control measures as determined by the on-site engineer until project is accepted by City of Wichita.
- A saw cut of at least one-half the depth of existing surface courses or one-fourth the depth of the existing total pavement thickness shall be provided at locations where proposed construction abuts the existing surface course or pavement for which partial removal of that surface or pavement is required. Sawed joint to facilitate removal within three (3) feet of existing joints will not be permitted and for such instances the limits of removal shall extend to the existing joint. Such saw cuts will not be paid for directly and this cost shall be considered as subsidiary to the removal of the surface or pavement.
- Limits of earthwork shall match existing ground elevations at the right-of-way line unless otherwise noted on the plans or as shown on cross section with a new finished grade elevation. When a new finished grade elevation is shown, the earthwork shall extend one foot beyond the right-of-way line and then slope up or down using permissible slopes to match the existing ground surface.
- All areas disturbed during construction shall be seeded as noted on the Erosion Control Plan. Contractor shall prepare ground per City of Wichita Specifications. All costs associated with seeding shall be included in bid item "Project Seeding"
- The Contractor shall drain any standing water in sump areas of the proposed pavement. Contractor shall overexcavate and recompact these areas as required to maintain compaction of 95% Standard Proctor Density. Cost to be incidental to pavement.
- Mass Grading to be completed prior to construction as shown on cross-sections to within 0.2'. Contractor shall satisfy himself with the earthwork quantities as bid for excavation and compacted fill prior to bidding. No additional payments or change orders for Earthwork will be accepted.
- The developer for this project is Jay Russell, (316) 722-2417
- No construction or equipment operation shall be allowed within ConocoPhillips, or Quest easements without first contacting a representative from the respective company. No work shall be allowed within these easements until permission has been granted by the pipeline companies and/or encroachment agreements have been signed. Contact engineer for status prior to construction.



AUGUST 2008



Baughman Company, P.A. 315 Ella St. Wichita, KS 67211 P 316-262-7271 F 316-262-0145
ENGINEERING | SURVEYING | PLANNING | LANDSCAPE ARCHITECTURE

