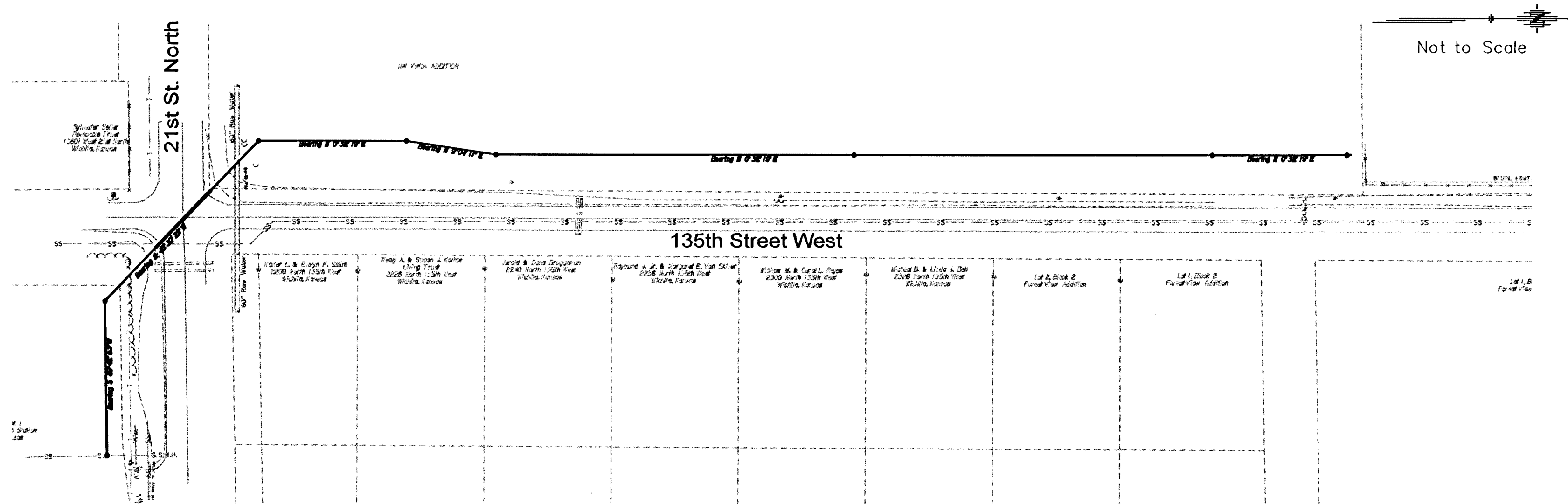


MAIN 10 NWI SANITARY SEWER PROJECT 135th STREET WEST

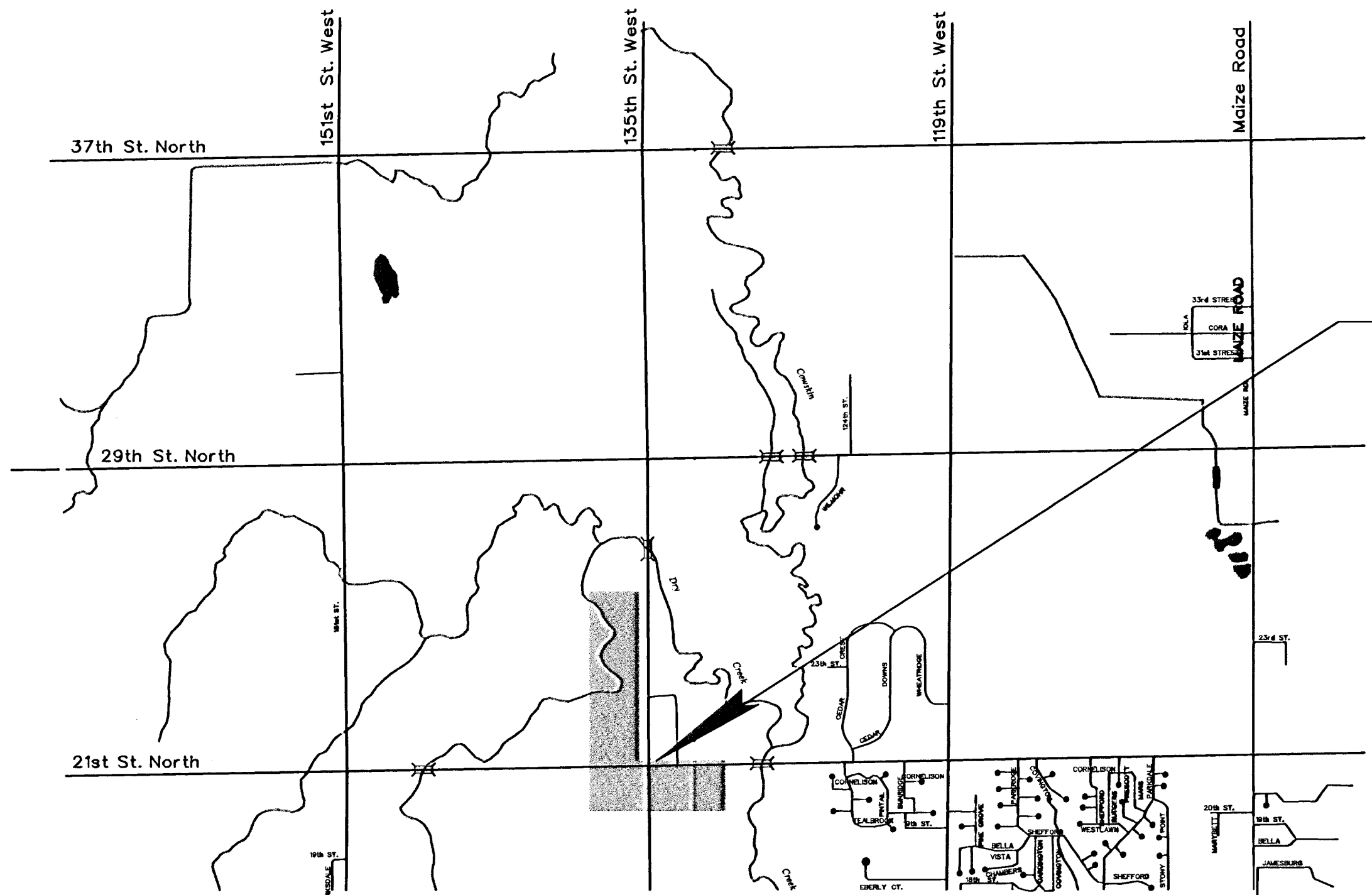
21st to 29th Street North
SANITARY SEWER PROJECT NO. 468-83971
OCA NO. 622096

LEGEND

- W — Existing Water Line
- E — Electric Line
- G — Gas Line
- T — Telephone Line
- CATV — Cable TV Line
- Center Line
- Existing Right-of-Way
- Power Pole
- E.M. Electric Meter
- ⊙ Luminaire
- ⊙ Yard Light
- ⊙ Pull Box
- ⊙ Signal Control Box
- M.A. Mast Arm
- P.M.S. Pedestal Mounted Signal
- T.M.H. Telephone Manhole
- Telephone Pedestal
- PHONE Telephone
- Cable Television Box
- ▶ W.V. Water Valve
- W.M. Water Meter
- ⊙ Fire Hydrant
- S.H. Sprinkler Head
- ▶ I.C.V. Irrigation Control Valve
- A.R. Air Release
- G.M.S. Gas Monitoring Station
- G.M. Gas Meter
- G.T.S. Gas Testing Station
- G.F.C. Gas Filler Cap
- S.S.M.H. Sanitary Sewer Manhole



Vicinity Map



Project Map

INDEX TO DRAWINGS

TITLE SHEET	1
GENERAL NOTES	2
CITY OF WICHITA STANDARDS	3 - 4
PLAN SHEETS	5 - 6

*Dondlinger & Sons Construction Co., Inc. - Contractor
Smith/Peterson, City - Inspectors
Released 1/15/06
As-Built
.pdf by JDL 4/27/06*



CITY OF WICHITA, KANSAS
James L. Armour, P.E. City Engineer
MAY, 2005

PREPARED BY
TRANSYSTEMS CORPORATION
245 North Waco Suite 420
Wichita, Kansas



g:\w04\0006\Road\Res.s.sht
05/16/2005 12:01:19 PM