

PRIVATE STORM SEWER SYSTEM SPRING HILL SUITES

TO SERVE LOT 12, BLK 1, THE GATEWAY CENTER 2ND ADD PRIVATE PROJECT NUMBER 1787 PPS (607861)

INDEX OF SHEETS

1. TITLE SHEET
2. SITE GRADING PLAN (FOR REFERENCE)
3. STORM SEWER LINE 1
4. STORM SEWER LINE 1 & 4
5. STORM SEWER LINE 2
6. STORM SEWER LINE 3
7. TYPE I INLET
8. 2x2 DROP INLET
9. STANDARD MANHOLE
10. EROSION CONTROL
11. EROSION CONTROL DETAILS

BENCHMARK

BENCH MARK: CHISELED SQUARE ON TO OF CURB AT EAST END OF CENTER MEDIAN AT THE NORTH ENTRANCE TO RESIDENCE INN, NORTH OF RESIDENCE INN BUILDING
ELEVATION = 1390.29 (NGVD29)

REVISED 7/22/08

GENERAL NOTES

1. Contractor will be required to provide a minimum advance notice of forty-eight (48) hours to utility companies prior to starting any excavation as follows:

Kansas One-Call 687-2470

The Contractor must notify the following in case of an emergency:

Cox Communications	262-0661
Kansas Gas Service	383-8600
Westar	383-8600
AT&T	1-800-286-8313
City of Wichita Water Department	262-6000
City of Wichita Sewer Maintenance	262-6000

2. Existing utilities and their location, as shown on the plans, represent the best information obtainable for design. Location information has been obtained from the various utility companies and is either from company record drawings or company-provided field locations. The Contractor will be required to work around existing utilities within the right-of-way which do not conflict with proposed construction.
3. A saw cut of the full depth of existing surface courses or pavement thickness shall be provided at locations where proposed construction abuts an existing surface course or pavement for which partial removal of that surface or pavement is required, except when such saw cuts are within three (3) feet of an existing joint the limits of removal shall be extended to the existing joint.
4. This project is located within the limits of a larger project which will include building construction. The General Contractor for the project will submit a Storm Water Pollution Prevention Plan for the entire project prior to beginning any work on this project.
5. This project is to be constructed in accordance with City of Wichita Standard Specifications for the Construction of City Projects, and Policy on Construction of Public Works Improvements by Private Contract.
6. No work shall begin on this project before required bonds are submitted to the City of Wichita, and the project inspector has been notified.
7. All areas of public R/W disturbed by construction of this project are to be restored in accordance with Administrative Regulation AR 6.5 of the City of Wichita.

As Built Plans:

CONTRACTOR: Ewertzs Excavating
INSPECTOR: Larry Gann, K E Miller Engineering
INSPECTOR: Tom Jones, K E Miller Engineering
.PDF by: NWS, 09-11-08

COORDINATE CONTROL TABLE

CONTROL NO.	DESCRIPTION	NORTHING	EASTING
①	N.W. PROP. COR. PEC 1/2 REBAR	19964.51	19625.53
②	PC PEC 1/2 REBAR	19967.73	19832.11
③	N.E. PROP. COR. RB 1/2 REBAR	19994.17	19983.11
④	S.E. PROP. COR. RB 1/2 REBAR	19543.15	19991.44
⑤	S.W. PROP. COR. PEC 3/4 IP	19537.45	19633.48

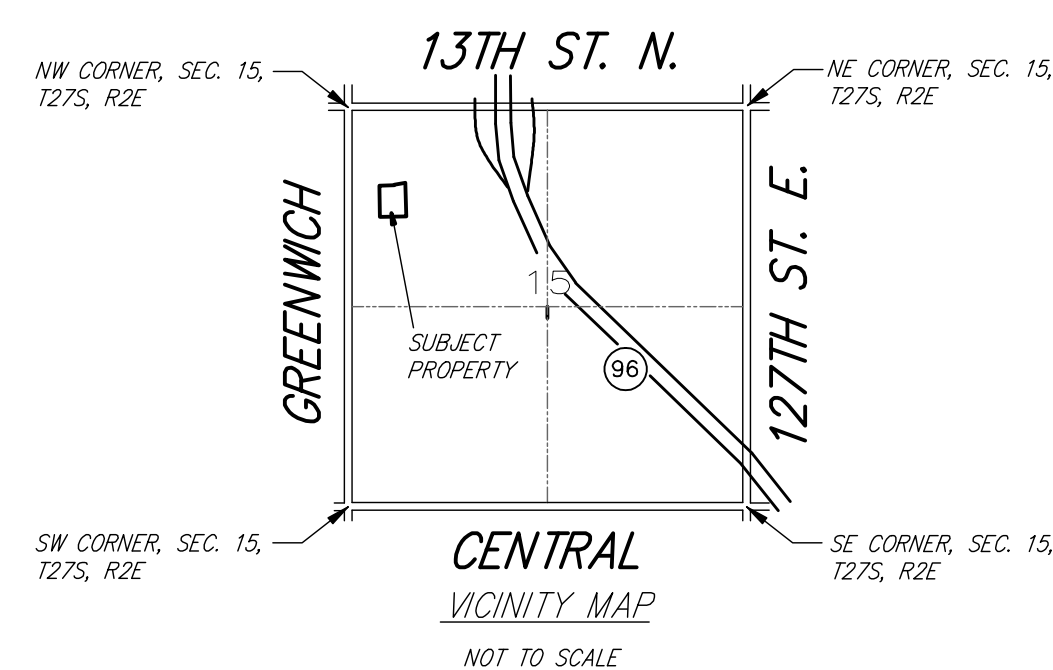
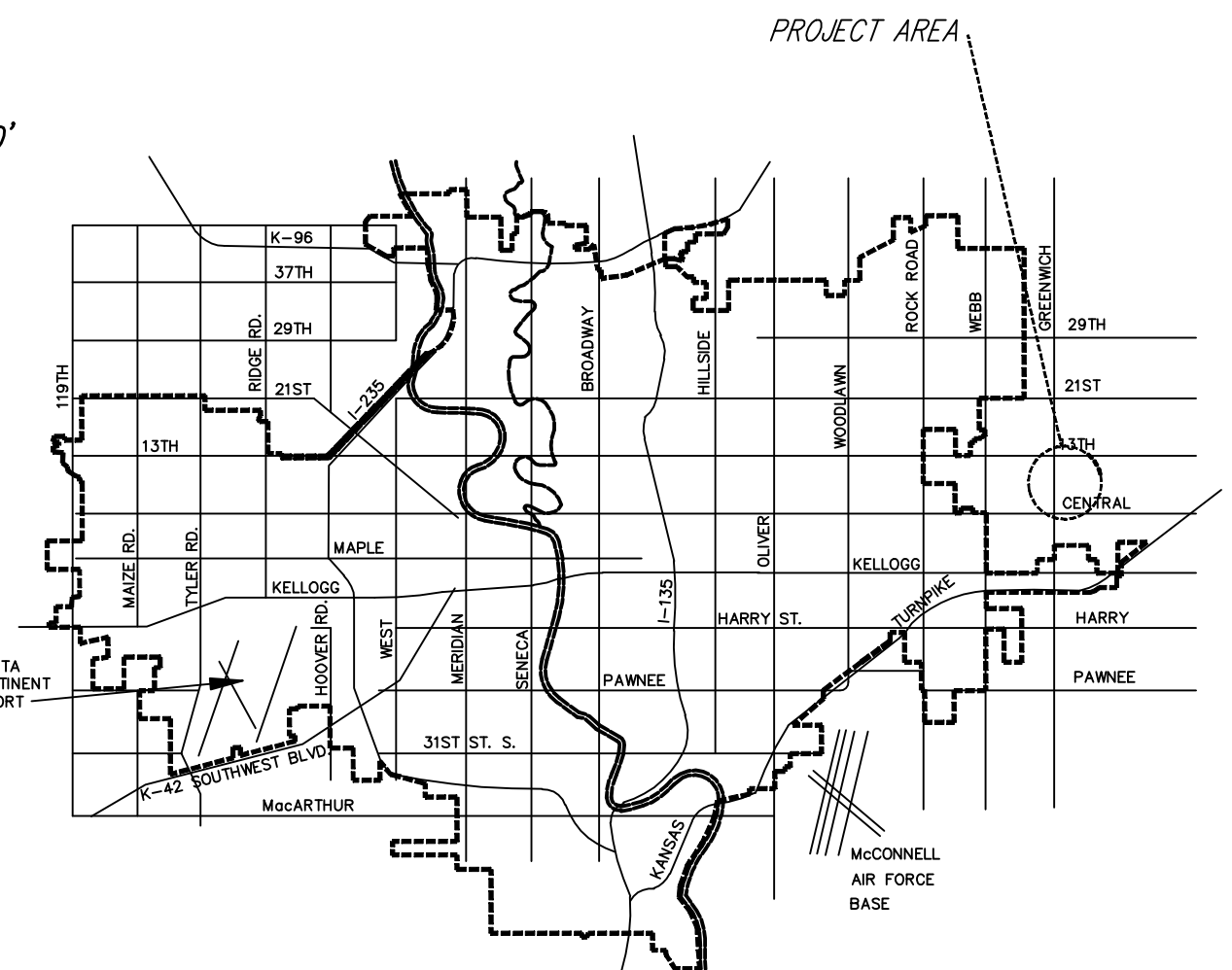
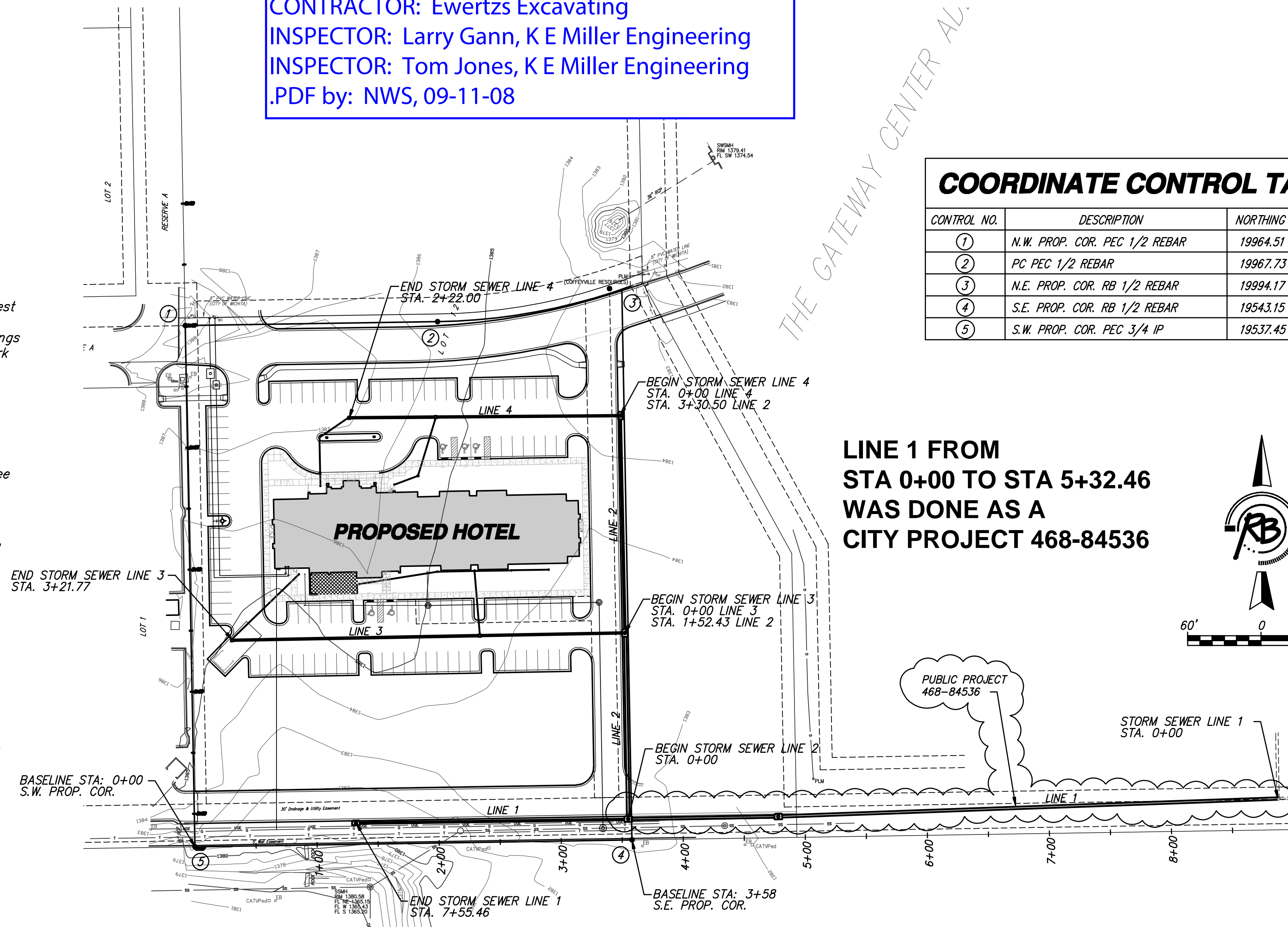
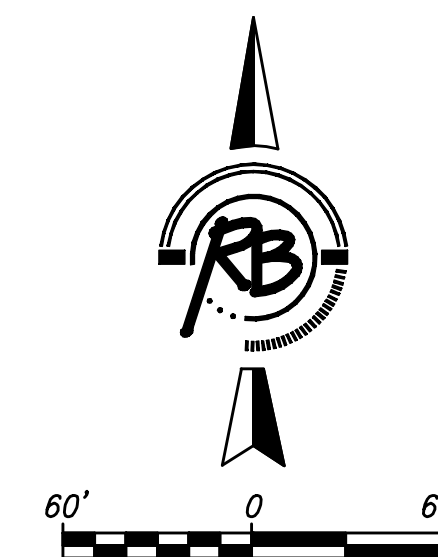
APPROVED AS NOTED
BY CITY ENGINEER OF WICHITA

Sanitary Sewers _____
Storm Sewers _____
Driveway Approaches _____
Water Mains _____
Paving _____

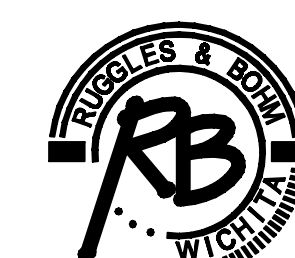
NOTE TO CONTRACTORS

Inspection and testing for this project are to be provided by a Licensed Consulting Engineering Firm under contract with the Owner/Developer. Said inspection to be in accordance with the City of Wichita standard construction engineering practices and certified by a Licensed Professional Engineer. No work shall be performed in dedicated easements or public right-of-way by the Contractor without such inspection, nor shall any work be commenced without written authorization by the City Engineer.

**LINE 1 FROM
STA 0+00 TO STA 5+32.46
WAS DONE AS A
CITY PROJECT 468-84536**



CITY OF WICHITA, KANSAS
JAMES L. ARMOUR, P.E. - CITY ENGINEER



Ruggles & Bohm, P.A.
Engineering, Surveying, Land Planning
924 North Main
Wichita, Kansas 67203
www.rbkansas.com
(316) 264-8008
(316) 264-4621 fax
E-mail: info@rbkansas.com