

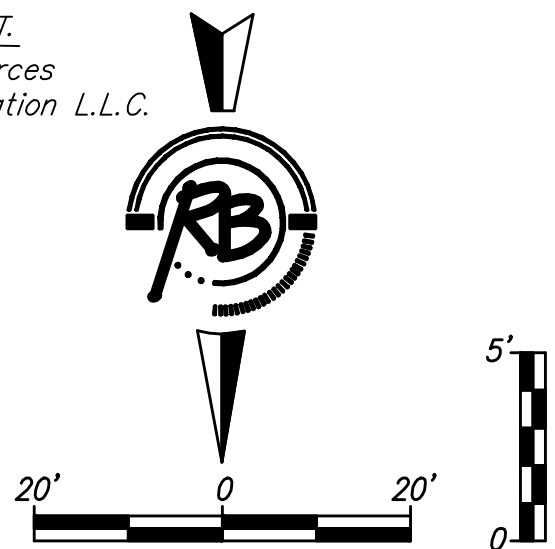
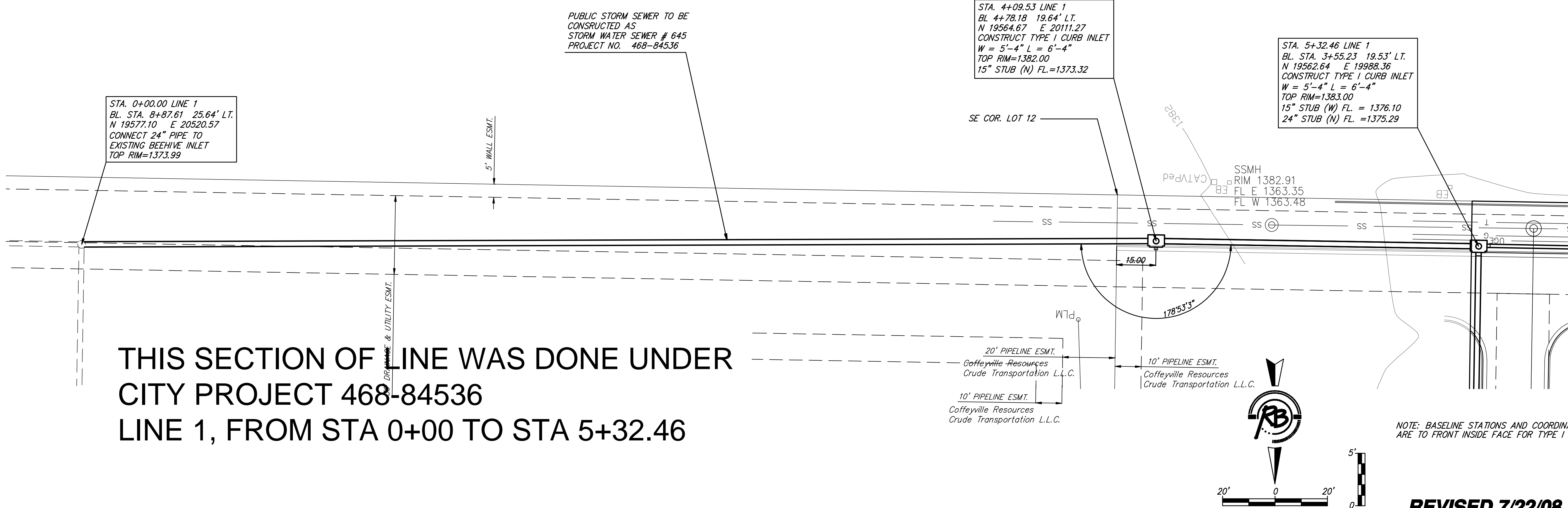
THIS SECTION OF LINE WAS DONE UNDER CITY PROJECT 468-84536
 LINE 1, FROM STA 0+00 TO STA 5+32.46

PUBLIC STORM SEWER TO BE CONSTRUCTED AS STORM WATER SEWER # 645 PROJECT NO. 468-84536

STA. 4+09.53 LINE 1
 BL. 4+78.18 19.64' LT.
 N 19564.67 E 20111.27
 CONSTRUCT TYPE I CURB INLET
 W = 5'-4" L = 6'-4"
 TOP RIM=1382.00
 15" STUB (N) FL.=1373.32

STA. 5+32.46 LINE 1
 BL. STA. 3+55.23 19.53' LT.
 N 19562.64 E 19988.36
 CONSTRUCT TYPE I CURB INLET
 W = 5'-4" L = 6'-4"
 TOP RIM=1383.00
 15" STUB (W) FL. = 1376.10
 24" STUB (N) FL. =1375.29

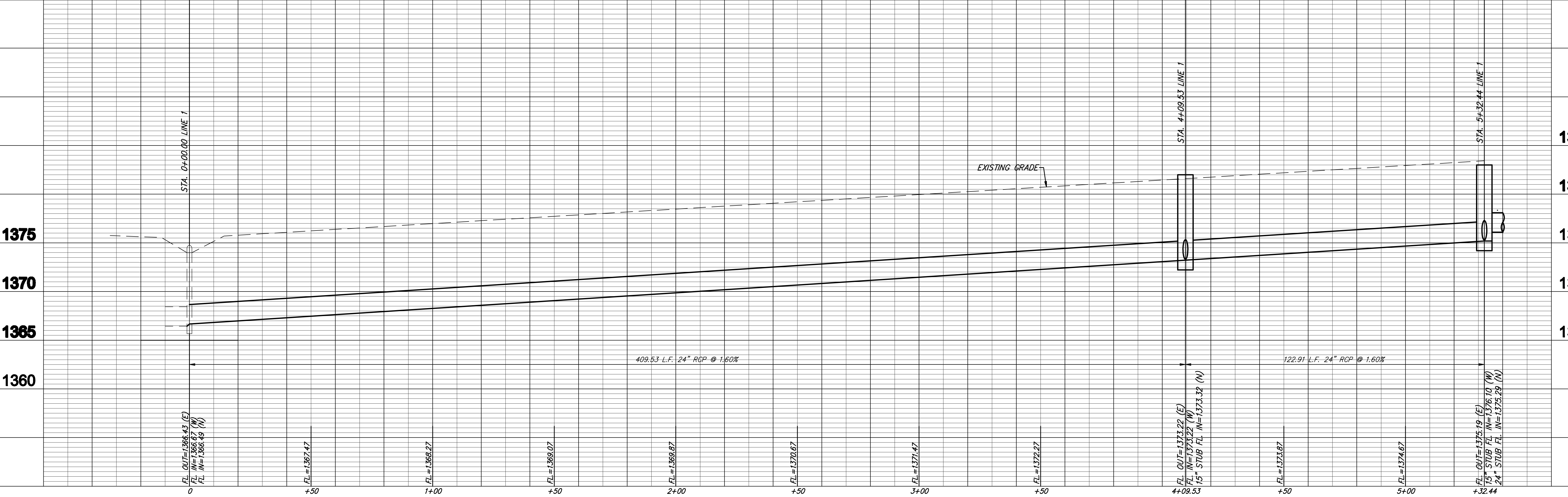
STA. 0+00.00 LINE 1
 BL. STA. 8+87.61 25.64' LT.
 N 19577.10 E 20520.57
 CONNECT 24" PIPE TO EXISTING BEEHIVE INLET
 TOP RIM=1373.99



NOTE: BASELINE STATIONS AND COORDINATES ARE TO FRONT INSIDE FACE FOR TYPE I INLETS

REVISED 7/22/08

LINE 1



Ruggles & Bohlen, P.A.
 Engineering, Surveying, Planning
 1000 W. 17th St., Suite 100
 Wichita, Kansas 67202
 Phone: 316.261.1111
 Fax: 316.261.1112
 www.rugglesandbohlen.com

**Spring Hill Suites, Gateway Center
 Line 1 Storm Sewer
 Wichita, Kansas**

Project No. 1787
 PFS 602861
 Storm Sewer (SWS Line 1)

DATE: July 22, 2008
 DRAWN BY: JDM
 CHECKED BY: JDM
 TCR: JDM
 UNIT: 1/8" = 1'-0"