

STORM WATER DRAIN #344

TO SERVE

THE MOORINGS TENTH ADDITION

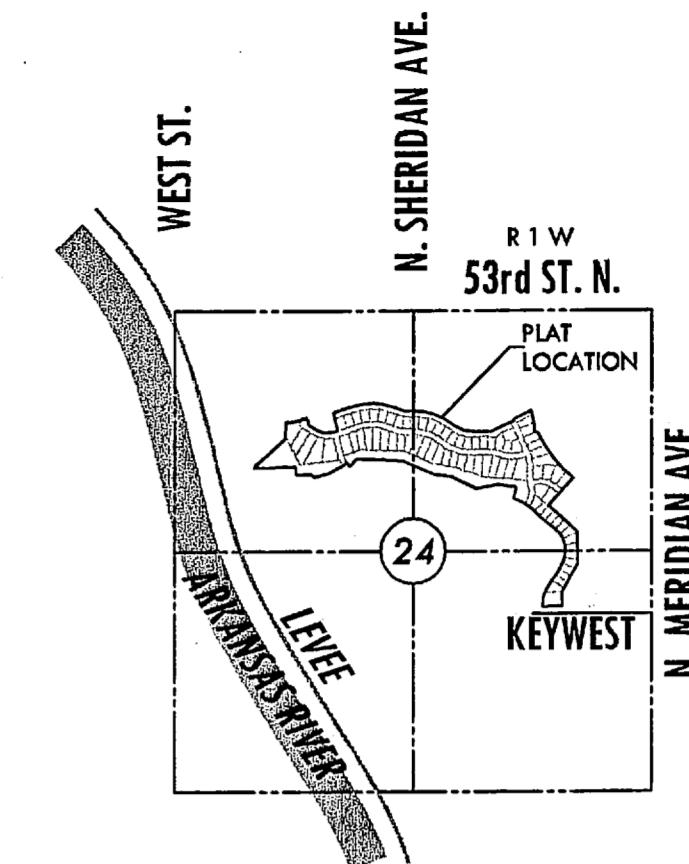
PROJECT NO. 468-84468

AN ADDITION TO THE CITY OF WICHITA
SEDGWICK COUNTY, KANSAS

JAMES L. ARMOUR, P.E., CITY ENGINEER

OCA NO. 751470

MKEC
ENGINEERING
CONSULTANTS, INC.
411 N. WEBB ROAD
WICHITA, KS. 67206
316-684-9600



VICINITY MAP

GENERAL NOTES

1. UNLESS SHOWN OR STATED OTHERWISE ON THESE DRAWINGS, MATERIALS AND CONSTRUCTION SHALL BE IN ACCORDANCE WITH CITY OF WICHITA STANDARD SPECIFICATIONS.

2. THE TOPS OF INLETS AND MANHOLES AS NOTED ON THE PLANS MAY VARY SO AS TO MEET PROPOSED TOP OF CURB ELEVATIONS OR PAVEMENT ELEVATIONS. THE FIELD ENGINEER SHALL LOCATE INLETS AND MANHOLES WITH REFERENCE TO PROPOSED PAVING PLANS OF THE PERTINENT STREETS. THE CONTRACTOR SHALL BE RESPONSIBLE FOR PRESERVING PROPERTY IRONS.

3. THE CONTRACTOR SHALL BE REQUIRED TO RE-ESTABLISH ANY PROPERTY IRONS WHICH ARE DAMAGED OR DESTROYED BY HIS CONSTRUCTION OPERATIONS. SUCH IRONS SHALL BE RE-ESTABLISHED BY A LICENSED LAND SURVEYOR IN ACCORDANCE WITH STATE LAWS. CONTRACTOR SHALL NOTIFY UTILITY COMPANIES OF CONSTRUCTION SCHEDULING.

4. EXISTING UTILITIES AND THEIR LOCATIONS, AS SHOWN ON THE PLANS REPRESENT THE BEST INFORMATION OBTAINABLE FOR DESIGN. LOCATION INFORMATION HAS BEEN OBTAINED FROM THE VARIOUS COMPANIES AND IS EITHER FROM COMPANY UTILITY DRAWINGS OR COMPANY PROVIDED FIELD LOCATIONS. THE PLAN LOCATIONS SHOWN ARE NOT GUARANTEED. ADDITIONAL EXISTING UTILITIES MAY ALSO BE ENCOUNTERED.

5. CONTRACTOR WILL BE REQUIRED TO PROVIDE A MINIMUM ADVANCE NOTICE OF FORTY-EIGHT (48) HOURS TO UTILITY COMPANIES PRIOR TO STARTING ANY EXCAVATION.

THE CONTRACTOR MUST NOTIFY THE FOLLOWING IN CASE OF EMERGENCY:

KANSAS ONE-CALL 687-2470

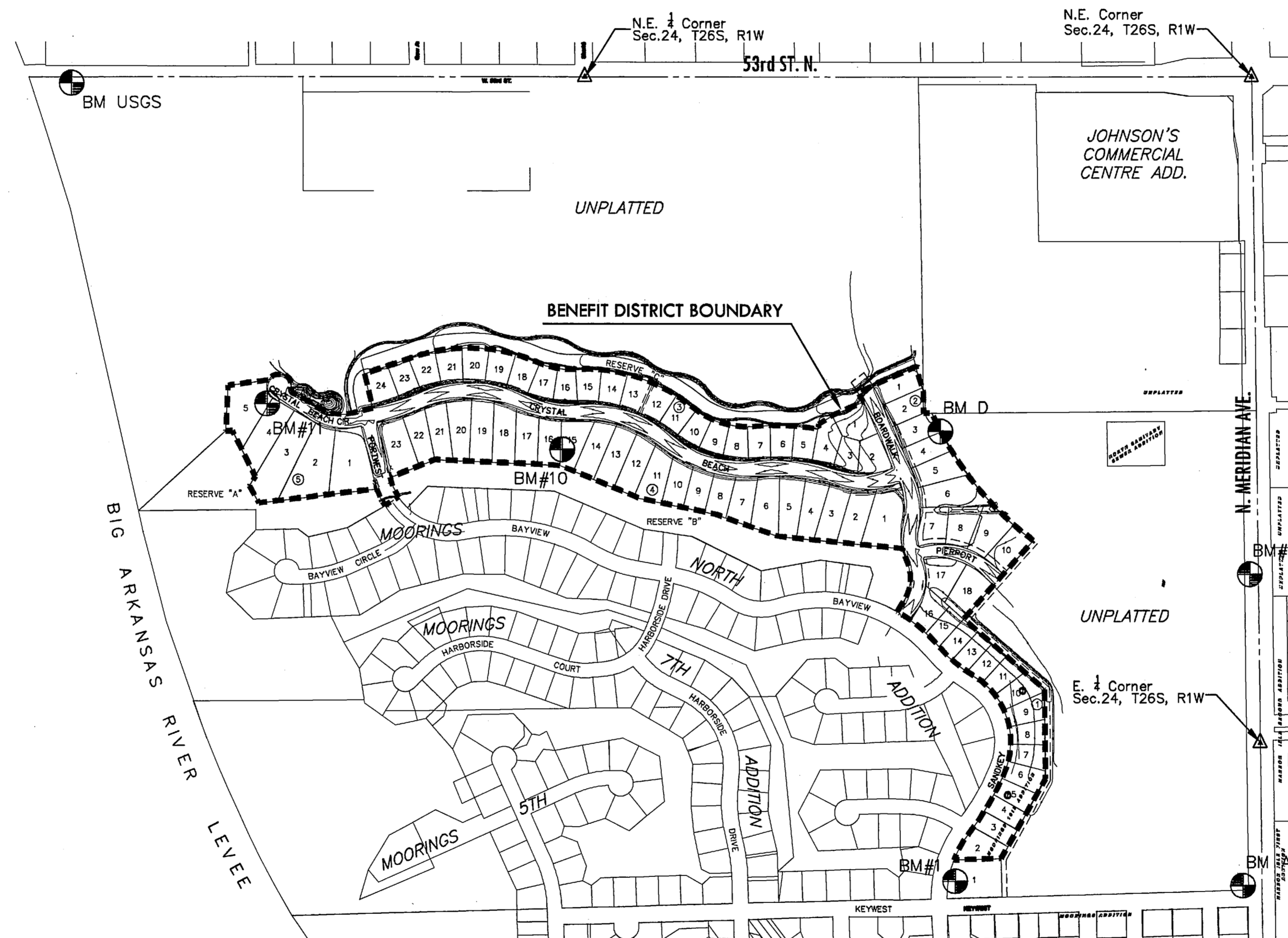
COX COMMUNICATIONS (CABLE) 262-0661
WESTAR ENERGY (ELECTRIC) 383-8600
SBC (TELEPHONE) 1-800-870-8390
CITY OF WICHITA WATER & SEWER 668-4504
AQUILA (GAS) 946-0016
KANSAS GAS SERVICE (GAS) 832-3101

6. RUBBLE FROM THE REMOVAL OF MISCELLANEOUS STRUCTURES AND EXCESS EXCAVATION WHICH IS TO BE WASTED SHALL BE DISPOSED OF ON SITES TO BE PROVIDED BY THE CONTRACTOR. THESE SITES SHALL BE APPROVED BY THE ENGINEER AS TO SUITABILITY, APPEARANCE AND SITE LOCATION. LOCATIONS THAT, IN THE OPINION OF THE ENGINEER, WILL LEAVE AN UNSIGHTLY APPEARANCE WILL NOT BE APPROVED. ALL DISPOSAL SITES MUST BE APPROVED BY THE KANSAS DEPARTMENT OF HEALTH AND ENVIRONMENT. MATERIAL EITHER STOCKPILED OR DISPOSED OF IN A FLOOD PLAIN WOULD REQUIRE A KANSAS STATE BOARD OF AGRICULTURE PERMIT. ANY MATERIAL DUMPED IN WATERS OF THE UNITED STATES OR WETLANDS IS SUBJECT TO U.S. CORPS OF ENGINEERS PERMITTING REGULATIONS. ANY MATERIAL BURIED OR STOCKPILED BEYOND APPROVED CONSTRUCTION LIMITS WOULD REQUIRE ADDITIONAL ARCHAEOLOGICAL INVESTIGATIONS UNLESS BURIED IN A PREVIOUSLY APPROVED BORROW LOCATION.

7. ALL COMPACTION OF EARTHWORK SHALL BE 95% STANDARD DENSITY.

8. OTHER CONSTRUCTION MAY BE UNDER WAY SIMULTANEOUSLY WITH THIS PROJECT. THE CONTRACTOR SHALL COORDINATE WITH ANY CONTRACTORS CONSTRUCTING OTHER PORTIONS OF THE PROJECT.

9. EXISTING WATER WELLS MAY BE ENCOUNTERED. WHEN SUCH WELLS ARE DISCOVERED PLUG PER STATE REGULATION STANDARDS. COST SUBSIDIARY TO SITE CLEARING AND RESTORATION.



INDEX TO DRAWINGS

SHEET NO.	DESCRIPTION
1.....	TITLE SHEET
2-5.....	GRADING SHEETS
6-9.....	LOT GRADING SHEETS
10.....	EROSION CONTROL/SEEDING
11-15.....	BMP DETAILS
16-17.....	FINAL PLAT

BENCHMARKS

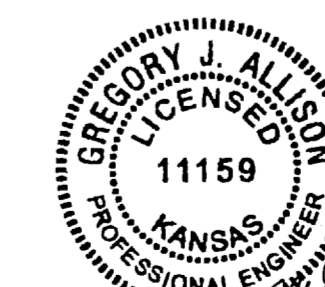
BM USGS	USGS gauging station top wall at southeast corner bridge 53rd and Arkansas River; being 29 feet south and 146 feet east of NW corner of the NW corner of Sec. 24, T26S, R1W line of Section Elev.=1353.025 (NDVD 29)
BM A	City of Wichita disc northwest corner of Meridian and Keywest Elev. = 1329.36 (NGVD 29)
BM #1	T-post 66 feet south of the northwest corner of Reserve "E" lying 21.7 feet E. of back of curb. Elev. = 1330.76 (NGVD 29)
BM D	T-post 2.8 feet south of the NE. corner of Lot 4, Block 2. Elev. = 1329.02 (NGVD 29)
BM #5	Square cut at SW. corner of RCB; 46' feet west of centerline of Meridian Ave. and 668' N. of the E. 1/4 corner, Sec. 24, T26S, R1W. Elev. = 1328.19 (NGVD 29)
BM #5	T-post S. of the NW. corner of Lot 4, Block 5, being 29 feet S. of the back of curb. Elev.=1333.635 (NDVD 29)
BM #5	T-post 100.5 feet S. of the NW. corner of Lot 15, Block 4, being 2.0 feet E. of the east line of said Lot 15. Elev.=1332.075 (NDVD 29)

EARTHWORK TABULATIONS:

EXCAVATION	35,100 CY
COMPACTED FILL (95% DENSITY)	29,250 CY

NOTE: A 20% SHRINKAGE/EXPANSION FACTOR HAS BEEN ADDED EARTHWORK QUANTITIES TO ALLOW FOR COMPACTION AND HANDLING.

1"=300'



STORM WATER DRAIN #344
THE MOORINGS TENTH
ADDITION

TITLE SHEET

SHEET TITLE
468-84468
PROJECT NUMBER

DFL / RKO / GJA
DESIGNED / DRAWN / CHECKED

ISSUED
August 2008
REVISED

SHEET NO.

1 of 17