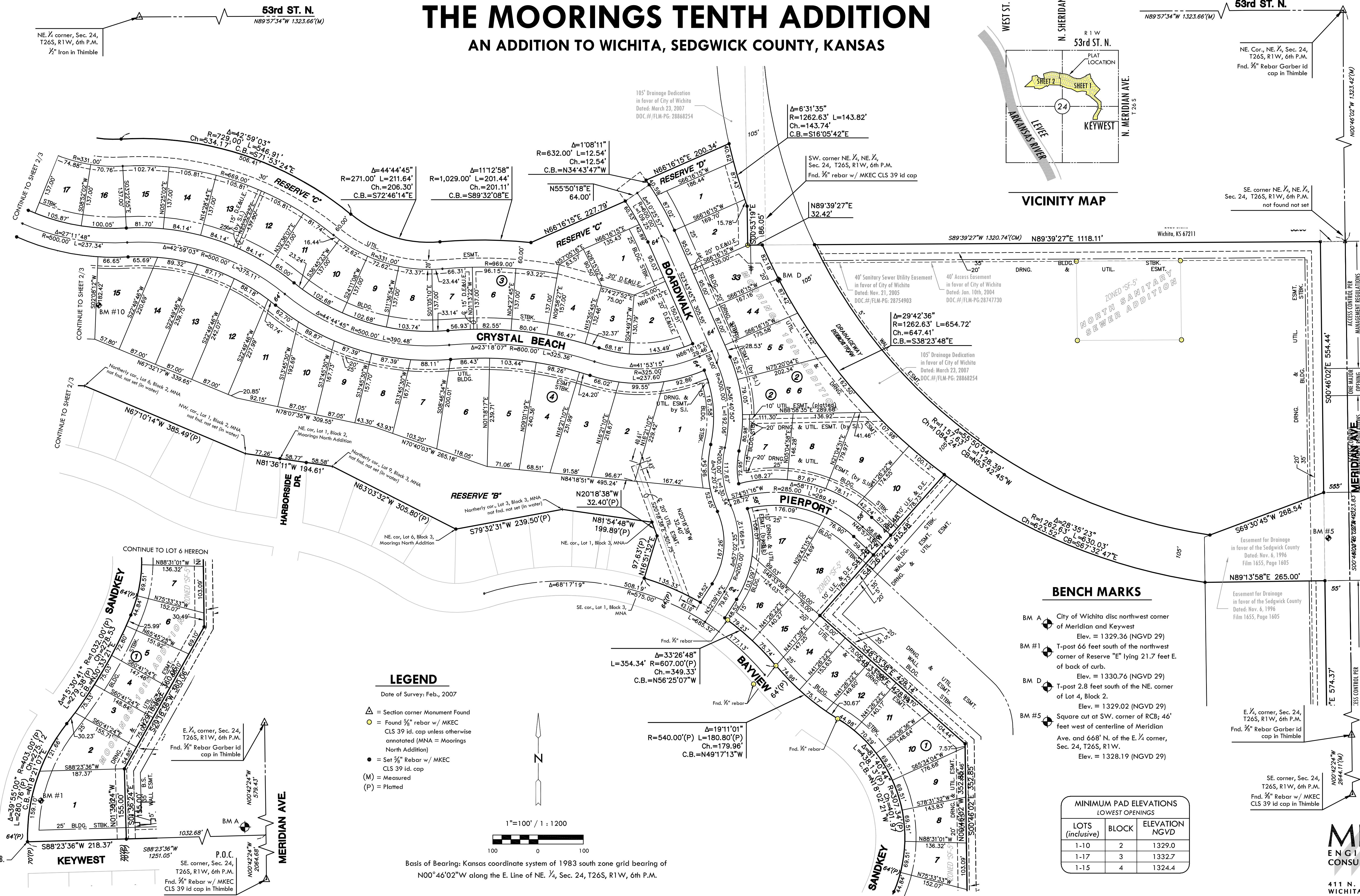
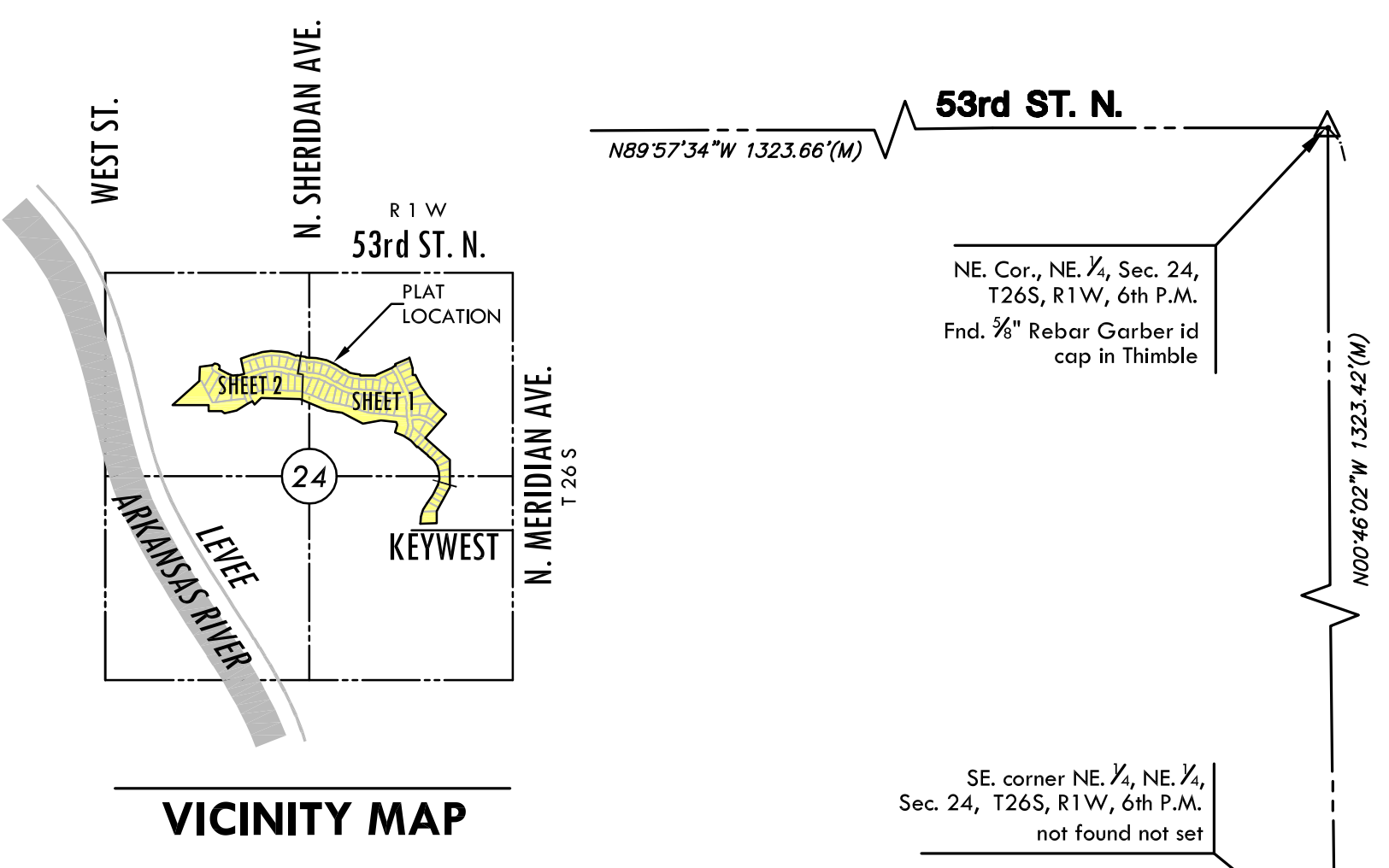


# FINAL PLAT

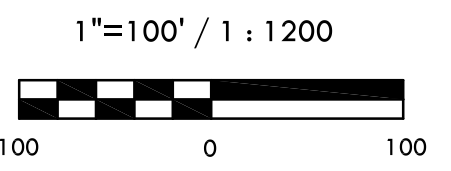
## THE MOORINGS TENTH ADDITION

### AN ADDITION TO WICHITA, SEDGWICK COUNTY, KANSAS



#### LEGEND

- Date of Survey: Feb., 2007
- $\Delta$  = Section corner Monument Found
  - $\circ$  = Found  $\frac{3}{8}$ " rebar w/ MKEC CLS 39 id. cap unless otherwise annotated (MNA = Moorings North Addition)
  - $\bullet$  = Set  $\frac{3}{8}$ " Rebar w/ MKEC CLS 39 id. cap
  - (M) = Measured
  - (P) = Platted



Basis of Bearing: Kansas coordinate system of 1983 south zone grid bearing of  $N00^{\circ}46'02''W$  along the E. Line of NE  $\frac{1}{4}$ , Sec. 24, T26S, R1W, 6th P.M.

#### BENCH MARKS

- BM A  $\Delta$  City of Wichita disc northwest corner of Meridian and Keywest  
Elev. = 1329.36 (NGVD 29)
- BM #1  $\Delta$  T-post 66 feet south of the northwest corner of Reserve "E" lying 21.7 feet E. of back of curb.  
Elev. = 1330.76 (NGVD 29)
- BM D  $\Delta$  T-post 2.8 feet south of the NE. corner of Lot 4, Block 2.  
Elev. = 1329.02 (NGVD 29)
- BM #5  $\Delta$  Square cut at SW. corner of RCB; 46' feet west of centerline of Meridian Ave. and 668' N. of the E.  $\frac{1}{4}$  corner, Sec. 24, T26S, R1W.  
Elev. = 1328.19 (NGVD 29)

MINIMUM PAD ELEVATIONS LOWEST OPENINGS		
LOTS (inclusive)	BLOCK	ELEVATION NGVD
1-10	2	1329.0
1-17	3	1332.7
1-15	4	1324.4



411 N. WEBB ROAD  
WICHITA, KS. 67206  
316-684-9600