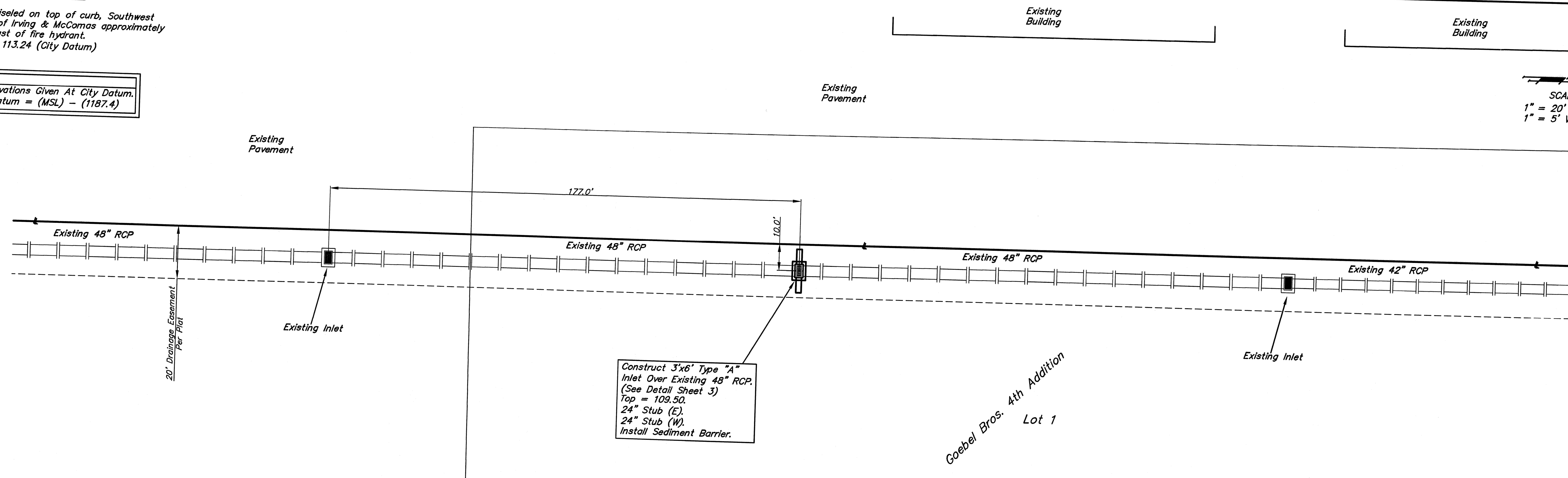


**Bench Marks:**

"□" Chiseled on top of curb, Southwest corner of Irving & McComas approximately 3 ft. East of fire hydrant. Elev. = 113.24 (City Datum)

**Note:**  
All Elevations Given At City Datum.  
City Datum = (MSL) - (1187.4)

SCALE:  
1" = 20' HORIZONTAL  
1" = 5' VERTICAL

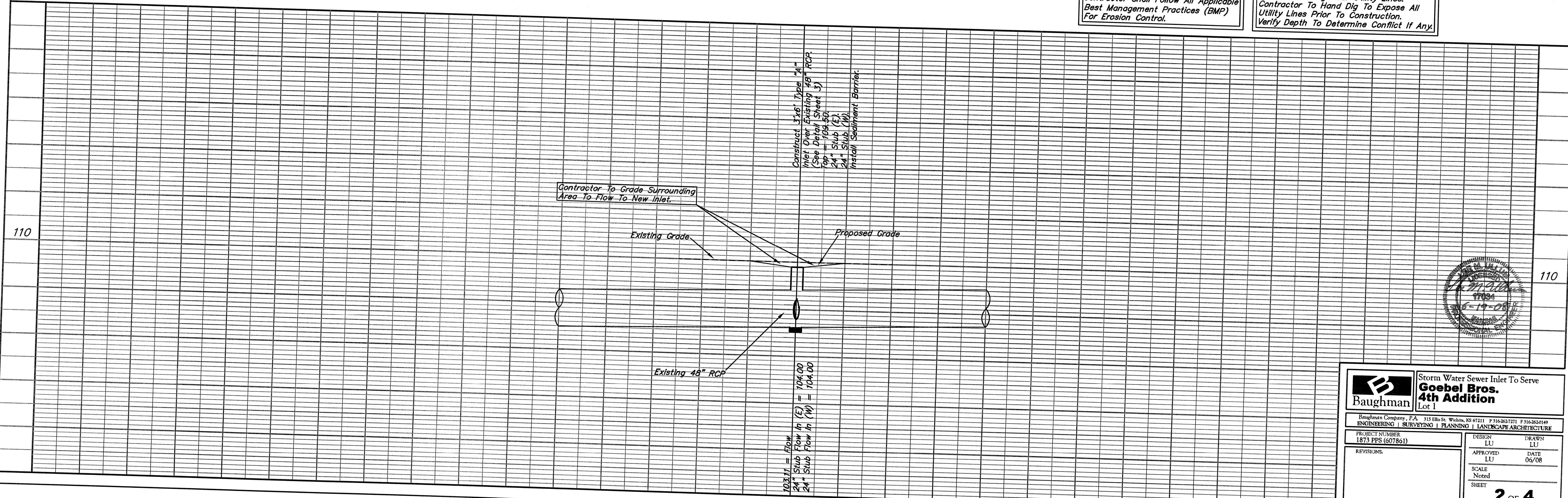


Construct 3'x6" Type "A" Inlet Over Existing 48" RCP. (See Detail Sheet 3)  
Top = 109.50.  
24" Stub (E).  
24" Stub (W).  
Install Sediment Barrier.

Goebel Bros. 4th Addition Lot 1

Contractor Shall Follow All Applicable Best Management Practices (BMP) For Erosion Control.

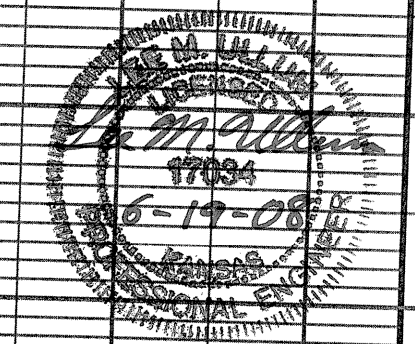
Contractor To Use Extreme Caution When Excavating Near Utility Lines. Contractor To Hand Dig To Expose All Utility Lines Prior To Construction. Verify Depth To Determine Conflict If Any.



Contractor To Grade Surrounding Area To Flow To New Inlet.

Construct 3'x6" Type "A" Inlet Over Existing 48" RCP. (See Detail Sheet 3)  
Top = 109.50.  
24" Stub (E).  
24" Stub (W).  
Install Sediment Barrier.

103.11 = Flow  
24" Stub Flow In (E) = 104.00  
24" Stub Flow In (W) = 104.00



		Storm Water Sewer Inlet To Serve <b>Goebel Bros. 4th Addition</b> Lot 1	
Baughman Company, P.A. 315 Ellis St. Wechs, MS 67211 P 316-2627211 F 316-2620149 ENGINEERING   SURVEYING   PLANNING   LANDSCAPE ARCHITECTURE			
PROJECT NUMBER 1873 PPS (607861)	DESIGN LU	DRAWN LU	
REVISIONS:	APPROVED LU	DATE 06/08	
	SCALE Noted	SHEET	<b>2 OF 4</b>
Goebel Bros. 4th Add SWS		08-04-E104	