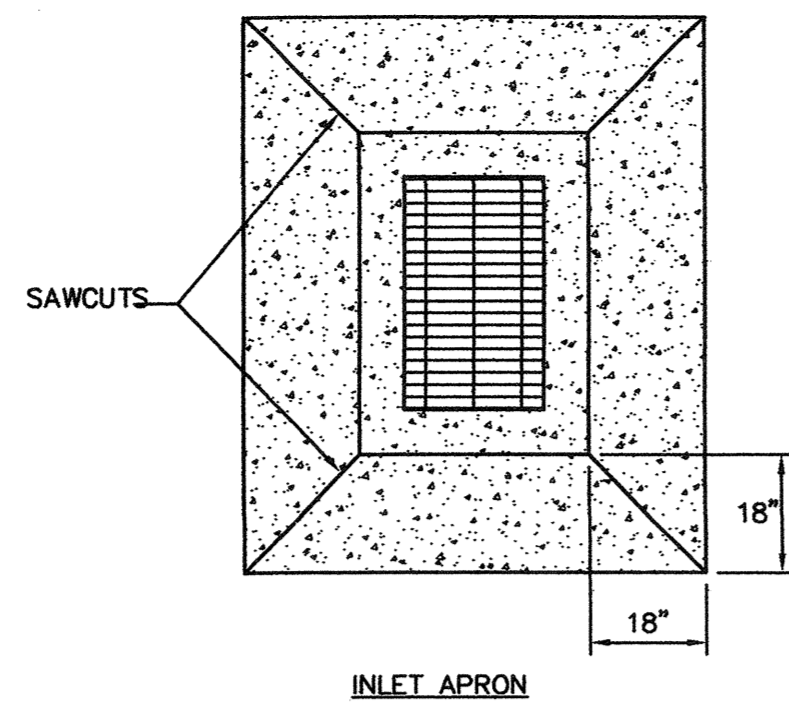
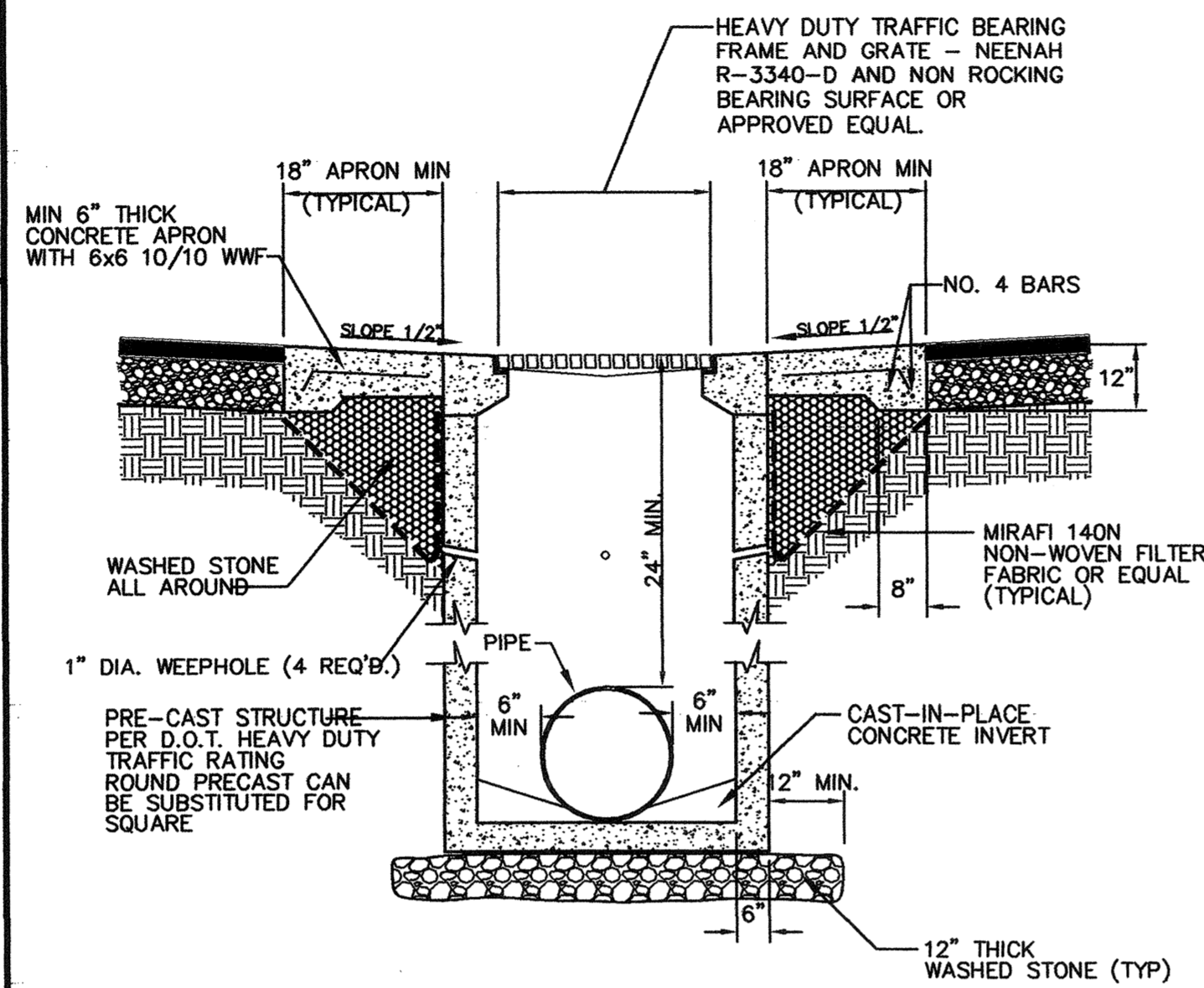


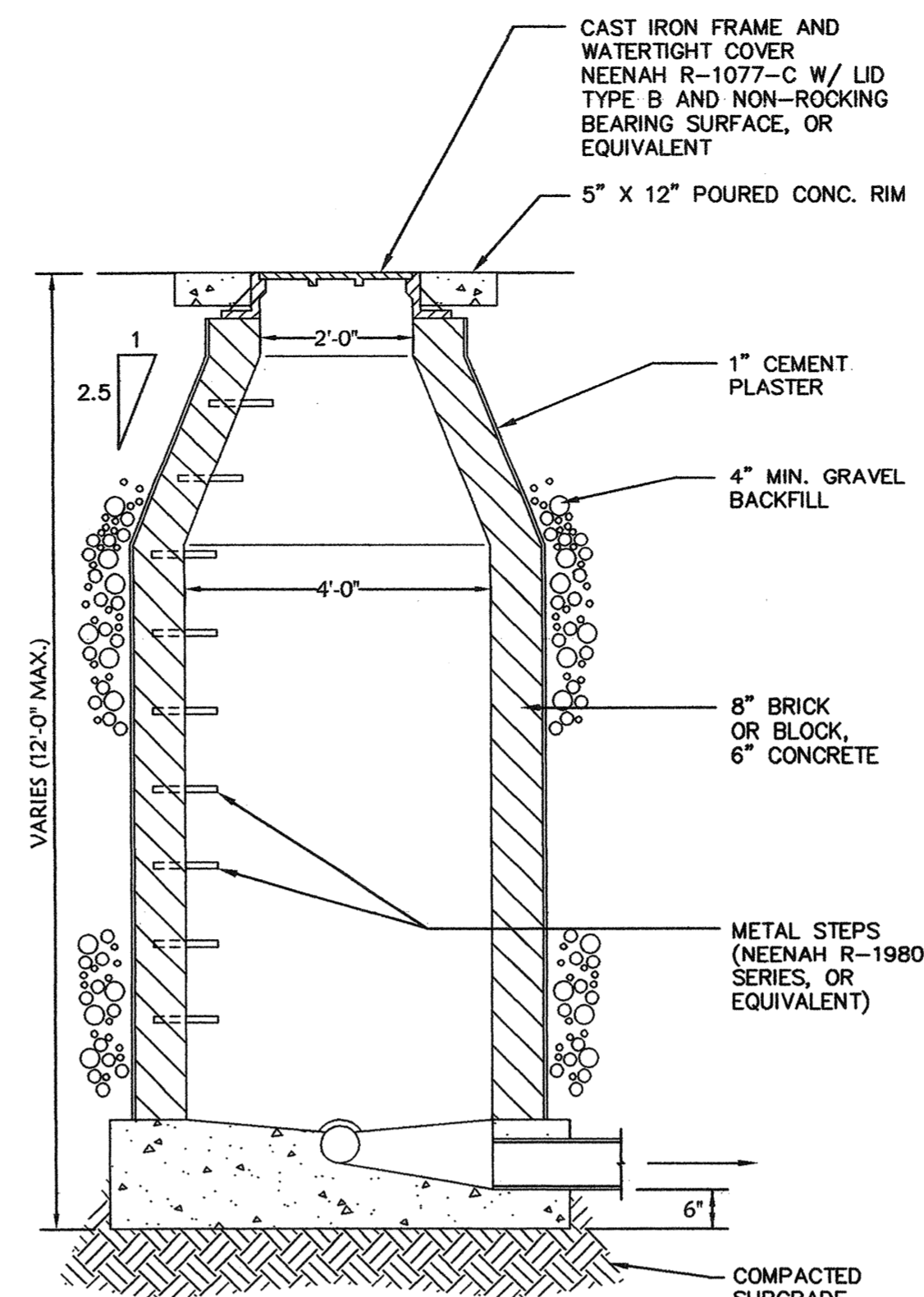
**1 CURB DRAINAGE CATCH BASIN**  
Not To Scale



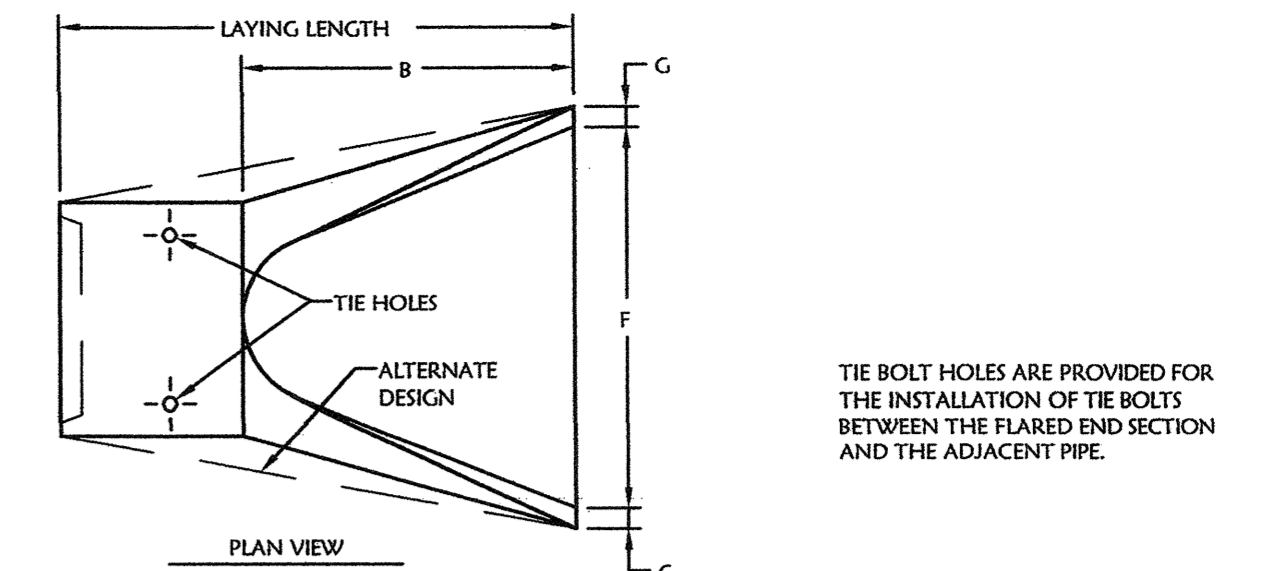
**2 CURB DRAINAGE INLET**  
Not To Scale



**3 CATCH BASIN - PAVED AREAS**  
Not To Scale



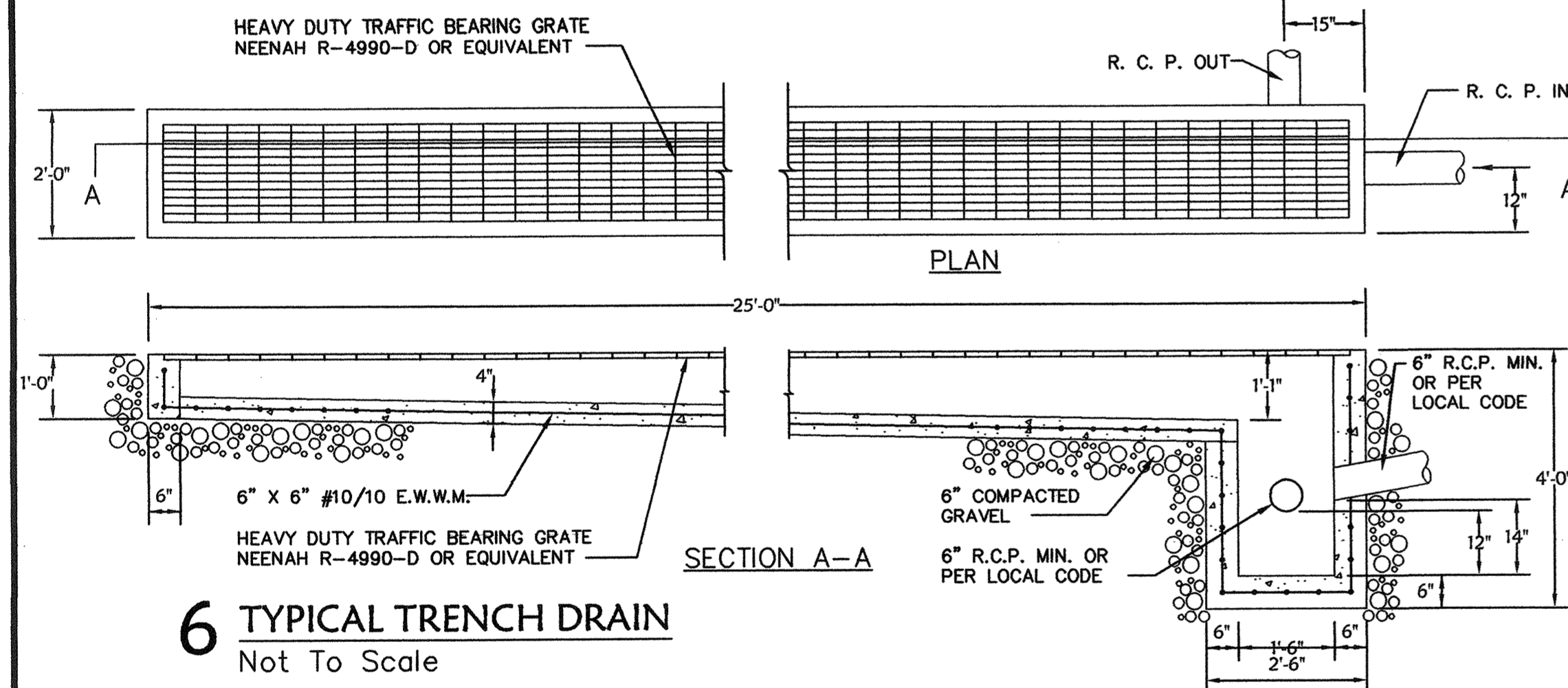
**4 TYPICAL MANHOLE**  
Not To Scale



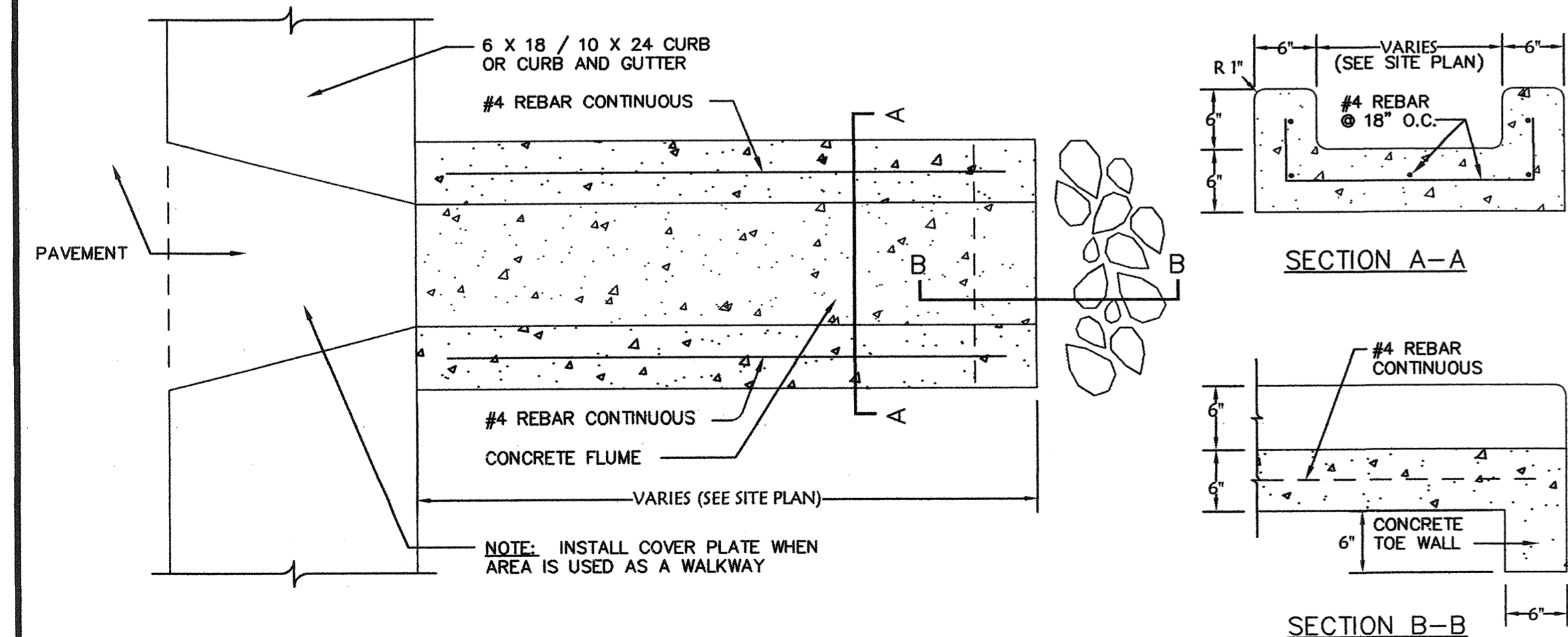
PIPE DIAMETER D INCHES	LAYING LENGTH INCHES	SLOPE X TO Y	T INCHES	A INCHES	B INCHES	F INCHES	G INCHES	WEIGHT PER SECTION LBS.
12	6'-0"	6'-0"	2.4 to 1	2	4	24	2	530
15	6'-0"	6'-0"	2.4 to 1	2 1/4	6	27	30	740
18	6'-0"	6'-0"	2.3 to 1	2 1/2	9	27	36	990

End section is manufactured in accordance with applicable portions of ASTM Specifications C76.

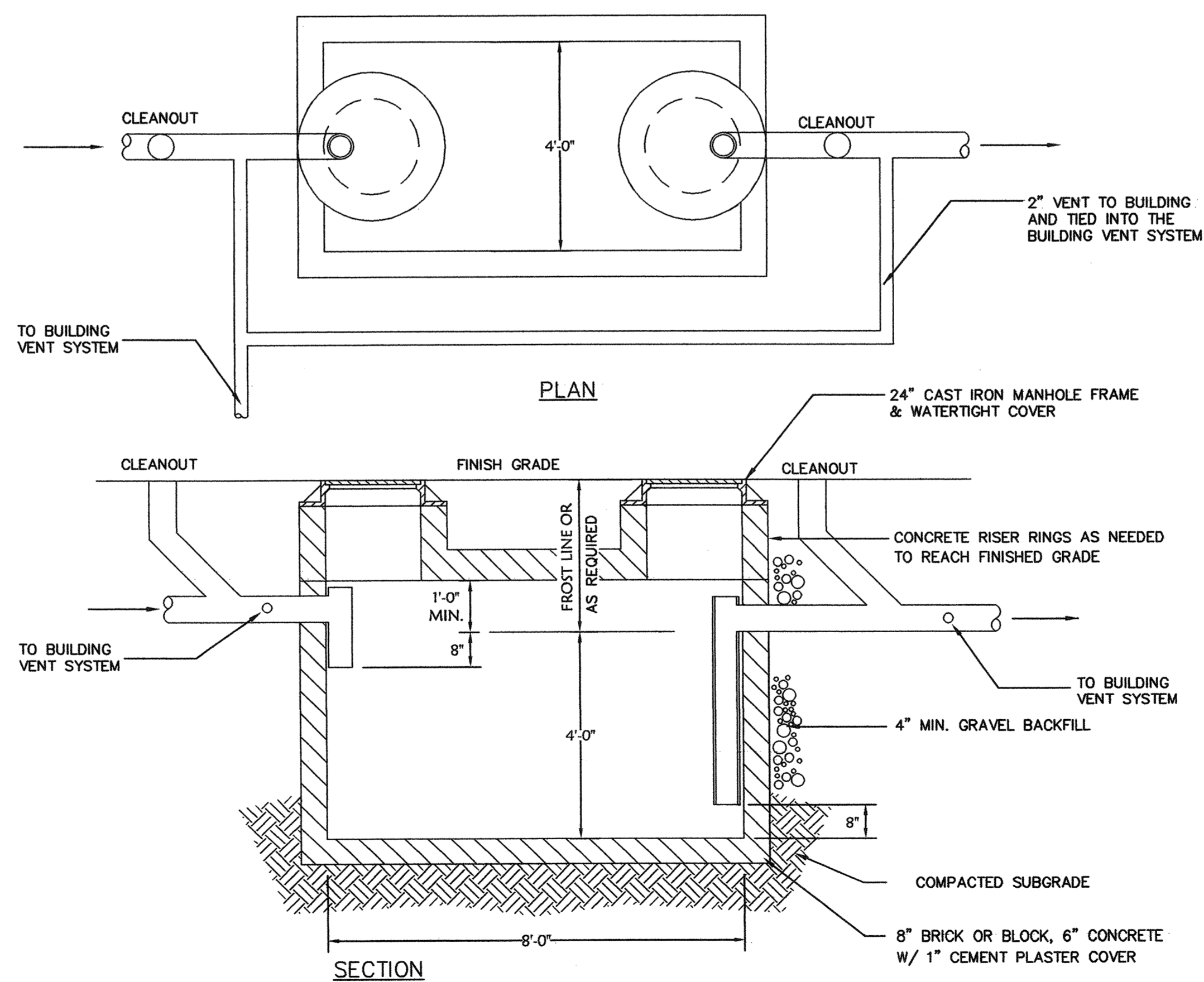
**5 NON-GASKETED PIPE FLARED END SECTIONS**  
Not To Scale



**6 TYPICAL TRENCH DRAIN**  
Not To Scale

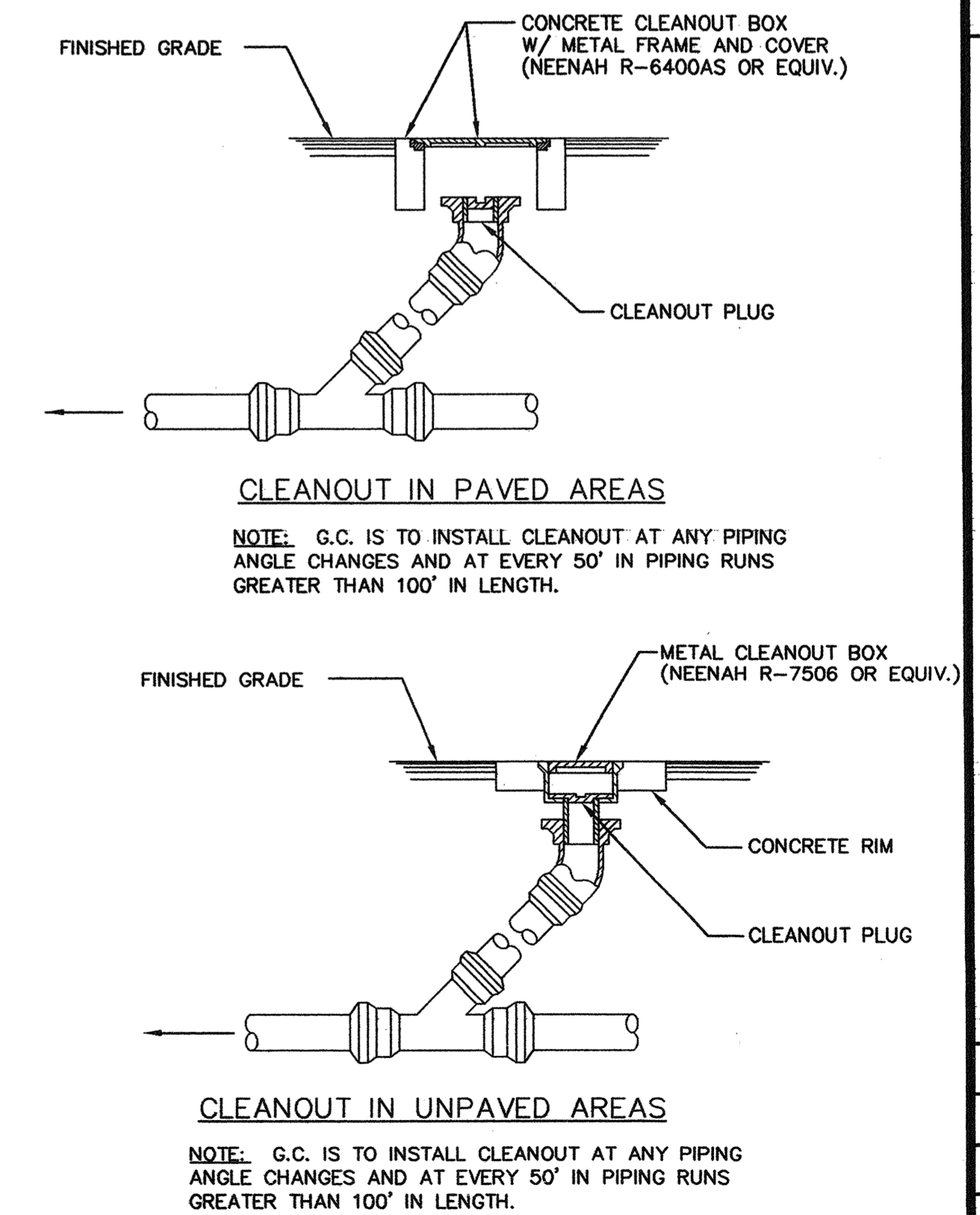


**7 CONCRETE FLUME**  
Not To Scale



NOTE: SIZE AS PER CODE LOCAL REQUIREMENTS.  
1000 GAL. PRE-CAST CONCRETE FOR REFERENCE USE IN SIZING:  
1 GALLON = .134 CUBIC FEET VOLUME OF STD. 1000 GAL. TRAP = 134± C.F.

**8 TYPICAL EXTERIOR GREASE TRAP**  
Not To Scale



**9 EXTERIOR CLEANOUT**  
Not To Scale

BY	
DESCRIPTION	
DATE	

**Zark**  
Civil Engineering Inc.  
Bentonville • Kansas City • Austin

**McDonald's**  
THESE PLANS AND SPECIFICATIONS ARE THE PROPERTY OF MCDONALD'S CORPORATION AND SHALL NOT BE REPRODUCED WITHOUT THEIR WRITTEN PERMISSION.

STATUS	DATE	BY
PRELIMINARY:	05/02/08	
PLAN CHECKED:		
AS-BUILT:		
JOB NO:	07-0738	

**SD5**