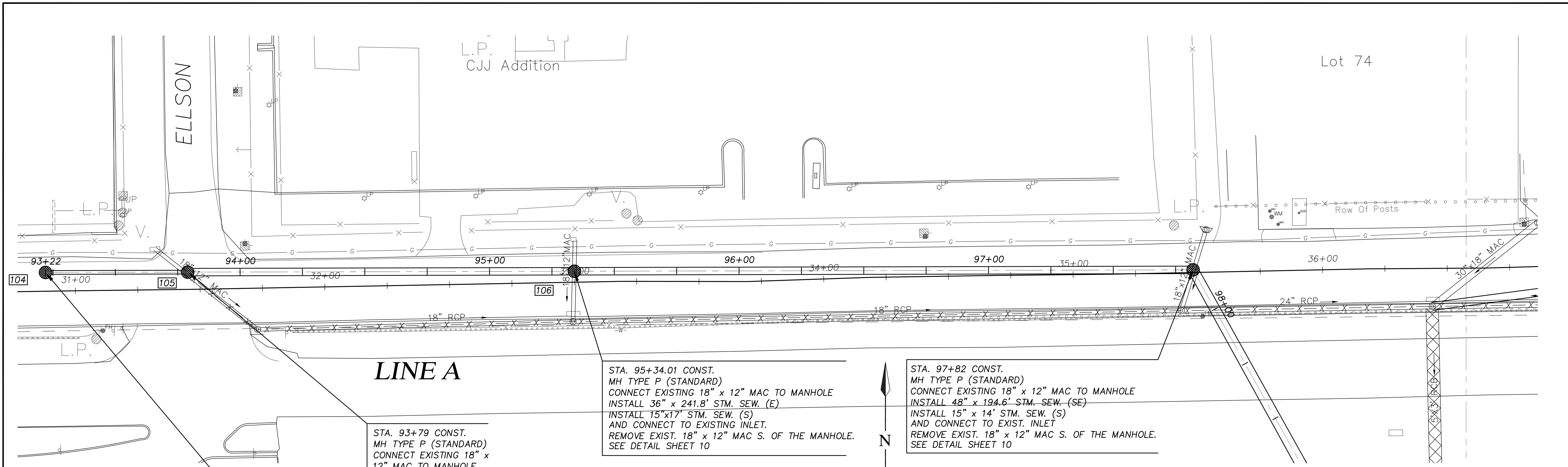


J:\2007proj\07025\DWG\07_09_PP01_STORM.dwg 8/25/2008 - 10:41am eshurford



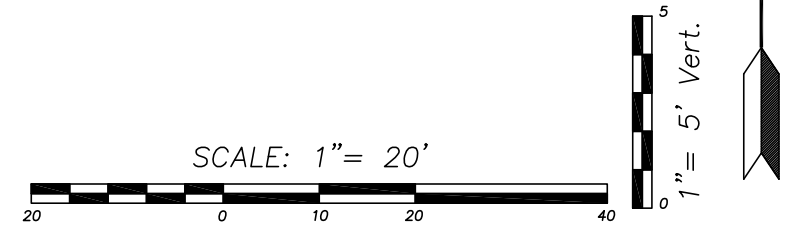
LINE A

STA. 93+22 CONST.
MH TYPE P (STANDARD)
INSTALL 18" x 52.0'
STM. SEW. (E)

STA. 93+79 CONST.
MH TYPE P (STANDARD)
CONNECT EXISTING 18" x
12" MAC TO MANHOLE
INSTALL 36" x 149.0'
STM. SEW. (E)

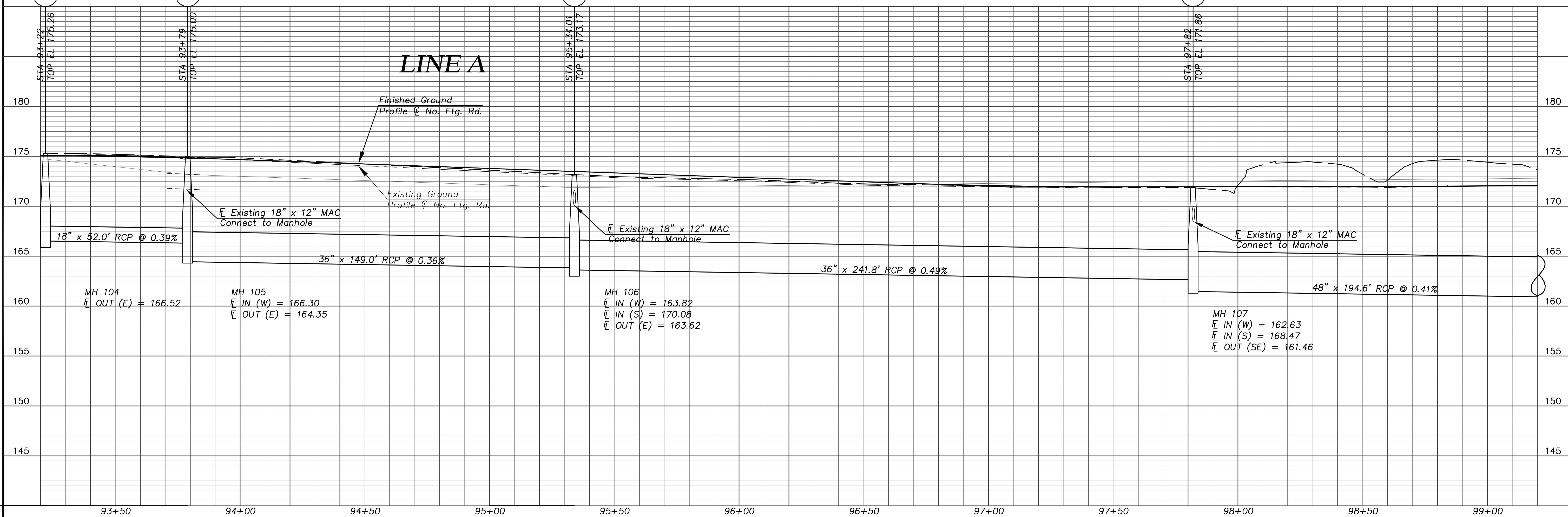
STA. 95+34.01 CONST.
MH TYPE P (STANDARD)
CONNECT EXISTING 18" x 12" MAC TO MANHOLE
INSTALL 36" x 241.8' STM. SEW. (E)
INSTALL 15"x17' STM. SEW. (S)
AND CONNECT TO EXISTING INLET.
REMOVE EXIST. 18" x 12" MAC S. OF THE MANHOLE.
SEE DETAIL SHEET 10

STA. 97+82 CONST.
MH TYPE P (STANDARD)
CONNECT EXISTING 18" x 12" MAC TO MANHOLE
INSTALL 48" x 194.6' STM. SEW. (SE)
INSTALL 15" x 14' STM. SEW. (S)
AND CONNECT TO EXIST. INLET
REMOVE EXIST. 18" x 12" MAC S. OF THE MANHOLE.
SEE DETAIL SHEET 10



LEGEND

X-X-X-X
EXISTING STORM SEWER
TO BE PLUGGED AND
ABANDONED



LINE A

No.	Date	By	Approved	Revision

CFS Cook, Flatt & Strobel
ENGINEERS, P.A.

CFS PROJECT NO:
07-025

CITY OF WICHITA, KANSAS
STORMWATER IMPROVEMENTS
ELLSON TO ZELTA

DATE: 02/01/08 DESIGNED BY: CAP DRAWN BY: JMR CHECKED BY: KKH

SHEET TITLE:
**PLAN & PROFILE
LINE A**

PROJECT NUMBER:

OFFICE
CHECK

SHEET NUMBER:
7 of 44