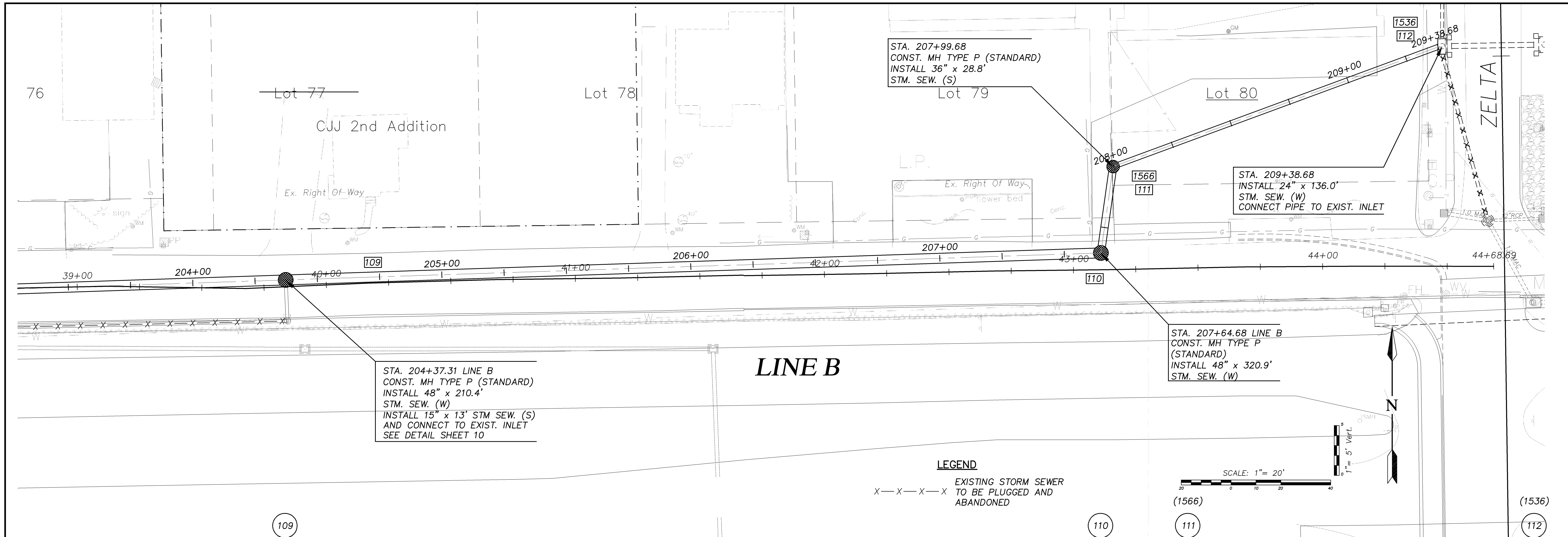


J:\2007proj\07025\dws\07_09 PP01 STORM.dwg 7/31/2008 - 10:23am jrichey



STA. 204+37.31 LINE B
 CONST. MH TYPE P (STANDARD)
 INSTALL 48" x 210.4'
 STM. SEW. (W)
 INSTALL 15" x 13' STM SEW. (S)
 AND CONNECT TO EXIST. INLET
 SEE DETAIL SHEET 10

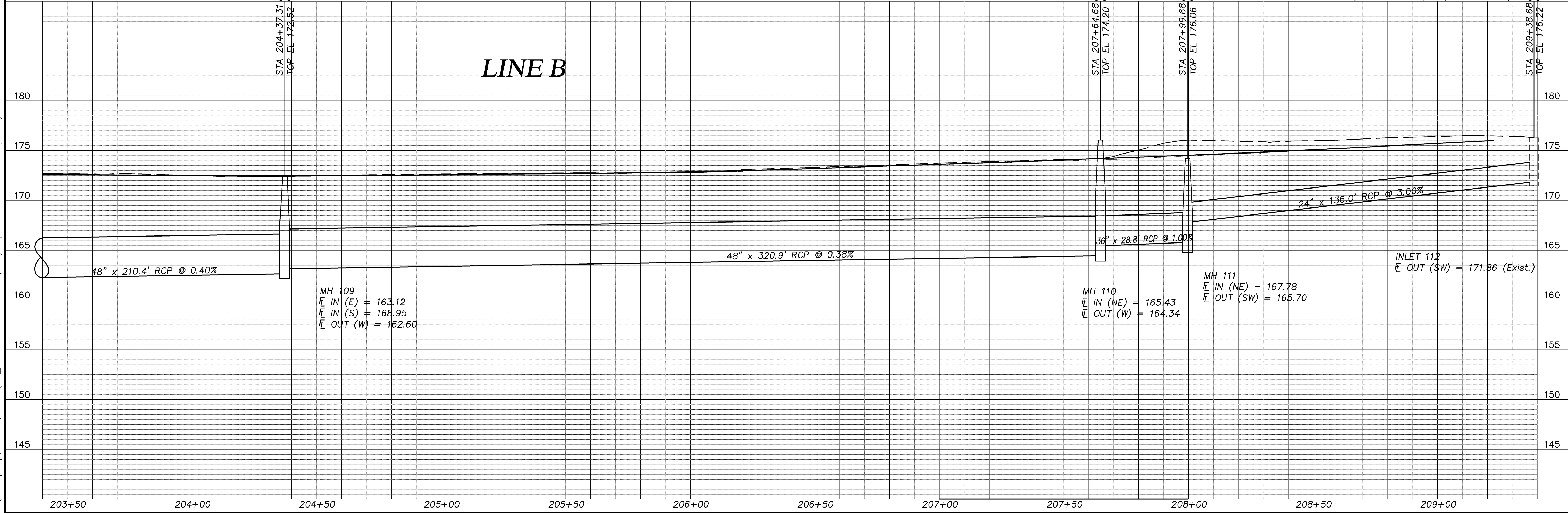
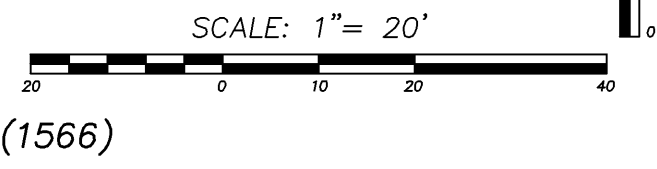
STA. 207+99.68
 CONST. MH TYPE P (STANDARD)
 INSTALL 36" x 28.8'
 STM. SEW. (S)

STA. 209+38.68
 INSTALL 24" x 136.0'
 STM. SEW. (W)
 CONNECT PIPE TO EXIST. INLET

STA. 207+64.68 LINE B
 CONST. MH TYPE P (STANDARD)
 INSTALL 48" x 320.9'
 STM. SEW. (W)

LEGEND

X—X—X—X EXISTING STORM SEWER
 TO BE PLUGGED AND
 ABANDONED



No.	Date	By	Approved	Revision
1				
2				
3				
4				

CFS Cook, Flatt & Strobel
 ENGINEERS, P.A.

CFS PROJECT NO:
 07-025

CITY OF WICHITA, KANSAS
STORMWATER IMPROVEMENTS
 ELLSSON TO ZELTA

DATE: 02/01/08 DESIGNED BY: GAP DRAWN BY: JMR CHECKED BY: KKH
 SHEET TITLE:
PLAN & PROFILE
LINE B
 PROJECT NUMBER:
OFFICE
CHECK
 SHEET NUMBER:
9 of 44