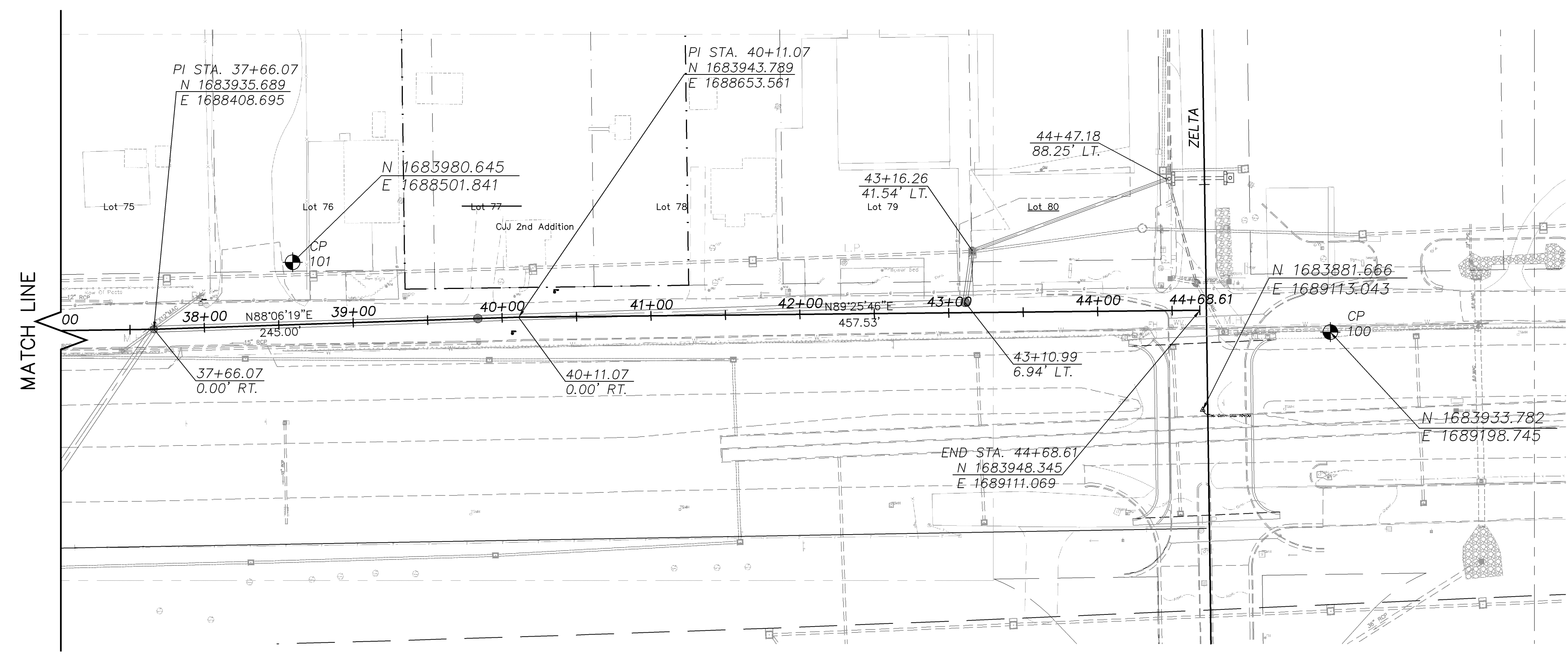
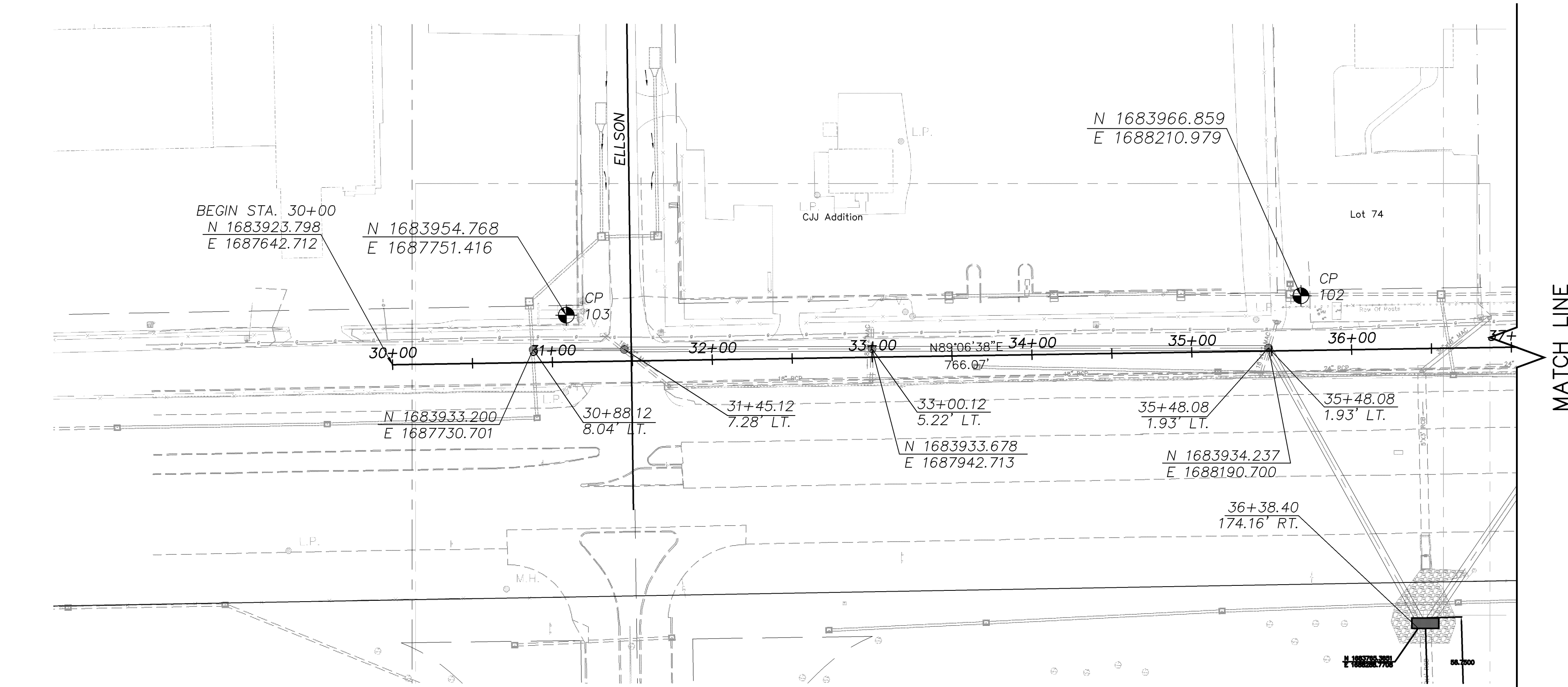


CONTROL POINT #103-  
 1. Mag Nail & Wshr. 39.00'  
 2. W. of  $\odot$  Elison St. 29.00'  
 3. N. of  $\odot$  N. Ftg. Rd. 29.00'  
 4. S.E. of  $\odot$  Face Sign Base 17.15'

CONTROL POINT #102-  
 1. Mag Nail & Wshr. 39.00'  
 2. W. of  $\odot$  Ent. Carkansas Inc. 33.00'  
 3. N. of  $\odot$  N. Ftg. Rd. 33.00'  
 4. S.W. of Top Key F.H. 53.82'



CONTROL POINT #101-  
 1. Set 1/2" x 24" Rebar w/Red Plastic Cap  
 2. N.W. of Top Gd Fc. Post 38.02'  
 3. N. of  $\odot$  N. Ftg. Rd. 18.50'  
 4. N.W. of S.W. Top Gd. Fc. Post 40.79'

CONTROL POINT #100-  
 1. Set 1/2" x 24" Rebar w/Red Plastic Cap  
 2. Spk. & Wshr. In Side Gd. Fc. Post 3.31'  
 3. E. of  $\odot$  Zelta 87.00'  
 4. S. of  $\odot$  N. Ftg. Rd. 15.50'

REVISED  
 \_\_\_\_\_  
 \_\_\_\_\_  
 \_\_\_\_\_

SEAL:  
 \_\_\_\_\_  
 \_\_\_\_\_

CITY OF WICHITA, KANSAS  
**STORMWATER IMPROVEMENTS**  
 ELLISON TO ZELTA

**CFS**  
 Cook, Flatt & Strobel  
 ENGINEERS, P.A.

CFS PROJECT NO:  
 07-025

DESIGNED BY: \_\_\_\_\_ CHECKED BY: \_\_\_\_\_  
 DATE: \_\_\_\_\_ DRAWN BY: \_\_\_\_\_

SHEET TITLE:  
**GEOMETRIC LAYOUT**

PROJECT NUMBER

OFFICE CHECK

SHEET NUMBER:  
**11 of 44**

CFS PROJECT FILE: