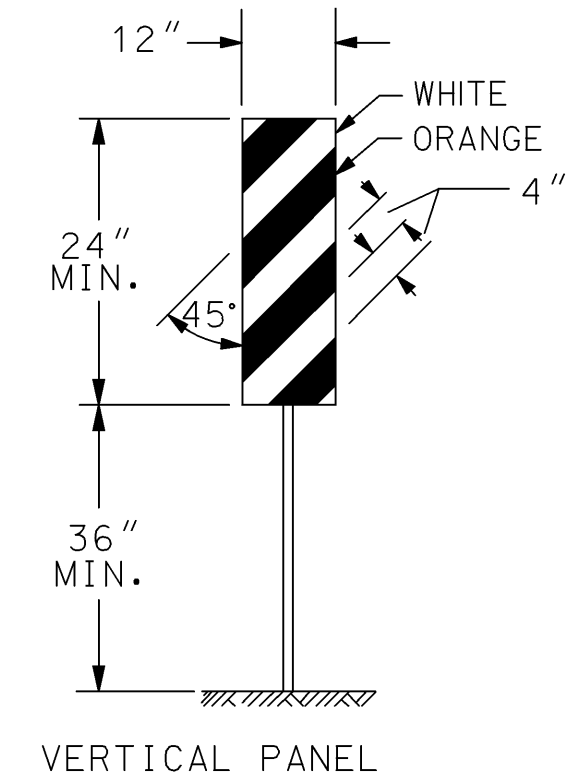
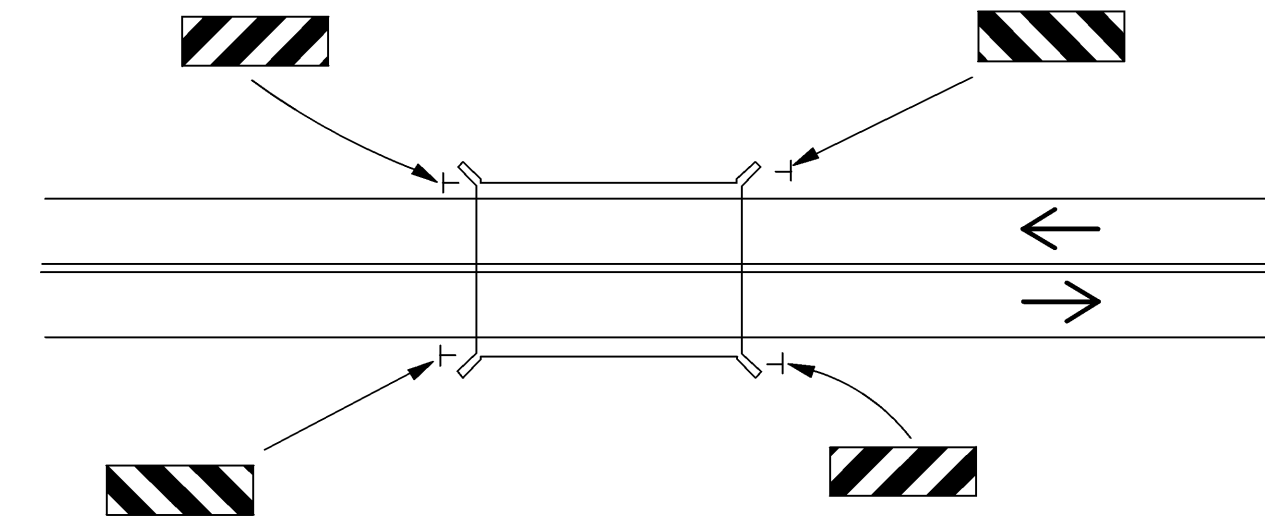


REFER TO STD. TE710 FOR ADDITIONAL INFORMATION ON TEMPORARY TRAFFIC CONTROL SIGNS AND SIGN SPACING.
 REFER TO STD. TE704 FOR TYPE III BARRICADES.
 REFER TO STD. TE702 FOR INFORMATION ON TAPERS AND CHANNELIZING DEVICES.
 REFER TO STD. TE700 FOR LENGTH OF BUFFER SPACE.



VERTICAL PANEL

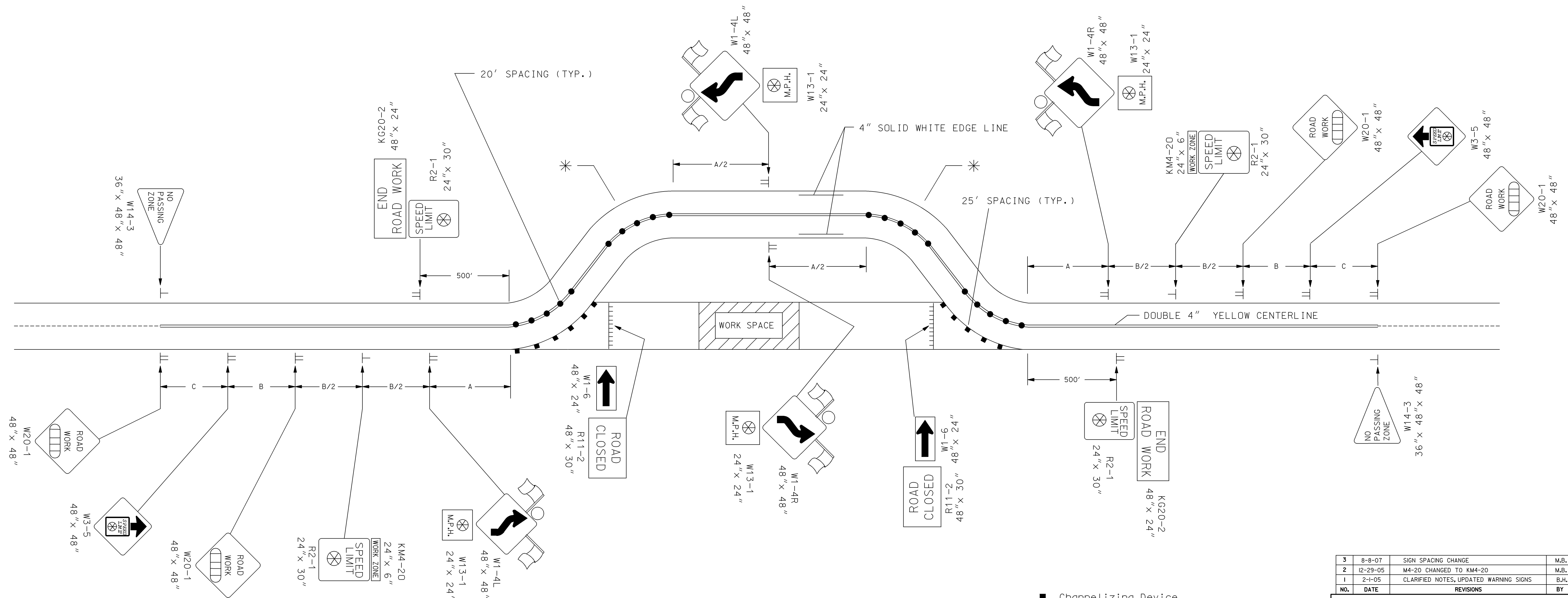
TYPICAL TEMPORARY STRUCTURE END TREATMENT ON SHOOFLY



THE ENTIRE AREA OF VERTICAL PANELS SHALL HAVE ASTM TYPE III SHEETING. THE STRIPES SHALL SLOPE DOWNWARD TO THE TRAFFIC SIDE FOR CHANNELIZING.

*Note: Black on Orange 24" x 30" Chevron signs (W1-8) shall be mounted back to back on the outside edge of shoofly curves with a radius of 1000' or less at the spacing shown below. A Minimum of 3 chevrons should be installed per curve.

| SUGGESTED CHEVRON SPACING | |
|---------------------------|--------------|
| CURVE RADIUS | MAX. SPACING |
| 1000' - 800' | 100' |
| 800' - 450' | 80' |
| LESS THAN 450' | 60' |



- Channelizing Device
- ▬ Type III Barricades
- Bi-directional Temp. Raised Pavement Marker (Type I)
- ⊞ AHEAD, 1500 FT. OR 1 MILE
- ⊗ Speed To Be Determined By The Engineer
- Type "A" Low Intensity Warning Light

Plotted By : JR
 Plot File : *****DGN*****
 Plot Date : 9/26/2008

| NO. | DATE | REVISIONS | BY | APP'D |
|-----|----------|--|------|--------|
| 3 | 8-8-07 | SIGN SPACING CHANGE | M.B. | A.A.A. |
| 2 | 12-29-05 | M4-20 CHANGED TO KM4-20 | M.B. | A.A.A. |
| 1 | 2-1-05 | CLARIFIED NOTES, UPDATED WARNING SIGNS | B.H. | A.A.A. |

KANSAS DEPARTMENT OF TRANSPORTATION
 TYPICAL TRAFFIC CONTROL
 SHOOFLY DIVERSION

TE736 9/1/00

| | | | |
|------------|------------|------------|----------------------|
| DESIGNED | B.A.H. | APP'D | Anthony A. Alrobolre |
| DETAILED | B.A.H. | QUANTITIES | TRACED |
| DESIGN CK. | DETAIL CK. | QUAN. CK. | TRACE CK. |