

STREET PAVING FOR 127TH ST. E. to serve **WOODS NORTH ADDITION**

127th St. E. from the existing pavement north to the north line of Woodspring

CITY OF WICHITA, KANSAS

James L. Armour, P.E. City Engineer

Project Number

472-84653

O.C.A. Number

766196

GENERAL NOTES:

- Contractor will be required to provide notice to utility companies a minimum of forty-eight (48) hours prior to any excavation, as follows:

Kansas One-Call 687-2470

The Contractor must notify the following in case of an emergency:

Cox Communications 262-4270
Kansas Gas Service 1-888-482-4950
Westar Energy 383-8650
Aquila Energy 1-800-303-0357
AT&T 268-2245
City of Wichita Water Dept. 268-4563
City of Wichita Sewer Maint. 268-4024
City of Wichita Storm Sewer Maint. 268-4090
Conoco Phillips Pipeline Co. 268-4034
Sedgwick County Public Works 1-877-267-2290 383-7901
Butler Co. RWD #5 778-1631
- Utility service lines, poles, valve boxes, meters, and etcetera are to be adjusted as necessary by others prior to construction unless the plans specifically call for their adjustment by the Contractor or unless the plans specifically identify a utility to be adjusted by its owner during construction. Existing utilities and their location, as shown on the plans, represent the best information obtainable for design. The Contractor will be required to work around existing utilities within the right-of-way which do not conflict with proposed construction.
- Rubble from the removal of miscellaneous structures and excess excavation which is to be wasted shall be disposed of on sites to be provided by the Contractor. These sites shall be approved by the Engineer as to suitability, appearance and site location. Locations, in the opinion of the Engineer, that will leave an unsightly appearance will not be approved. All disposal sites must be approved by the Kansas Department of Health and Environment. Material either stockpiled or disposed of in a flood plain would require a Kansas State Board of Agriculture permit. Any material dumped in waters of the United States or wetlands is subject to U.S. Corps. of Engineers permitting regulations. Any material buried or stockpiled beyond approved construction limits would require additional archaeological investigations unless buried in a previously approved borrow location.
- Trees and shrubs in public right-of-way which are in direct conflict with proposed new construction shall be removed by the Contractor with the Engineer's approval. Trees and shrubs which are not in direct conflict with proposed new construction shall be saved and protected from damage.
- The Contractor shall give all property owners and/or tenants of developed property abutting the construction of this project a minimum of ten (10) days notice prior to start of construction.
- The Contractor shall be responsible for preserving property irons. The Contractor will be required to re-establish any property irons which are damaged or destroyed by his construction operations. Such irons shall be re-established by a licensed land surveyor in accordance with state laws.
- All existing and proposed erosion control measures including silt fencing, erosion control mat, straw bales, inlet barriers, and const. entrance shall be maintained throughout construction by the contractor and until project is accepted by the City of Wichita. The on-site engineer shall complete weekly reports on the status of erosion control measures. The contractor shall be required to comply with maintenance and/or replacement of erosion control measures as determined by the on-site engineer until project is accepted by City of Wichita. Maintenance and/or replacement of erosion control measures to be paid by L.S. bid item "Site Clearing & Restoration".
- A saw cut of at least one-half the depth of existing surface courses or one-fourth the depth of the existing total pavement thickness shall be provided at locations where proposed construction abuts the existing surface course or pavement for which partial removal of that surface or pavement is required. Sawed joint to facilitate removal within three (3) feet of existing joints will not be permitted and for such instances the limits of removal shall extend to the existing joint. Such saw cuts will not be paid for directly and this cost shall be considered as subsidiary to the removal of the surface or pavement.
- Limits of earthwork shall match existing ground elevations at the right-of-way line unless otherwise noted on the plans with a new finished grade elevation. When a new finished grade elevation is shown, the earthwork shall extend one foot beyond the right-of-way line and then slope up or down using permissible slopes to match the existing ground surface.
- All areas disturbed during construction shall be seeded, mulched, and fertilized as follows (Permanent Seeding):
Seed: Kansas Premium Fescue Blend: 8 lbs./1000 sq. ft.
Annual Rye Grass: 4 lbs./1000 sq. ft.
Mulch: Prairie Hay: 2 tons/acre
Fertilizer: 12-24-12: 850 lbs./acre
All costs associated with seeding, mulching, and fertilizing shall be included in bid item "Project Seeding." All seeding operations shall conform to City of Wichita Standard Specifications.
- The developer for this project is Ritchie Development Corporation, Rob Ramseyer, Vice-President 684-7300.
- Contractor shall coordinate construction with City of Wichita paving project 472-84651.
- The Contractor shall protect traffic by use of proper and necessary flags, lights, signals, barricades or other warning devices as needed, all in accordance with the latest edition of the Manual On Uniform Traffic Control Devices, U.S. Department of Transportation, Federal Highway Administration. Cost to be included in lump sum bid item "Traffic Control."
- Contractor shall locate and repair all soft spots in the proposed subgrade. Contractor shall overexcavate and re-compact these areas as required to maintain compaction of 95% Standard Proctor Density. Cost to be incidental to pavement.
- All construction material shall meet KDOT Standard Specifications or Sedgwick County Special Provisions.
- Contact engineer for availability and location of contractor borrow.

Benchmark

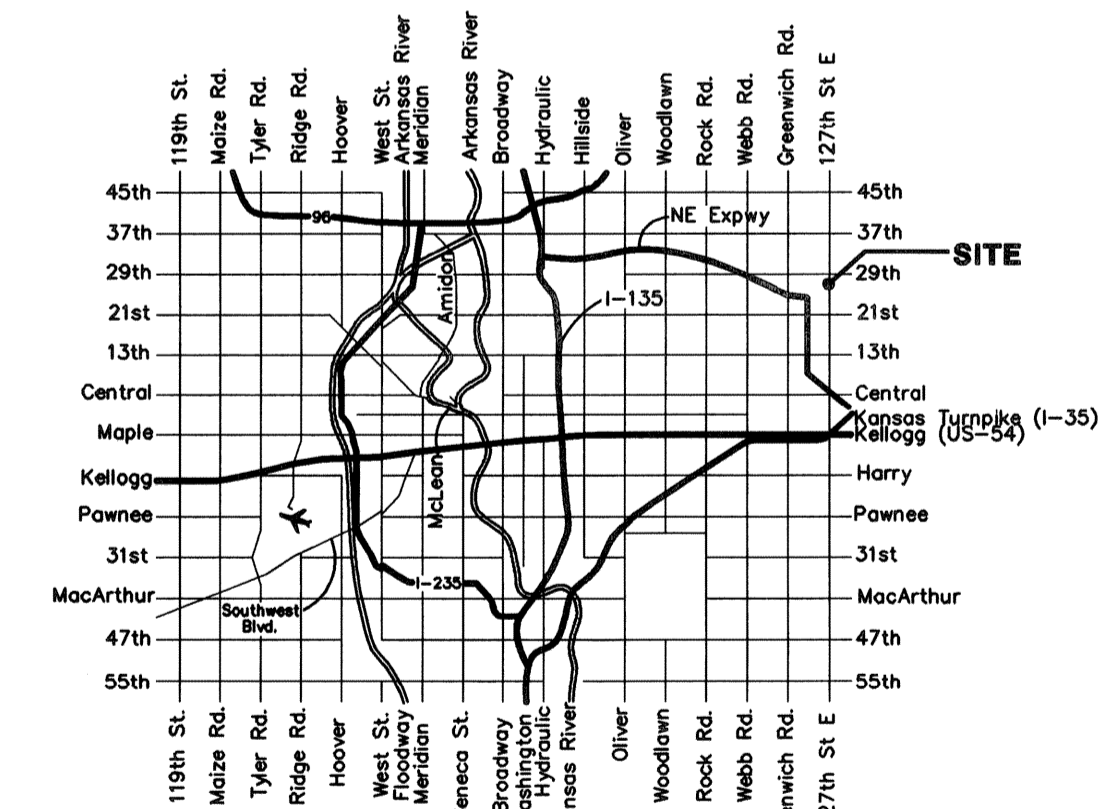
CROSS CUT ON NORTH
END OF WEST HEADWALL
137.5' SOUTH & 12' WEST
OF THE INTERSECTION OF
29TH ST N & 127TH ST E.
ELEV. = 1382.45 NAVD88

@ OF WEST EDGE OF
CONCRETE DRIVE 31.4' NE
OF THE EAST 1/4 CORNER
OF SEC. 3, TWP 27-S,
R-2-E.
ELEV. = 1373.82 NAVD88

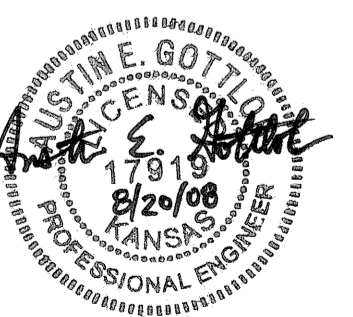
Sheet Index

Title Sheet	1
Pvmt. Details	2
127th Street East	3
Sign Details	4-6
Traffic Control Details	7-9
Coordinate Sheet	10
Street X-Sections	11
Copy of Plat	12

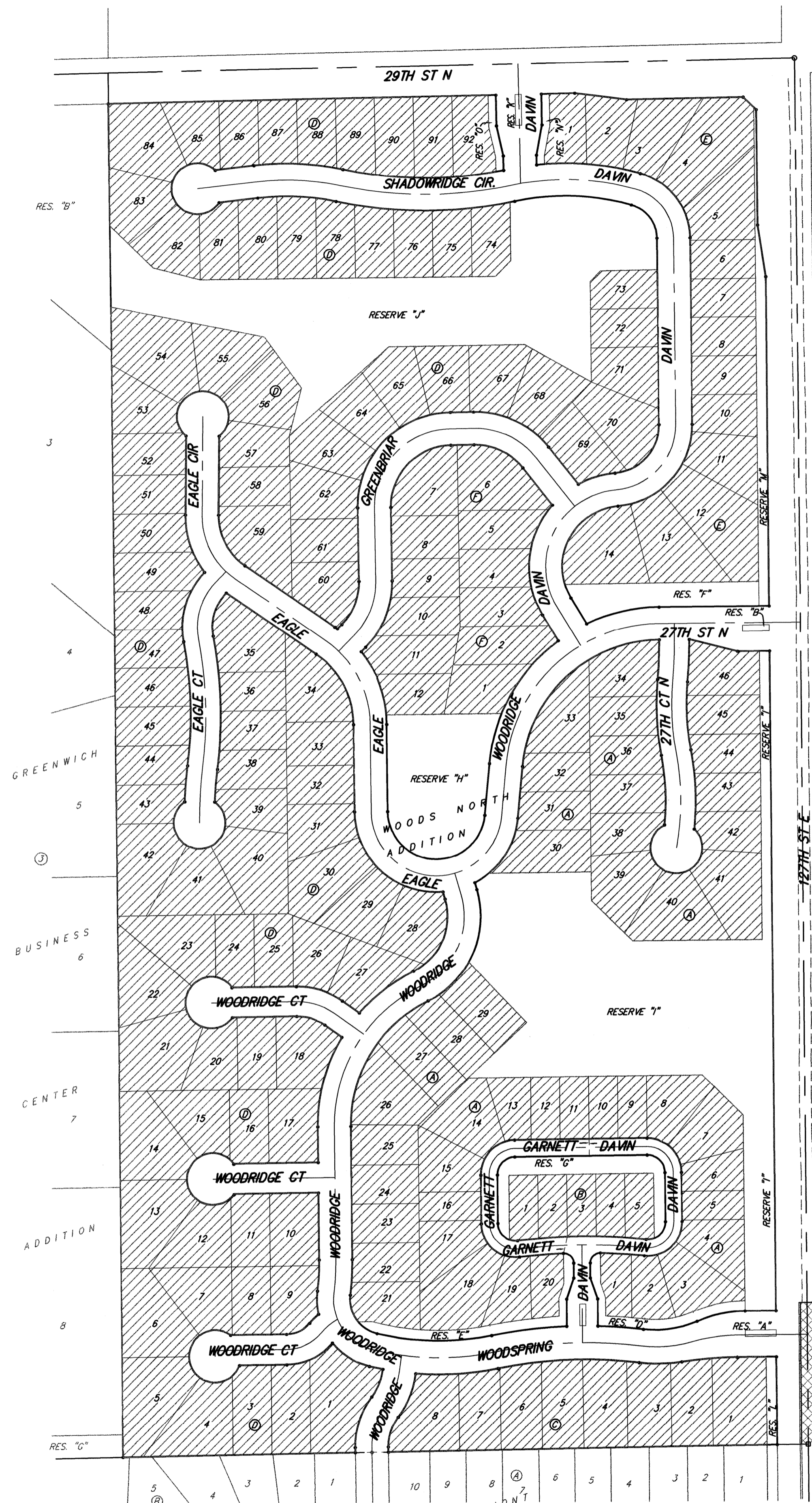
Project Earthwork Totals	
Excavation	= 22 C.Y.
Loose Fill	= 4 C.Y.
Compacted Fill	= 254 C.Y.
Borrow Exc.	= 291 C.Y.
Total Project Length	
271 L.F.	= 0.05 Miles



Vicinity Map



Baughman Company, P.A. 315 Ellis St. Wichita, KS 67211 P 316-262-7271 F 316-262-0145
ENGINEERING | SURVEYING | PLANNING | LANDSCAPE ARCHITECTURE



Scale: 1" = 150'

Benefit District

Proposed Streets