

FHWA REGION NO.	STATE	PROJECT NUMBER	FISCAL YEAR	SHEET NUMBER	TOTAL SHEETS
	KANSAS	TE 0234 01		12	69

**CURVE DATA:**

C27 D=68'44"19"  
R=35.00'  
L=26.35'

N: 22697.20 E: 20007.13 P.V.I.  
BL. STA. 37+53.91 13.0' RT.

N: 22973.73 E: 20113.92 P.V.I.  
BL. STA. 40+50.34 15.45' RT.

END 6" BLACK VINYL COATED  
CHAIN LINK FENCE  
N: 22962.13 E: 200941.11  
BL. STA. 40+32.50 LT.

N: 22962.56 E: 20107.09 P.C.  
BL. STA. 40+37.47 13.0' RT.

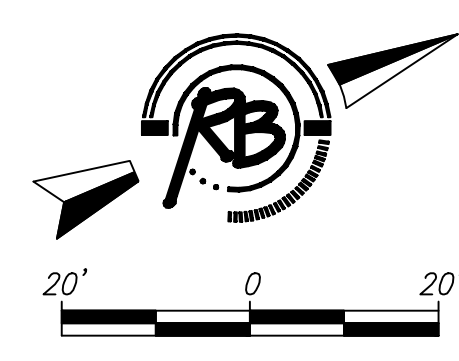
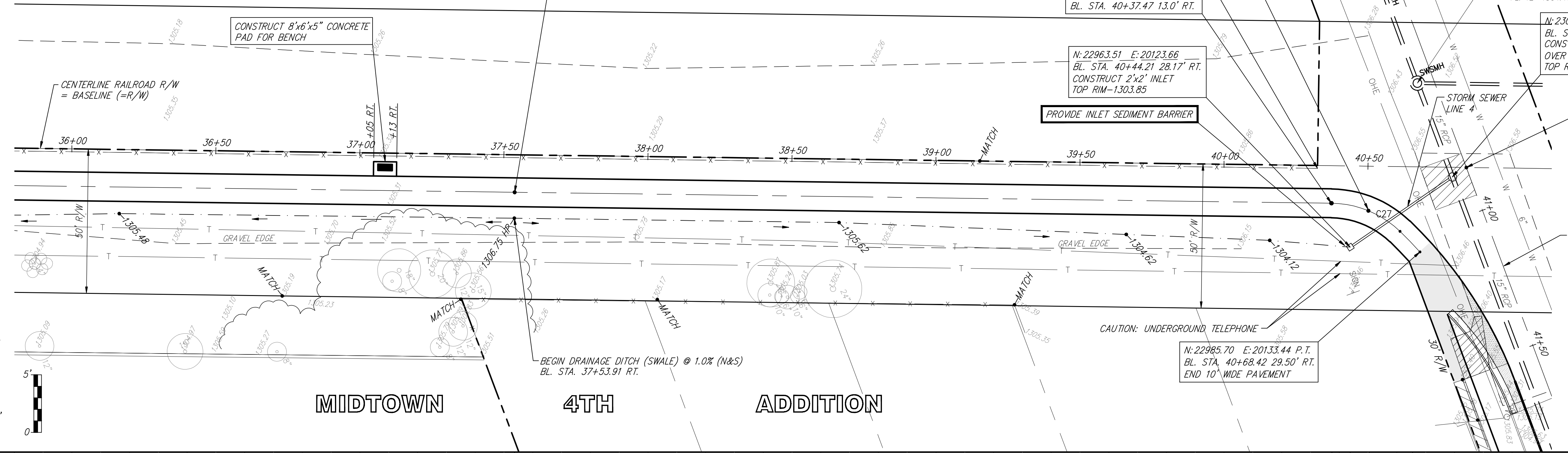
N: 22963.51 E: 20123.66  
BL. STA. 40+44.21 28.17' RT.  
CONSTRUCT 2'x2' INLET  
TOP RIM=1303.85

PROVIDE INLET SEDIMENT BARRIER

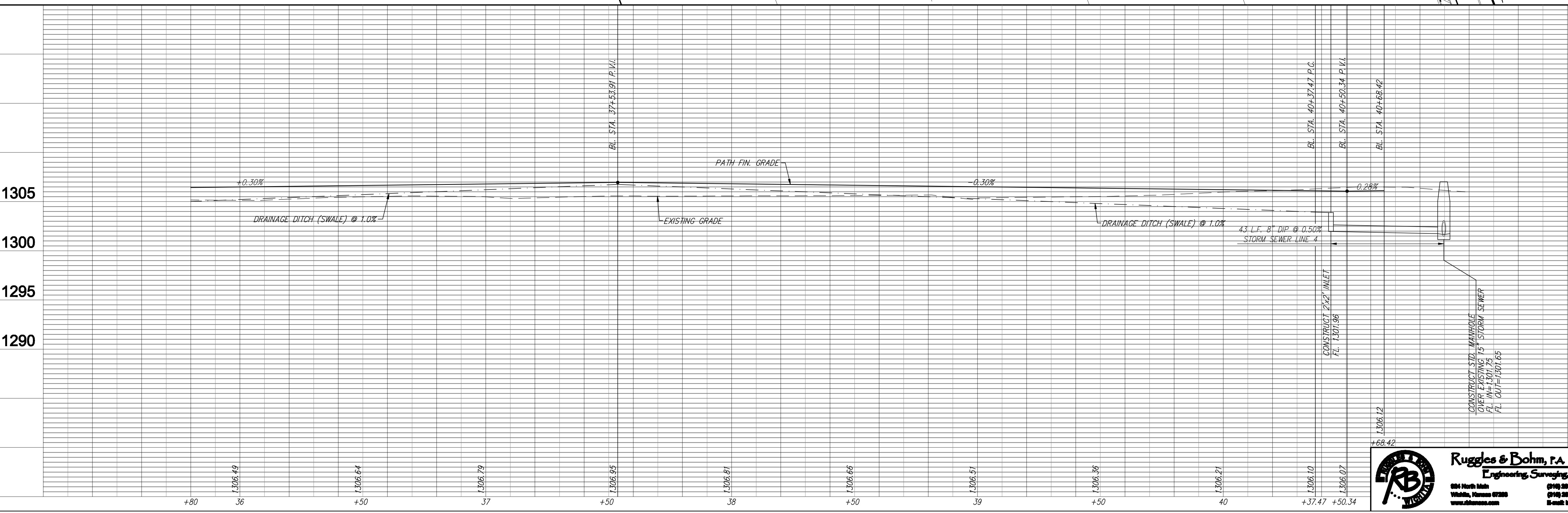
N: 22985.70 E: 20133.44 P.T.  
BL. STA. 40+68.42 29.50' RT.  
END 10' WIDE PAVEMENT

N: 23005.14 E: 20112.83  
BL. STA. 40+79.34 3.36' RT.  
CONSTRUCT STD. MANHOLE  
OVER EXIST. 15" STORM SEWER.  
TOP RIM=1306.63 MATCH

BL. STA. 40+84.15  
N: 23010.82  
E: 20111.38



- REMOVE PAVEMENT
- 5" CONCRETE
- REMOVE AND REPLACE WITH 8" REINF. CONC.



**PLAN & PROFILE**  
**MIDTOWN BIKEPATH**  
**WICHITA, KANSAS**

Project No. 472-84008  
Engineering Base (SH 93)

DATE: May 16, 2008

DESIGNED BY: EUB  
CHECKED BY: TCR  
DATE: May 16, 2008

2580T  
12  
70

**Ruggles & Bohm, P.A.**  
Engineering, Surveying, Land Planning

804 North Main  
Wichita, Kansas 67202  
www.rugglesandbohm.com

(316) 264-0000  
(316) 264-4001 fax  
E-mail: info@rugglesandbohm.com