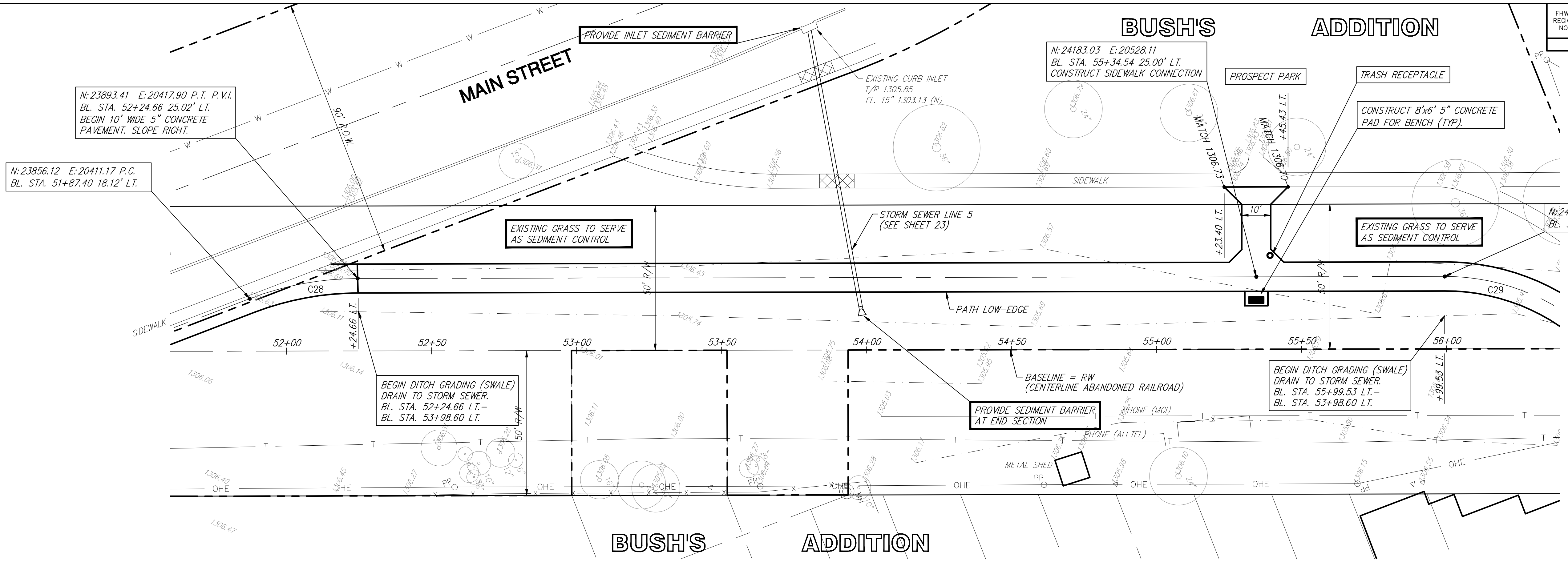
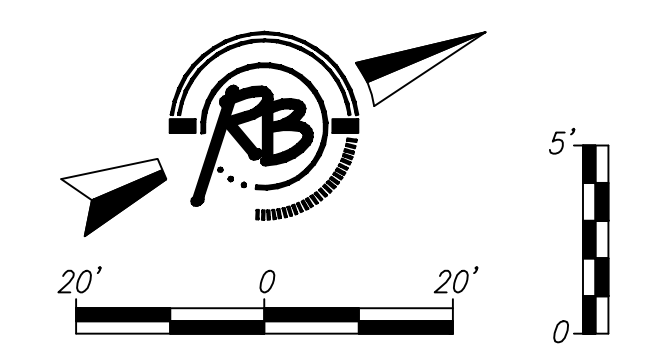


FHWA REGION NO.	STATE	PROJECT NUMBER	FISCAL YEAR	SHEET NUMBER	TOTAL SHEETS
KANSAS	TE	0234 01		16	69

**CURVE DATA:**

C28 D=20'51'29"  
R=105.00'  
L=38.22'  
C29 D=56'14'17"  
R=75.00'  
L=73.62'

REMOVE AND REPLACE WITH 4" CONCRETE PAVEMENT



N: 23893.41 E: 20417.90 P.T. P.V.I.  
BL. STA. 52+24.66 25.02' LT.  
BEGIN 10' WIDE 5" CONCRETE PAVEMENT. SLOPE RIGHT.

N: 23856.12 E: 20411.17 P.C.  
BL. STA. 51+87.40 18.12' LT.

N: 24183.03 E: 20528.11  
BL. STA. 55+34.54 25.00' LT.  
CONSTRUCT SIDEWALK CONNECTION

PROSPECT PARK

TRASH RECEPTACLE

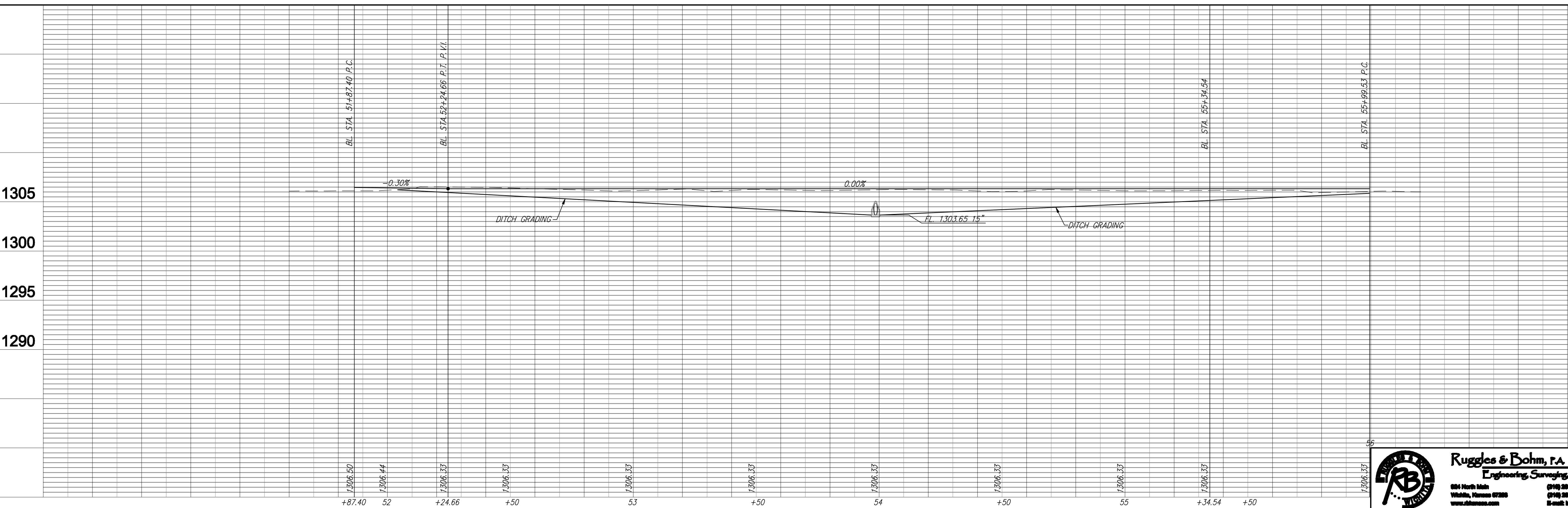
CONSTRUCT 8'x6' 5" CONCRETE PAD FOR BENCH (TYP.)

N: 24244.00 E: 20550.61 P.C.  
BL. STA. 55+99.53 25.00' LT.

BEGIN DITCH GRADING (SWALE)  
DRAIN TO STORM SEWER.  
BL. STA. 52+24.66 LT. -  
BL. STA. 53+98.60 LT.

PROVIDE SEDIMENT BARRIER AT END SECTION

BEGIN DITCH GRADING (SWALE)  
DRAIN TO STORM SEWER.  
BL. STA. 55+99.53 LT. -  
BL. STA. 53+98.60 LT.



**PLAN & PROFILE**  
**MIDTOWN BIKEPATH**  
**WICHITA, KANSAS**

Project No. 472-84008  
Engineering Base {SH 13}

PROJ. MANAGER: [Signature]  
DESIGNER: [Signature]  
CHECKER: [Signature]  
DATE: May 16, 2008

**Ruggles & Bohm, P.A.**  
Engineering, Surveying, Land Planning  
604 North Main  
Wichita, Kansas 67202  
www.rugglesandbohm.com

16  
70