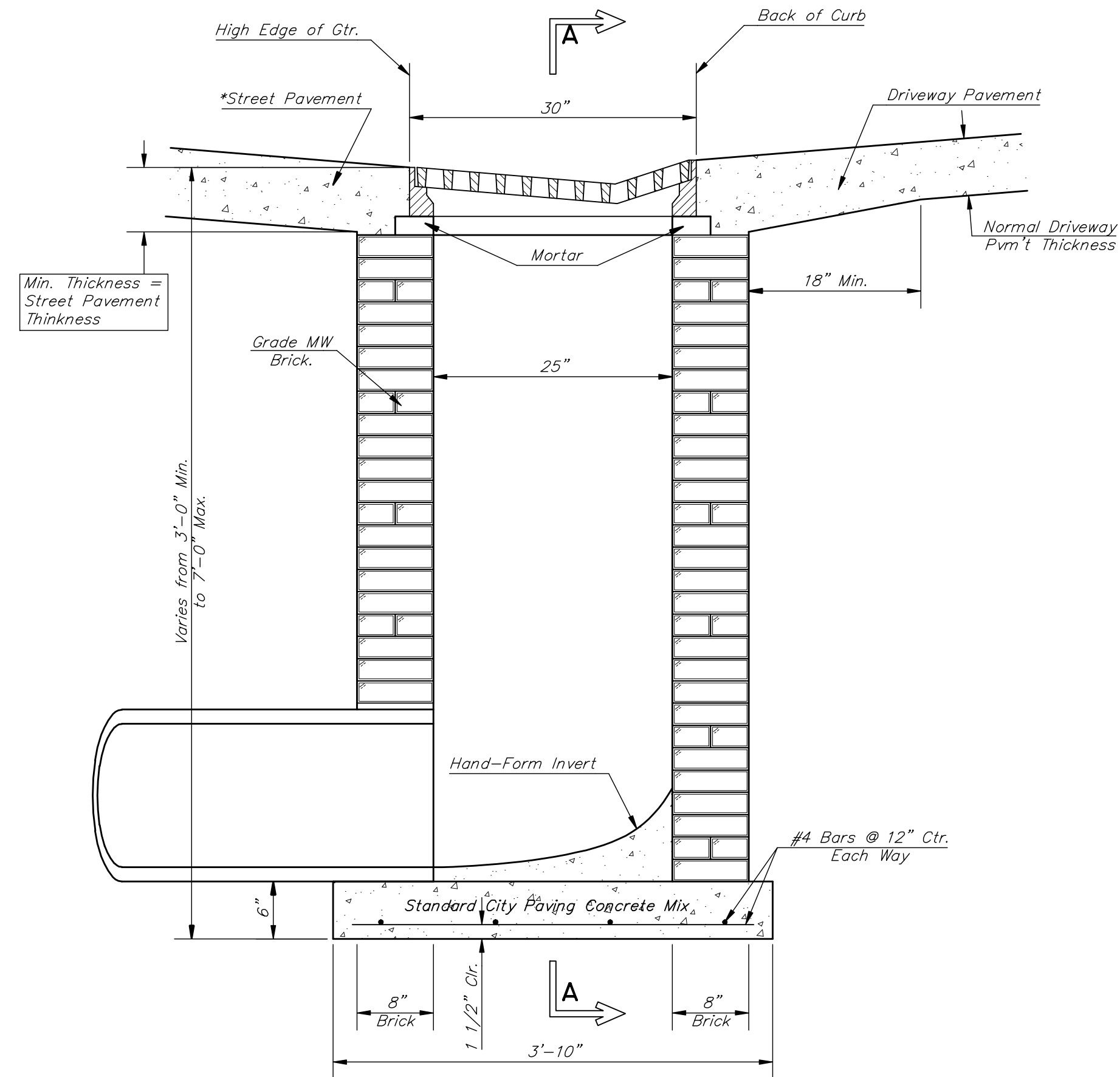
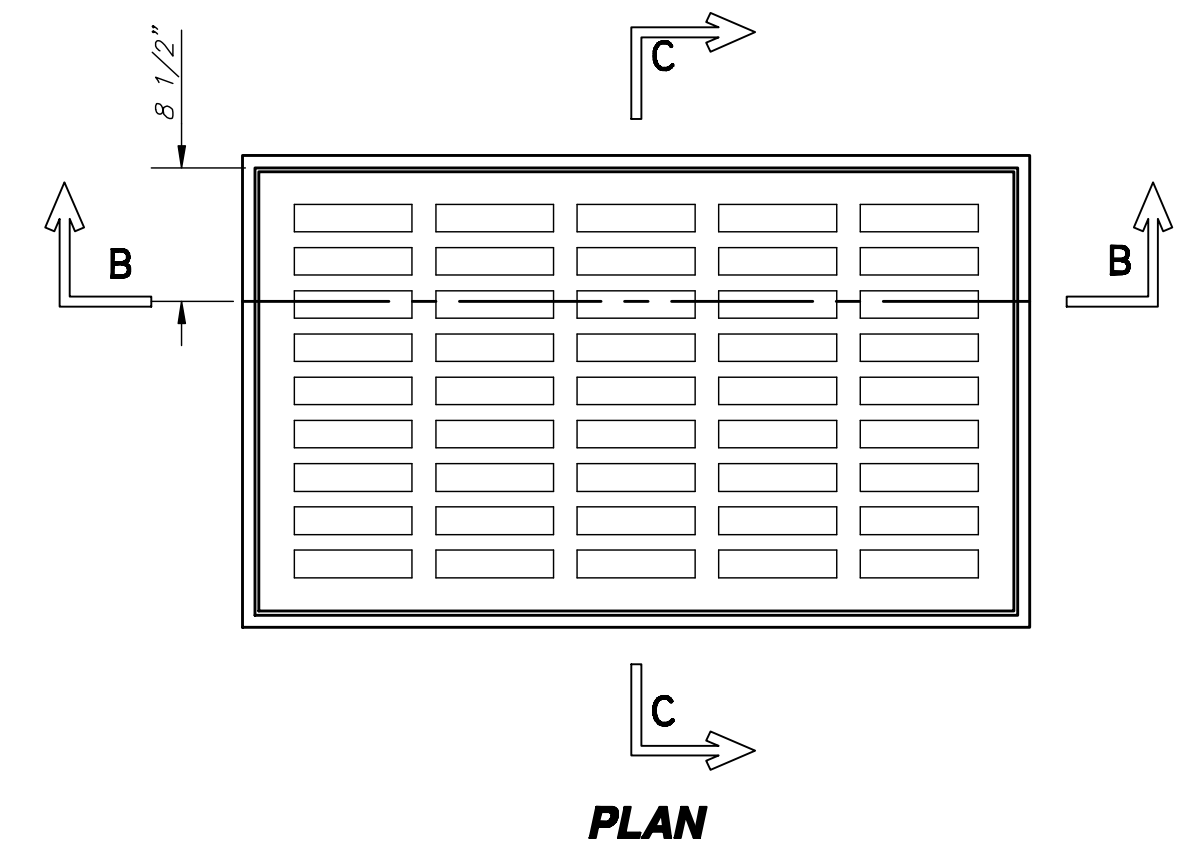


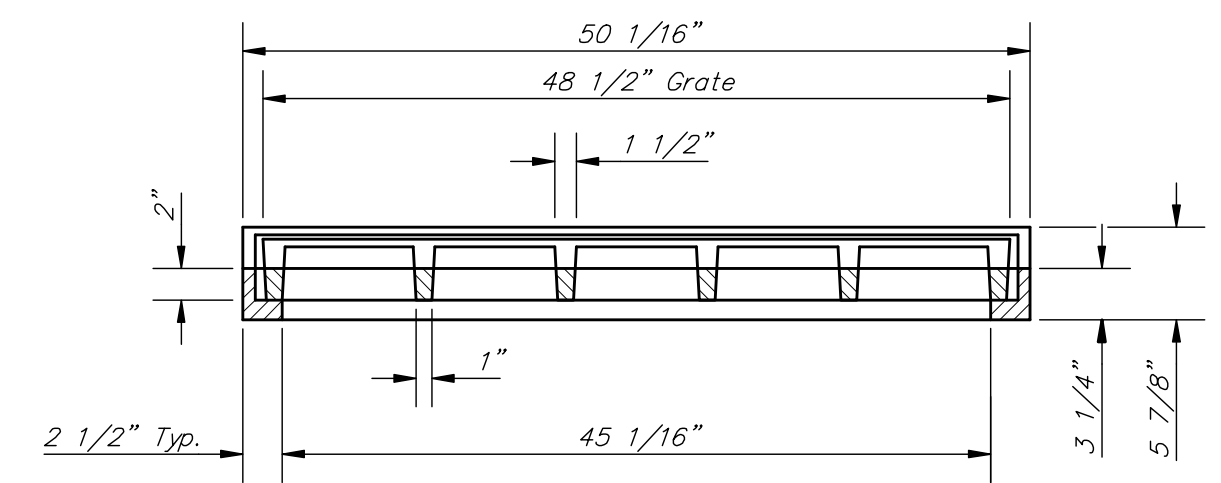
END OUTLET



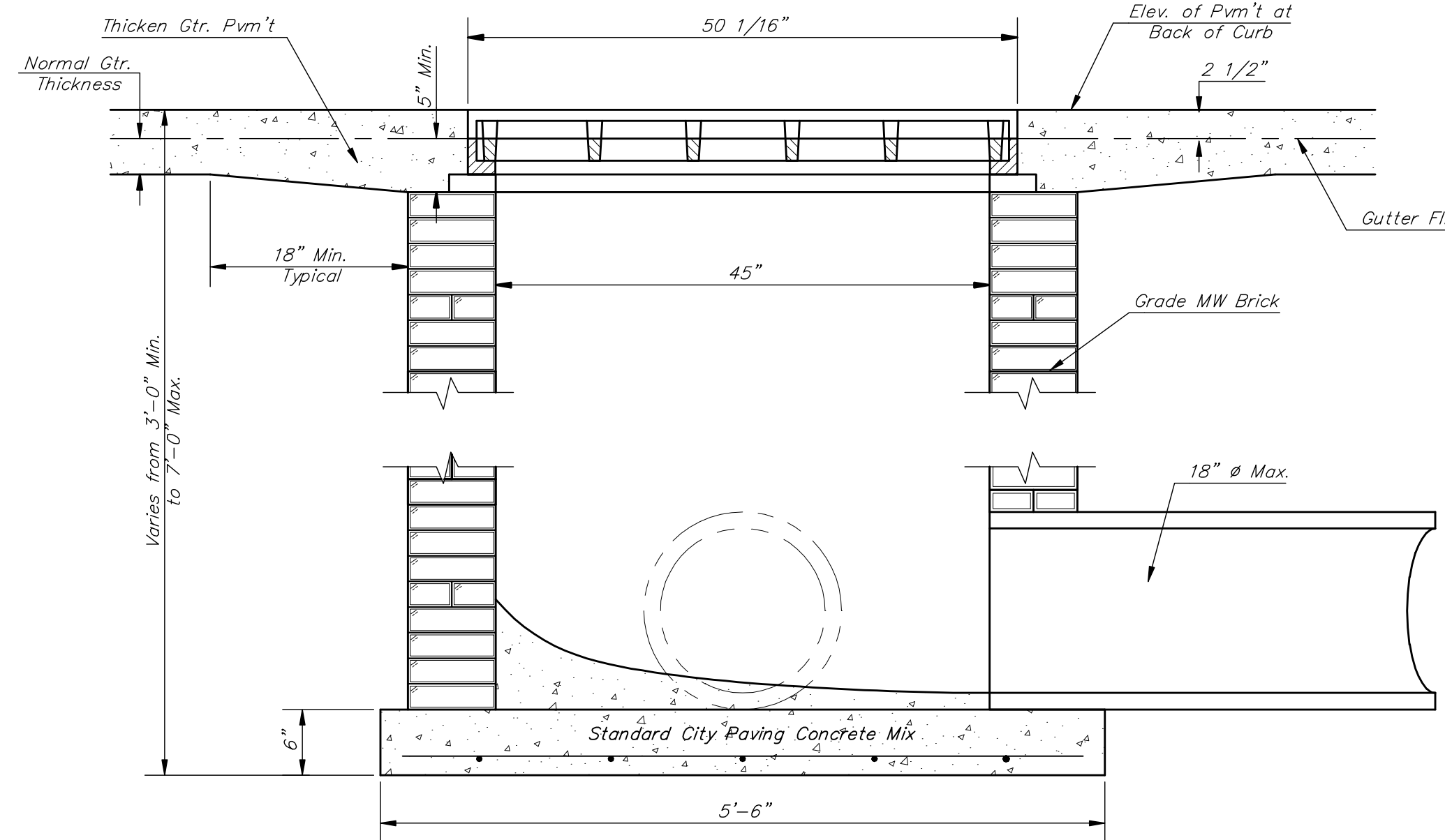
SIDE OUTLET



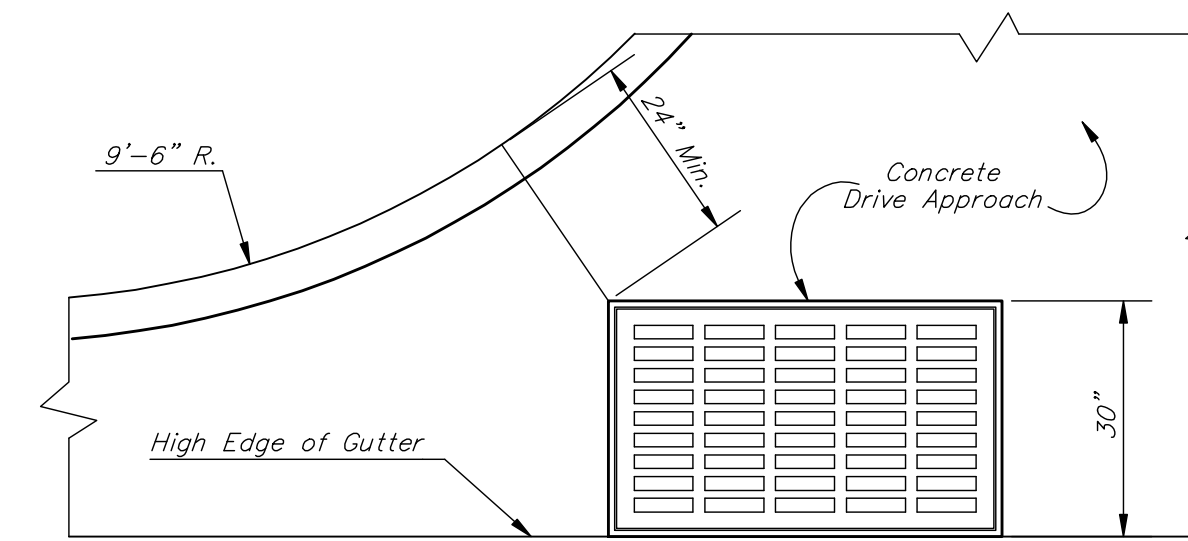
PLAN



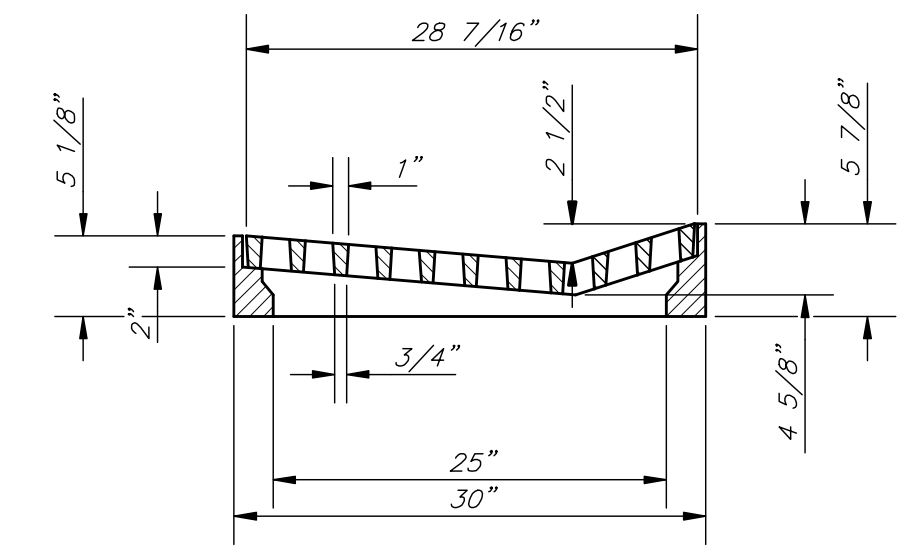
SECTION B-B



SECTION A-A



PLAN



SECTION C-C

DEETER #2095 FRAME & GRATE
TOTAL WEIGHT: 705 lbs.

GENERAL NOTES

1. Grate frame to be installed on thin mortar cushion to insure full support along brick walls. Concrete used for inlet construction shall be concrete pavement mix.
2. Inlet invert shall be shaped with 8 sack sand mix concrete to create flow channels and to increase hydraulic efficiency such that the inlet will be self-cleaning between all inlet and outlet pipes.
3. The ends of all pipes installed in inlets shall be cut off flush with the inside face of the inlet wall.
4. Inlet Frame and Grate to be Deeter #2095 or approved equal.

<p>THE CITY OF WICHITA</p> <p>CITY ENGINEER'S OFFICE CITY HALL - SEVENTH FLOOR 455 NORTH MAIN STREET WICHITA, KANSAS 67202 (316) 268-4501 (316) 268-4114 FAX</p>	DRIVEWAY GRATED INLET SINGLE	
	PROJECT NUMBER 472 84008	OCA #
	DATE MAR 96	SHEET 29 OF 70