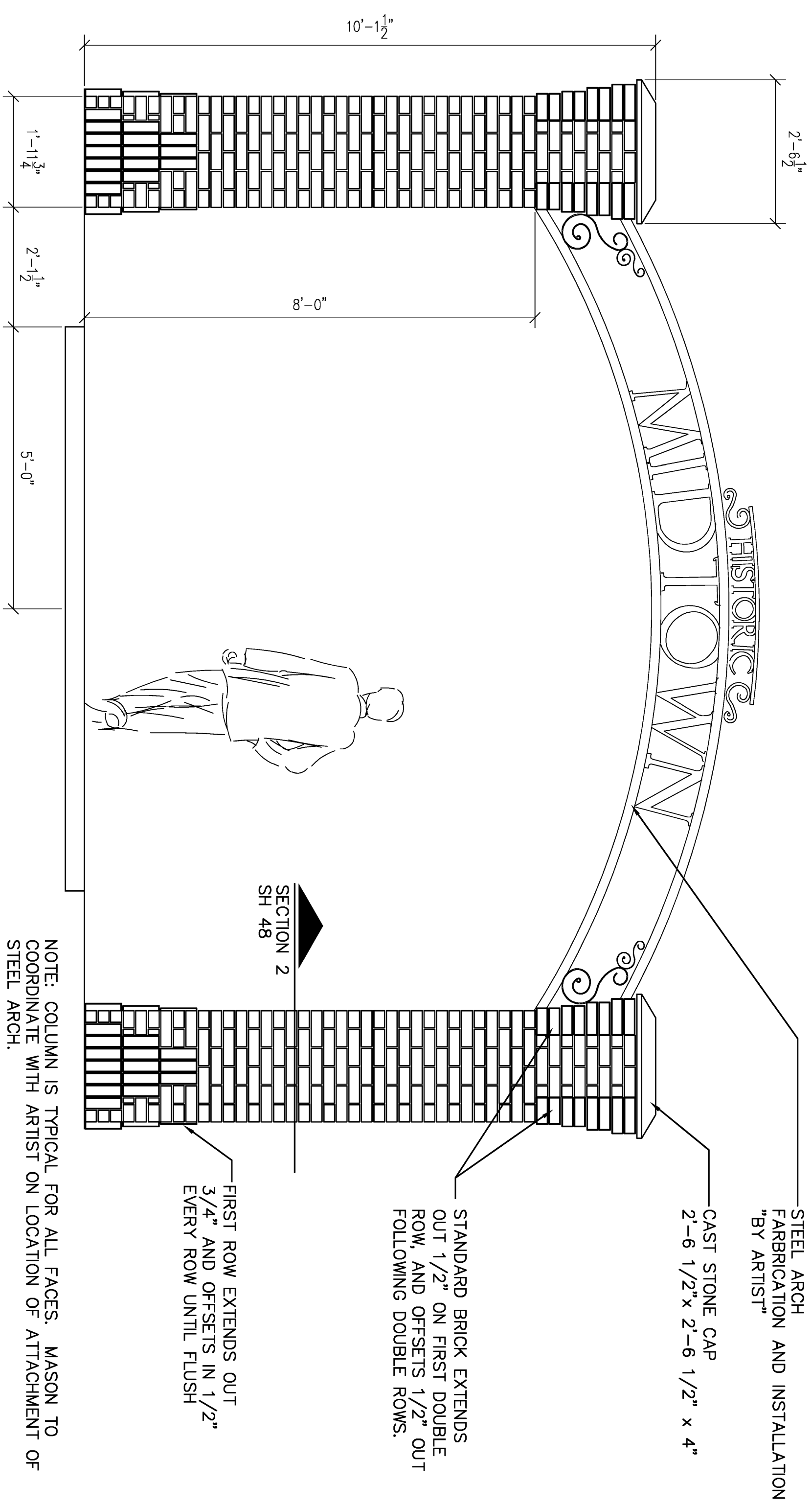


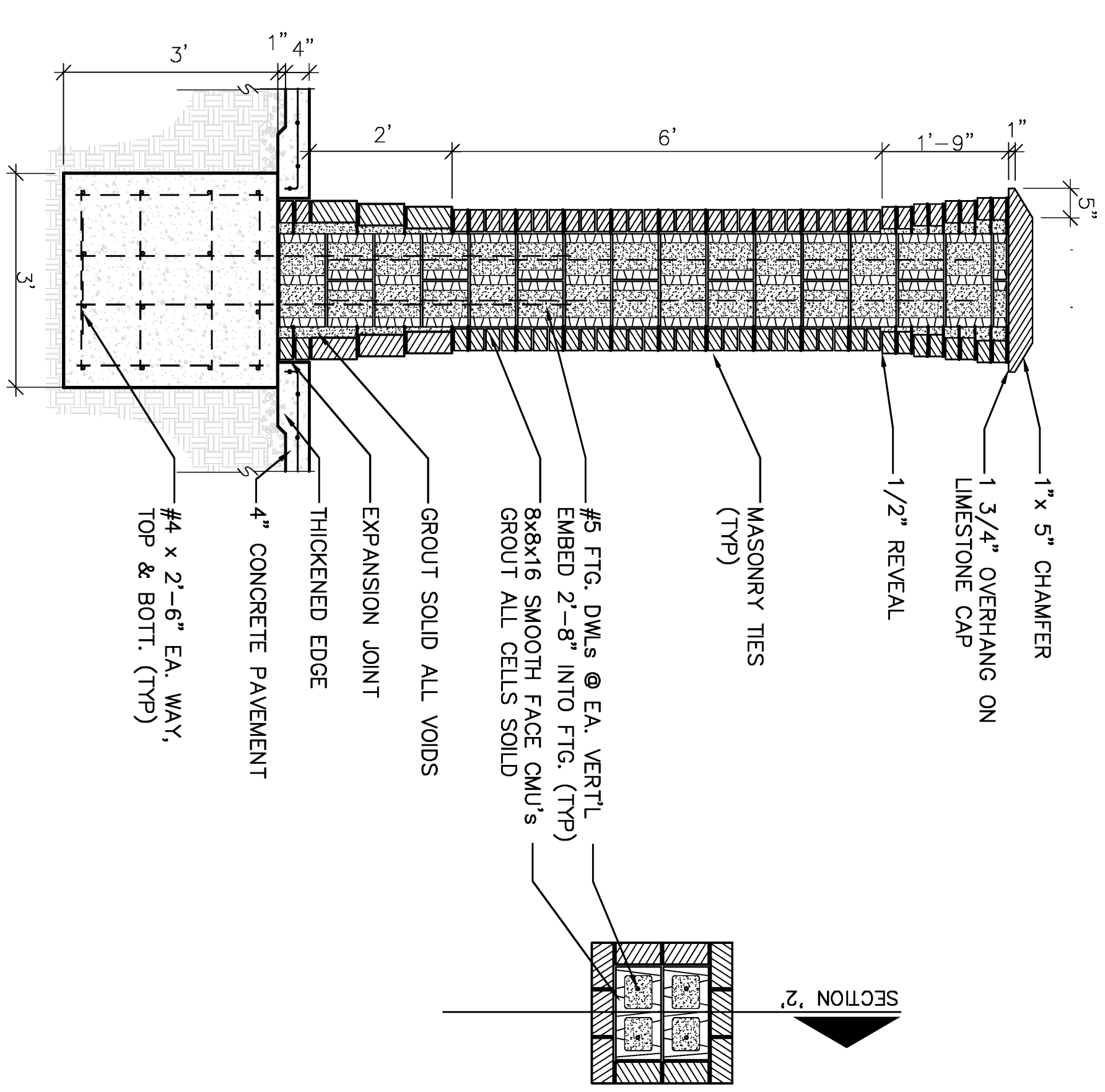
DATE	BY	REFERENCES NOTED
		REFERENCES CHECKED



NOTE: COLUMN IS TYPICAL FOR ALL FACES. MASON TO COORDINATE WITH ARTIST ON LOCATION OF ATTACHMENT OF STEEL ARCH.  
NOTE: ALL BRICK TO BE STANDARD SIZED BUILDING BRICK

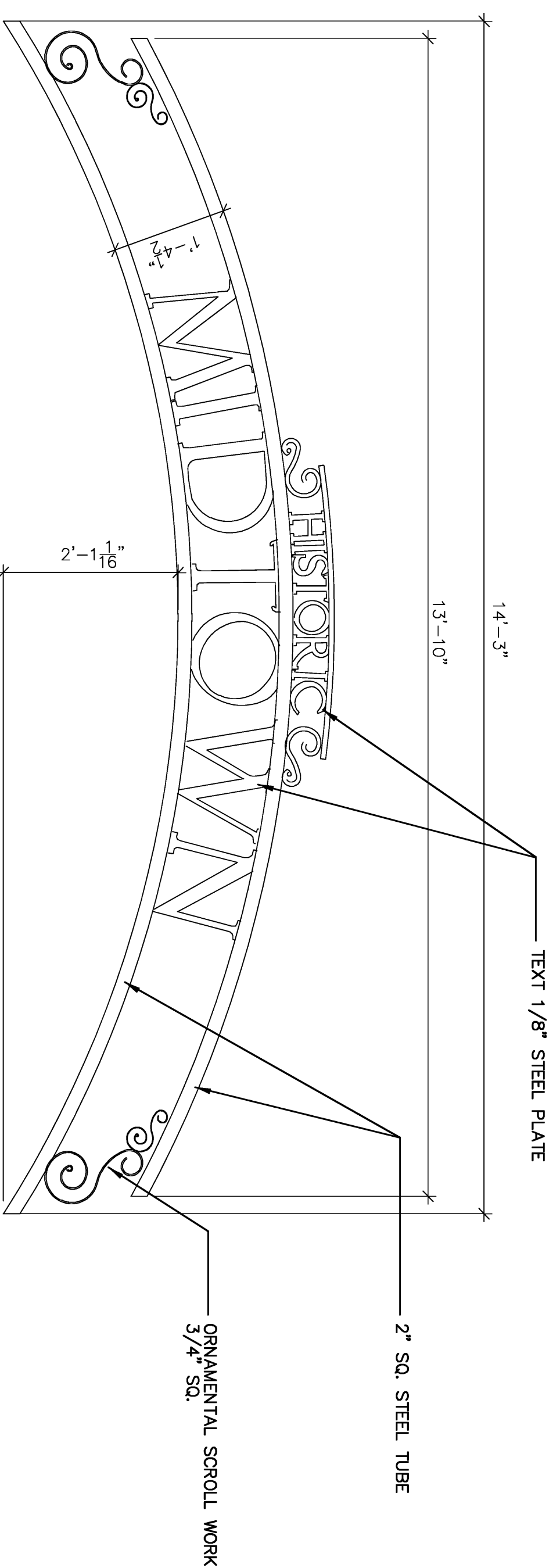
# 1 GATEWAY ELEVATION

N.T.S.



# 2 GATEWAY COLUMN DETAIL

1/2" = 1'-0"

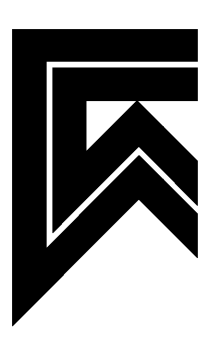


NOTE: STEEL ARCH TO BE FABRICATED & INSTALLED BY ARTIST  
NOTE: ENTIRE STEEL ARCH TO BE POWDERCOATED BLACK  
NOTE: SUBMIT SHOP DRAWINGS FOR FINAL FABRICATION OF ARCH AND CONNECTION TO COLUMNS.

# 3 GATEWAY STEEL ARCH

3/4" = 1'-0"

FIRM REGION NO.	STATE	PROJECT NUMBER	FISCAL YEAR	SHEET NUMBER	TOTAL SHEETS
	KANSAS				



**LAW/KINGDON INC.**  
ARCHITECTS AND LANDSCAPE ARCHITECTS  
345 RIVERVIEW, WICHITA, KS 67203  
Phone (316) 268-0220 Fax (316) 268-0205  
Copyright 2007

**MIDDLETOWN BIKEPATH/GREENWAY  
SITE DETAILS  
WICHITA, KANSAS**

**Ruegless & Bohm, P.A.**  
Engineering, Surveying, Land Planning  
924 North Main  
Wichita, Kansas 67203  
www.rdbkansas.com  
(316) 264-8008  
(316) 264-4821 fax  
E-mail: info@rdbkansas.com

DESIGN	DATE	PROJECT NUMBER
Design	8/7/07	0A395
DRAWN	DATE	
MAN	8/7/07	
REVIEW	DATE	
JB	8/7/07	
DATE	DATE	
8/7/07	8/7/07	

5852  
SHEET  
48  
OF  
67