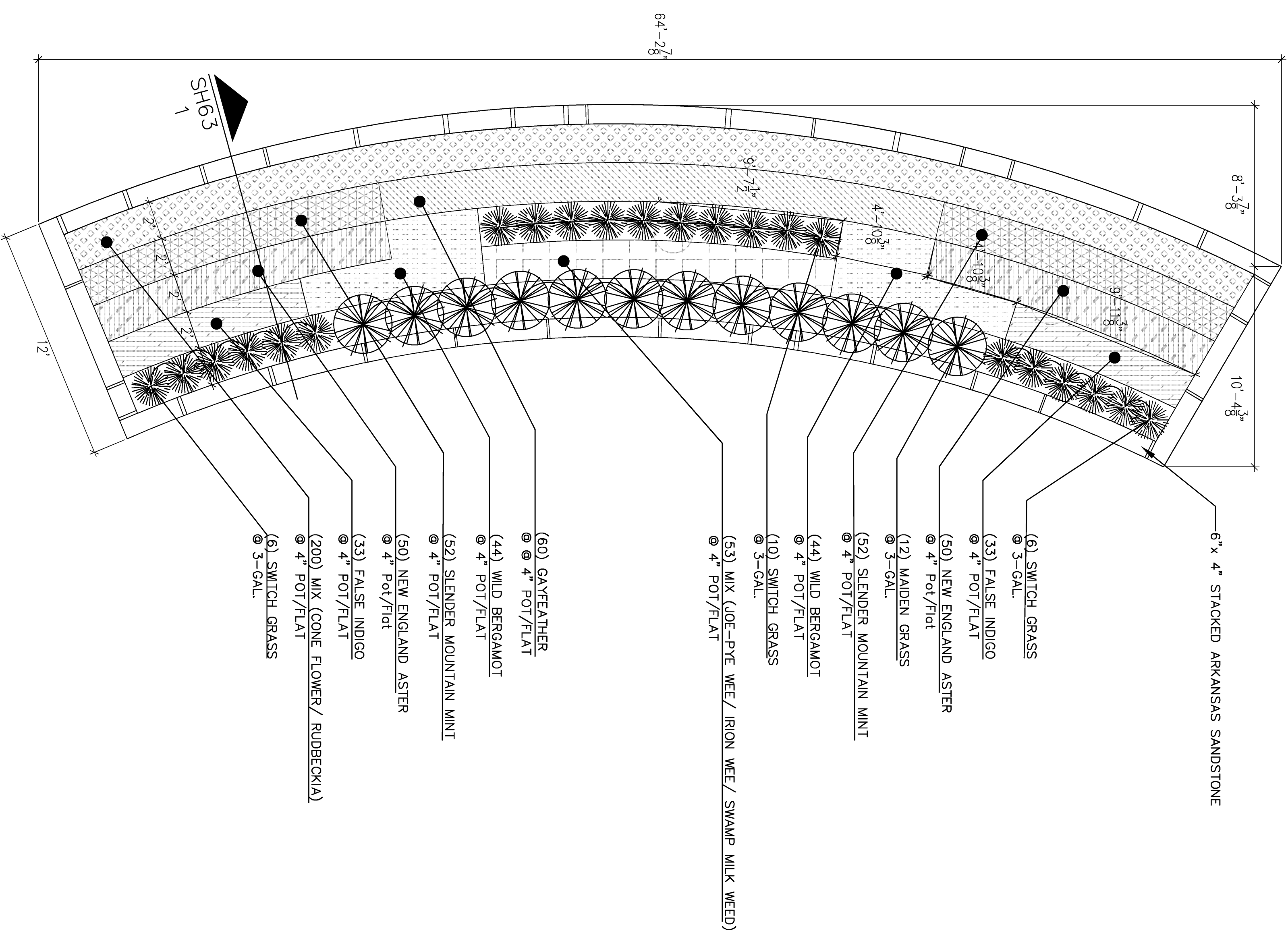


DATE	BY
REFERENCES NOTED	
REFERENCES CHECKED	

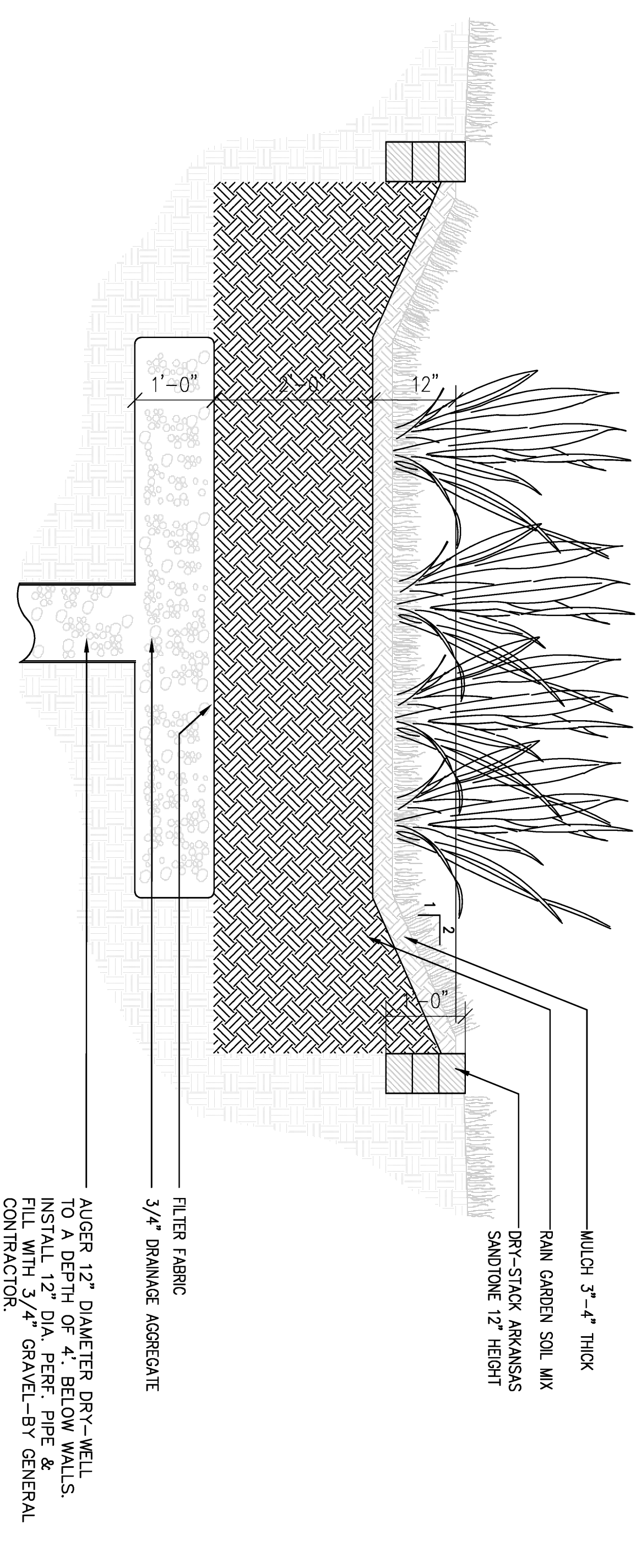


PLANT MATERIAL SCHEDULE

Quantity	Scientific Name	Common Name	Size (Min.)	Height (Min.)	Comments
18	<i>Asclepias incarnata</i>	SWAMP MILKWEED	Flat	-	33% Mix w/ Iron Weed/Joe-Pye
100	<i>Aster nove-angliae</i>	NEW ENGLAND ASTER	Flat	-	-
66	<i>Baptisia australis</i>	FALSE INDIGO	Flat	-	50% Mix w/ Black-eyed Susan
100	<i>Echinacea purpurea</i>	CONE FLOWER	Flat	-	-
17	<i>Eupatorium purpureum</i>	JOE-PYE WEED	Flat	-	33% Mix w/ Milkweed/Iron Weed
60	<i>Liatris scariosa</i>	GAYFEATHER	Flat	-	-
12	<i>Miscanthus sinensis</i>	MAIDEN GRASS	3-Gal.	-	-
88	<i>Morinda fistulosa</i>	WILD BERGAMOT	Flat	-	-
22	<i>Panicum virgatum</i>	SWITCH GRASS	3-Gal.	-	50% Mix w/ Cone Flower
104	<i>Pyronanthemum tenuifolium</i>	SLENDER MOUNTAIN MINT	Flat	-	-
100	<i>Rudbeckia hirta var pulcherrima</i>	BLACK-EYED SUSAN	Flat	-	-
18	<i>Vernonia noveboracensis</i>	IRON WEED	Flat	-	33% Mix w/ Milkweed/Joe-Pye

NOTE: ALL PLANTINGS FOR 4" POTS/FLATS ARE BASED ON A 10" O.C. IN A TRIANGLE PLANTING.

1 RAINGARDEN SECTION



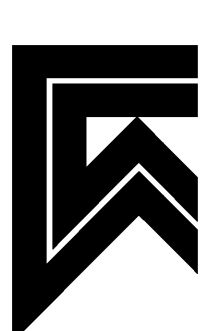
3/4" = 1'-0"

FISMA REGION NO.	STATE	PROJECT NUMBER	FISCAL YEAR	SHEET NUMBER	TOTAL SHEETS
	KANSAS			67	

A

9TH & WICHITA RAIN GARDEN

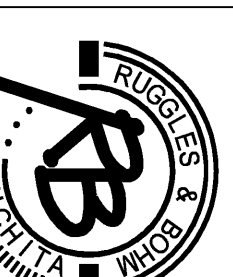
1/4" = 1'-0"



LAW/KINGDON, INC.
ARCHITECTURAL PLANNERS
& LANDSCAPE ARCHITECTS
345 RIVERVIEW, WICHITA, KS 67203
Phone (316) 268-0220 Fax (316) 268-0205
www.lawkingdon.com

MIDTOWN BIKEPATH/GREEWAY RAIN GARDEN PLANTING PLAN WICHITA, KANSAS

Ruegels & Bohm, P.A.
Engineering, Surveying, Land Planning



924 North Main
Wichita, Kansas 67203
www.rkb.com
Phone (316) 264-8008
(316) 264-4821 fax
E-mail: info@rkb.com

DESIGN	DATE	PROJECT NUMBER
Design	8/7/07	04395
REVIEW	DATE	PROJECT NUMBER
WAW		

DESIGN	DATE	PROJECT NUMBER
Design	8/7/07	04395
REVIEW	DATE	PROJECT NUMBER
WAW		

SHEET 64 OF 67