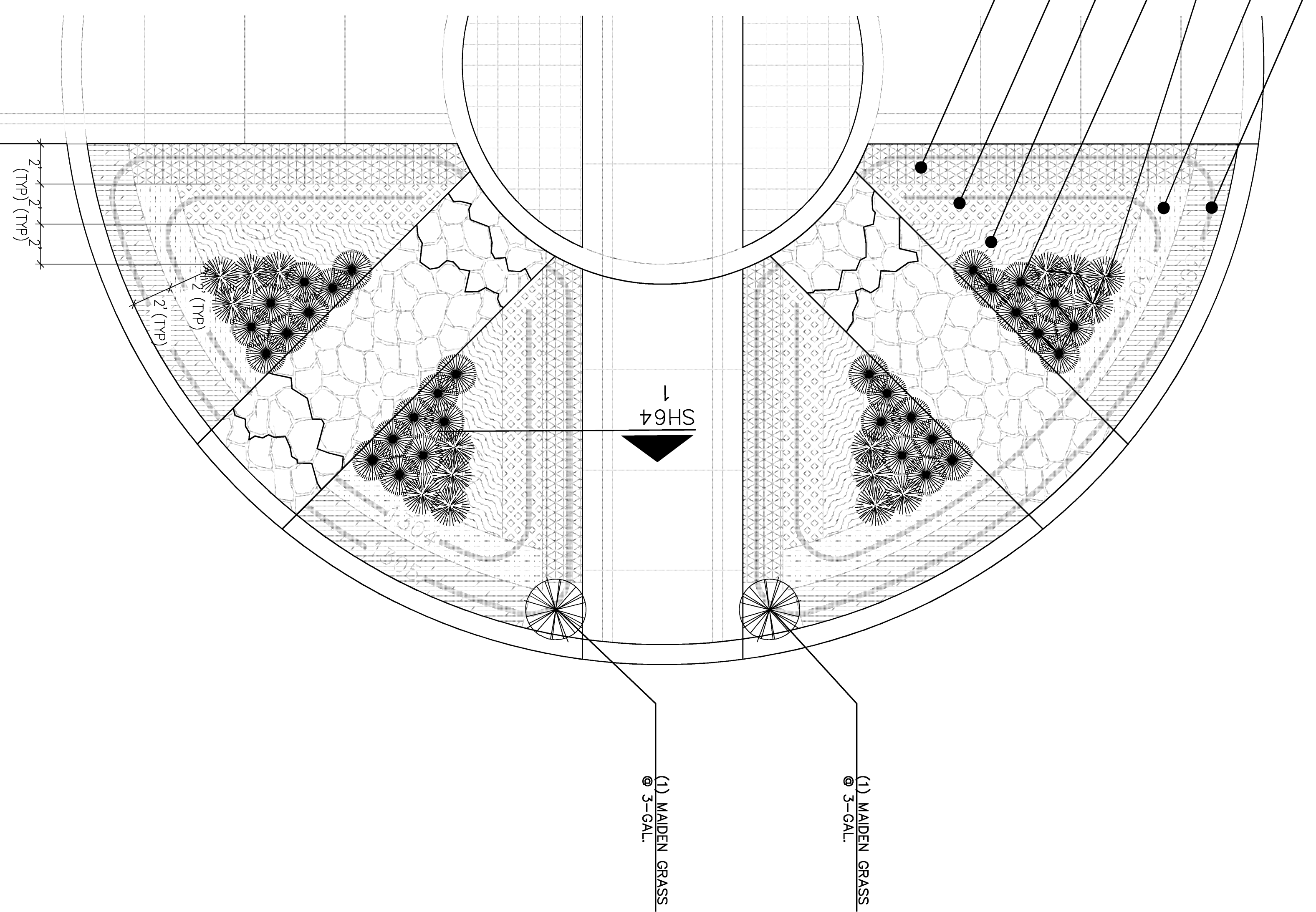


REFERENCES NOTED	BY	DATE
REFERENCES CHECKED		

- (50) FALSE INDIGO
@ 4" Pot/Flat
- (38) WILD BERGAMONT
@ 4" Pot/Flat
- (4) SWITCH GRASS
@ 3-GAL.
- (8) FEATHER REED GRASS
@ 3-GAL.
- (33) MARSH PHLOX
@ 4" Pot/Flat
- (43) CONE FLOWER/RUBERIA
@ 4" Pot/Flat
- (55) SLENDER MOUNTAIN MINT
@ 4" Pot/Flat

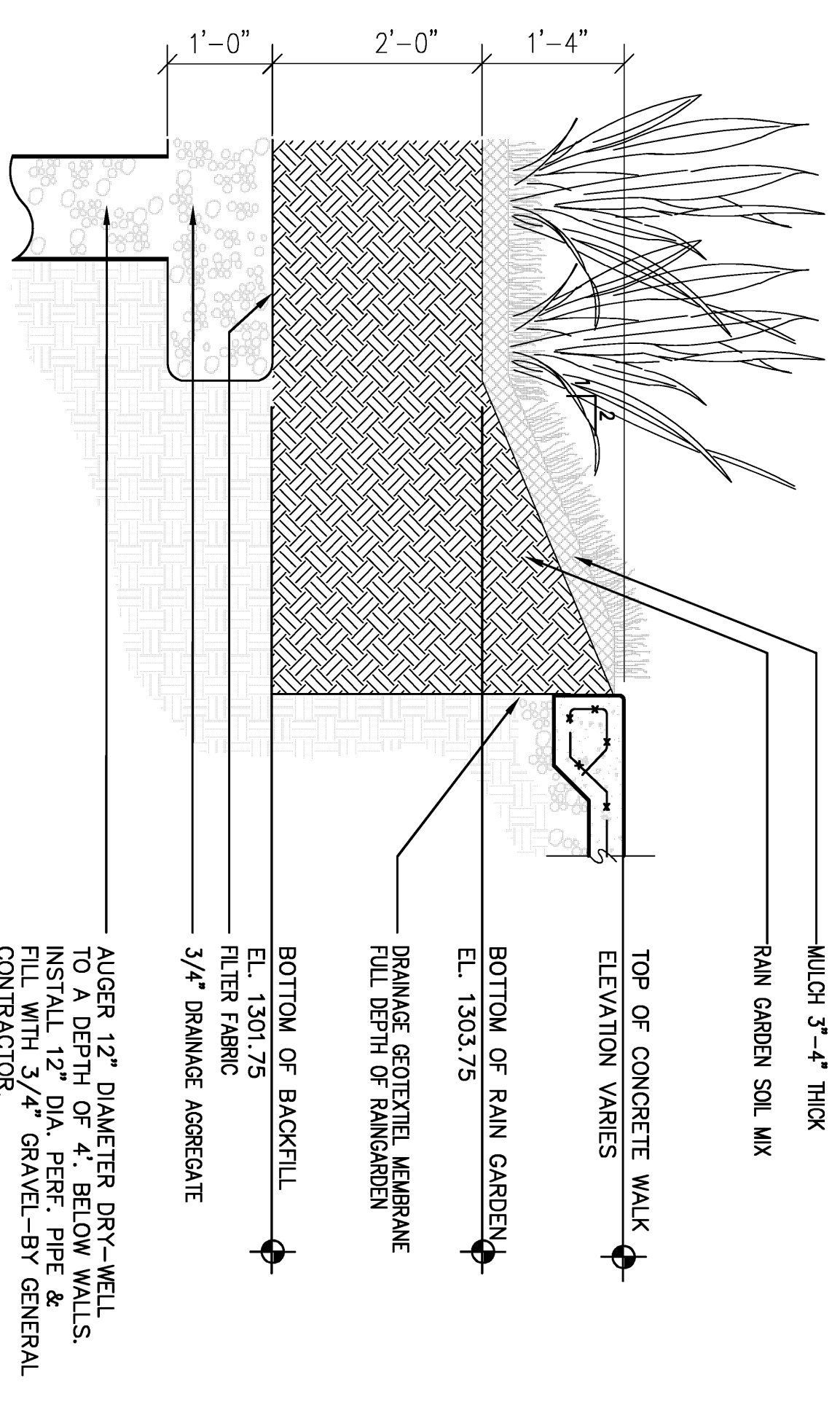


A OTIS PLAZA RAIN GARDEN

1/4" = 1'-0"

PLANT MATERIAL SCHEDULE

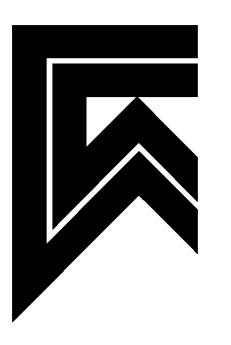
Quantity	Scientific Name	Common Name	Size (Min.)	Height (Min)	Comments
200	Baptisia australis	FALSE INDIGO	Flat	-	-
32	Colimogrostis oculiflora 'Striato'	FEATHER REED GRASS	Flat	-	-
66	Echinacea purpurea	CONE FLOWER	Flat	-	50% Mix w/ Block-eyed Susan
2	Miscanthus sinensis	MALDEN GRASS	Flat	-	-
154	Monarda fistulosa	WILD BERGAMONT	Flat	-	-
16	Panicum virgatum	SWITCH GRASS	3-Gal.	-	-
132	Phlox globberrima	MARSH PHLOX	Flat	-	-
220	Pycnanthemum tenuifolium	SLENDER MOUNTAIN MINT	3-Gal.	-	-
66	Rudbeckia hirta var pulcherrima	BLACK-EYED SUSAN	Flat	-	50% Mix w/ Cone Flower



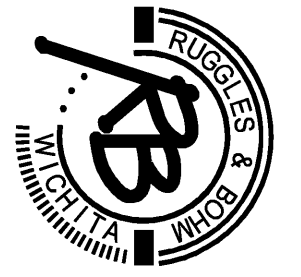
1 RAINGARDEN SECTION

3/4" = 1'-0"

MIDTOWN BIKEPATH/GREEWAY RAIN GARDEN PLANTING PLAN WICHITA, KANSAS



LAW/KINGDON INC.
ARCHITECTS, PLANNERS
& LANDSCAPE ARCHITECTS
345 RIVERVIEW, WICHITA, KS 67203
Phone (316) 268-0220 Fax (316) 268-0205
Copyright 2011



Rugelies & Bohm, P.A.
Engineering, Surveying, Land Planning
924 North Main
Wichita, Kansas 67203
www.rkb.com
E-mail: info@rkb.com

DESIGN	DATE	SHEET	TOTAL SHEETS
Design	8/7/07	65	67
DRWN		65	
REVIEW		65	
DATE		67	

FIRM REGION NO.	STATE	PROJECT NUMBER	FISCAL YEAR	SHEET NUMBER	TOTAL SHEETS
	KANSAS			67	