

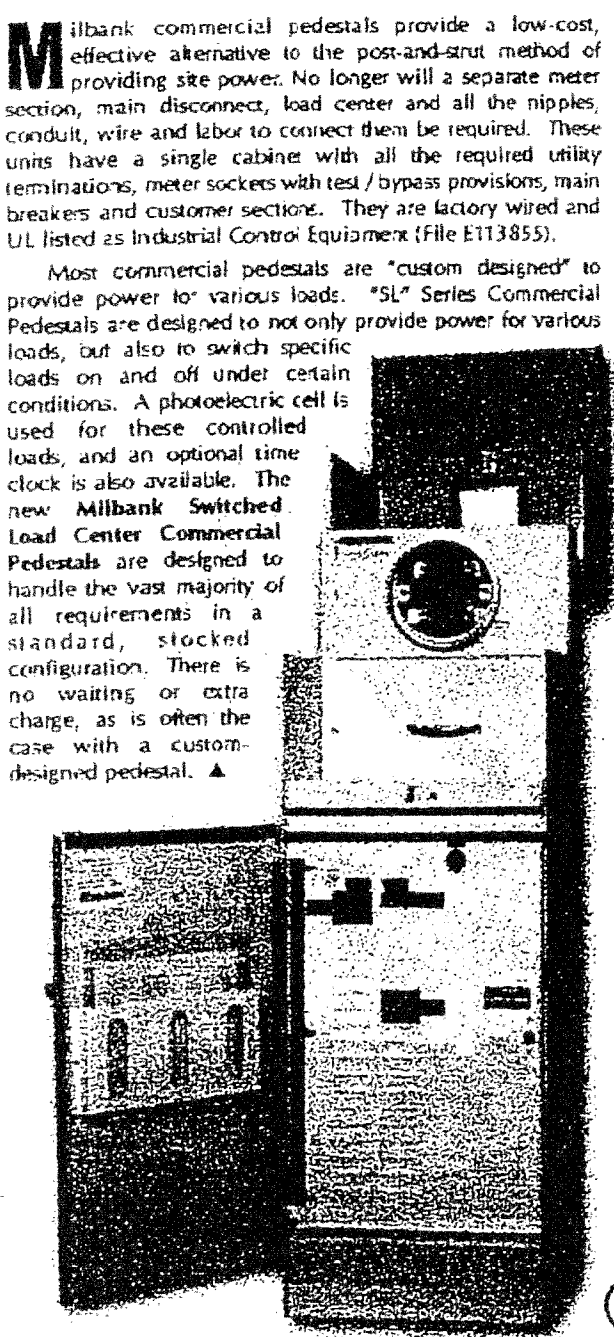
MILBANK Commercial Pedestals

CP3B "SL" Series

Switched Load Center Series
1Ø 3 wire 120/240 or 208Y/120 volt
Typical applications: Traffic signal, parking lot, highway, & athletic field lighting

Features:

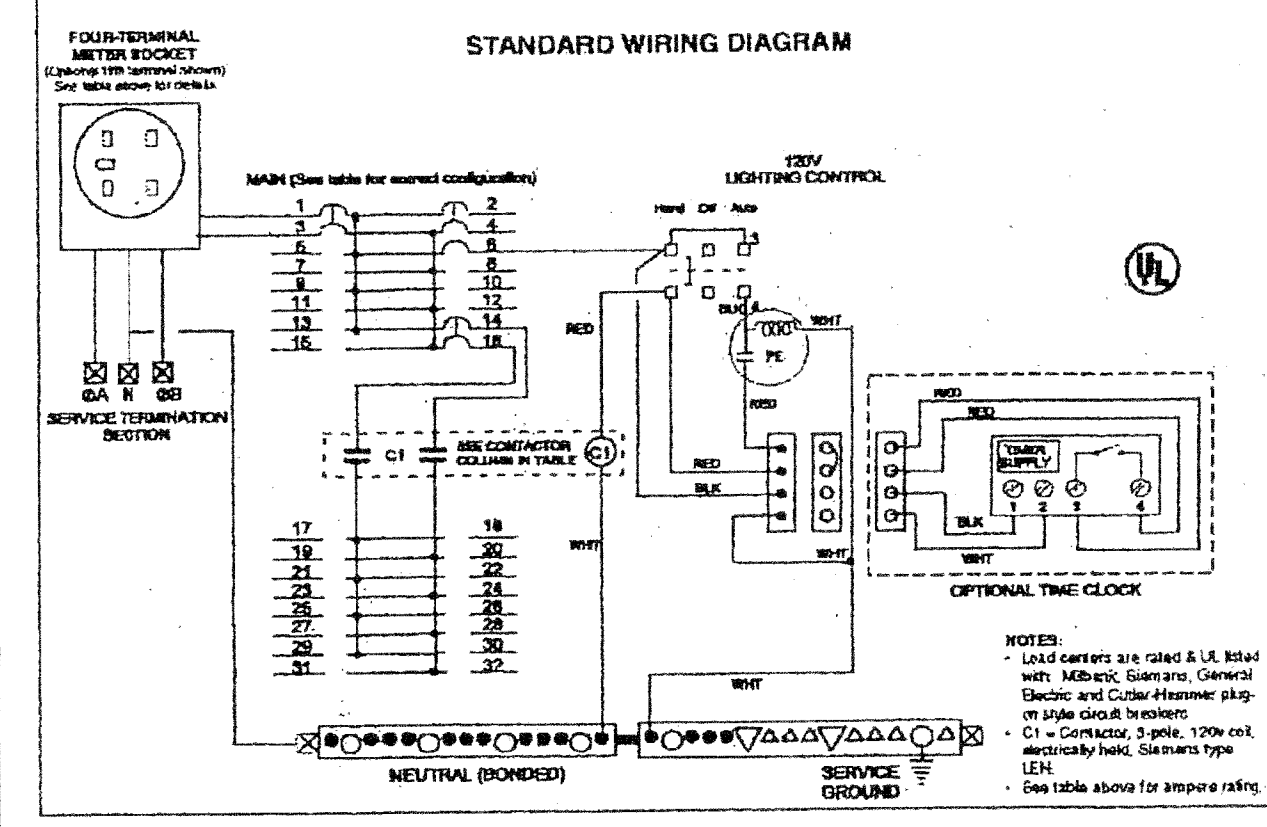
- These units include everything required for remote site service:
- NEMA 3R construction
- Expandable - Load centers allow for future expansion without costly modifications
- All units feature 200 amp meter socket with optional field-installable fifth terminal kit available
- 22k ampere interrupting capacity (KAIC) standard
- Optional mounting base can be embedded in concrete for fast, easy installation
- Separate sealable and lockable utility termination section
- Separate sealable and lockable metering section with the option of:
 - EHHR
 - Milbank ring-type socket with test / bypass blocks (conforms to UL508 300)
 - OR
 - Milbank heavy duty ringless socket with lever bypass
- Separate sealable and lockable customer section with:
 - PE receptacle, Lexan® window and glare shield
 - Hand-Off-Auto (HOA) switch
 - Contactor controlling a 16-circuit load center for controlled loads
 - Pre-mounted DIN rail and pre-wired connector to add an optional "plug and play" time clock kit
 - A circuit directory to document configuration
- A load center for "always on" loads that includes:
 - Main circuit breaker
 - Control power circuit breaker
 - Switched load center main breaker
 - Nine (200 amp model) or twelve (100 amp model) branch breaker spaces
 - A circuit directory to document configuration



CP3B "SL" Series Stocking Information & Wiring Diagram

CATALOG NUMBER	OPTIONAL FIFTH TERMINAL KIT	MAIN CB AMPS	MAIN CB SPACES	CONTACTOR AMPERAGE	METER SOCKET TYPE
CP3B1110A22SL1	105J	100	(1,3)	60	Ring-type meter socket with test / bypass blocks
CP3B1110A22SL1	105J	100	(1,2,3,4)	100	Ring-type meter socket with test / bypass blocks
CP3B5110A22SL1	K3855	200	(1,3)	60	Ringless heavy duty meter socket with lever bypass
CP3B5110A22SL1	K3855	200	(1,2,3,4)	100	Ringless heavy duty meter socket with lever bypass

Accessories	Description
CP-TCD	7-day time clock kit
CP-TC24H	24-hour time clock kit
CP-TCWIRE	Male four-pin connector and wiring harness for use with time clocks other than above
105J	Fifth terminal kit for use with ring-type meter sockets
K3855	Fifth terminal kit for use with ringless meter sockets
CP-16PDMNT-CALT	Pedestal mounting base (includes mounting hardware)
CP-ABK5R	Anchor bolt kit (includes four 5/8" x 11" x 18" anchor bolts)



Explanation of Underground Service Pedestal Model Numbers:

CP2B CP3A CP3B

4 1 1 1 1 2 A 2 2 2 S L C P - T C T D

- 1. Meter Sockets**
 - 0 = No socket
 - 1 = Ring type socket with test / bypass provision
 - 2 = Ring type socket with test / bypass provision
 - 3 = Ring type socket with test / bypass provision
 - 4 = Ring type socket with test / bypass provision
 - 5 = Ring type socket with test / bypass provision
 - 6 = Ring type socket with test / bypass provision
 - 7 = Ringless heavy duty meter socket with lever bypass
 - 8 = Ringless heavy duty meter socket with lever bypass
 - 9 = Ringless heavy duty meter socket with lever bypass
- 2. Amperage**
 - 0 = No rating
 - 1 = 100amps
 - 2 = 200amps
 - 3 = 250amps
 - 4 = 400amps (per UL508C)
- 3. System Voltage**
 - 0 = No rating
 - 1 = 120V, 1Ø, 2W (4-Jaw)
 - 2 = 120/240V, 1Ø, 3W (4-Jaw)
 - 3 = 208/240V, 1Ø, 3W (4-Jaw)
 - 4 = 208/240V, 1Ø, 3W (4-Jaw)
 - 5 = 208/240V, 3Ø, 4W (7-Jaw)
 - 6 = 240/277V, 1Ø, 3W (4-Jaw)
 - 7 = 240V, 3Ø, 3W (3-Jaw)
 - 8 = 480/277V, 3Ø, 4W (7-Jaw)
 - 9 = 480V, 1Ø, 2W (4-Jaw)
 - A = No rating
 - B = 480/240V, 3Ø, 4W (7-Jaw)
 - C = 120/240V, 1Ø, 3W (4-Jaw)
 - D = 240/277V, 1Ø, 3W (4-Jaw)
 - E = 480V, 1Ø, 2W (4-Jaw)
- 4. Service/Main Disconnect**
 - 0 = No Main (max 6 disconnect per unit)
 - 1 = (1) Circuit Breaker Main
 - 2 = (2) Circuit Breaker Service Disconnect
 - 3 = (1) T-Fuse Switch Main
 - 4 = (1) Circuit Breaker Service Disconnect
 - 5 = (1) A-Fuse Main (100A Max)
 - 6 = (1) A-Fuse Main (100A)
 - 7 = (1) A-Fuse Main (100A)
 - 8 = (1) A-Fuse Main (100A)
 - 9 = (1) A-Fuse Main (100A)
 - A = (1) Circuit Breaker Service Disconnect with interlock
 - B = (1) T-Fuse Switch Service Disconnect
 - C = (2) T-Fuse Switch Service Disconnect
- 5. Distribution Interior**
 - A = (2) 1Ø/2Ø/3Ø/4Ø/5Ø/6Ø/7Ø/8Ø/9Ø/10Ø/11Ø/12Ø/13Ø/14Ø/15Ø/16Ø/17Ø/18Ø/19Ø/20Ø/21Ø/22Ø/23Ø/24Ø/25Ø/26Ø/27Ø/28Ø/29Ø/30Ø/31Ø/32Ø/33Ø/34Ø/35Ø/36Ø/37Ø/38Ø/39Ø/40Ø/41Ø/42Ø/43Ø/44Ø/45Ø/46Ø/47Ø/48Ø/49Ø/50Ø/51Ø/52Ø/53Ø/54Ø/55Ø/56Ø/57Ø/58Ø/59Ø/60Ø/61Ø/62Ø/63Ø/64Ø/65Ø/66Ø/67Ø/68Ø/69Ø/70Ø/71Ø/72Ø/73Ø/74Ø/75Ø/76Ø/77Ø/78Ø/79Ø/80Ø/81Ø/82Ø/83Ø/84Ø/85Ø/86Ø/87Ø/88Ø/89Ø/90Ø/91Ø/92Ø/93Ø/94Ø/95Ø/96Ø/97Ø/98Ø/99Ø/100Ø/101Ø/102Ø/103Ø/104Ø/105Ø/106Ø/107Ø/108Ø/109Ø/110Ø/111Ø/112Ø/113Ø/114Ø/115Ø/116Ø/117Ø/118Ø/119Ø/120Ø/121Ø/122Ø/123Ø/124Ø/125Ø/126Ø/127Ø/128Ø/129Ø/130Ø/131Ø/132Ø/133Ø/134Ø/135Ø/136Ø/137Ø/138Ø/139Ø/140Ø/141Ø/142Ø/143Ø/144Ø/145Ø/146Ø/147Ø/148Ø/149Ø/150Ø/151Ø/152Ø/153Ø/154Ø/155Ø/156Ø/157Ø/158Ø/159Ø/160Ø/161Ø/162Ø/163Ø/164Ø/165Ø/166Ø/167Ø/168Ø/169Ø/170Ø/171Ø/172Ø/173Ø/174Ø/175Ø/176Ø/177Ø/178Ø/179Ø/180Ø/181Ø/182Ø/183Ø/184Ø/185Ø/186Ø/187Ø/188Ø/189Ø/190Ø/191Ø/192Ø/193Ø/194Ø/195Ø/196Ø/197Ø/198Ø/199Ø/200Ø/201Ø/202Ø/203Ø/204Ø/205Ø/206Ø/207Ø/208Ø/209Ø/210Ø/211Ø/212Ø/213Ø/214Ø/215Ø/216Ø/217Ø/218Ø/219Ø/220Ø/221Ø/222Ø/223Ø/224Ø/225Ø/226Ø/227Ø/228Ø/229Ø/230Ø/231Ø/232Ø/233Ø/234Ø/235Ø/236Ø/237Ø/238Ø/239Ø/240Ø/241Ø/242Ø/243Ø/244Ø/245Ø/246Ø/247Ø/248Ø/249Ø/250Ø/251Ø/252Ø/253Ø/254Ø/255Ø/256Ø/257Ø/258Ø/259Ø/260Ø/261Ø/262Ø/263Ø/264Ø/265Ø/266Ø/267Ø/268Ø/269Ø/270Ø/271Ø/272Ø/273Ø/274Ø/275Ø/276Ø/277Ø/278Ø/279Ø/280Ø/281Ø/282Ø/283Ø/284Ø/285Ø/286Ø/287Ø/288Ø/289Ø/290Ø/291Ø/292Ø/293Ø/294Ø/295Ø/296Ø/297Ø/298Ø/299Ø/300Ø/301Ø/302Ø/303Ø/304Ø/305Ø/306Ø/307Ø/308Ø/309Ø/310Ø/311Ø/312Ø/313Ø/314Ø/315Ø/316Ø/317Ø/318Ø/319Ø/320Ø/321Ø/322Ø/323Ø/324Ø/325Ø/326Ø/327Ø/328Ø/329Ø/330Ø/331Ø/332Ø/333Ø/334Ø/335Ø/336Ø/337Ø/338Ø/339Ø/340Ø/341Ø/342Ø/343Ø/344Ø/345Ø/346Ø/347Ø/348Ø/349Ø/350Ø/351Ø/352Ø/353Ø/354Ø/355Ø/356Ø/357Ø/358Ø/359Ø/360Ø/361Ø/362Ø/363Ø/364Ø/365Ø/366Ø/367Ø/368Ø/369Ø/370Ø/371Ø/372Ø/373Ø/374Ø/375Ø/376Ø/377Ø/378Ø/379Ø/380Ø/381Ø/382Ø/383Ø/384Ø/385Ø/386Ø/387Ø/388Ø/389Ø/390Ø/391Ø/392Ø/393Ø/394Ø/395Ø/396Ø/397Ø/398Ø/399Ø/400Ø/401Ø/402Ø/403Ø/404Ø/405Ø/406Ø/407Ø/408Ø/409Ø/410Ø/411Ø/412Ø/413Ø/414Ø/415Ø/416Ø/417Ø/418Ø/419Ø/420Ø/421Ø/422Ø/423Ø/424Ø/425Ø/426Ø/427Ø/428Ø/429Ø/430Ø/431Ø/432Ø/433Ø/434Ø/435Ø/436Ø/437Ø/438Ø/439Ø/440Ø/441Ø/442Ø/443Ø/444Ø/445Ø/446Ø/447Ø/448Ø/449Ø/450Ø/451Ø/452Ø/453Ø/454Ø/455Ø/456Ø/457Ø/458Ø/459Ø/460Ø/461Ø/462Ø/463Ø/464Ø/465Ø/466Ø/467Ø/468Ø/469Ø/470Ø/471Ø/472Ø/473Ø/474Ø/475Ø/476Ø/477Ø/478Ø/479Ø/480Ø/481Ø/482Ø/483Ø/484Ø/485Ø/486Ø/487Ø/488Ø/489Ø/490Ø/491Ø/492Ø/493Ø/494Ø/495Ø/496Ø/497Ø/498Ø/499Ø/500Ø/501Ø/502Ø/503Ø/504Ø/505Ø/506Ø/507Ø/508Ø/509Ø/510Ø/511Ø/512Ø/513Ø/514Ø/515Ø/516Ø/517Ø/518Ø/519Ø/520Ø/521Ø/522Ø/523Ø/524Ø/525Ø/526Ø/527Ø/528Ø/529Ø/530Ø/531Ø/532Ø/533Ø/534Ø/535Ø/536Ø/537Ø/538Ø/539Ø/540Ø/541Ø/542Ø/543Ø/544Ø/545Ø/546Ø/547Ø/548Ø/549Ø/550Ø/551Ø/552Ø/553Ø/554Ø/555Ø/556Ø/557Ø/558Ø/559Ø/560Ø/561Ø/562Ø/563Ø/564Ø/565Ø/566Ø/567Ø/568Ø/569Ø/570Ø/571Ø/572Ø/573Ø/574Ø/575Ø/576Ø/577Ø/578Ø/579Ø/580Ø/581Ø/582Ø/583Ø/584Ø/585Ø/586Ø/587Ø/588Ø/589Ø/590Ø/591Ø/592Ø/593Ø/594Ø/595Ø/596Ø/597Ø/598Ø/599Ø/600Ø/601Ø/602Ø/603Ø/604Ø/605Ø/606Ø/607Ø/608Ø/609Ø/610Ø/611Ø/612Ø/613Ø/614Ø/615Ø/616Ø/617Ø/618Ø/619Ø/620Ø/621Ø/622Ø/623Ø/624Ø/625Ø/626Ø/627Ø/628Ø/629Ø/630Ø/631Ø/632Ø/633Ø/634Ø/635Ø/636Ø/637Ø/638Ø/639Ø/640Ø/641Ø/642Ø/643Ø/644Ø/645Ø/646Ø/647Ø/648Ø/649Ø/650Ø/651Ø/652Ø/653Ø/654Ø/655Ø/656Ø/657Ø/658Ø/659Ø/660Ø/661Ø/662Ø/663Ø/664Ø/665Ø/666Ø/667Ø/668Ø/669Ø/670Ø/671Ø/672Ø/673Ø/674Ø/675Ø/676Ø/677Ø/678Ø/679Ø/680Ø/681Ø/682Ø/683Ø/684Ø/685Ø/686Ø/687Ø/688Ø/689Ø/690Ø/691Ø/692Ø/693Ø/694Ø/695Ø/696Ø/697Ø/698Ø/699Ø/700Ø/701Ø/702Ø/703Ø/704Ø/705Ø/706Ø/707Ø/708Ø/709Ø/710Ø/711Ø/712Ø/713Ø/714Ø/715Ø/716Ø/717Ø/718Ø/719Ø/720Ø/721Ø/722Ø/723Ø/724Ø/725Ø/726Ø/727Ø/728Ø/729Ø/730Ø/731Ø/732Ø/733Ø/734Ø/735Ø/736Ø/737Ø/738Ø/739Ø/740Ø/741Ø/742Ø/743Ø/744Ø/745Ø/746Ø/747Ø/748Ø/749Ø/750Ø/751Ø/752Ø/753Ø/754Ø/755Ø/756Ø/757Ø/758Ø/759Ø/760Ø/761Ø/762Ø/763Ø/764Ø/765Ø/766Ø/767Ø/768Ø/769Ø/770Ø/771Ø/772Ø/773Ø/774Ø/775Ø/776Ø/777Ø/778Ø/779Ø/780Ø/781Ø/782Ø/783Ø/784Ø/785Ø/786Ø/787Ø/788Ø/789Ø/790Ø/791Ø/792Ø/793Ø/794Ø/795Ø/796Ø/797Ø/798Ø/799Ø/800Ø/801Ø/802Ø/803Ø/804Ø/805Ø/806Ø/807Ø/808Ø/809Ø/810Ø/811Ø/812Ø/813Ø/814Ø/815Ø/816Ø/817Ø/818Ø/819Ø/820Ø/821Ø/822Ø/823Ø/824Ø/825Ø/826Ø/827Ø/828Ø/829Ø/830Ø/831Ø/832Ø/833Ø/834Ø/835Ø/836Ø/837Ø/838Ø/839Ø/840Ø/841Ø/842Ø/843Ø/844Ø/845Ø/846Ø/847Ø/848Ø/849Ø/850Ø/851Ø/852Ø/853Ø/854Ø/855Ø/856Ø/857Ø/858Ø/859Ø/860Ø/861Ø/862Ø/863Ø/864Ø/865Ø/866Ø/867Ø/868Ø/869Ø/870Ø/871Ø/872Ø/873Ø/874Ø/875Ø/876Ø/877Ø/878Ø/879Ø/880Ø/881Ø/882Ø/883Ø/884Ø/885Ø/886Ø/887Ø/888Ø/889Ø/890Ø/891Ø/892Ø/893Ø/894Ø/895Ø/896Ø/897Ø/898Ø/899Ø/900Ø/901Ø/902Ø/903Ø/904Ø/905Ø/906Ø/907Ø/908Ø/909Ø/910Ø/911Ø/912Ø/913Ø/914Ø/915Ø/916Ø/917Ø/918Ø/919Ø/920Ø/921Ø/922Ø/923Ø/924Ø/925Ø/926Ø/927Ø/928Ø/929Ø/930Ø/931Ø/932Ø/933Ø/934Ø/935Ø/936Ø/937Ø/938Ø/939Ø/940Ø/941Ø/942Ø/943Ø/944Ø/945Ø/946Ø/947Ø/948Ø/949Ø/950Ø/951Ø/952Ø/953Ø/954Ø/955Ø/956Ø/957Ø/958Ø/959Ø/960Ø/961Ø/962Ø/963Ø/964Ø/965Ø/966Ø/967Ø/968Ø/969Ø/970Ø/971Ø/972Ø/973Ø/974Ø/975Ø/976Ø/977Ø/978Ø/979Ø/980Ø/981Ø/982Ø/983Ø/984Ø/985Ø/986Ø/987Ø/988Ø/989Ø/990Ø/991Ø/992Ø/993Ø/994Ø/995Ø/996Ø/997Ø/998Ø/999Ø/1000Ø
- 6. Enclosure Size**
 - A = CP3B Single, 18" x 17" x 17" (TYPE B)
 - B = CP3B Double, 24" x 17" x 17" (TYPE B)
 - C = CP3B 24" x 17" x 17" (TYPE B)
 - D = CP3B 24" x 17" x 17" (TYPE B)
 - E = CP3B 24" x 17" x 17" (TYPE B)
 - F = CP3B 24" x 17" x 17" (TYPE B)
 - G = CP3B 24" x 17" x 17" (TYPE B)
 - H = CP3B 24" x 17" x 17" (TYPE B)
 - I = CP3B 24" x 17" x 17" (TYPE B)
 - J = CP3B 24" x 17" x 17" (TYPE B)
 - K = CP3B 24" x 17" x 17" (TYPE B)
 - L = CP3B 24" x 17" x 17" (TYPE B)
 - M = CP3B 24" x 17" x 17" (TYPE B)
 - N = CP3B 24" x 17" x 17" (TYPE B)
 - O = CP3B 24" x 17" x 17" (TYPE B)
 - P = CP3B 24" x 17" x 17" (TYPE B)
 - Q = CP3B 24" x 17" x 17" (TYPE B)
 - R = CP3B 24" x 17" x 17" (TYPE B)
 - S = CP3B 24" x 17" x 17" (TYPE B)
 - T = CP3B 24" x 17" x 17" (TYPE B)
 - U = CP3B 24" x 17" x 17" (TYPE B)
 - V = CP3B 24" x 17" x 17" (TYPE B)
 - W = CP3B 24" x 17" x 17" (TYPE B)
 - X = CP3B 24" x 17" x 17" (TYPE B)
 - Y = CP3B 24" x 17" x 17" (TYPE B)
 - Z = CP3B 24" x 17" x 17" (TYPE B)

MILBANK Commercial Pedestal

The service pedestal shall be provided with the following equipment:

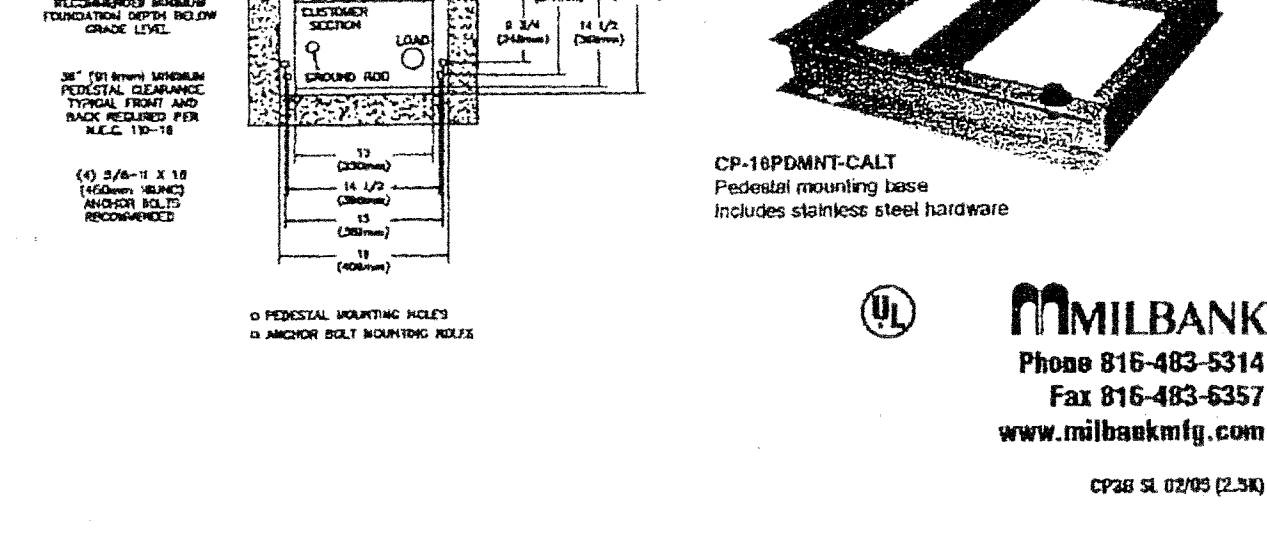
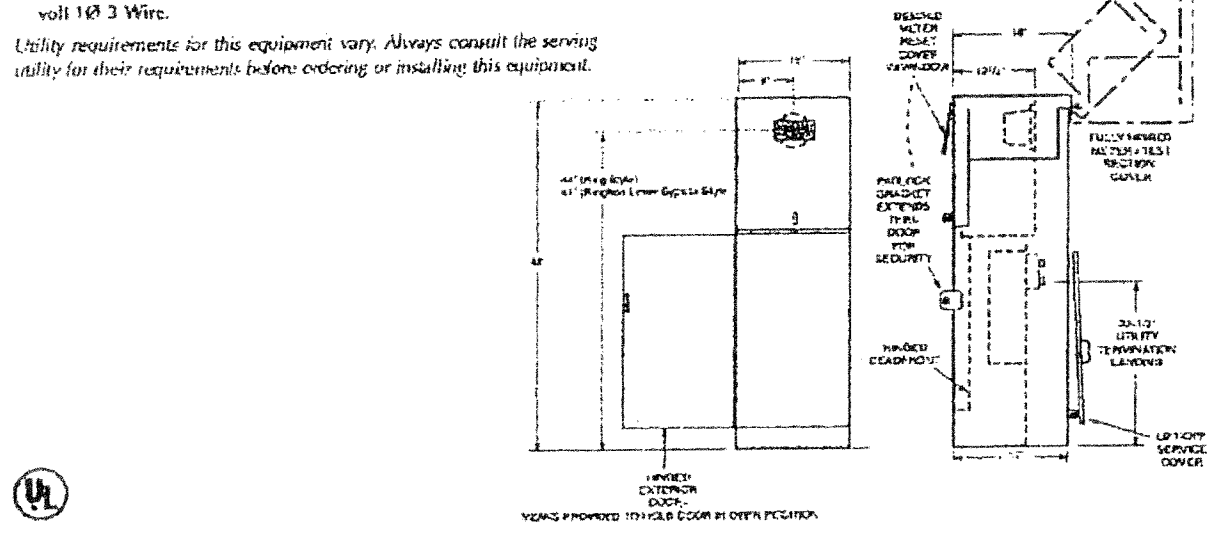
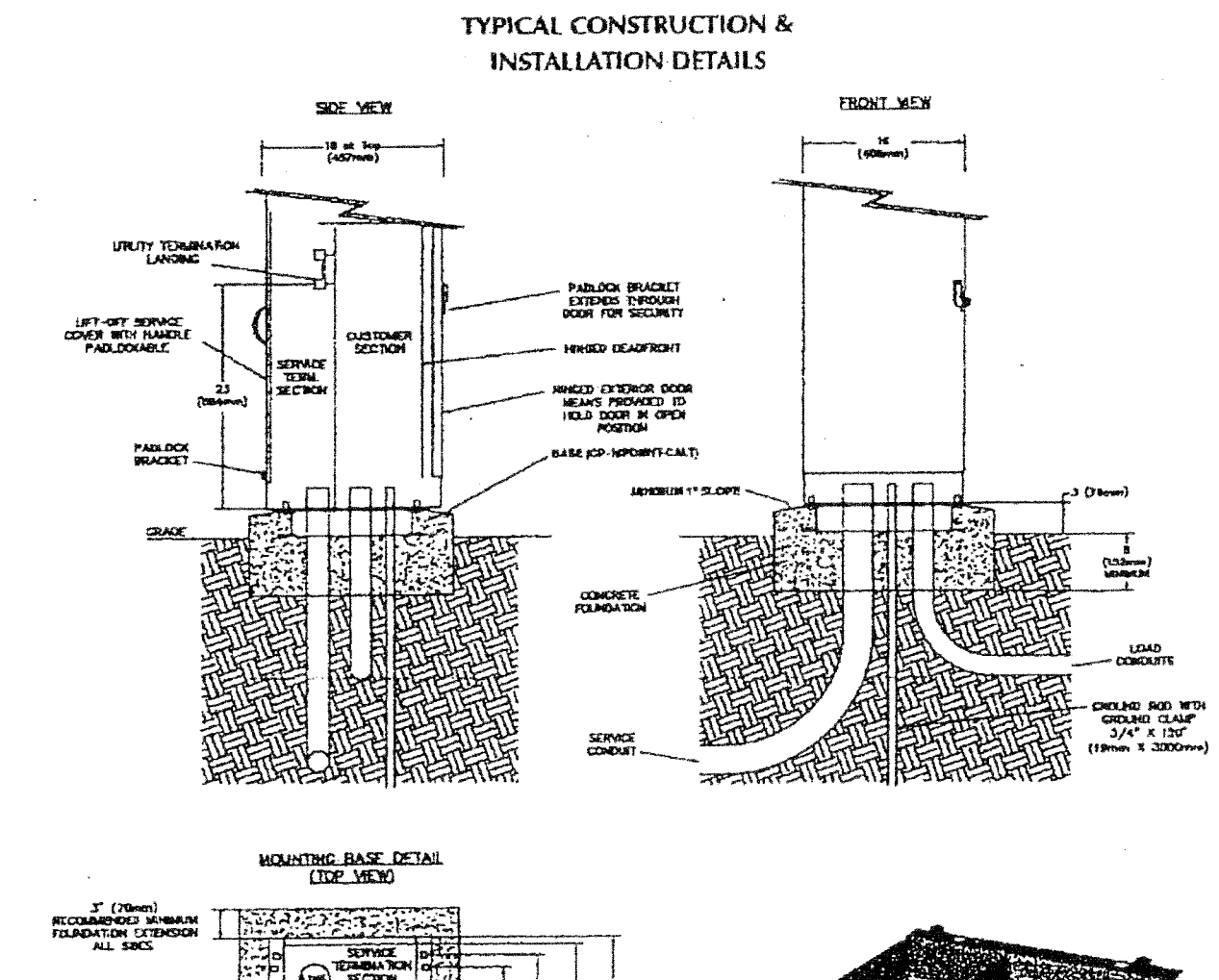
- A 200 amp Meter Socket type that can be equipped with optional field-installable fifth terminal kit.
- A Main CB amp main circuit breaker that plugs onto a 16-circuit switched load center. This breaker shall be identified by an engraved plaque.
- The service pedestal shall be rated for operation at IKAC amp interrupting capacity. The provided disconnection shall list circuit breaker combinations to be used for de-rated operation.
- A 16-circuit load center with all copper bus for loads not to be switched by a photoelectric cell (switched load center). This load center shall be removable by external access. Hinges shall be stainless steel and of the continuous pinne hinge type.
- A 15 amp plug-in circuit breaker installed on the un-switched load center to provide power and protection for control circuits. This breaker shall be identified by an engraved plaque.
- A pre-wired hand lock photoelectric cell receptor.
- A polycarbonate photoelectric window and a glare shield.
- Wiring and connector provisions to add an optional 24-hour or 7-day time clock circuit. Interconnection of the time clock circuit shall be accomplished through a pre-wired connector assembly and shall not require any cutting or stripping of wires in the use of any tools.
- A rotary switch, labeled "Hand-Off-Auto," located inside the exterior door and accessible at the customer section. This switch shall energize all controlled loads in the "Hand" position, de-energize all controlled loads in the "Off" position, and permit operation of all controlled loads by the photoelectric cell used time clock, if used in the "Auto" position.
- A contactor amp plug-in circuit breaker installed on the un-switched load center to provide power and protection for contactor-controlled circuits. This breaker shall be identified by an engraved plaque.
- A contactor amp 2-pole electrically held lighting contactor with 120 volt AC coil. Siemens type 12N to control loads to be switched loads.
- A 16-circuit load center with all copper bus for loads to be switched by a photoelectric cell (switched load center). This load center shall be removed by external access. Hinges shall be stainless steel and of the continuous pinne hinge type.
- All distribution and control equipment shall be factory wired with 600 volt wire sized to NEC and UL requirements.

CP3B "SL" Series Specifications

The service pedestal shall be provided with the following equipment:

- A 200 amp Meter Socket type that can be equipped with optional field-installable fifth terminal kit.
- A Main CB amp main circuit breaker that plugs onto a 16-circuit switched load center. This breaker shall be identified by an engraved plaque.
- The service pedestal shall be rated for operation at IKAC amp interrupting capacity. The provided disconnection shall list circuit breaker combinations to be used for de-rated operation.
- A 16-circuit load center with all copper bus for loads not to be switched by a photoelectric cell (switched load center). This load center shall be removable by external access. Hinges shall be stainless steel and of the continuous pinne hinge type.
- A 15 amp plug-in circuit breaker installed on the un-switched load center to provide power and protection for control circuits. This breaker shall be identified by an engraved plaque.
- A pre-wired hand lock photoelectric cell receptor.
- A polycarbonate photoelectric window and a glare shield.
- Wiring and connector provisions to add an optional 24-hour or 7-day time clock circuit. Interconnection of the time clock circuit shall be accomplished through a pre-wired connector assembly and shall not require any cutting or stripping of wires in the use of any tools.
- A rotary switch, labeled "Hand-Off-Auto," located inside the exterior door and accessible at the customer section. This switch shall energize all controlled loads in the "Hand" position, de-energize all controlled loads in the "Off" position, and permit operation of all controlled loads by the photoelectric cell used time clock, if used in the "Auto" position.
- A contactor amp plug-in circuit breaker installed on the un-switched load center to provide power and protection for contactor-controlled circuits. This breaker shall be identified by an engraved plaque.
- A contactor amp 2-pole electrically held lighting contactor with 120 volt AC coil. Siemens type 12N to control loads to be switched loads.
- A 16-circuit load center with all copper bus for loads to be switched by a photoelectric cell (switched load center). This load center shall be removed by external access. Hinges shall be stainless steel and of the continuous pinne hinge type.
- All distribution and control equipment shall be factory wired with 600 volt wire sized to NEC and UL requirements.

CP3B "SL" Series Installation



PANEL A, B, C AND D MILBANK LIGHTING CONTROL PEDESTAL WITH 1 UNSWITCHED & 1 SWITCHED 8 CIRCUIT LOAD CENTER

MILBANK LIGHTING CONTROL PEDESTAL WITH 1 UNSWITCHED & 1 SWITCHED 8 CIRCUIT LOAD CENTER TO HAVE (2) 2Ø/2 AND (2) 2Ø/4 BREAKERS. PROVIDE UNIT WITH PHOTOCELL AND 7 DAY TIMECLOCK. VERIFY ALL REQUIREMENTS WITH MANUFACTURER AND WESTAR PRIOR TO BID. PROVIDE CONCRETE BASE AND MOUNTING PER MANUFACTURERS RECOMMENDATIONS.

VOLTAGE

- /120
- /208
- /220
- /240
- /277
- /480
- /MULTI
- ADVISE
- WIRE TO ?

LIGHT SOURCE AND WATTAGE

- INCANDESCENT
- 50 MH
- 75 MH
- 100 MH
- 150 MH
- 250 MH
- 50 MH
- 70 MH
- 100 MH
- 150 MH
- 175 MH
- 250 MH
- 35 HPS
- 50 HPS
- 70 HPS
- 100 HPS
- 150 HPS
- 250 HPS

1 FUSE

- 120, 277
- 208, 240, 480
- MULTI
- WITH LAMP

Advise Finish

- Swedish Iron
- Verde Green
- Park Green
- Black
- Architectural Medium Bronze
- CUSTOM FINISH

LIGHT FIXTURE SA:
#6130D/3T12T4/LR/1Ø/20VMMH-MT-24Ø/REB/CSA/MED SOCKET/BK

LIGHT FIXTURE SB:
#6130D/3T12T4/LR/1Ø/20VMMH-MT-24Ø/REB/CSA/MED SOCKET/BK

STERNBERG SINCE 1923

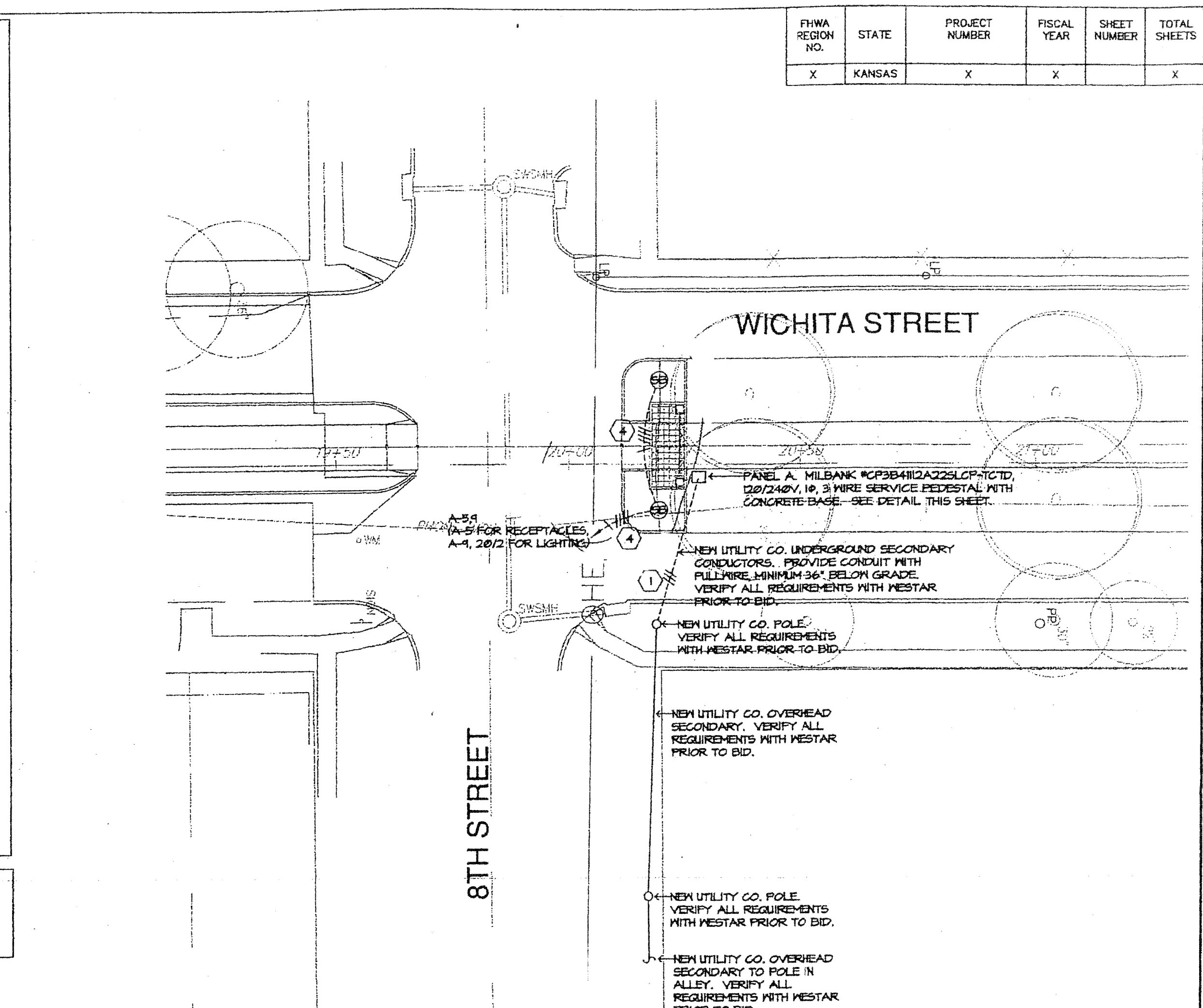
LIGHT FIXTURE SA
NO SCALE

LIGHT FIXTURE SB
NO SCALE

John Vogel
11701
2029
PROFESSIONAL ENGINEER
KANSAS

Stefan
Boegli
Associates

Electrical Engineering and Design
349 S. Hydraulic
Wichita, Ks. 67211-1908
(316) 264-3061
Fax: (316) 264-3542
05023-041



8TH & WICHITA STREETS SITE LIGHTING PLAN

SCALE: 1"=20' HOR.

FEEDER SCHEDULE

SV/A	FEEDER	SETS	QUANT. PER SET	CONDUCTORS SIZE	GROUND SIZE	ISOLATED PER SET	CONDUIT PER SET
1	1	1	1	CABLE BY WESTAR			2"
2	1	2	2	#10	#12		1"
3	1	2	2	#10	#12		1"
4	1	4	4	#10	#12		1"

STERNBERG SINCE 1923

LIGHT FIXTURE SA
NO SCALE

LIGHT FIXTURE SB
NO SCALE

Ruggles & Bohm, P.A.
Engineering, Surveying, Land Planning

924 North Main
Wichita, Kansas 67203
www.rtkansas.com

(316) 264-8008
(316) 264-4621 fax
E-mail: info@rtkansas.com

Electrical Engineering and Design
349 S. Hydraulic
Wichita, Ks. 67211-1908
(316) 264-3061
Fax: (316) 264-3542
05023-041

DRAWING FILE PROJECT NUMBER DATE

DESIGN DRAWN REVIEW UTILITY DATE

SHEET 1 OF 3