

STORM WATER DRAIN #343 CEDAR VIEW VILLAGE ADDITION

PROJECT NO. 468-84463

THE CITY OF WICHITA, KANSAS
JAMES L. ARMOUR, CITY ENGINEER

OCA NO. 751474

GENERAL NOTES

- UNLESS SHOWN OR STATED OTHERWISE ON THESE DRAWINGS, MATERIALS AND CONSTRUCTION SHALL BE IN ACCORDANCE WITH CITY OF WICHITA STANDARD SPECIFICATIONS.
- CONTRACTOR WILL BE REQUIRED TO PROVIDE A MINIMUM ADVANCE NOTICE OF SEVENTY-TWO (72) HOURS TO UTILITY COMPANIES PRIOR TO STARTING ANY EXCAVATION AS FOLLOWS:
KANSAS ONE-CALL 1-800-344-7233
OR LOCAL (WICHITA) 687-2470
THE CONTRACTOR MUST NOTIFY THE FOLLOWING IN CASE OF EMERGENCY:
COX COMMUNICATIONS (CABLE) 262-0661
WESTAR (ELECTRIC) 261-6512
KANSAS GAS SERVICE (GAS) 832-3101
AT&T (TELEPHONE) 800-870-8390
CITY OF WICHITA WATER & SEWER 262-6000
AQUILA (GAS) 800-303-0357
- THE CONTRACTOR SHALL BE RESPONSIBLE FOR PRESERVING PROPERTY IRONS. THE CONTRACTOR WILL BE REQUIRED TO RE-ESTABLISH ANY PROPERTY IRONS WHICH ARE DAMAGED OR DESTROYED BY HIS CONSTRUCTION OPERATIONS. SUCH IRONS SHALL BE RE-ESTABLISHED BY A LICENSED LAND SURVEYOR IN ACCORDANCE WITH STATE LAWS.
- EXISTING UTILITIES AND THEIR LOCATIONS, AS SHOWN ON THE PLANS REPRESENT THE BEST INFORMATION OBTAINABLE FOR DESIGN. LOCATION INFORMATION HAS BEEN OBTAINED FROM THE VARIOUS UTILITY COMPANIES AND IS EITHER FROM COMPANY RECORD DRAWINGS OR COMPANY PROVIDED FIELD LOCATIONS. THE PLAN LOCATIONS SHOWN ARE NOT GUARANTEED. ADDITIONAL EXISTING UTILITIES MAY ALSO BE ENCOUNTERED.
- RUBBLE FROM THE REMOVAL OF MISCELLANEOUS STRUCTURES AND EXCESS EXCAVATION WHICH IS TO BE WASTED SHALL BE DISPOSED OF ON SITES TO BE PROVIDED BY THE CONTRACTOR. THESE SITES SHALL BE APPROVED BY THE ENGINEER AS TO SUITABILITY, APPEARANCE AND SITE LOCATION. LOCATIONS THAT, IN THE OPINION OF THE ENGINEER, WILL LEAVE AN UNSIGHTLY APPEARANCE WILL NOT BE APPROVED. ALL DISPOSAL SITES MUST BE APPROVED BY THE KANSAS DEPARTMENT OF HEALTH AND ENVIRONMENT. MATERIAL EITHER STOCKPILED OR DISPOSED OF IN A FLOOD PLAIN WOULD REQUIRE A KANSAS STATE BOARD OF AGRICULTURE PERMIT. ANY MATERIAL DUMPED IN WATERS OF THE UNITED STATES OR WETLANDS IS SUBJECT TO U.S. CORPS OF ENGINEERS PERMITTING REGULATIONS. ANY MATERIAL BURIED OR STOCKPILED BEYOND APPROVED CONSTRUCTION LIMITS WOULD REQUIRE ADDITIONAL ARCHAEOLOGICAL INVESTIGATIONS UNLESS BURIED IN A PREVIOUSLY APPROVED BORROW LOCATION.
- ALL COMPACTION OF EARTHWORK SHALL BE 95% STANDARD DENSITY IN ACCORDANCE WITH ASTM D-698.
- OTHER CONSTRUCTION MAY BE UNDER WAY SIMULTANEOUSLY WITH THIS PROJECT. THE CONTRACTOR SHALL COORDINATE WITH ANY CONTRACTORS CONSTRUCTING OTHER PORTIONS OF THE PROJECT.
- EXCESS EXCAVATION SHALL BE STOCKPILED ON-SITE IN A LOCATION APPROVED BY THE FIELD ENGINEER.
- STAKING, TESTING AND INSPECTION WILL BE PROVIDED BY THE CITY OF WICHITA.

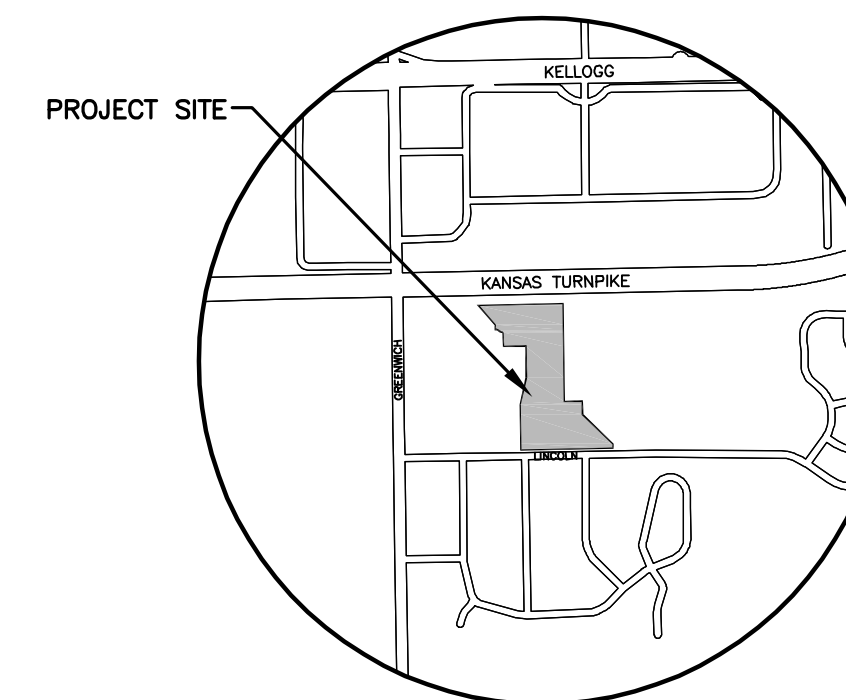
GENERAL GRADING NOTES:

- THIS IS DESIGN GRADING. ALL GRADES SHALL BE CONTOURED SMOOTHLY WITH GENTLE ROUNDING/SHAPING OF ALL AFFECTED LAND SURFACES. ABRUPT TRANSITIONS AT THE TOP OF SLOPES WHERE PROPOSED GRADES MEET EXISTING ARE NOT ACCEPTABLE. SURVEY STAKES FOR POND GRADING ARE FOR GENERAL GRADING PURPOSES ONLY. NOT ALL SLOPES ARE CONSTANT AND THEREFORE THE GRADING PLANS SHALL BE REFERRED TO FOR FINAL GRADE SHAPING. ALL BERMS & POND EDGES SHALL BE FINAL GRADED/SHAPED WITH A TRACK DOZER, NOT A BLADE. THE GRADING SHALL BE APPROVED BY MKEC'S LANDSCAPE ARCHITECT PRIOR TO THE ADDITION OF THE TOPSOIL LAYER.
- A 6" LAYER OF TOPSOIL SHALL BE STRIPPED IN ALL AREAS OF CUT AND SAVED BACK FOR REPLACEMENT IN RESERVE AREAS INDICATED. ANY EXCESS TOPSOIL SHALL BE SEPARATELY STOCK PILED ON-SITE AT AN APPROVED LOCATION. NO TOPSOIL SHALL BE PLACED ON LOTS OR WITHIN STREET R/W UNLESS SPECIFICALLY NOTED.
- TOPSOIL SHALL BE REPLACED AT A DEPTH OF 6" IN ALL POND RESERVE AREAS. THE FINISHED GRADE SHOWN ON THE PLANS INDICATES THE SURFACE ELEVATION AFTER THE TOPSOIL LAYER HAS BEEN PLACED.
- AS THE PROJECT NEARS COMPLETION, THE CONTRACTOR SHALL RIP (SCARIFY) ALL HAUL ROADS WITH AN AGRICULTURAL IMPLEMENT INTENDED FOR SUCH PURPOSES TO A DEPTH OF 18". MULTIPLE PASSES MAY BE NECESSARY TO THOROUGHLY ALEVIATE COMPACTION.

EARTHWORK SUMMARY

TOTAL EXCAVATION	8,625 C.Y.
COMPACTED FILL (95% DENSITY)	8,625 C.Y.

NOTE: THESE QUANTITIES ARE ESTIMATES ONLY. CONTRACTOR SHALL VERIFY FOR BIDDING.



VICINITY MAP

INDEX TO DRAWINGS

SHEET NO.	DESCRIPTION
1	TITLE SHEET
2	TYPICAL GRADING SECTIONS
3	GRADING PLAN
4	EROSION CONTROL PLAN
5-9	BMP DETAILS
10-11	FINAL PLAT

BENCHMARKS

- BM#1 Chiseled square on East end of North headwall of RCB, 31' East and 11' North of the Center of Section 27, Township 27 South, Range 2 East
Elev. = 1346.58 NGVD 29
- BM#2 Chiseled square on southeast corner of curb inlet on north side of Lincoln, 260' west of centerline Bristol.
Elev. = 1340.96

MKEC
ENGINEERING
CONSULTANTS, INC.
411 N. WEBB ROAD
WICHITA, K.S. 67206
316-684-9600

PRELIMINARY
NOT FOR
CONSTRUCTION

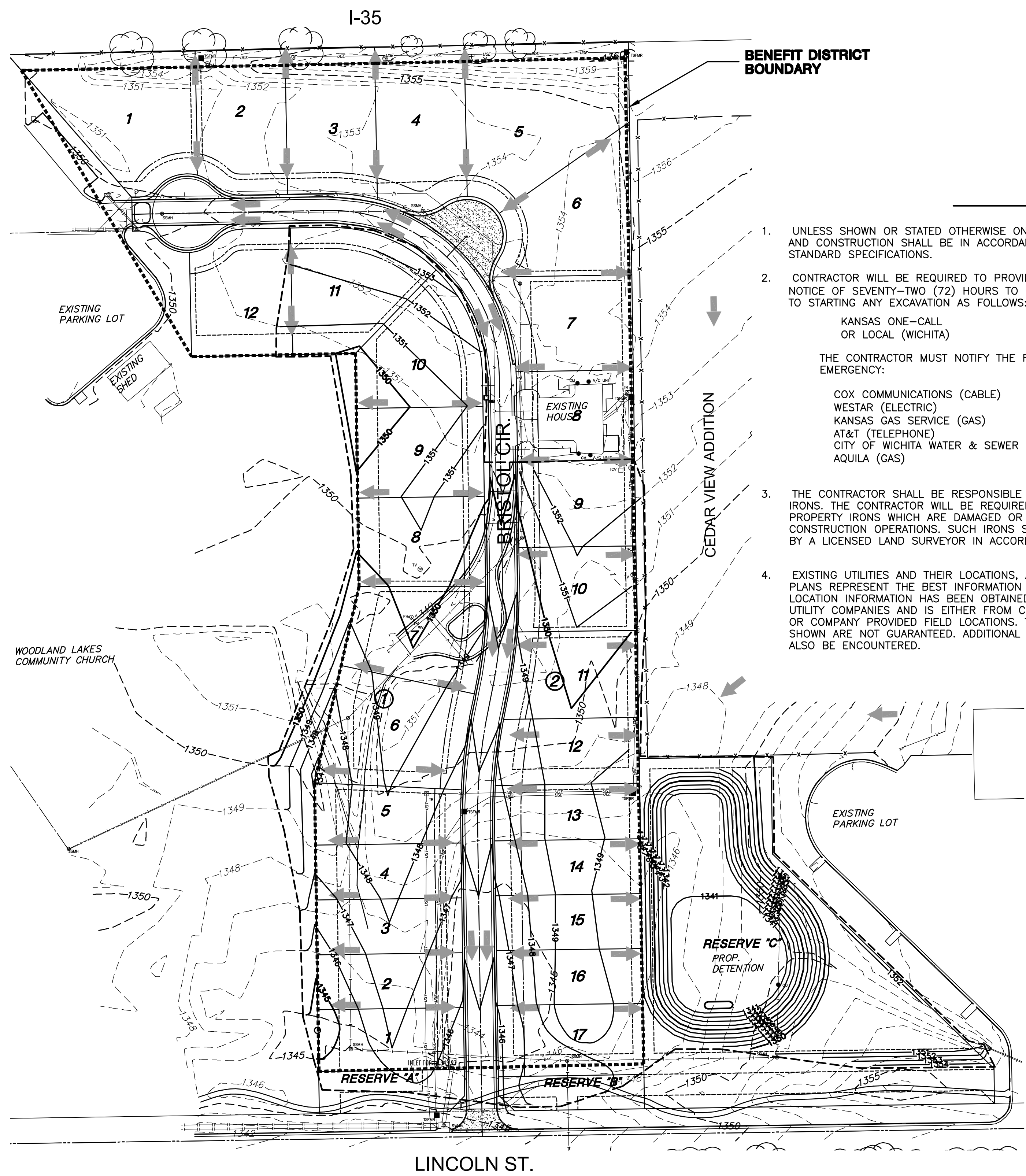
GRADING PLANS FOR
CEDAR VIEW VILLAGE ADDITION

TITLE SHEET
SHEET TITLE
468-84463
PROJECT NUMBER

SRS / TKL / MAB
DESIGNED DRAWN CHECKED

ISSUED August 08
REVISED 9-11-08

SHEET NO.
1 of 11



PLOTTER: Tandy, September 16, 2008 @ 01:02PM

J:\CIVIL\06189\DWG\GRD\06189_G1.DWG