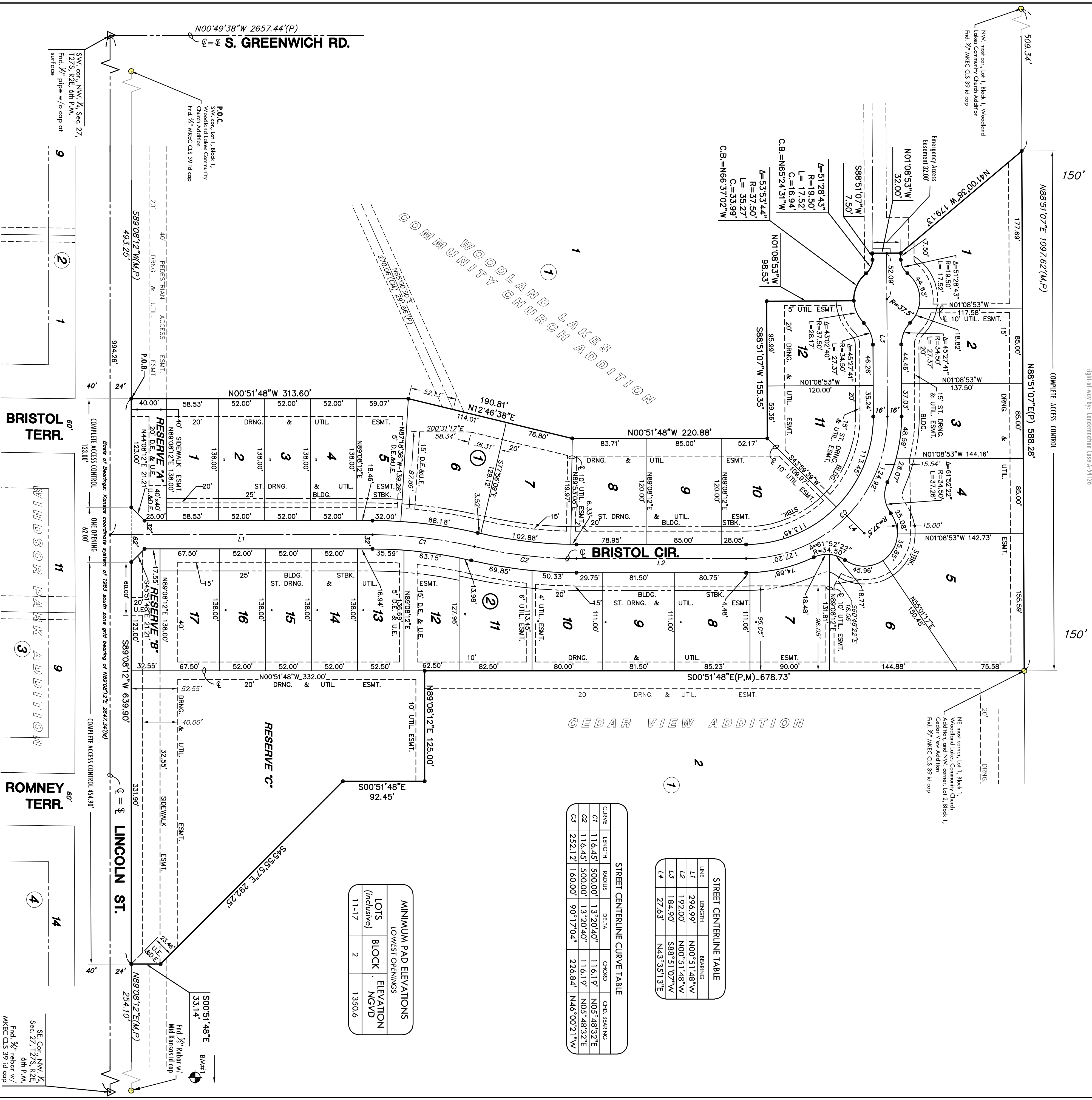


FINAL PLAT

CEDAR VIEW VILLAGE ADDITION

AN ADDITION TO WICHITA, SEDGWICK COUNTY, KANSAS

Kansas Turnpike Authority
Right-of-Way By Confirmation Case A-34176



LINE	LENGTH	BEARING
L1	296.97'	N00°51'48"W
L2	192.00'	N00°51'48"W
L3	184.90'	S88°51'07"W
L4	27.63'	N43°35'13"E

CURVE	LENGTH	RADIUS	DELTA	CHORD	CHD. BEARING
C1	116.45'	500.00'	13°20'40"	116.19'	N05°48'32"E
C2	116.45'	500.00'	13°20'40"	116.19'	N05°48'32"E
C3	252.12'	1000.00'	90°17'04"	226.84'	N46°00'21"W

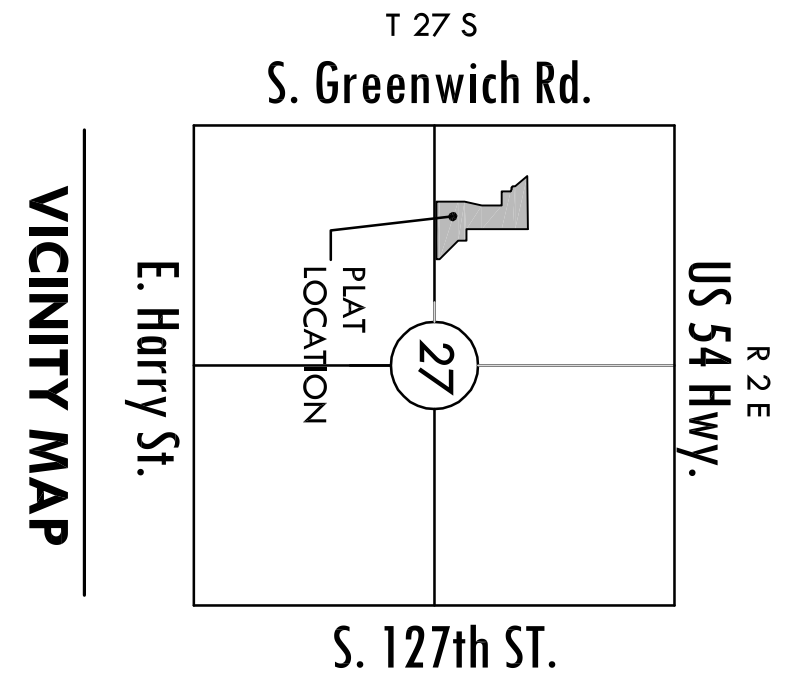
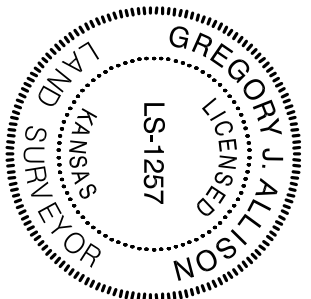
LOTS BLOCK	ELEVATION NGVD
1-17	2
	1350.6

LEGEND

- Date of Survey: May, 2007
- △ = Section Corner Monument Found
 - = Found Survey Monument
 - See annotation
 - = Set 3/8" Bar w/ MKEC
 - = C/S 3/8" Id. cap
 - (M) = Measured
 - (P) = Plotted
 - (D) = Described or record description
 - ⊕ = Section line
 - L = Line dimensions in table above
 - C = Curve dimensions in table above

BENCH MARK

BM#1
Square cut on east end of north headwall of RCB 31 east end 11 feet north of the center of Sec. 27 127S, R2E.
Elev. = 1346.58 NGVD 29



Basis of Bearings: Kansas coordinate system of 1983 south zone grid bearing of N89°08'12"E along the S. line of SW 1/4, Sec. 27, 127S, R2E, 6th P.M.

1
2

MKEC
ENGINEERING
CONSULTANTS, INC.
411 N. WEBB ROAD
WICHITA, KS. 67206
316-684-9600