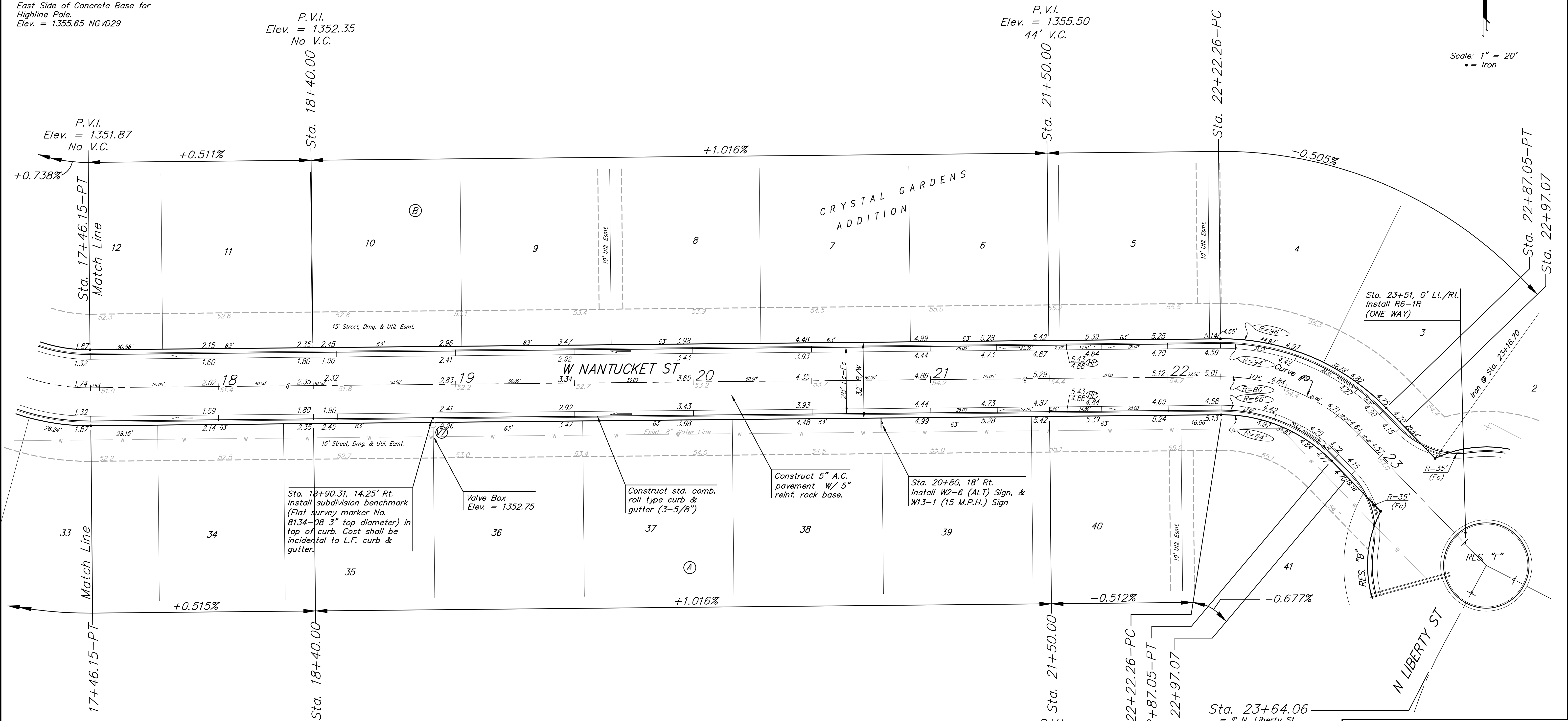
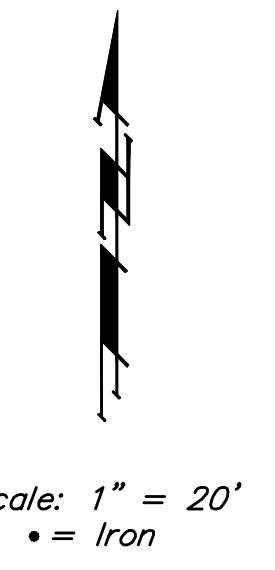


Benchmark:
 "□" Cut On Top of Curb, West Side of Forestview, East of Fire Hydrant, and Along Easterly Extension of the South Line of Lot 2, Block A, Liberty Park 2nd Addition.
 Elev. = 1347.62 NGVD29

City of Wichita Benchmark Southwest Corner of 13th ST N and 135th ST W 30' South and 35' West Intersection. East Side of Concrete Base for Highline Pole.
 Elev. = 1355.65 NGVD29



P.V.I.
 Elev. = 1352.35
 No V.C.

P.V.I.
 Elev. = 1355.50
 44' V.C.

P.V.I.
 Elev. = 1351.87
 No V.C.

P.V.I.
 Elev. = 1355.50
 44' V.C.

P.V.I.
 Elev. = 1352.35
 No V.C.

P.V.I.
 Elev. = 1355.14
 No V.C.

Curve #9
 Curve Data Based on Centerline
 Rad. = 80' Delta = 46° 24' 15" Tangent = 34.29'
 Arc = 64.79' L.C. = 63.04' Def./Ft. = 21.48673 Min.

Station	Arc	FACE CHORD LENGTHS		Defl.	T. Defl.
		8' Lt.	8' Rt.		
22+22.26	-	-	-	0'00"00"	0'00"00"
22+25.00	2.74'	3.49'	1.99'	0'58"52"	0'58"52"
22+50.00	25.00'	31.75'	18.05'	8'57"11"	9'56"03"
22+75.00	25.00'	31.75'	18.05'	8'57"10"	18'53"13"
22+87.05	12.05'	15.35'	8.73'	4'18"55"	23'12"08"

NOTE: ROLL TYPE CURB & GUTTER TO BE CONSTRUCTED ON THE PAVEMENT SHOWN ON THIS SHEET. TOP OF CURB ELEVATIONS ARE GIVEN FOR FULL HEIGHT CURB.

	Crystal Gardens Addition	
	W. NANTUCKET ST. STA. 17+46.15 TO STA. 23+64.06	
Baughman Company, P.A. 315 Ellis St. Wichita, KS 67211 P 316-262-7271 F 316-262-0149		
ENGINEERING SURVEYING PLANNING LANDSCAPE ARCHITECTURE		
PROJECT NUMBER 472-84606	DESIGN JAK	DRAWN TMS
REVISIONS:	APPROVED	DATE 9/09/08
	SCALE Noted	SHEET
		11 OF 34