

# PRIVATE STORM SEWER

LOT 1, BLOCK 1, SISTERS OF ST. JOSEPHS 2ND ADDITION  
 TO SERVE THE SISTERS OF ST. JOSEPHS NEW APARTMENT BUILDING  
 PRIVATE PROJECT NUMBER 1924 PPS (607861)

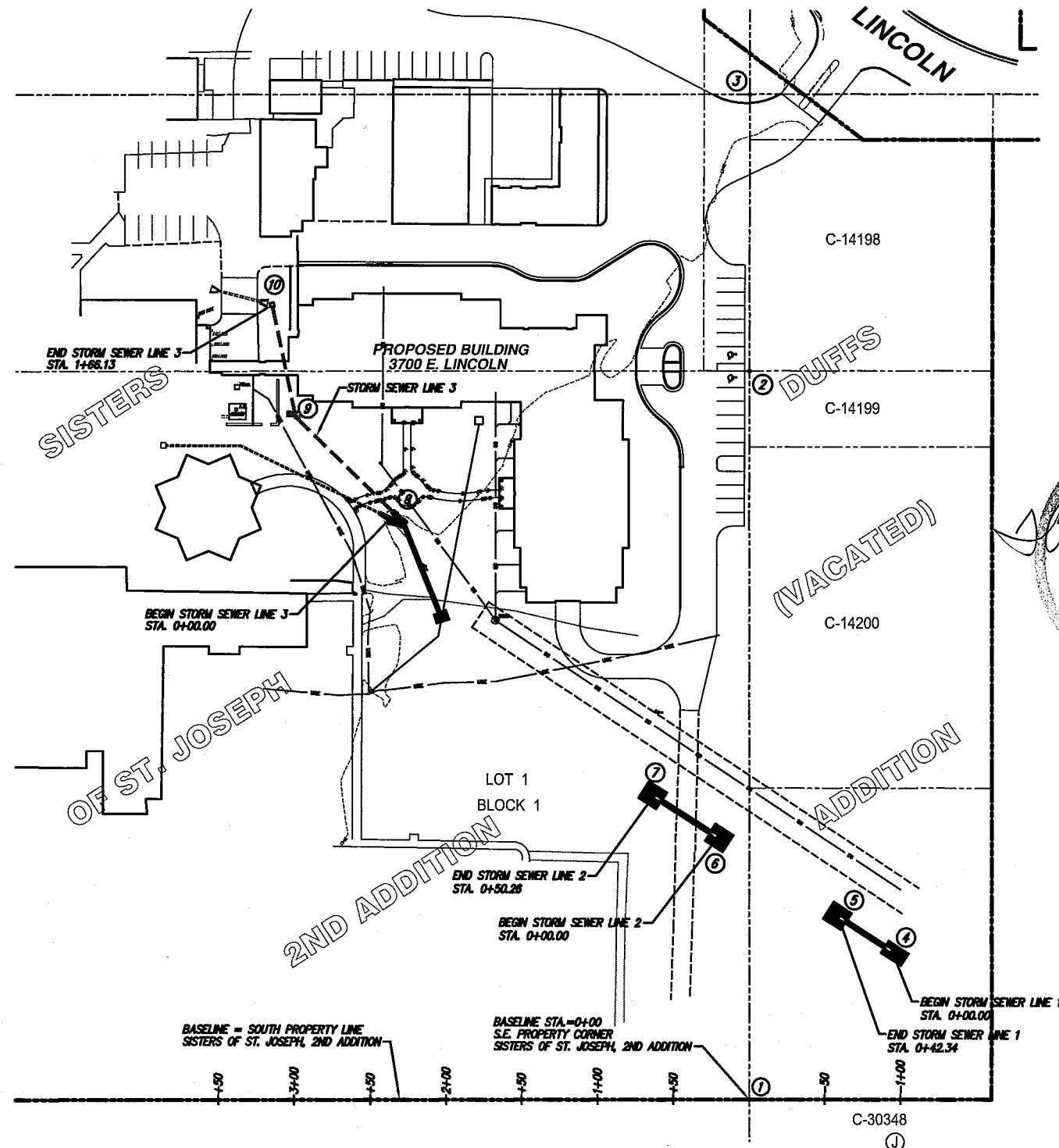
As Built Plans:  
 CONTRACTOR: McCullough Excavation  
 INSPECTOR: Larry Gann, K E Miller Eng.  
 .PDF by: NWS, 10-07-08

## GENERAL NOTES

- Contractor will be required to provide a minimum advance notice of forty-eight (48) hours to utility companies prior to starting any excavation as follows:  
 Kansas One-Call 687-2470  
 The Contractor must notify the following in case of an emergency:  
 Cox Communications  
 Kansas Gas Service  
 Westar  
 Aquila Energy  
 Southwestern Bell Telephone Company  
 City of Wichita Water Department  
 City of Wichita Sewer Maintenance
- Existing utilities and their location, as shown on the plans, represent the best information obtainable for design. Location information has been obtained from the various utility companies and is either from company record drawings or company-provided field locations. The Contractor will be required to work around existing utilities within the right-of-way which do not conflict with proposed construction.
- This project is to be constructed in accordance with City of Wichita Standard Specifications for the Construction of City Projects, and Policy on Construction of Public Works Improvements by Private Contract.
- No work shall begin on this project before required bonds are submitted to the City of Wichita, and the project inspector has been notified.
- All areas of public R/W disturbed by construction of this project are to be restored in accordance with Administrative Regulation AR 78 of the City of Wichita.
- Trench backfill to be compacted to minimum of 98% std. density (ASTM D-698) to existing grade.
- Traffic will not be affected by construction of this project.
- Erosion control will be handled by the General Contractor as part of the erosion control master plan for this site.

## COORDINATE CONTROL TABLE

CONTROL NO.	DESCRIPTION	NORTHING	EASTING
1	S.E. COR. LOT 1, BLOCK 1 (3/4" LP.)	19337.44	20000.82
2	3/4" LP.	19817.49	20000.20
3	3/4" LP.	20000.00	20000.00
4	24" END SECTION	19435.07	20095.31
5	24" END SECTION	19457.91	20059.66
6	24" END SECTION	19509.95	19980.10
7	24" END SECTION	19537.07	19937.78
8	15" END SECTION	19723.22	19766.81
9	CENTER MANHOLE W/ BEEHIVE INLET	19786.71	19701.70
10	CENTER 2'x2' DROP INLET	19860.28	19686.19

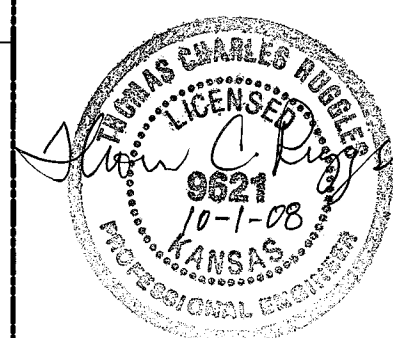


## INDEX OF SHEETS

- (CITY SUBMITTAL INDEX)
- INDEX SHEET
  - SITE GRADING PLAN
  - SITE GRADING PLAN
  - STORM SEWER PLAN & PROFILE (LINE 1 & 2)
  - STORM SEWER PLAN & PROFILE (LINE 3)
  - SHALLOW TYPE P MANHOLE
  - 2'x2' DROP INLET

## BENCHMARKS

CITY OF WICHITA  
 BLUFF & LINCOLN -IN TURN ISLAND  
 28.5 W. OF E. BLUFF, 44.5 S. OF E. MORRIS  
 TO EAST 24' S.W. OF L.P.  
 ELEV.=1348.65

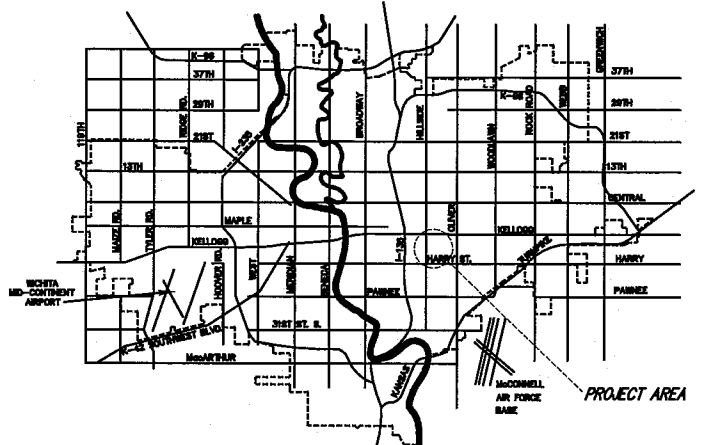


APPROVED AS NOTED  
 BY CITY ENGINEER OF WICHITA

Sanitary Sewers \_\_\_\_\_  
 Storm Sewers *Juliana Kellman 10-1-08*  
 Driveway Approaches \_\_\_\_\_  
 Water Mains \_\_\_\_\_  
 Paving \_\_\_\_\_

NOTE TO CONTRACTORS

Inspection and testing for this project are to be provided by a Licensed Consulting Engineering Firm under contract with the Owner/Developer. Said inspection to be in accordance with the City of Wichita standard construction engineering practices and certified by a Licensed Professional Engineer. No work shall be performed in dedicated easements or public right-of-way by the Contractor without such inspection, nor shall any work be commenced without written authorization by the City Engineer.



CITY OF WICHITA, KANSAS  
 JAMES L. ARMOUR, P.E., CITY ENGINEER

Ruggles & Bohm, P.A.  
 Engineering, Surveying, Land Planning  
 924 North Main (316) 264-8008  
 Wichita, Kansas 67203 (316) 264-4621 fax  
 www.rbkansas.com E-mail: info@rbkansas.com