

- S 1/4 Cor., Sec. 3, T27S, R2E (201)
1. Found 5/8" Bar with Forgy Cap.
 2. Northeast Cap Bolt of Signal Light Pole. 14.28' S
 3. Chiseled "+" Center of West Edge Traffic Manhole Base. 20.20' E
 4. Chiseled "+" in Top of Curb of Island Nose. 23.90' W
 5. Chiseled "+" in Top of Curb. 14.15' N

SE 1/4, Sec 3, T27S, R2E

Scale: 1"=20'

Sta. 123+96.25 BEGIN Construction

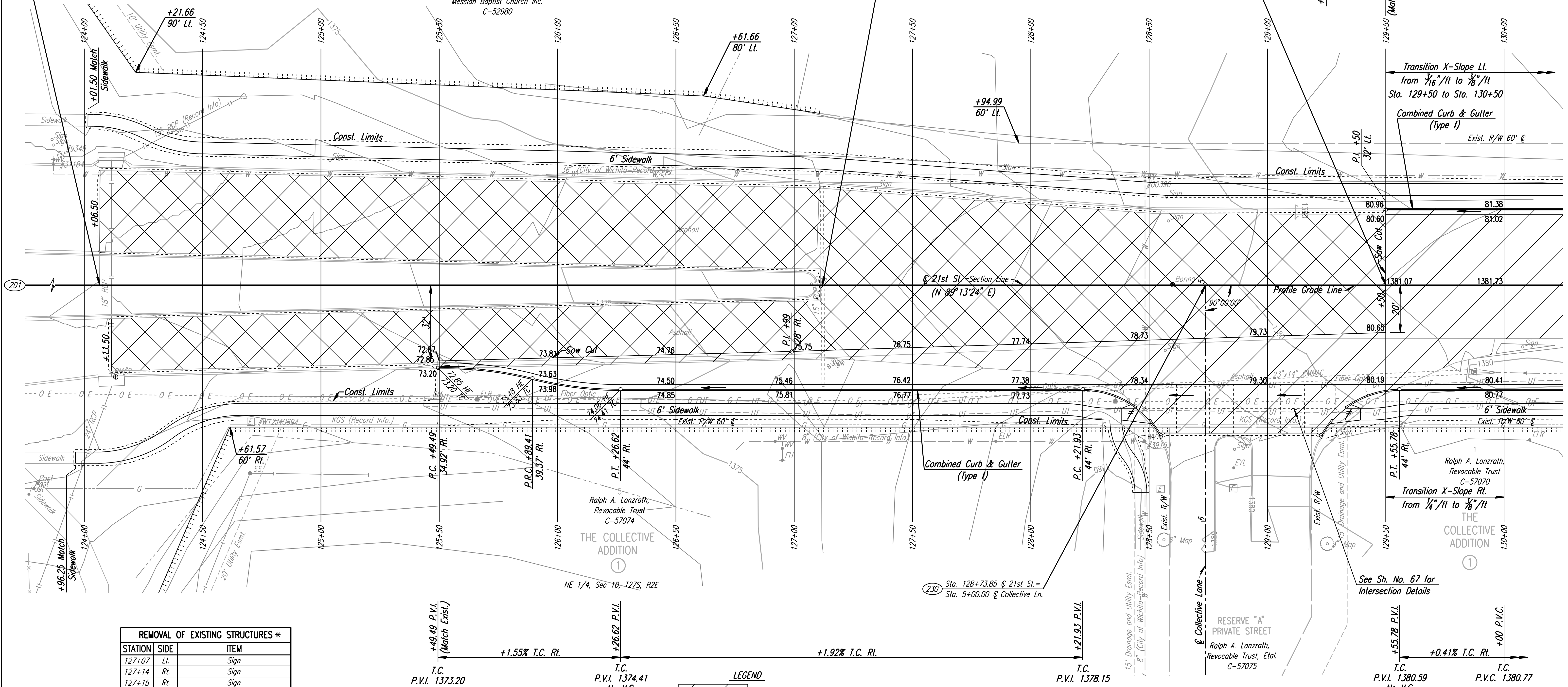
MESSIAH BAPTIST CHURCH 4th ADDITION

Sta. 127+12 Abandon 15" RCP in place

Sta. 129+50 BEGIN PROJECT No. 472-84636

P.C. P.V.C. 1380.65

T.C. P.V.I. 1381.50 100' V.C.



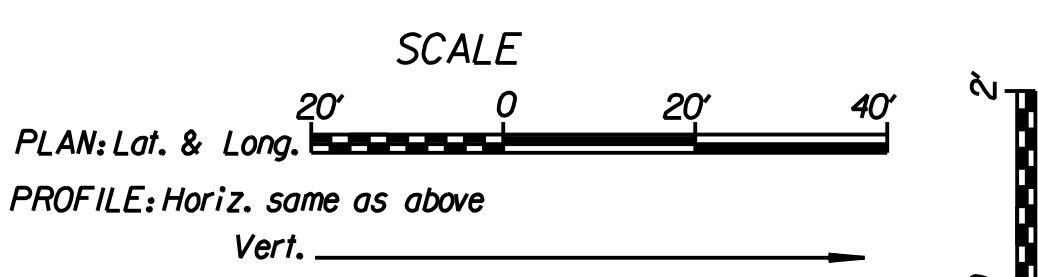
REMOVAL OF EXISTING STRUCTURES *		
STATION	SIDE	ITEM
127+07	Lt.	Sign
127+14	Rt.	Sign
127+15	Rt.	Sign
127+35	Lt.	Sign
127+87	Lt.	Sign
128+57	Rt.	Sign
128+57	Lt.	Sign
128+58	Lt.	Sign
128+74	Rt.	23"x14" CMMAC w/End Sections

* For Information Only

Note: Elevations shown along Curb and Gutter are to High Edge and Top of Curb.

LEGEND

- Pavement Removal
- 2" Bituminous Milling & Overlay
- Wheelchair Ramp w/ Detectable Warning



- UTILITIES**
- Gas: Kansas Gas Service
 - Power: Westar Energy
 - San. Sewer: Wichita Water & Sewer Dept.
 - Telephone: AT&T
 - Water: Wichita Water & Sewer Dept.

BM #2 Chis. "a" Center face Curb Inlet @ SE Cor. K-96 Ramp and 21st N. 39' Rt. Sta. 124+13 Elev. 1371.69

See Sh. No. 67 for Intersection Details

T.C. P.V.I. 1380.59 No V.C.

T.C. P.V.C. 1380.77

DSNR: JPS OPER: DRP SCALE: 1"=20' I:\2001\01616\PLAN\BDR124.DGN 5-12-2004 14:36:46 LAST REV: 5-19-2008 BY: svb

No.	Revision	By	Date
21ST ST.			
PLAN			
STA. 124+00 TO STA. 130+00			
JAMES L. ARMOUR, P.E. - CITY ENGINEER CITY OF WICHITA PROJECT NO. 472-84636			
Professional Engineering Consultants, P.A. 303 S. TOPEKA • WICHITA, KANSAS 67202 316-262-2691 • FAX 316-262-3003			
Designed by	JPS	Job No.	01616
Drawn by	SVB	Date	August, 2008
			Sht. 5 of 282