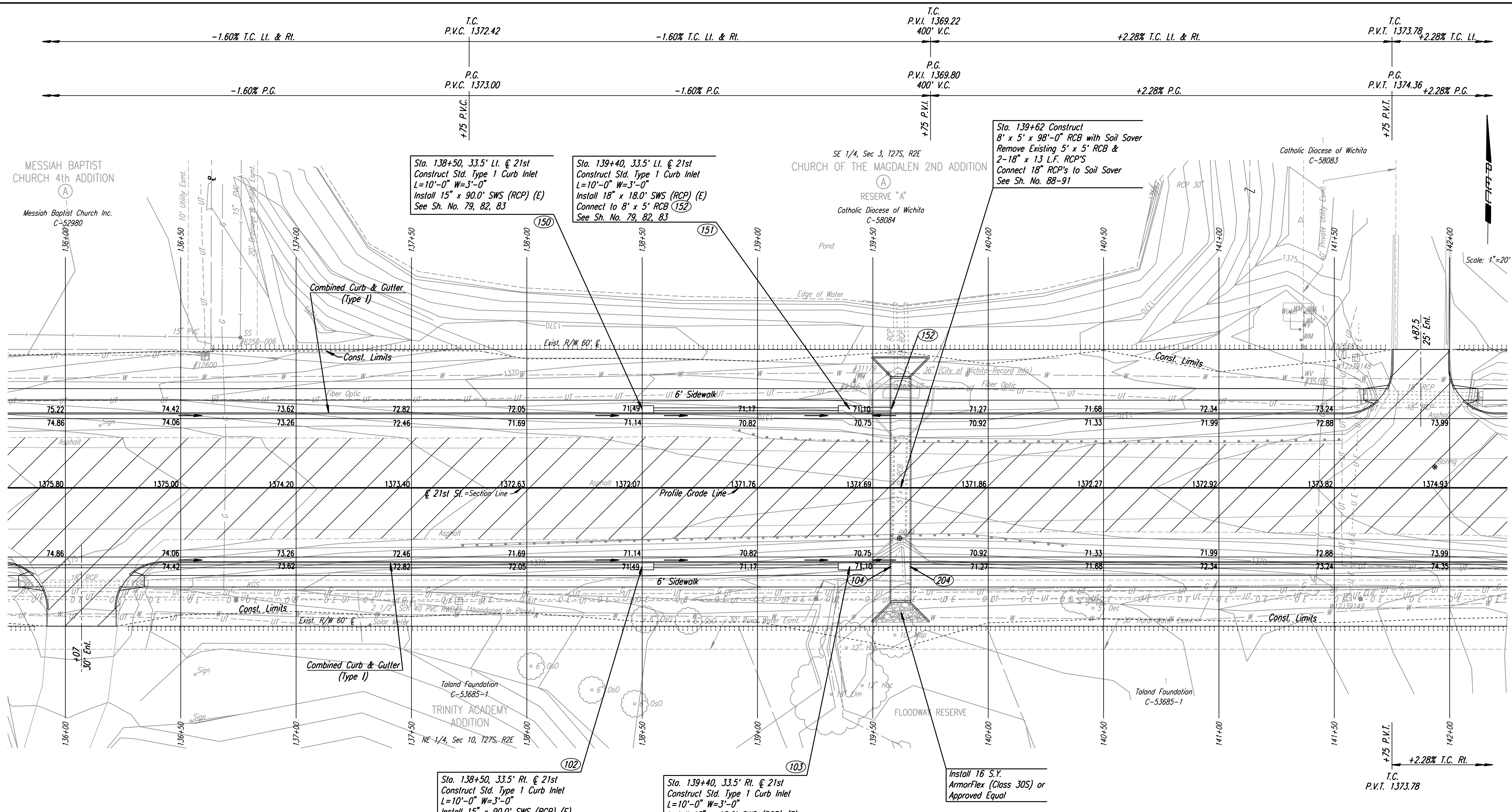


DSNR: JPS OPER: DRP SCALE: 1"=20'
 I:\2001\01616\PLAN\BDR136.DGN 5-12-2004 14:36:46 LAST REV: 5-19-2008 BY: svb



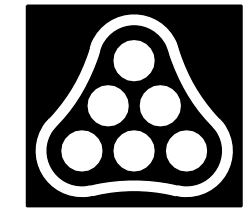
REMOVAL OF EXISTING STRUCTURES *		
STATION	SIDE	ITEM
136+07	Rt.	18" RCP with End Sections
136+15	Lt.	Hwy Sign (Remove & Reset)
137+71	Rt.	264 L.F. Guard Rail
138+89	Lt.	265 L.F. Guard Rail
139+62	Cl.	5'x5' RCB
139+62	Lt.	2 - 18"x13 L.F. RCP
141+88	Lt.	2 - 18" RCP with End Sections

* For Information Only

- UTILITIES
- Gas Kansas Gas Service
 - Power Westar Energy
 - San. Sewer Wichita Water & Sewer Dept.
 - Telephone AT&T
 - Water Wichita Water & Sewer Dept.
 - Water RWD #5

BM #4 Chis. "a" Center S headwall RCB under 21st
 St. N. between K-96 & 127th E.
 21.89' Rt. Sta. 139+61.60 Elev. 1371.37

No.	Revision	By	Date
21ST ST. PLAN STA. 136+00 TO STA. 142+00 JAMES L. ARMOUR, P.E. - CITY ENGINEER CITY OF WICHITA PROJECT NO. 472-84636 Professional Engineering Consultants, P.A. 303 S. TOPKA • WICHITA, KANSAS 67202 316-262-2691 • FAX 316-262-3003			
Designed by	JPS	Job No.	01616
Drawn by	SVB	Date	August, 2008
			SH. 8 of 282



Scale: 1"=20'