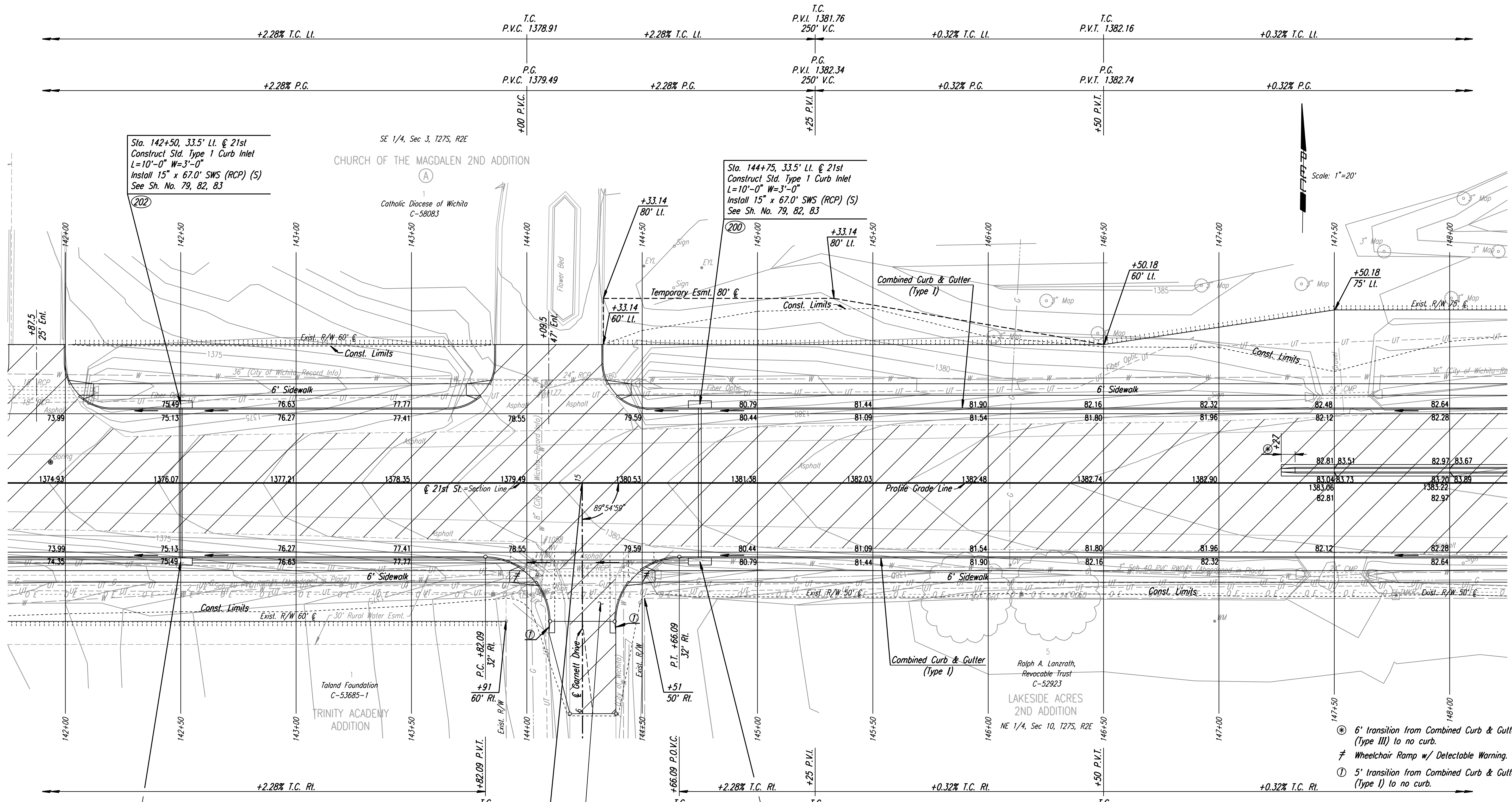


DSNR: JPS OPER: DRP SCALE: 1"=20' LAST REV: 5-19-2008 BY: svb  
 I:\2001\01616\PLAN\BDR142.DGN 5-12-2004 14:36:46



Sta. 142+50, 33.5' Lt. @ 21st  
 Construct Std. Type 1 Curb Inlet  
 L=10'-0" W=3'-0"  
 Install 15" x 67.0' SWS (RCP) (S)  
 See Sh. No. 79, 82, 83

Sta. 144+75, 33.5' Lt. @ 21st  
 Construct Std. Type 1 Curb Inlet  
 L=10'-0" W=3'-0"  
 Install 15" x 67.0' SWS (RCP) (S)  
 See Sh. No. 79, 82, 83

Sta. 142+50, 33.5' Rt. @ 21st  
 Construct Std. Type 1 Curb Inlet  
 L=10'-0" W=3'-0"  
 Install 18" x 284.0' SWS (RCP) (W)  
 Connect to 8' x 5' RCB (204)  
 See Sh. No. 79, 82, 83

Sta. 144+75, 33.5' Rt. @ 21st  
 Construct Std. Type 1 Curb Inlet  
 L=10'-0" W=3'-0"  
 Install 15" x 225.0' SWS (RCP) (W)  
 See Sh. No. 79, 82, 83

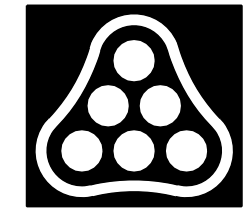
- UTILITIES**
- Gas Kansas Gas Service
  - Power Westar Energy
  - Telephone AT&T
  - Water Wichita Water & Sewer Dept.
  - Water RWD #5

REMOVAL OF EXISTING STRUCTURES *		
STATION	SIDE	ITEM
144+03	Rt.	Sign
144+10	Lt.	24" RCP with End Sections
144+11	Rt.	Sign
144+30	Rt.	24" RCP with End Sections
146+96	Lt.	Sign
147+50	Rt.	24" CMP with End Sections
147+54	Lt.	24" CMP with End Sections

- ⊛ 6' transition from Combined Curb & Gutter (Type III) to no curb.
- ≠ Wheelchair Ramp w/ Detectable Warning.
- Ⓛ 5' transition from Combined Curb & Gutter (Type I) to no curb.

21ST ST.  
**PLAN**  
 STA. 142+00 TO STA. 148+00  
 JAMES L. ARMOUR, P.E. - CITY ENGINEER  
 CITY OF WICHITA PROJECT NO. 472-84636  
**Professional Engineering Consultants, P.A.**  
 303 S. TOPKA • WICHITA, KANSAS 67202  
 316-262-2691 • FAX 316-262-3003

Designed by JPS	Job No. 01616	Sht. 10 of 282
Drawn by SVB	Date August, 2008	



\* For Information Only